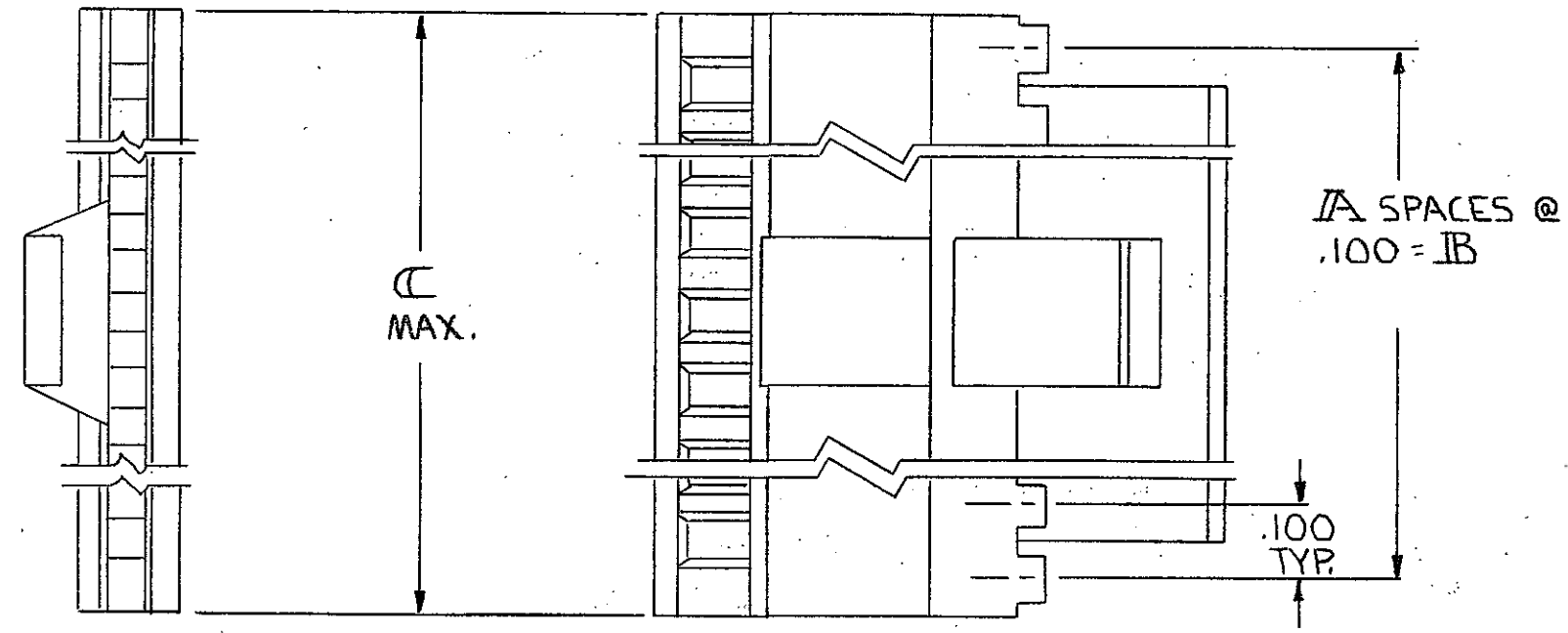
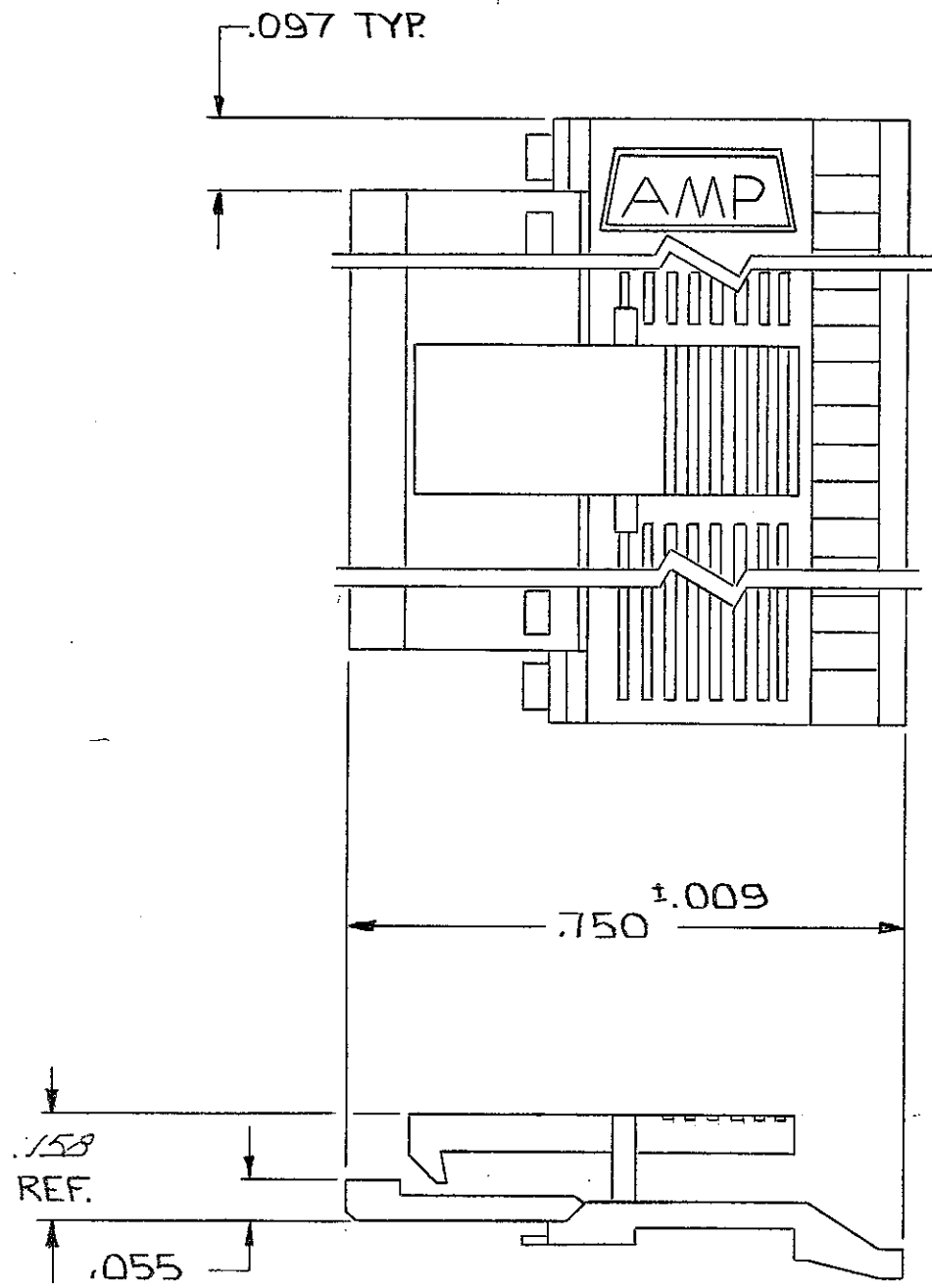


| REVISIONS |   |      |     |                           |           |     |      |
|-----------|---|------|-----|---------------------------|-----------|-----|------|
| P         | F | ZONE | LTR | DESCRIPTION               | DATE      | DWN | APVD |
| 0         |   |      | F   | REVISED PER ECO-15-008006 | 17NOV2015 | NK  | MM   |



|       |       |    |             |             |     |
|-------|-------|----|-------------|-------------|-----|
| 3.600 | 3.500 | 35 | 72          | 3-102681-1  | -1  |
| 3.500 | 3.400 | 34 | 70          | 3-102681-2  | -2  |
| 3.400 | 3.300 | 33 | 68          | 2-102681-3  | -3  |
| 3.300 | 3.200 | 32 | 66          | 2-102681-4  | -4  |
| 3.200 | 3.100 | 31 | 64          | 2-102681-5  | -5  |
| 3.100 | 3.000 | 30 | 62          | 2-102681-6  | -6  |
| 3.000 | 2.900 | 29 | 60          | 2-102681-7  | -7  |
| 2.900 | 2.800 | 28 | 58          | 2-102681-8  | -8  |
| 2.800 | 2.700 | 27 | 56          | 2-102681-9  | -9  |
| 2.700 | 2.600 | 26 | 54          | 2-102681-10 | -10 |
| 2.600 | 2.500 | 25 | 52          | 2-102681-11 | -11 |
| 2.500 | 2.400 | 24 | 50          | 2-102681-12 | -12 |
| 2.400 | 2.300 | 23 | 48          | 1-102681-13 | -13 |
| 2.300 | 2.200 | 22 | 46          | 1-102681-14 | -14 |
| 2.200 | 2.100 | 21 | 44          | 1-102681-15 | -15 |
| 2.100 | 2.000 | 20 | 42          | 1-102681-16 | -16 |
| 2.000 | 1.900 | 19 | 40          | 1-102681-17 | -17 |
| 1.900 | 1.800 | 18 | 38          | 1-102681-18 | -18 |
| 1.800 | 1.700 | 17 | 36          | 1-102681-19 | -19 |
| 1.700 | 1.600 | 16 | 34          | 1-102681-20 | -20 |
| 1.600 | 1.500 | 15 | 32          | 1-102681-21 | -21 |
| 1.500 | 1.400 | 14 | 30          | 1-102681-22 | -22 |
| 1.400 | 1.300 | 13 | 28          | 1-102681-23 | -23 |
| 1.300 | 1.200 | 12 | 26          | 1-102681-24 | -24 |
| 1.200 | 1.100 | 11 | 24          | 1-102681-25 | -25 |
| 1.100 | 1.000 | 10 | 22          | 1-102681-26 | -26 |
| 1.000 | .900  | 9  | 20          | 1-102681-27 | -27 |
| .900  | .800  | 8  | 18          | 1-102681-28 | -28 |
| .800  | .700  | 7  | 16          | 1-102681-29 | -29 |
| .700  | .600  | 6  | 14          | 1-102681-30 | -30 |
| .600  | .500  | 5  | 12          | 102681-1    | -1  |
| C     | B     | A  | NO. OF POS. | PART NO     |     |

- 1. NO. OF POS. PERTAINS TO HOUSING SIZE.
- 2. THIS COVER TO BE USED WITH 102536.
- △ OBSOLETE PART NUMBER

|  |   |   |              |
|--|---|---|--------------|
| UNLESS OTHERWISE SPECIFIED DIMENSIONS ARE IN INCHES.<br>TOLERANCES ON:<br>DECIMALS ±.005<br>ANGLES ± | CONTRACT NO<br>10-31-80   | TE Connectivity<br>NAME COVER-HALF, LATCH, MASS TERMINATION, AMPMODU, .100 €, FULL BAR POLARIZATION |              |
|  | MATERIAL<br>FLAME RETARDANT THERMOPLASTIC<br>COLOR= BLACK<br>FINISH |   |              |
|  | DSGN APPD   | SCALE   | SHEET 1 OF 1 |