

# 10AQS/1SS+AQW

Front panel sealing • variable heights



## DISTINCTIVE FEATURES

Front panel sealing to IP67

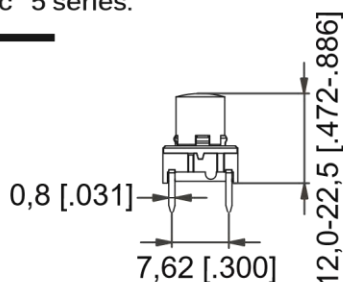
Excellent illumination with 10AQS

Variable total heights

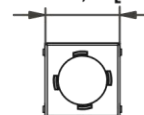


SWITCH SPECIFICATIONS : see Multimec™ 5 series.

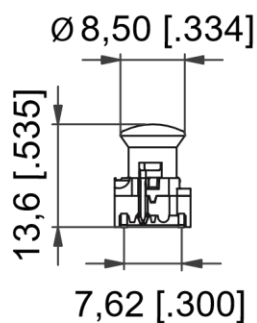
### 5E+1SS - TH



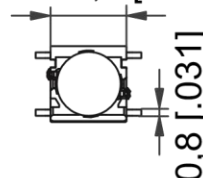
Max 10,3 [.406]



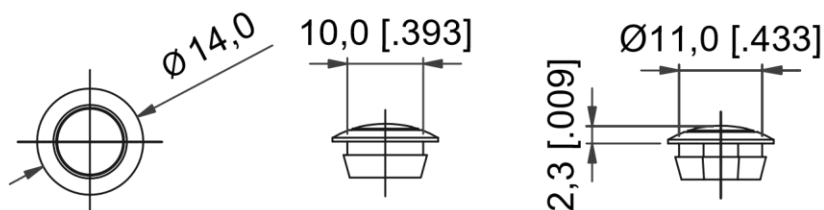
### 5G+10AQS - SMD W/LED



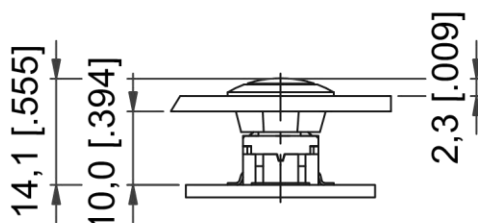
Max 10,3 [.406]



### AQW



### 5G+10AQS+AQW



The company reserves the right to change specifications without notice. All tolerance if not otherwise specified  $\pm 0.2\text{mm}$ .

# 10AQS/1SS+AQW

Front panel sealing • variable heights



## GENERAL SPECIFICATIONS

- Front panel sealing: IP67 to IEC 60529
- Mechanical lifecycle (sealing) : 500,000 activations
- Recommended panel thickness: 2.0 mm



## MATERIALS

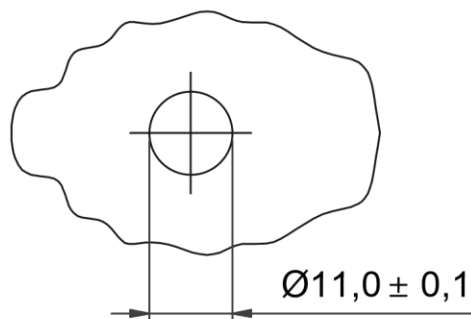
- Sealing: silicone
- 10AQS cap: polycarbonate (PC) UL94H2
- 1SS cap: polyamide UL94V2

### DISCLAIMER:

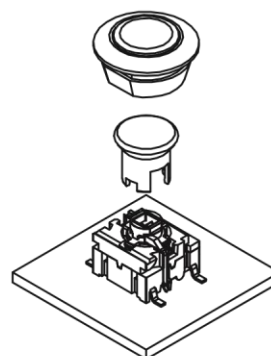
AQW sealing is produced in silicone. This material is not suitable for all industries. Please contact us for a check of chemical resistance for your specific environment.



## PANEL CUT-OUT



## ASSEMBLY



### NOTE:

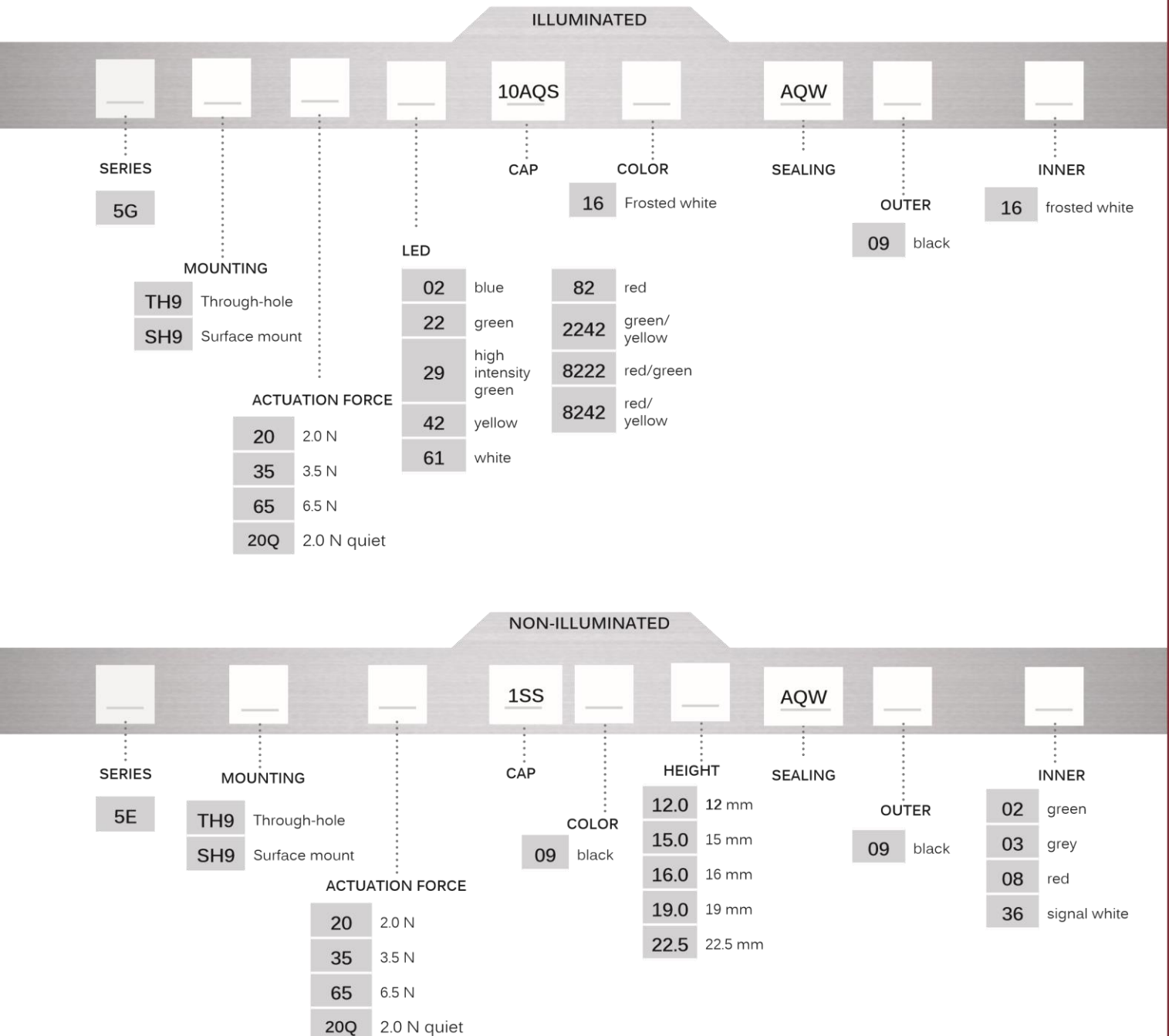
Lowest behind the panel height possible with this solution is 5E+1SS09-12.0+AQW that has the behind the panel height of 9.0 mm.

# 10AQS/1SS+AQW

Front panel sealing • variable heights



## BUILD YOUR PART NUMBER



## ABOUT THIS SERIES

- ⚠ Notice : If an application requires both non-illuminated and illuminated AQW solution, 10AQS cap can be used for both to ensure the same behind the panel height.
- ⚠ Notice : Switches, caps and sealings are ordered separately.

