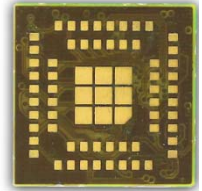




GSM/GPRS Module



SIM900E

SIMCom presents an ultra compact and reliable wireless module-SIM900E. This is a complete Quad-band GSM/GPRS module in a LGA package and designed with a very powerful single-chip processor integrating AMR926EJ-S core, allowing you to benefit from small dimensions and cost-effective solutions.

Featuring an industry-standard interface, the SIM900E delivers GSM/GPRS 850/900/1800/1900MHz performance for voice, SMS, Data, and Fax in a small form factor and with low power consumption. With a tiny configuration of 19.8mm x 19.8mm x 3.0mm, SIM900E can fit almost all the space requirements in your M2M applications, especially for slim and compact demands of design.

Smart Machine Smart Decision

General features

- Quad-Band 850/900/1800/1900MHz
- GPRS multi-slot class 10/8
- GPRS mobile station class B
- Compliant to GSM phase 2/2+
 - Class 4 (2 W @850/900MHz)
 - Class 1 (1 W @1800/1900MHz)
- SAIC (Single Antenna Interference Cancellation) support
- Dimensions: 19.8*19.8*3.0 mm
- Weight: 3.0g
- Control via AT commands (GSM 07.07 ,07.05 and SIMCOM enhanced AT Commands)
- SIM application toolkit
- Supply voltage range : 3.2 ... 4.8V
- Low power consumption: 1.0mA(sleep mode&BS-PA-MFRMS=9)
- Operation temperature: -40° C to +85 ° C

Specifications for Fax

- Group 3, class 1

Specifications for GPRS Data

- GPRS class 10:max. 85.6 kbps (downlink)
- PBCCH support
- Coding schemes CS 1, 2, 3, 4
- PPP-stack

Specifications for CSD Data

- USSD
- Non transparent mode

Specifications for SMS via GSM/GPRS

- Point to point MO and MT
- SMS cell broadcast
- Text and PDU mode

Approvals(plan):

- CE
- FCC

Package

- LGA

Specifications for Voice

- Tricodex
 - Half rate (HR)
 - Full rate (FR)
 - Enhanced Full rate (EFR)
- AMR
 - Half rate (HR)
 - Full rate (FR)
- Hands-free operation
(Echo suppression)

Software features

- 0710 MUX protocol
- Embedded TCP/UDP protocol
- FTP/HTTP
- FOTA(special version)
- MMS
- DTMF
- Ecall (special version)
- Jamming Detection
- SSL
- SMS Autorun
- Ping
- Email

Interfaces

- Interface to external SIM 3V/1.8V
- Analog audio interface
- RTC backup
- Serial interface
- Antenna pad
- GPIO
- PWM
- ADC

Compatibility

- AT cellular command interface

More about SIMCom SIM900E

Please contact:

Tel: 86-21-32523300

Fax: 86-21-32523301

Email: simcom@sim.com

Website: www.sim.com/wm