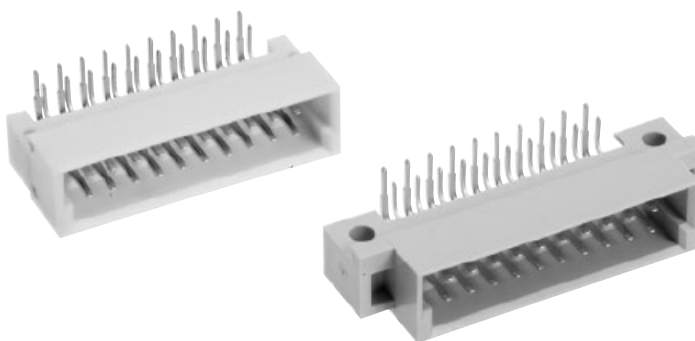
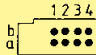
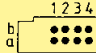
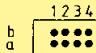
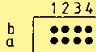
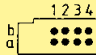


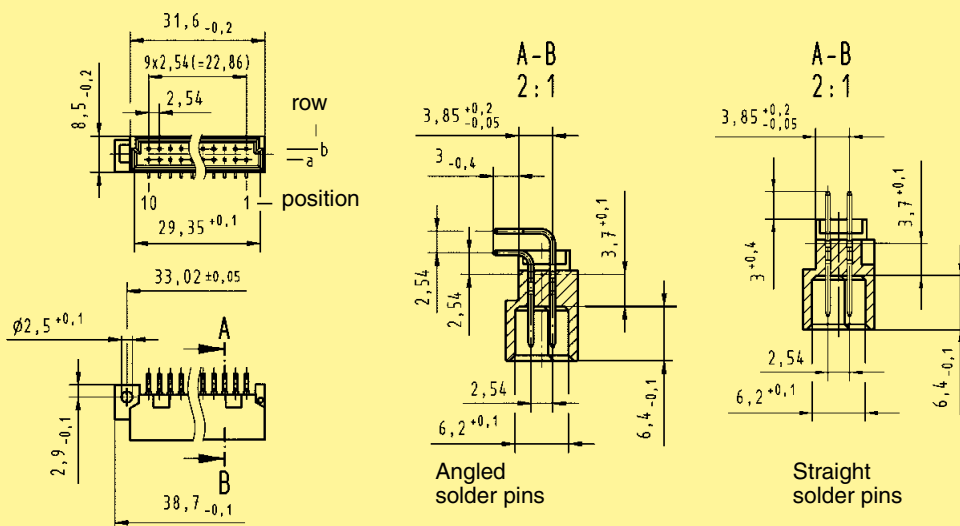
20



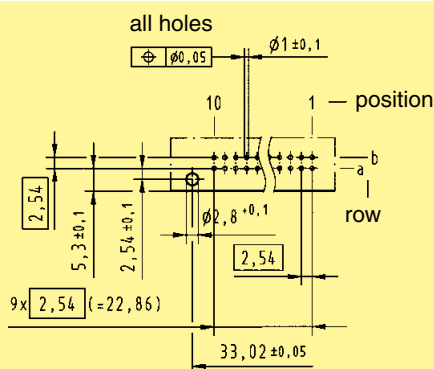
**DIN Signal
up to 2 A**

Identification	Number of contacts	Contact arrangement	Part No.	Performance levels according to IEC 60 603-2.		
			3	2	1	
Male connector with angled solder pins						
with fixing flange	20			09 24 120 6921 09 24 320 6921 ^{b)}		
with fixing flange, SMC	20			09 24 120 6919 ^{d)}		
without fixing flange	20		Performance level 3 on request	09 24 120 6571		Performance level 1 on request
without fixing flange, SMC	20			09 24 120 6579 ^{d)}		
Male connector with straight solder pins						
with fixing flange	20			09 24 120 6922		

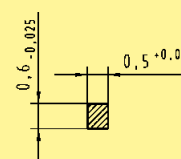
with fixing flange without fixing flange



Mounting side



Cross section of solder terminations



Cross area (A) of contacts
row a, b: $A = 0.29 - 0.33 \text{ mm}^2$

Dimensions in mm