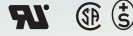
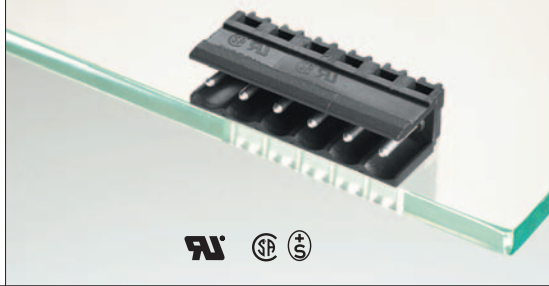
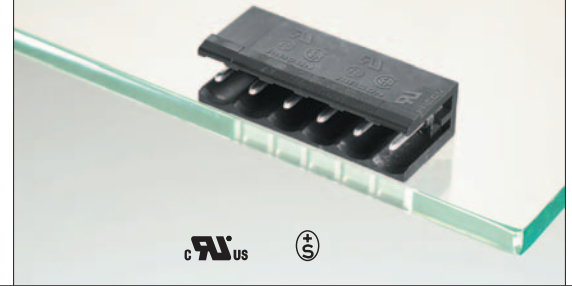




# Type 29



# Type 329



## Terminal blocks

to Type 29

- Type 09** page 92
- Type 13** page 95
- Type 49** page 92

to Type 329

- ASP045** page 46
- Type 313** page 95
- Type 314** page 96
- Type 349** page 93
- Type 350** page 93

## Accessories

for Type 329

### Coding set

700024 page 168  
(coding without pole loss)

## Description Type 29

Header, centerline 5 mm / 0.197 inches, horizontal mounting, round contact pins 1.3 mm / 0.051 inches, open ends

## Technical Data Type 29

V / A 300 / 10

V / A 300 / 10

250 V / 4 kV / 3 / 10 A  
Insulation co-ordination according to IEC 664-1  
Clearance and creepage distance  $\geq 3.7$  mm

Round contact pin	1.3 mm / 0.051 in.
Round solder pin	1 mm / 0.039 in. recommended pc board hole dia. 1.3 mm / 0.051 in.
Solder pin length	3.6 mm / 0.142 in.
Pole size	2 to 12
Color	black

## Description Type 329

Header, centerline 5 mm / 0.197 inches, horizontal square contact pins 1 mm / 0.039 inches, open ends, codable

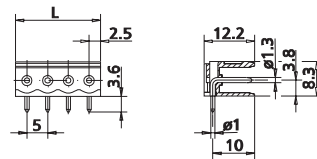
## Technical Data Type 329

V / A 300 / 15

320 V / 4 kV / 3 / 10 A  
Insulation co-ordination according to IEC 664-1  
Clearance and creepage distance  $\geq 3.7$  mm

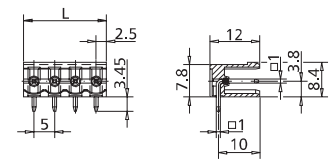
Square contact pin	1 mm / 0.039 in.
Square solder pin	1 mm / 0.039 in. recommended pc board hole dia. 1.5 mm / 0.059 in.
Solder pin length	3.45 mm / 0.136 in.
Pole size	2 to 24
Color (standard)	black
Color (optional)	green

Dimensions in mm 1 mm = 0.0394 in.



$L = (\text{pole size} - 1) \times \text{centerline} + 5 \text{ mm} / 0.197 \text{ in.}$

Dimensions in mm 1 mm = 0.0394 in.



$L = (\text{pole size} - 1) \times \text{centerline} + 5 \text{ mm} / 0.197 \text{ in.}$

## Color Options

for Type 329

<b>Suffix</b>	<b>Color</b>
-2	black (standard)
-6	green

Please order header and terminal block in the same color.

## Part numbers (P/N)

### Type 29

centerline 5 mm / 0.197 inches

P/N 310291

Complete the part number by adding the pole size.

	02	03	04	05	06	07	08
09	10	11	12	13	14	15	16
17	18	19	20	21	22		

## Part numbers (P/N)

### Type 329

centerline 5 mm / 0.197 inches

P/N 313291

Complete the part number by adding the pole size.

	02	03	04	05	06	07	08
09	10	11	12	13	14	15	16
17	18	19	20	21	22	23	24

- Standard pole sizes
- Available on demand. Minimum order quantity 5000 poles per item.

- Standard pole sizes
- Available on demand. Minimum order quantity 5000 poles per item.