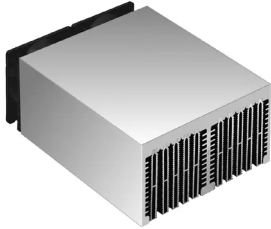


Data sheet Product LA 10 200 230

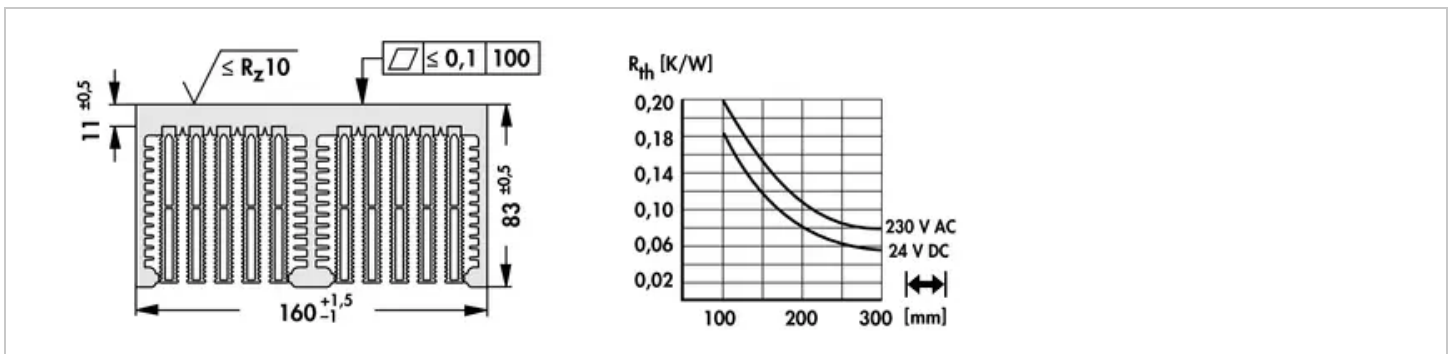


Cooling aggregates>Cooling aggregates with axial fan
 160 x 83 mm, with axial fan

Features

| | |
|-------------------------------------|--------------------------------------------------------------------------------------------------------------------------------------------------------------------------------------------------------|
| width: | 160 mm |
| height: | 83 mm |
| length: | 200 mm |
| thermal resistance: | 0.2 - 0.055 K/W |
| surface: | <ul style="list-style-type: none"> aluminium natural/degreased/cutting edges not deburred (by the metre not degreased/cutting edges not deburred) mounting area(s) milled flat |
| operating voltage of the fan motor: | <ul style="list-style-type: none"> 24 V DC 230 V AC |

Technical Drawing



Fan

| | |
|-------------|----------------|
| type: | ebmpapst 8556N |
| dimensions: | 80x80x38 mm |

| | |
|----------------------------------|--------------------------------------------|
| tension: | 230 V AC |
| power inout: | 12 W |
| max. air volume: | 50 m³/h |
| temperature range: | -40°C... +90°C |
| noise level: | 31 dB(A) |
| speed: | 2,800 min⁻¹ |
| weight: | 490 g |
| failure rate (L ₁₀): | L₁₀ > 52,500 h (40°C) |
| type: | ebmpapst 8314H |
| dimensions: | 80x80x32 mm |
| tension: | 24 V DC |
| power inout: | 6 W |
| max. air volume: | 80 m³/h |
| temperature range: | -20°C... 75°C |
| noise level: | 48 dB(A) |
| speed: | 5,000 min⁻¹ |
| weight: | 170 g |
| failure rate (L ₁₀): | L₁₀ > 55,000 h (40°C) |