



SERIES 1900 - SMALLEST SINGLE-POLE ROCKER SWITCHES

TO 6 (2) A 250 V AC



PRODUCT FEATURES

- Reliable leaf spring contact system with contact spacing ≥ 3 mm
- Attractive, slim design
- Three sizes
- Low space requirement due to small sizes

ON REQUEST


- Other colors
- Other printing variants
- Cable assembly


Mechanical life endurance	75E3
Operating force	2 - 5 N
Contact resistance (new condition)	< 100 mOhm (1 A 12 V DC)
Insulation resistance (new condition)	> 100 MOhm (500 V DC)
Proof tracking	250 PTI
Protection type	IP 40
Ambient temperature	terminal side -20 °C ... +85 °C actuating side -20 °C ... +55 °C
Flammability	UL 94 V-2
Glow wire test temperature	850 °C
Material	actuator PA housing PA terminals silver plated
Plug force of the terminals	≤ 80 N
Approval marks	
Suitable for appliances of protection class II	



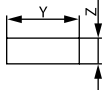
SERIES 1900 - SMALLEST SINGLE-POLE ROCKER SWITCHES

TO 6 (2) A 250 V AC

 single-pole	Actuator color / printing	Housing color	6 (2) A 250 V AC 1E4	4 (1) A 250 V AC 5E4	30 mA 12 V DC 5E4	6 A 125 - 250 V AC 1/8 HP	Terminal type	Terminal description	Contact distance (mm)	Contact material	Miscellaneous	Stock version
	ON / OFF switch (SPST)											
1901.1102		Black	○	○		○		4.8	≳ 3	Ag		○
1901.1103		Black	○	○		○		4.8	≳ 3	Ag		○
1901.1106		White	○	○		○		4.8	≳ 3	Ag	rocker marking silver	
1911.1102		Black	○	○		○		4.8	≳ 3	Ag		○
1911.1104		Black	○	○		○		4.8	≳ 3	Ag		
1921.1101		White	○	○		○		4.8	≳ 3	Ag		
1921.1102		Black	○	○		○		4.8	≳ 3	Ag		○
1901.1152		Black			○			4.8	≳ 3	Au		

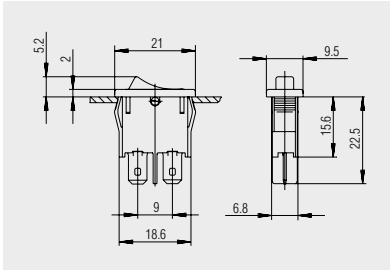



Basic type 1901
single-pole



X = Wall thickness

x	y	z
0.75 ... 1.25	19.2 ^{-0.1}	6.8 ^{+0.1}
1.25 ... 2	19.4 ^{-0.1}	6.8 ^{+0.1}
2 ... 3	19.8 ^{-0.1}	6.8 ^{+0.1}



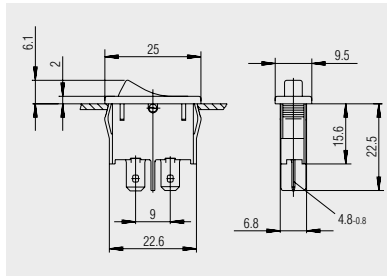
 Quick-connect terminal 4.8 x 0.8

ROCKERSWITCHES
 PUSHBUTTON SWITCHES
 TOGGLE SWITCHES
 SLIDE SWITCHES
 ROTARY SWITCHES
 FOOT SWITCHES
 TACT AND KEY SWITCHES
 SNAP-ACTION SWITCHES
 MICRO-SIGNAL SWITCHES
 SENSORS
 ECO
 PUSH N' DRIVE




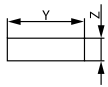
SERIES 1900 - SMALLEST SINGLE-POLE ROCKER SWITCHES

TO 6 (2) A 250 V AC



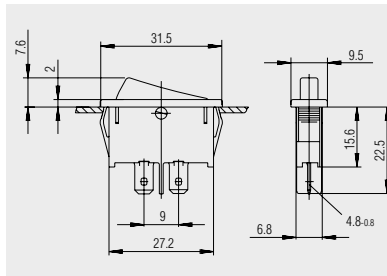
Basic type 1911
single-pole

 Quick-connect terminal 4.8 x 0.8

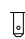


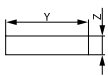
X = Wall thickness

x	y	z
0.75 ... 1.25	23.2 ^{-0.1}	6.8 ^{+0.1}
1.25 ... 2	23.4 ^{-0.1}	6.8 ^{+0.1}
2 ... 3	23.8 ^{-0.1}	6.8 ^{+0.1}



Basic type 1921
single-pole

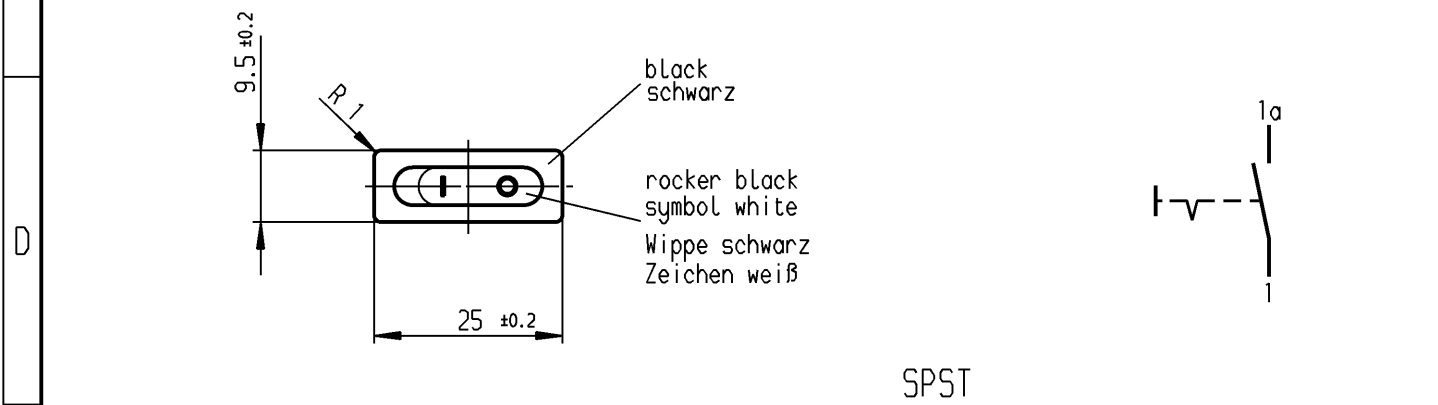
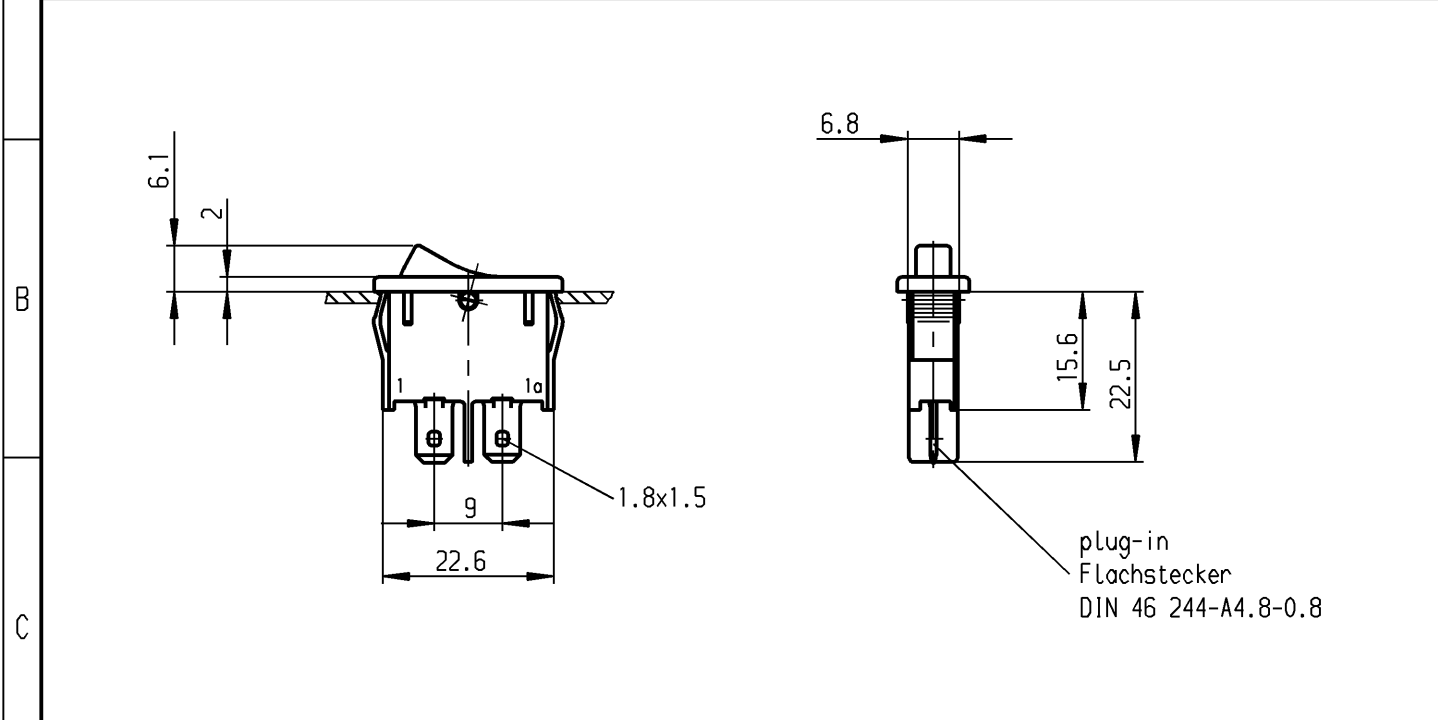
 Quick-connect terminal 4.8 x 0.8



X = Wall thickness

x	y	z
0.75 ... 1.25	30 ^{-0.1}	6.8 ^{+0.1}
1.25 ... 2	30.2 ^{-0.1}	6.8 ^{+0.1}
2 ... 3	30.6 ^{-0.1}	6.8 ^{+0.1}

	1	2	3	4
A	recommended cut-out for snap-in fixing (edge opposite to snap-in direction) Empfohlener Ausschnitt für Rastbefestigung (Grat gegenüber Bestückungsseite)	wall thickness Wanddicke	length of cut-out Ausschnittlänge	width of cut-out Ausschnittbreite
		0.75 to / bis 1.25	23.2 -0.1	6.8 +0.1
		1.25 to / bis 2	23.4 -0.1	6.8 +0.1
		2 to / bis 3	23.8 -0.1	6.8 +0.1



SPST
suitable for appliances of class II

Ausschalter 1-polig
Für Geräte der Klasse II geeignet

Marking
Aufschrift
Ⓜ
1911.
4(1)/250~5E4 T85
6(2)/250~
6A 125-250V AC
1/8 HP
R 58

VERTRAULICH-CONFIDENTIAL
 Ⓜ Alle Rechte bei Marquardt GmbH, auch fuer den Fall von Schutzrechtsanmeldungen.
 Jede Veruegungsbefugnis, wie Kopier- und Weitergaberecht, bei uns.
 Ⓜ This document is the exclusive property of Marquardt GmbH. Without our consent, it may not be reproduced or given to third parties.

Diese Unterlage ist geistiges Eigentum der Marquardt GmbH. Schutzvermerk nach DIN 34 beachten. Copyright reserved.

Für Form und Lage FOR SHAPE AND LOC.		FÜR WINKEL FOR ANGLE ± 2°		ALLgemeintoleranzen UNTOLERANCED DIMENSIONS			Pause COPY	Blatt SHEET		Typ K	Zeichn./DRAWING NO. 1911.1104	Index
PROJECTION		Abmasse und Nennmassbereiche Angaben in mm		Laengen LENGTH		Radien RADII		Original DIN A4	Maßstab SCALE 1:1			
ALL DIMENSIONS ARE IN MILLIMETRES		0-6 ± 0.1		± 0.1		± 0.2		0 10 20 30 mm		Geräteschalter Appliance Switch		
c		g		b		f		CAD Medusa		Z		
a		43248		13.05.05 hhe		e		gez./DRAWN BY 12.07.99 vor		Ersatz für/REPLACEMENT OF		
27951		12.07.99 vor		d				gepr./CHECKED BY		MARQUARDT		
Ausg. ISSUE		Änderung REVISION		gez. DRAWN BY		Ausg. ISSUE		Änderung REVISION		gez. DRAWN BY		Marquardt GmbH, D-78604 Rietheim-Weilheim