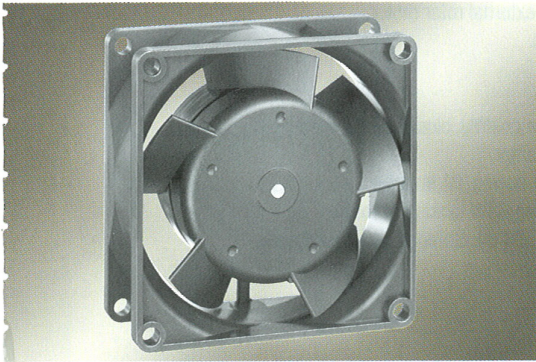


DC Axial Fans

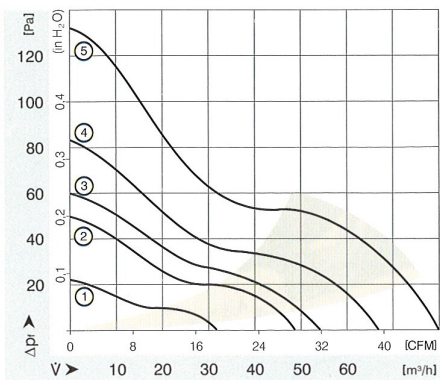
Series 8300 80 x 80 x 32 mm



- DC fans with electronically commutated external rotor motor. Fully integrated commutation electronics.
- With electronic protection against reverse polarity, blocking and overloading by PTC-resistor; partially impedance protected.
- Fan of fiberglass reinforced plastic. PBTP housing, PA impeller.
- Air exhaust over struts. Rotational direction CW looking at rotor.
- Optional Vario-Pro: Highly adaptable software configuration of the fan enables a tailor-made solution to the specific requirements of your applications.
- Electrical connection via 2 leads AWG 22, TR 64. Stripped and tinned ends.
- Mass 170 g.

ebm-papst • St. Georgen

Nominal Data		Air Flow	Air Flow	Nominal Voltage	Voltage Range	Noise	Sinter-Sleeve Bearings	Power Input	Nominal Speed	Temperature Range	Service Life L_{10}	at t_{max}	Curve	Specials
Type	m ³ /h	CFM	V DC	V DC	dB(A)	Bel	□ / ■	Watt	min ⁻¹	°C	Hours	Hours	P. 82-86	
8305 G	48	28.3	5	4.5...5.5	34	5.0	□	2.2	3 050	-20...+75	70 000 / 25 000	2		
8312 GL	32	18.8	12	6...15	24	4.0	□	1.0	2 000	-20...+75	80 000 / 35 000	1		
8312 L	32	18.8	12	6...15	24	4.0	■	1.0	2 000	-20...+75	80 000 / 35 000	1		
8312 GM	48	28.3	12	6...15	34	5.0	□	1.8	3 000	-20...+75	70 000 / 30 000	2		
8312 M	48	28.3	12	6...15	34	5.0	■	1.8	3 000	-20...+75	70 000 / 30 000	2		
8312 G	54	31.8	12	6...15	36	5.2	□	2.5	3 300	-20...+75	70 000 / 30 000	3		
8312	54	31.8	12	6...15	36	5.2	■	2.2	3 300	-20...+75	70 000 / 30 000	3	/12	
8312 HL	67	39.4	12	6...15	43	5.8	■	4.0	4 200	-20...+75	62 500 / 27 500	4	/2	
8312 H	80	47.1	12	7...12.6	48	6.2	■	5.5	5 000	-20...+60	50 000 / 25 000	5		
8314 L	32	18.8	24	12...28	24	4.0	■	1.0	2 000	-20...+75	80 000 / 35 000	1		
8314 M	48	28.3	24	12...28	34	5.0	■	2.1	3 000	-20...+75	70 000 / 30 000	2		
8314 G	54	31.8	24	12...28	36	5.2	□	2.5	3 300	-20...+75	70 000 / 30 000	3		
8314	54	31.8	24	12...28	36	5.2	■	2.5	3 300	-20...+75	70 000 / 30 000	3	/2; /12	
8314 HL	67	39.4	24	12...28	43	5.8	■	4.3	4 200	-20...+75	62 500 / 27 500	4		
8314 H	80	47.1	24	20...26.5	48	6.2	■	6.0	5 000	-20...+75	55 000 / 25 000	5	/12; /19	
8318	54	31.8	48	36...56	36	5.2	■	2.6	3 300	-20...+75	70 000 / 30 000	3	/2; /12; /17	
8318 HL	67	39.4	48	36...56	43	5.8	■	4.3	4 200	-20...+75	62 500 / 27 500	4	/2; /12	
8318 H	80	47.1	48	36...56	48	6.2	■	5.8	5 000	-20...+65	55 000 / 30 000	5	/2; /12; /17	



Rotor protrusion max. 0.4 mm

