

## PL-CORE-Z5 -5000-830

PrevaLED Core Z5 | Spot-, Down- and Wallmount Light Engines and Modules



### Areas of application

- Spot lighting in shops and retail
- Down- and wall lighting in offices, corridors, meeting rooms, workplaces
- Decorative and functional lighting in hospitality, hotels, restaurants
- Functional lighting in public and commercial buildings

### Product family benefits

- Easy integration (one reflector for three different luminous flux, Zhaga conform)
- Protection against overheating via reversible thermally triggered shutdown
- Easy cooling due to optimized efficiency and high maximum operation temperature
- Easy upgrade from PrevaLED Core Z4 thanks to identical housing
- Optimized luminous efficacy compared to Z4 version
- High driver flexibility allows cost-effective and intelligent systems
- LEDset 2 (except 1,100 lm version)
- 5 year guarantee



## Product datasheet

---

### Product family features

- Spot module with standardized interfaces
- Complete portfolio with varying luminous flux, color temperature, color rendering
- Available with color temperature: 2,700 K, 3,000 K, 3,500 K or 4,000 K
- High module efficacy: up to 146 lm/W at  $T_p = 65\text{ °C}$
- Connection via spring-type terminal with stranded and solid wires
- Chip technology from OSRAM Opto Semiconductors
- CE marked and UL listed
- Reversible shutdown on module or thermal derating with OTi DALI
- Usable with SELV and DC (up to 60 V) control gears without additional insulation
- Lifetime (L80/B50): 60,000 h (temperature at  $T_c = 65\text{ °C}$ ), except 1,100 lm version
- Lifetime (L80/B50) 1,100 lm version: 50,000 h (temperature at  $T_c = 65\text{ °C}$ )

## Product datasheet

### Technical data

#### Electrical data

Nominal wattage	42.70 W
Rated wattage	42.70 W
Nominal current	0.99 A
Type of current	DC
Maximum forward current	1400 mA

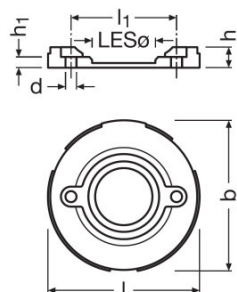
#### Photometrical data

Color temperature	3000 K
Color rendering index Ra	≥80
Light color (designation)	Warm White

#### Light technical data

Diameter of light emitting surface	19.0 mm
Beam angle	115 °

#### Dimensions & weight



Diameter	50.0 mm
Rated height	7.00 mm
Product weight	10.50 g

#### Temperatures & operating conditions

Performance temp. acc. to IEC 62717	65 °C
Maximum temperature at tc test point	90 °C
Ambient temperature range	-20...+50 °C
Temperature range at storage	-20...85 °C

## Product datasheet

### Lifespan

Lifespan	60000 h <sup>1)</sup>
Nominal lamp life time	60000 h
Rated lamp life time	60000 h

<sup>1)</sup> L80/B50 at Tc 65 °C

### Capabilities

Dimmable	Yes
----------	-----

### Certificates & standards

Standards	Acc. to 2009/125/EC (ErP)/Acc. to EN 62031/Acc. to EN 62471/Acc. to VDE/UL-8750
-----------	---

### Logistical data

Commodity code	854370909900
----------------	--------------

### Equipment / Accessories

- System matches to OPTOTRONIC OTe, OT FIT, OTi DALI control gears

### Additional product information

- Installation by qualified electrician only.
- Usable with SELV and DC (up to 120 V) control gears without additional insulation.
- The LED engine needs to be built into a luminaire.
- Not suitable for operation with line voltage.
- In order to operate OSRAM LED modules safely, it is absolutely necessary to operate them with an electronically stabilized power supply that protects against short circuits, overload and overheating.
- In case other power supplies than OSRAM OPTOTRONIC are used, compliance to the necessary operating parameters (voltage, current, power) has to be ensured.
- Pay attention to polarity! Wrong polarity can cause destruction or malfunction of the module.
- Conducting paths on the circuit board must not be damaged or destroyed during installation.
- Suitable for luminaires of protection class I, grounding is mandatory to comply with safety standards.
- For optimal cooling a thermal interface material should be applied between LED module and heat sink.
- The LED module should be mounted to a heat sink with M3 screws or suitable accessories. Maximum tightening torque for mounting screws need to be observed as excessive force may damage the housing.
- Protect against splashes!
- The module, as manufactured, has no inherent protection against corrosion. It is the user's responsibility to provide suitable protection against corrosive agents, such as moisture, condensation and other harmful elements.
- Photobiological safety according to IEC 62471, risk group RG1

### Download Data

File
------

## Product datasheet



Certificates  
724371\_Certificate of compliance



Declarations of conformity  
718398\_Declaration of Conformity PL-CORE-Z5

### Logistical Data

Product code	Product description	Packaging unit (Pieces/Unit)	Dimensions (length x width x height)	Volume	Gross weight
4052899322868	PL-CORE-Z5 -5000-830	Shipping carton box 20	380 mm x 120 mm x 60 mm	2.74 dm <sup>3</sup>	458.00 g

The mentioned product code describes the smallest quantity unit which can be ordered. One shipping unit can contain one or more single products. When placing an order, for the quantity please enter single or multiples of a shipping unit.

### References / Links

For more information on the multi-level guarantee and the terms and conditions of the guarantee visit

▶ [www.osram.com/system-guarantee](http://www.osram.com/system-guarantee)

### Disclaimer

Subject to change without notice. Errors and omission excepted. Always make sure to use the most recent release.