

FBS 2-8 GY - Plug-in bridge



3032621

<https://www.phoenixcontact.com/pc/products/3032621>

Please be informed that the data shown in this PDF document is generated from our online catalog. Please find the complete data in the user documentation. Our general terms of use for downloads are valid.

Plug-in bridge, pitch: 8.2 mm, number of positions: 2, color: gray



Your advantages

- The 2- to 50-pos. jumpers can bridge up to 50 terminal blocks in the two bridge shafts of the CLIPLINE complete system in one step

Commercial data

Item number	3032621
Packing unit	10 pc
Minimum order quantity	10 pc
Product key	BE2Z2X
Catalog page	Page 403 (C-1-2019)
GTIN	4046356565288
Weight per piece (including packing)	4.01 g
Weight per piece (excluding packing)	4.12 g
Customs tariff number	85366990
Country of origin	DE

FBS 2-8 GY - Plug-in bridge



3032621

<https://www.phoenixcontact.com/pc/products/3032621>

Technical data

Product properties

Product type	Jumper
Number of positions	2
Pitch	8.2 mm

Electrical properties

Maximum load current	41 A (The current values for the jumpers can deviate when used in different modular terminal blocks. The precise values can be found in the accessories data for the respective modular terminal blocks.)
----------------------	---

Connection data

Maximum load current	41 A (The current values for the jumpers can deviate when used in different modular terminal blocks. The precise values can be found in the accessories data for the respective modular terminal blocks.)
----------------------	---

Dimensions

Width	14.7 mm
Height	29.6 mm
Depth	29.6 mm
Pitch	8.2 mm

Material specifications

Color	gray
Material	Copper
Flammability rating according to UL 94	V0
Insulating material	PA

Environmental and real-life conditions

Ambient conditions

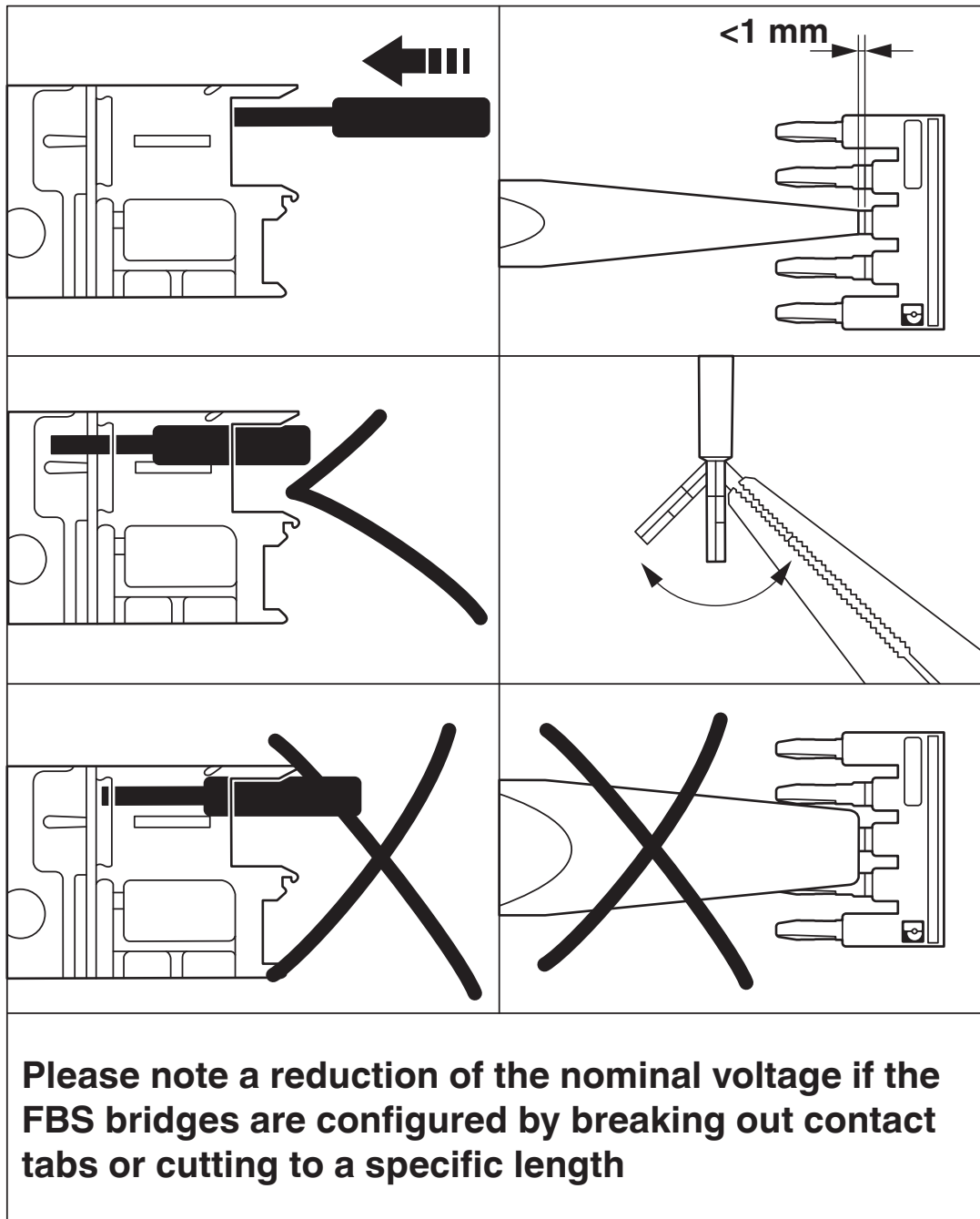
Ambient temperature (operation)	-60 °C ... 105 °C
Ambient temperature (storage/transport)	-25 °C ... 60 °C (for a short time, not exceeding 24 h, -60 °C to +70 °C)
Ambient temperature (assembly)	-5 °C ... 70 °C
Ambient temperature (actuation)	-5 °C ... 70 °C
Permissible humidity (storage/transport)	30 % ... 70 %

Mounting

Mounting type	Plug-in mounting
---------------	------------------

Drawings

Schematic diagram



FBS 2-8 GY - Plug-in bridge

3032621

<https://www.phoenixcontact.com/pc/products/3032621>



Approvals

To download certificates, visit the product detail page: <https://www.phoenixcontact.com/pc/products/3032621>



EAC

Approval ID: EAC-Zulassung

FBS 2-8 GY - Plug-in bridge

3032621

<https://www.phoenixcontact.com/pc/products/3032621>



Classifications

ECLASS

ECLASS-11.0	27141140
ECLASS-12.0	27141140
ECLASS-13.0	27250303

ETIM

ETIM 9.0	EC000489
----------	----------

UNSPSC

UNSPSC 21.0	39121400
-------------	----------

FBS 2-8 GY - Plug-in bridge

3032621

<https://www.phoenixcontact.com/pc/products/3032621>



Environmental product compliance

China RoHS	Environmentally friendly use period: unlimited = EFUP-e No hazardous substances above threshold values
------------	---

Phoenix Contact 2024 © - all rights reserved
<https://www.phoenixcontact.com>

PHOENIX CONTACT GmbH & Co. KG
Flachmarktstraße 8
D-32825 Blomberg
+49 (0) 5235-3 00
info@phoenixcontact.com