

**Mini, 7/8" Field Attachable Connectors**

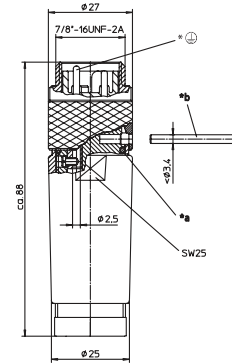
RSC 30-RSC 50 | RKC 30-RKC 50



**Male, 3-, 4-, and 5-Pole**

Field attachable connector, Mini, 7/8" male connector 3-, 4-, and 5-pole with threaded joint, assembling with screw terminals.

**RSC 30-RSC 50**



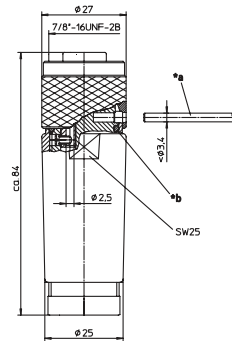
- \*a O-ring
- \*b Pin or screwdriver as assembly tool
- \*⊕ Contact 1.5 leading



**Female, 3-, 4-, and 5-Pole**

Field attachable connector, Mini, 7/8" female connector 3-, 4-, and 5-pole with threaded joint, assembling with screw terminals.

**RKC 30-RKC 50**

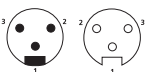


- \*a O-ring
- \*b Pin or screwdriver as assembly tool

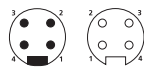
**Pin Assignments**

Mini, 7/8" - Male / Female

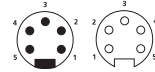
**3 poles**



**4 poles**



**5 poles**





# Be Certain with Belden

## Mini, 7/8" Field Attachable Connectors

RSC 30-RSC 50 | RKC 30-RKC 50

### Technical Data

#### Environmental













Degree of protection IP 67 / NEMA 6P  
 Operating temperature range -40°C (-40°F) / +90°C (+194°F)

#### Mechanical

Housing / Molded body PA  
 Insert TPU, self-extinguishing  
 Contact CuZn, gold over nickel plated  
 Coupling nut Al anodized  
 O-ring NBR  
 Mode of connection screw terminals  
 Connectable conductor max. 1.5 mm<sup>2</sup>

#### Electrical

Contact resistance ≤ 5 mΩ  
 Nominal current at 40°C 3 poles 12 A  
 4-5 poles 9 A  
 Nominal voltage 240 V  
 Rated voltage 250 V  
 Test voltage 3 poles 2.5 kV eff. / 60 s  
 4-5 poles 1.5 kV eff. / 60 s  
 Insulation resistance > 10<sup>9</sup> Ω  
 Pollution degree 3

Part Number		Pins	Cable Diameter Range	Characteristics
Male	Female			
RSC 30/9	RKC 30/9	3	∅ 6.0 - 8.0 mm	 
RSC 30/11	RKC 30/11		∅ 8.0 - 10.0 mm	 
RSC 40/9	RKC 40/9	4	∅ 6.0 - 8.0 mm	 
RSC 50/9	RKC 50/9	5	∅ 6.0 - 8.0 mm	 
RSC 50/11	RKC 50/11		∅ 8.0 - 10.0 mm	 
RSC 50/13.5	RKC 50/13.5		∅ 10.0 - 12.0 mm	 
RSC 50/16	RKC 50/16		∅ 12.0 - 14.0 mm	