

Electronic housing - CM175-LG/H 35/BO/DB/GH BK - 2941507

Please be informed that the data shown in this PDF Document is generated from our Online Catalog. Please find the complete data in the user's documentation. Our General Terms of Use for Downloads are valid (<http://phoenixcontact.com/download>)



Complete housing with vents, Cross connection: without bus connector, Color: black, Width: 175 mm, Length: 125 mm, Height: 155 mm, Number of positions cross connector: not relevant

Why buy this product

- ✓ Flexible accommodation of different connection elements (from high-position connectors to electronic PCBs)
- ✓ Rugged housing technology
- ✓ Easy snap-on mounting on symmetrical DIN rails according to EN 60715
- ✓ Shock and contamination-proof accommodation of electronic components

RoHS

Key Commercial Data

Packing unit	5 STK
GTIN	 4 017918 080471
GTIN	4017918080471
Weight per Piece (excluding packing)	665.400 g
Custom tariff number	85369010
Country of origin	Germany

Technical data

General

Housing type	Complete housing
Housing material	Polycarbonate fiber reinforced
Color	black

Ambient conditions

Ambient temperature (operation)	-40 °C ... 105 °C (depending on power dissipation)
---------------------------------	--

Dimensions

Length	125 mm
Height	155 mm

Electronic housing - CM175-LG/H 35/BO/DB/GH BK - 2941507

Technical data

Dimensions

Width	175 mm
Depth	125 mm

Technical data

Flammability rating according to UL 94	V0
Power dissipation without gap	120 W
Power dissipation with 20 mm gap	160 W

Standards and Regulations

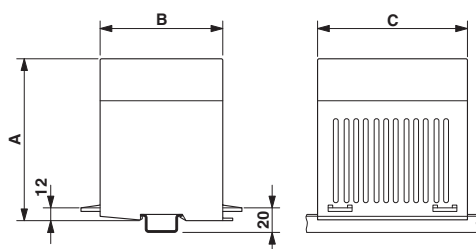
Flammability rating according to UL 94	V0
--	----

Environmental Product Compliance

China RoHS	Environmentally friendly use period: unlimited = EFUP-e
	No hazardous substances above threshold values

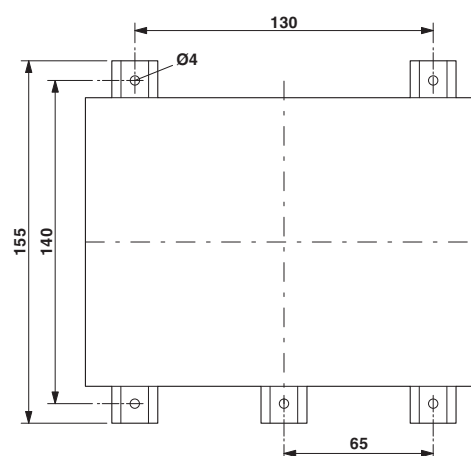
Drawings

Dimensional drawing



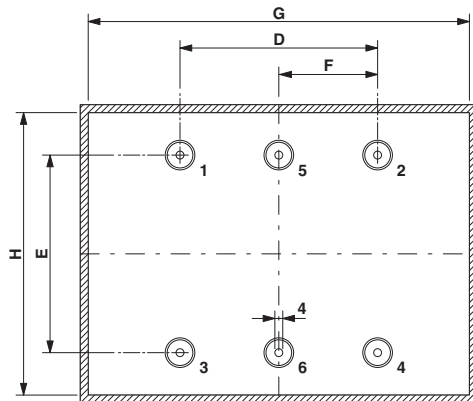
Dimension A: 155 mm; dimension B: 125 mm; dimension C: 175 mm

Dimensional drawing



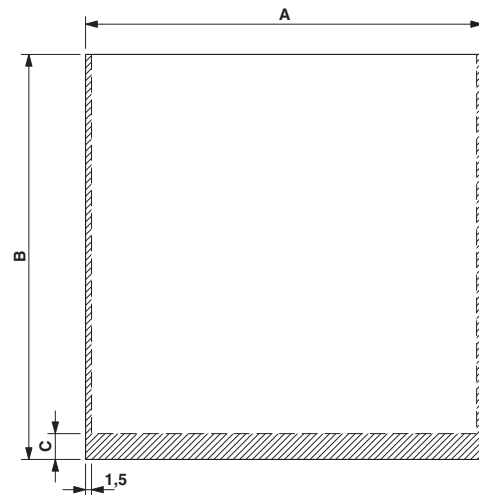
Electronic housing - CM175-LG/H 35/BO/DB/GH BK - 2941507

Dimensional drawing



Dimension D: 100.0 mm; E: 80.0 mm; G: 160.0 mm; H: 112.0 mm
Spacer pins 1 - 4: Height 25 mm; \varnothing 4 mm

Dimensional drawing



PCB 1, 7: Dimension A: 165.5 mm; B: 131.5 mm; C: 0 mm

PCB 8, 10, 11, 13: Dimension A: 115.5 mm; B: 139.0 mm; C: 0 mm

Schematic diagram

