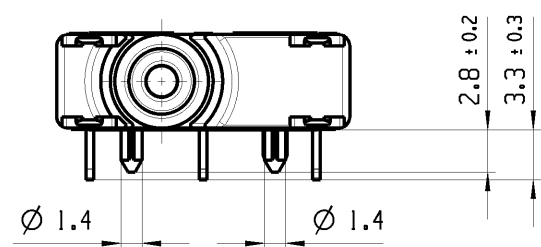
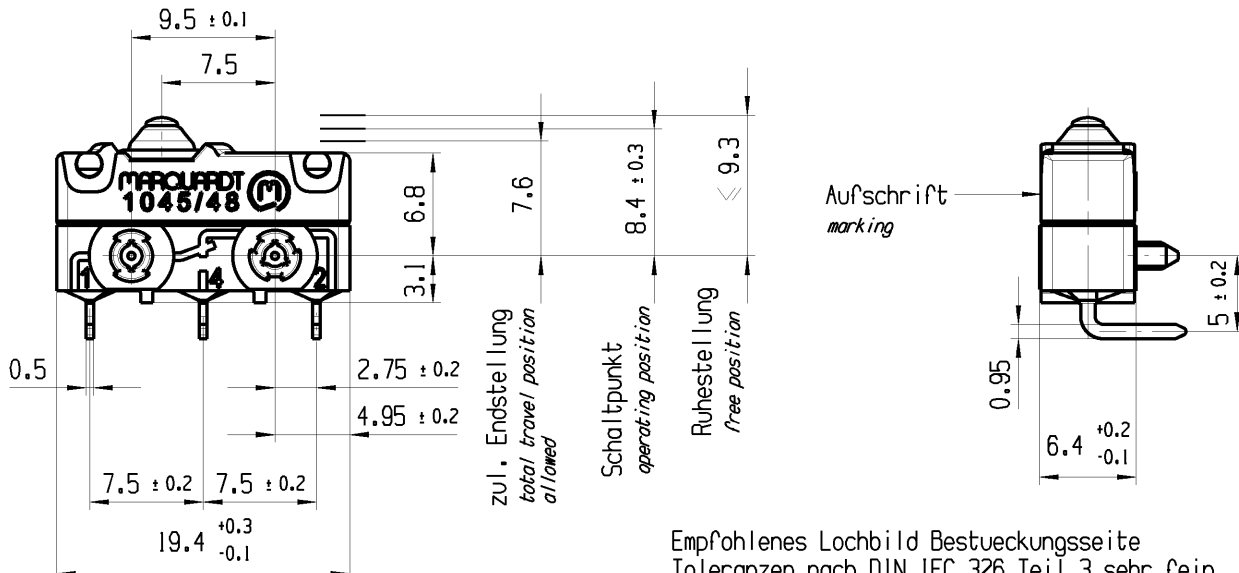


CONFIDENTIAL

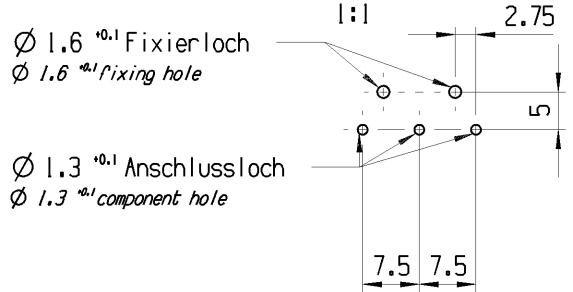
VERTRAULICH

Alle Rechte bei Marquardt, auch fuer den Fall von Schutzrechtsanmeldungen. Jede Veruegungsbefugnis, wie Kopier- und Weitergaberecht, bei uns.

THIS DRAWING IS THE EXCLUSIVE PROPERTY OF MARQUARDT. WITHOUT THEIR CONSENT IT MAY NOT BE REPRODUCED OR GIVEN TO THIRD PARTIES.



Empfohlenes Lochbild Bestueckungsseite
Toleranzen nach DIN IEC 326 Teil 3 sehr fein
Recommended hole pattern component side
tolerances acc. to DIN IEC 326 item 3 very fine



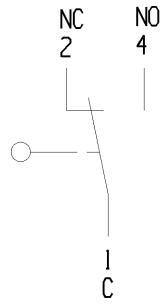
Aufschrift
marking
MARQUARDT
1045/48

1A 250V AC
IE5 US LISTED

Herstellort/-jahr/-monat/-tag
Code of manufacture:
place/year/month/day

Auf Verpackung/ on box: G

US LISTED



Wechsler 1-polig
Kontakte vergoldet
single pole changeover
contacts gold plated

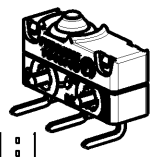
Schaltbetaetigungskraft
actuating force $\leq 1.9 \text{ N}$

Rueckschaltkraft
release force $\geq 0.5 \text{ N}$

Differenzweg
movement differential $\leq 0.2 \text{ mm}$

IP Schutzklasse nach EN 60529 IP 67
protection class acc to EN 60529 IP 67

G: Konform nach IEC 60335-1:2001 Kap. 30
G: matching IEC 60335-1:2001 clause 30



-		-		-		1045.4151-XX				
Figure		Type		Customer No.		Art.No.-PI				
Shape and location	Angle $\pm 2^\circ$	Length		Radii		Sheet 01	Ident. K	Document number 10454151	Index f	
	Edge tolerance	0-6 ± 0.1	6-15 ± 0.15	15-30 ± 0.2	30-70 ± 0.3					70-120 ± 0.4
						Format DIN A4	Projection	Scale 2:1	Snap action switch	
						All dimensions are in millimetres				
f	136255	2021-02-18		HHE		System NX V11.0				
e	130794	2020-03-10		HHE		Replacement of				
d	126682	2019-09-02		LEK						
c	83090	2013-03-11		BRC						
Index	MEC-No.	Date (YYYY-MM-DD)		Edited by						