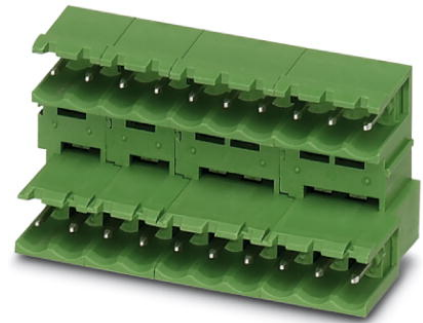


MDSTB 2,5/ 8-G-5,08


Order No.: 1840052

The figure shows a 10-pos. version with 20 contacts



<http://eshop.phoenixcontact.sk/phoenix/treeViewClick.do?UID=1840052>

Header, Nominal current: 10 A, Rated voltage (III/2): 320 V, Number of positions: 8, Pitch: 5.08 mm, Color: green, Contact surface: Tin, Mounting: Soldering, Can be aligned! Mounting flange: Order No. 1736771, 1736768. In combination with MVSTB or FKCV plug components, both an MVSTBW (or FKCVW) and an MVSTBR plug (or FKCVR) must be used. Combination with TMSTBP plug components is not possible!

Commercial data	
EAN	 4 017918 184605
Pack	1 pcs.
Customs tariff	85366990
Gross weight in pieces	0.004 kg
Catalog page information	Page 326 (C-1-2013)

Product notes

WEEE/RoHS-compliant since:
01.01.2003



Please note that the data given here has been taken from the online catalog. For comprehensive information and data, please refer to the user documentation at <http://www.download.phoenixcontact.com>. The General Terms and Conditions of Use apply to Internet downloads.

Technical data	
Dimensions	
Length	22.1 mm
Pitch	5.08 mm
Dimension a	35.56 mm

Pin dimensions	1 x 1 mm
Hole diameter	1.4 mm

General

Range of articles	MDSTB 2,5/...-G
Insulating material group	I
Rated surge voltage (III/3)	4 kV
Rated surge voltage (III/2)	4 kV
Rated surge voltage (II/2)	4 kV
Rated voltage (III/3)	250 V
Rated voltage (III/2)	320 V
Rated voltage (II/2)	400 V
Connection in acc. with standard	EN-VDE
Nominal current I_N	10 A
Maximum load current	10 A
Insulating material	PBT
Color	green
Number of positions	8

Certificates



Certification

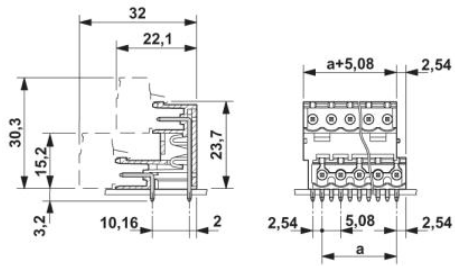
CSA, cULus Recognized, GOST, VDE Gutachten mit
Fertigungsüberwachung, GL, CCA, IECCEB CB Scheme

Certifications applied for:

Certification Ex:

Drawings

Dimensioned drawing



Address

PHOENIX CONTACT, s.r.o.
Mokráň záhon 4
821 04 Bratislava, Slovakia
Phone +420 542 213 401
Fax +421 2 3210 1479
<http://www.phoenixcontact.sk>

© 2014 Phoenix Contact
Technical modifications reserved;