


2J5215

(DATASHEET)

| | |
|--------------------|--------------------------------|
| Type | ISM antenna |
| Frequencies | ISM (868 MHz) ISM (915 MHz) |
| Mounting | Patch Mount |
| Revision | 00 |




P. Tipul


D. Noble

1. SPECIFICATION

Antenna is suitable for sticking on plastic cases and not suitable for sticking on metal or glass.

1.1. Electrical Specifications

| | |
|-----------------------|--------------------------------|
| Frequencies | ISM (868 MHz) ISM (915 MHz) |
| Impedance | 50 Ohms |
| Polarization | Linear |
| Gain | 2.14dBi Max. |
| VSWR* | <1.5:1 |
| Power handling | 25W |
| Operating temperature | -40°C to +85°C |

*Stated when measured on 30x30cm plastic board with 15cm RG174

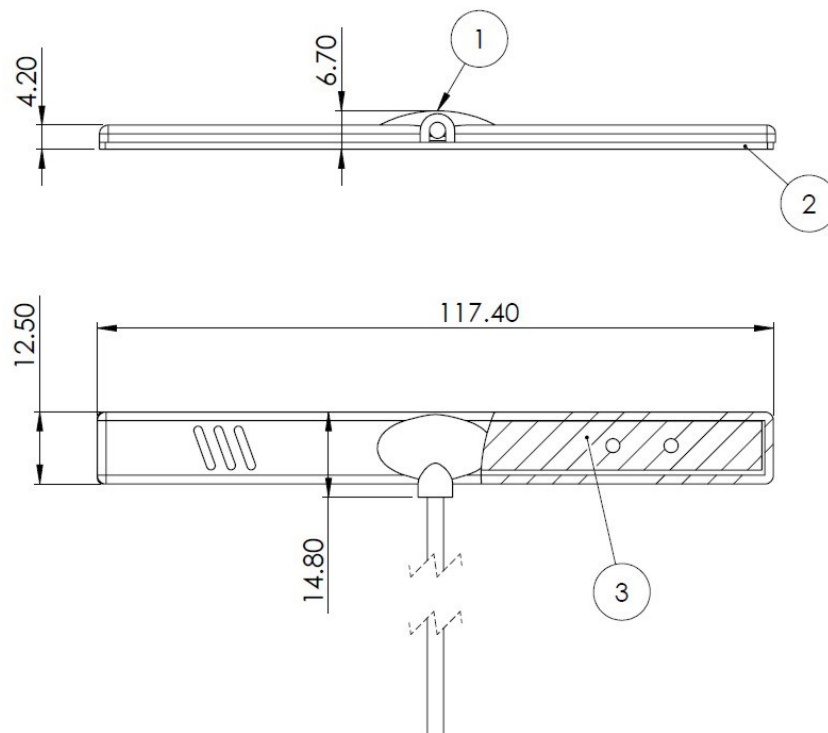
1.2. Connection Specifications

Connector type: SMA male
Cable: RG174U
Cable length: 15 cm

For different cable length and connector type ask our sales team.

1.3. Mechanical Specifications and Dimensions

Material: PVC
Max. dimensions: 6.7mm x 117.4 mm x 12.5mm (H x L x W)
Colour: Black (for different colours please ask our sales team)



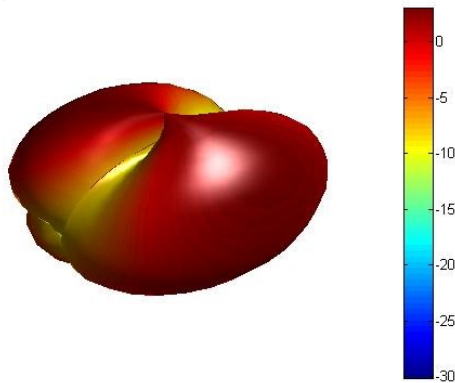
2. MEASUREMENT

2.1. Set Up

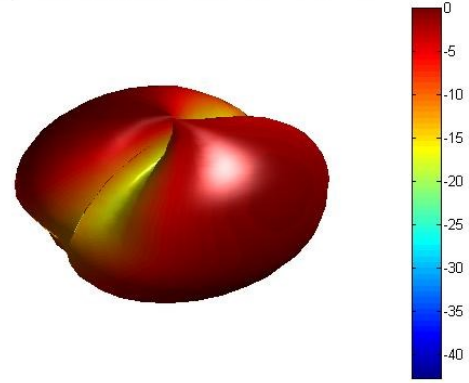
- Connected with 15cm RG174
- Placed on plastic board

2.2. Charts

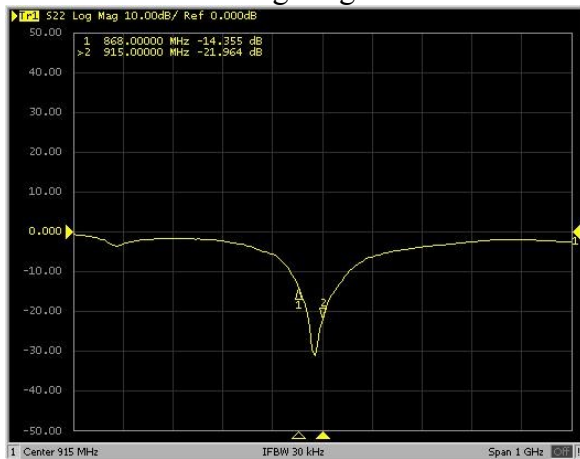
868MHz
Freq = 0.8680GHz Az= 45 EL= 45



915MHz
Freq = 0.9155GHz Az= 45 EL= 45



Log Mag



VSWR

