
SHARK Waterproof

Assembly Guide



Panel PC
Box PC

6G0000-0000-0000

Contents

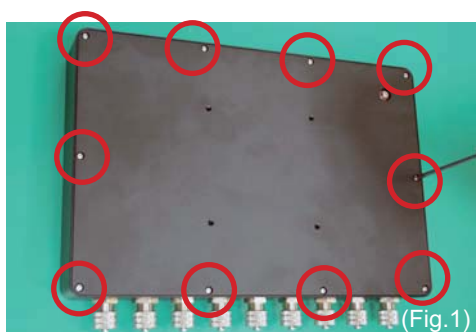
WARNING !

SHARK Waterproof Assembly guide	1
SHARK Waterproof BOX PC Exploded Drawing	4
SHARK Waterproof Panel PC Exploded Drawing	7
IP (International Protection) code- Levels of Protection	10
Introduction of necessary tools	13
IP66 Packing list	14
IP67 Packing list	15
Difference of Waterproof cables	16
I/O Connector Pinouts	17

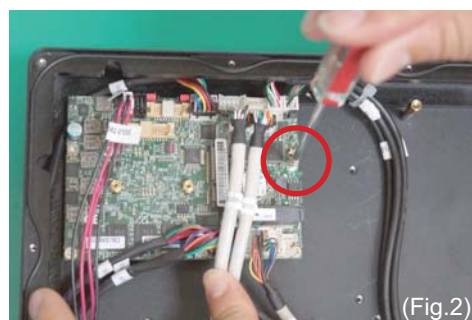
WARNING !

1. Please do not remove the caps of waterproof cables unless needed.
 2. Waterproof cables must be fastened tightly on the connectors of system.
 3. Waterproof cables must be examined by torque wrench, and the torque must be more than or equal 5kgf-cm.
 4. Please align the screw to the system when fasten it.
Crooked angle should be avoided.
 5. Align the screws and fasten them diagonally, just loosely.
Tighten them until make sure all screws are enable to be fastened correctly to the end.
 6. All top cover screws must be examined by torque wrench, and the torque must be more than or equal 5kgf-cm.
 7. If the system error occurred, please turn the power off and unplug it from the power supply before removing system from the water.
 8. Please do not unfasten any screw unless the system is clean and completely dry.
 9. Please be aware that even one drop of water might carry a risk of damage to the waterproof connectors, make sure to avoid when removing waterproof cables.
 10. To avoid causing any damage to the waterproof connectors, using the standard tools are requested.
-

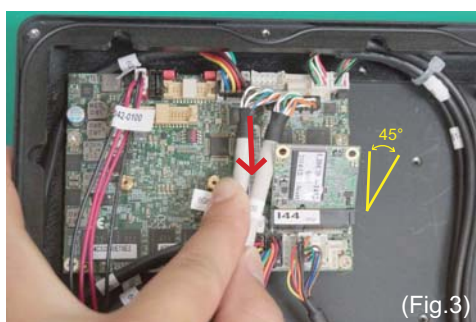
SHARK Waterproof Assembly guide



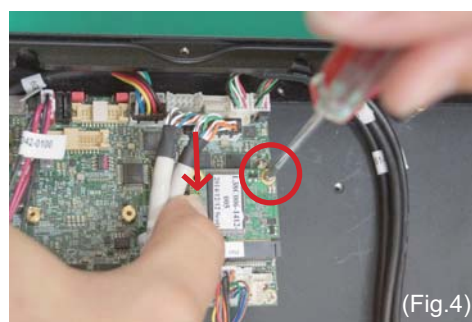
1. Unscrew ten (M2.5*4) screws from the bottom cover and then lift the cover out of the system. (Fig.1)



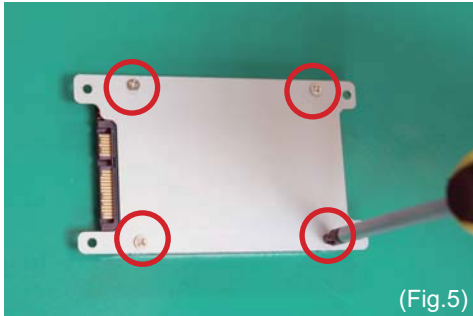
2. Unscrew the (M2*6) screw from the screw thread on motherboard. (Fig.2)



3. Install the mSATA into the connector slot at a 45 degree angle. (Fig.3)



4. Push the mSATA down to the motherboard. Fasten mSATA with the (M2*6) screw. (Fig.4)



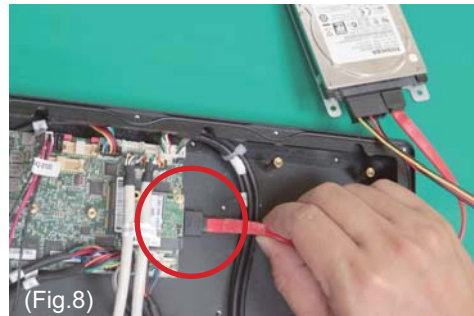
5. Fasten the HDD on HDD KIT with four (M3*4) screws. (Fig.5)



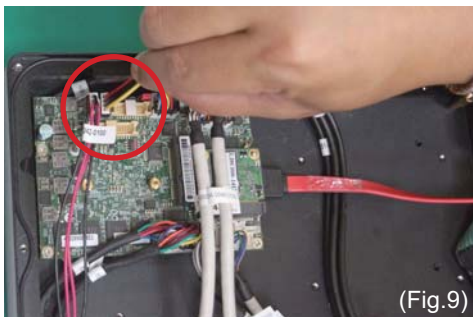
6. Connect the SATA DATA cable with HDD(Fig.6)



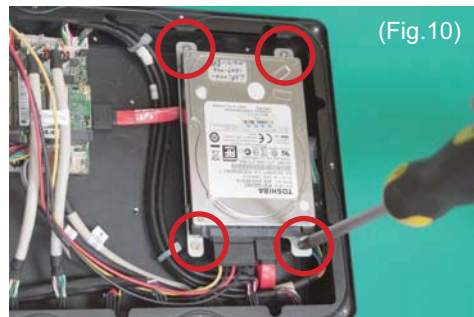
7. Connect the SATA Power cable with HDD. (Fig.7)



8. Connect the SATA DATA cable with motherboard. (Fig.8)



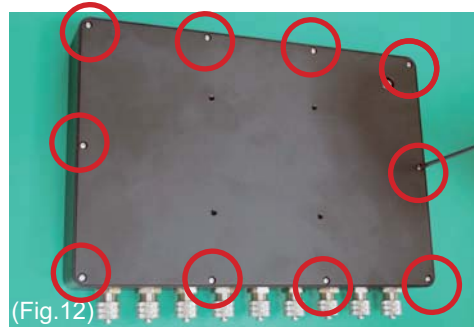
9. Connect the SATA Power cable with motherboard. (Fig.9)



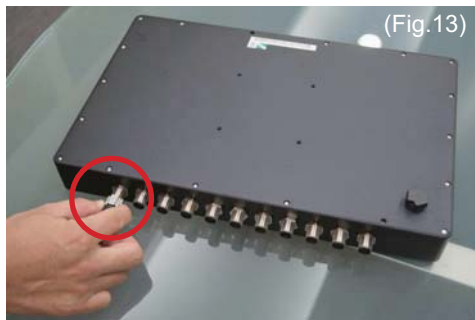
10. Screw the HDD KIT back to the system with four (M3*4) screws. (Fig.10)



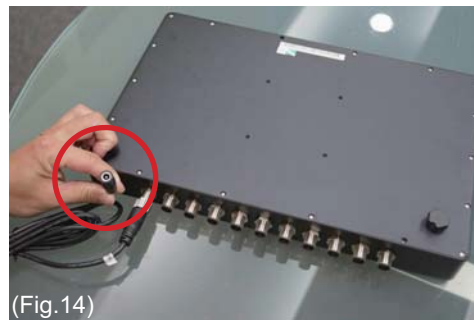
11. Attach the thermal pad on the HDD and avoid the heat-dissipating holes at the same time. (Fig.11)



12. Screw the bottom cover back to the system with then (M2.5*4) screws. (Fig.12)



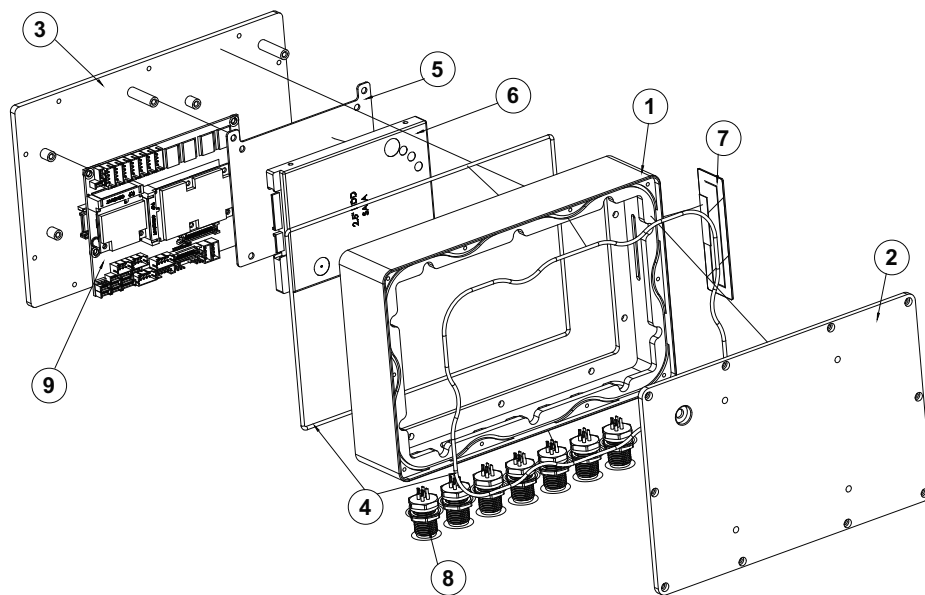
13. Remove the waterproof caps. (Fig.13)



14. Plug in the waterproof cables. (Fig.14)

SHARK Waterproof BOX PC Exploded Drawing

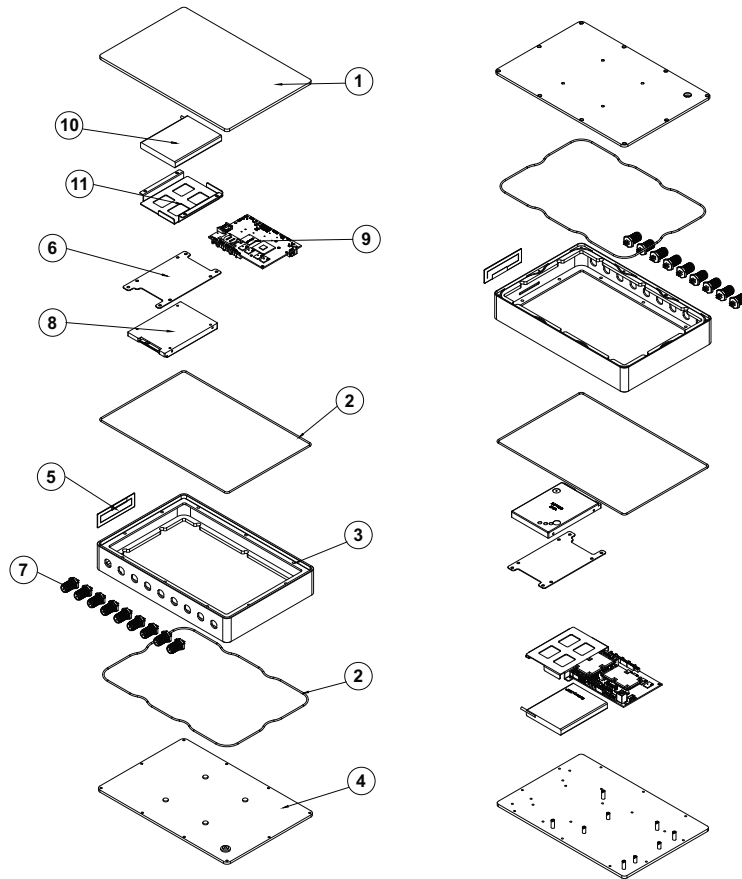
7" SHARK BOX PC



No.	Name	Q'ty	No.	Name	Q'ty
1	Front Bezel	1	6	HDD	1
2	Back Cover	1	7	Key Pad	1
3	Front Cover	1	8	Waterproof Cable	7
4	O-ring	2	9	2I Mainboard	1
5	HDD brackrt	1			

SHARK Waterproof BOX PC Exploded Drawing

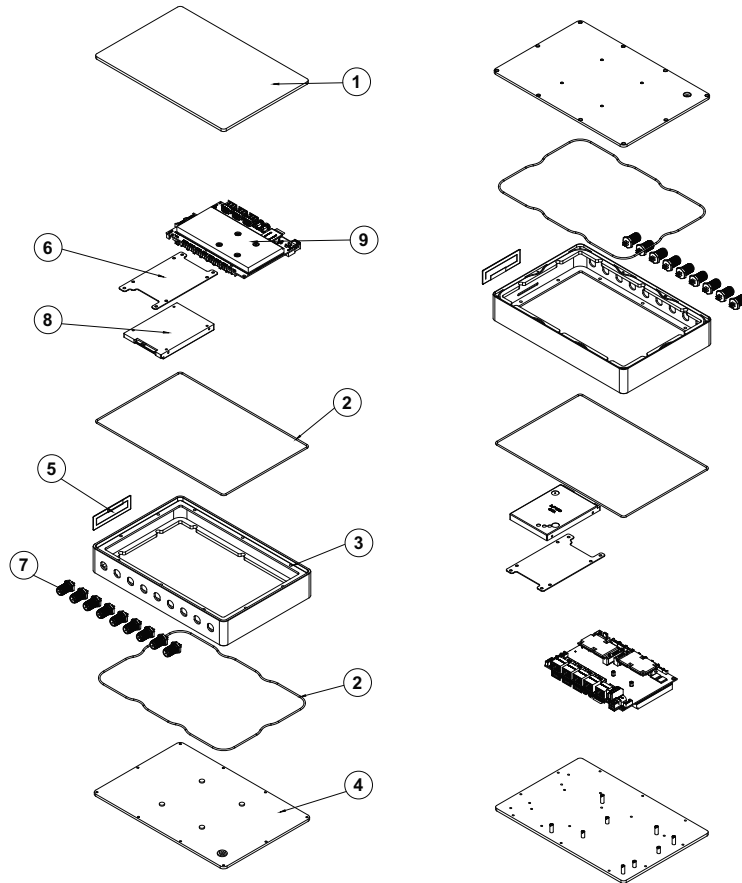
10.1" SHARK BOX PC



No.	Name	Q'ty	No.	Name	Q'ty
1	SHARK 10.1"(WP),BOX,TOP COVER,LF,AL 6063,Black,For 3I/2I	1	7	M12 CABLE WP	x
2	SHARK 10.1,O-RING FOR FRONT BEZEL,L=795MM,Black	2	8	2.5" HDD	1
3	SHARK 10.1"(WP),BOX,FRONT BEZEL,LF,AL 6063,Black	1	9	2I Mainboard	1
4	SHARK 10.1"(WP),BOX,BOTTOM COVER,LF,AL 6063,Black	1	10	BATTERY 2S1P 3360mah	1
5	SHARK 10.1" BOX PC,Power/Reset Function Key Pad,LF,PET,Black	x	11	SHARK 10.1" BOX PC,Battery Bracket,FOR 2S1P 3360mah	1
6	STAR 10.4",HDD RACKET,LF,SECC=1.0,MATERIAL	1			

SHARK Waterproof BOX PC Exploded Drawing

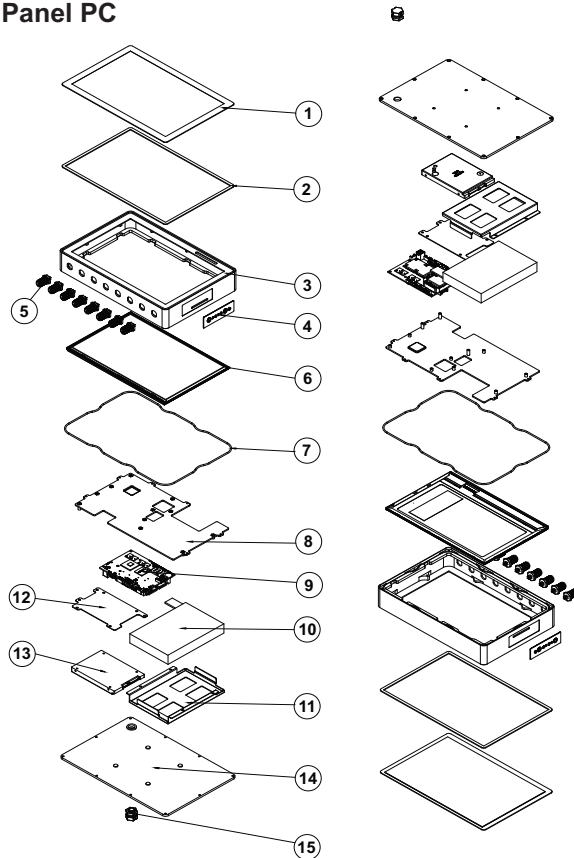
10.1" SHARK BOX PC



No.	Name	Q'ty	No.	Name	Q'ty
1	SHARK 10.1"(WP),BOX, TOP COVER, LF, AL 6063, Black, For 3I/2I	1	6	STAR 10.4", HDD RACKET, LF, SECC=1.0, MATERIAL	1
2	SHARK 10.1, O-RING FOR FRONT BEZEL, L=795MM, Black	2	7	M12 CABLE WP	x
3	SHARK 10.1"(WP),BOX, FRONT BEZEL, LF, AL 6063, Black	1	8	2.5" HDD	1
4	SHARK 10.1"(WP),BOX, BOTTOM COVER, LF, AL 6063, Black	1	9	3I Mainboard	1
5	SHARK 10.1" BOX PC, Power/Reset Function Key Pad, LF, PET, Black	1			

SHARK Waterproof Panel PC Exploded Drawing

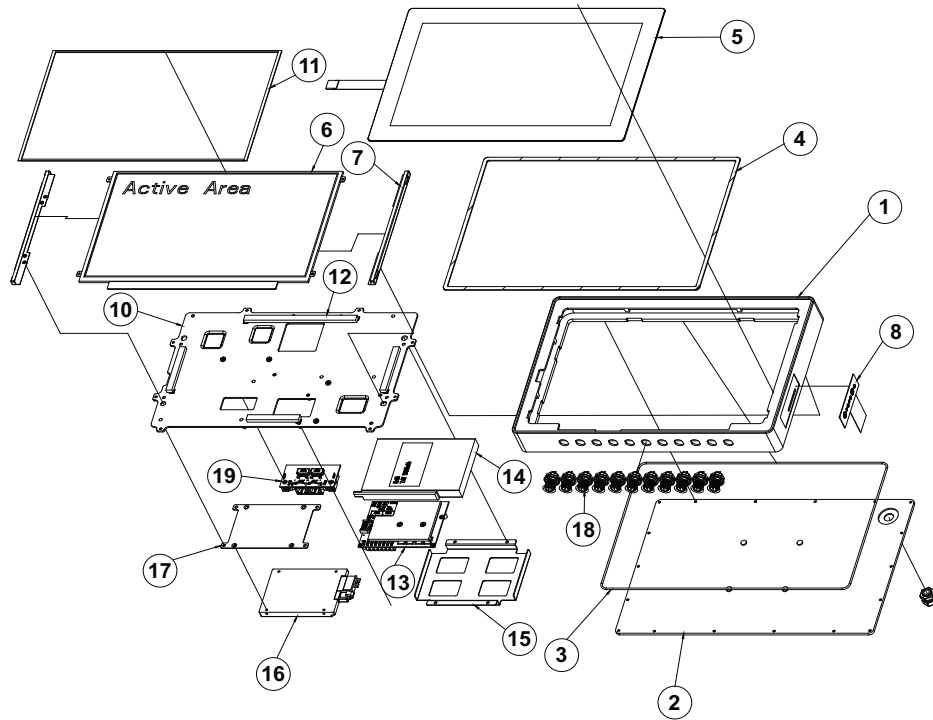
10.1" SHARK Panel PC



No.	Name	Q'ty	No.	Name	Q'ty
1	10.1" TOUCH	1	9	2I Mainboard	1
2	SHARK 10.1,Washer for Touch,LF,t=1.2mm	1	10	BATTERY 2S3P	1
3	SHARK 10.1",FRONT BEZEL-WP,LF,AL 6063,Black	1	11	BATTERY BRACKET	1
4	10.1" BOX PC,Power/Reset Function Key Pad,LF,PET,Black	1	12	HDD BRACKET	1
5	M12 CABLE WP	x	13	2.5" HDD	1
6	LCD	1	14	SHARK 10.1",Bottom Cover-WP,LF,AL 6063,Black	1
7	SHARK 10.1,O-RING FOR FRONT BEZEL, L=795MM,Black	1	15	WP-VALVE	1
8	SHARK 10.1",CHASSIS-WP,2I268H/2I385H	1			

SHARK Waterproof Panel PC Exploded Drawing

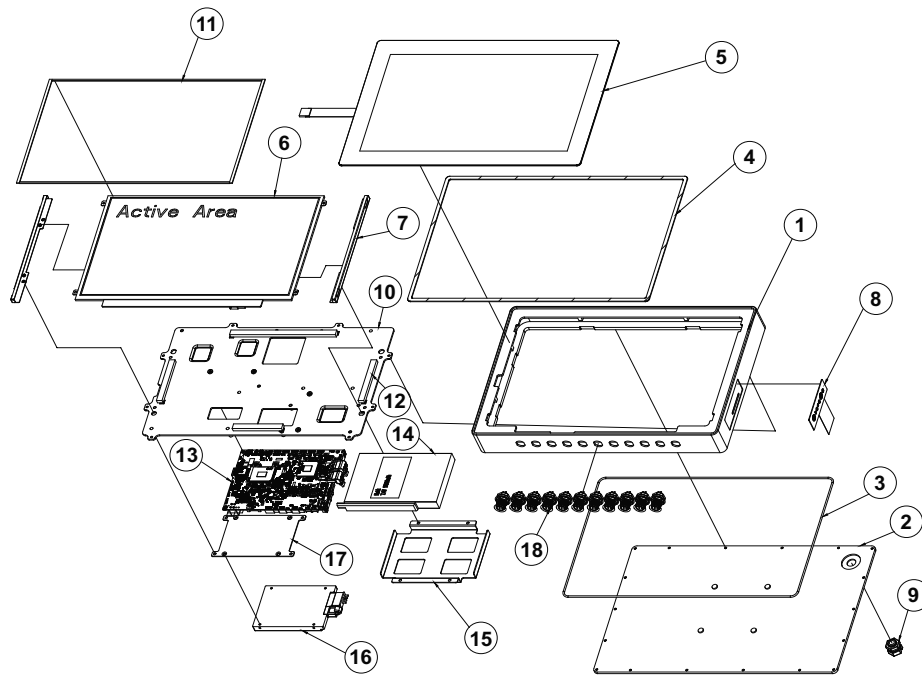
13.3" SHARK Panel PC



No.	Name	Q'ty	No.	Name	Q'ty
1	13.3" FPPC-WP, Front Bezel	1	11	SPONGE TOP SIDE	4
2	13.3" FPPC-WP, Bottom Cover	1	12	SPONGE BOTTOM SIDE	4
3	SHARK 13.3" Waterproof, O-RING	1	13	2I Mainboard	1
4	SHARK 13.3" Waterproof, Touch Sponge W P	1	14	BATTERY(OPTION)	1
5	13.3" Flat Resistive Touch Panel(W P)	1	15	BATTERY BRACKET(OPTION)	1
6	13.3" TFT-LCD	1	16	2.5" HDD(OPTION)	1
7	13.3" Flat P-PC, LCM Bracket	2	17	HDD BRACKET(OPTION)	1
8	10.1" BOX PC, Key Pad	1	18	M12 CABLE ATER PROOF(OPTION)	11
9	W P-VALVE	1	19	PW 352(OPTION)	1
10	13.3_PANEL-CHASSIS_W P	1			

SHARK Waterproof Panel PC Exploded Drawing

13.3" SHARK Panel PC








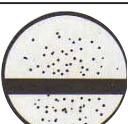

No.	Name	Q'ty	No.	Name	Q'ty
1	13.3" FPPC-WP, Front Bezel	1	10	13.3_PANEL-CHASSIS_W P	1
2	13.3" FPPC-WP, Bottom Cover	1	11	SPONGE TOP SIDE	4
3	SHARK 13.3" Waterproof, O-RING	1	12	SPONGE BOTTOM SIDE	4
4	SHARK 13.3" Waterproof, Touch Sponge W P	1	13	3l Mainboard	1
5	13.3" Flat Resistive Touch Panel(W P)	1	14	BATTERY(OPTION)	1
6	13.3" TFT-LCD	1	15	BATTERY BRACKET(OPTION)	1
7	13.3" Flat P-PC, LCM Bracket	2	16	2.5" HDD(OPTION)	1
8	10.1" BOX PC, Key Pad	1	17	HDD BRACKET(OPTION)	1
9	W P-VALVE	1	18	M12 CABLE ATER PROOF(OPTION)	11

IP (International Protection) code- Levels of Protection

IP XX

First digit "X", Protection against solids.

Protection against the contact of external solid bodies and the access to dangerous parts

Image	Level	Dimensions of the test material	Description of test condition
	0	—	No protection
	1	>50 mm.	Protect against the access with any large surface of the body, such as the back of a hand, but no protection against deliberate contact with a body part.
	2	>12.5 mm.	Protect against the access with fingers or similar objects.
	3	>2.5 mm.	Protect against the access with tools, thick wires, etc.
	4	>1 mm.	Protect against the access with most wires, screws, etc.
	5	Dust protected	Ingress of dust is not entirely prevented, but it must not enter in sufficient quantity to interfere with the satisfactory operation of the equipment; complete protection against contact
	6	Dust tight	No ingress of dust; complete protection against contact

Second digit “X”, protection against liquids.

Protection of the equipment inside the enclosure against harmful ingress of water.
















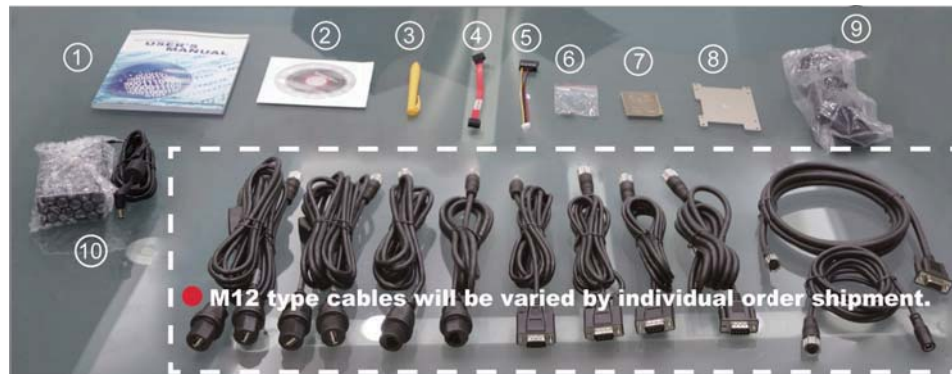
Image	Level	Protected against	Description of protection	Description of test condition
	0	No protection	—	—
	1	Dripping water	Dripping water (vertically falling drops) shall have no harmful effect.	. Test duration: 10 minutes . Water equivalent to 1mm rainfall per minute
	2	Dripping water when tilted up to 15°	Vertically dripping water shall have no harmful effect when the enclosure is tilted at an angle up to 15° from its normal position.	. Test duration: 10 minutes . Water equivalent to 3-5 mm rainfall per minute
	3	Spraying water	Water falling as a spray at any angle up to 60° from the vertical shall have no harmful effect.	. Test duration: 5 minutes . Water volume: 0.7 Litre per minute . Pressure: 80–100 kN/m ²
	4	Splashing water	Water splashing against the enclosure from any direction shall have no harmful effect.	. Test duration: 5 minutes . Water volume: 10 litres per minute . Pressure: 80–100 kN/m ²

Image	Level	Protected against	Description of protection	Description of test condition
	5	Water jets	Water projected by a nozzle (6.3mm) against enclosure from any direction shall have no harmful effects.	<ul style="list-style-type: none"> Test duration: at least 3 minutes Water volume: 12.5 litres per minute Pressure: 30 kN/m² at distance of 3m
	6	Powerful water jets	Water projected in powerful jets (12.5mm nozzle) against the enclosure from any direction shall have no harmful effects.	<ul style="list-style-type: none"> Test duration: at least 3 minutes Water volume: 100 litres per minute Pressure: 100 kN/m² at distance of 3m
	7	Immersion up to 1 m	Ingress of water in harmful quantity shall not be possible when the enclosure is immersed in water under defined conditions of pressure and time (up to 1 m of submersion).	<ul style="list-style-type: none"> Test duration: 30 minutes Immersion at depth of 1m
	8	Immersion beyond 1 m	<p>The equipment is suitable for continuous immersion in water under conditions, which shall be specified by the manufacturer.</p> <p>Normally, this will mean that the equipment is hermetically sealed.</p> <p>However, with certain types of equipment, it can mean that water can enter but only in such a manner that it produces no harmful effects.</p>	<ul style="list-style-type: none"> Test duration: continuous immersion in water Depth specified by manufacturer

Introduction of necessary tools

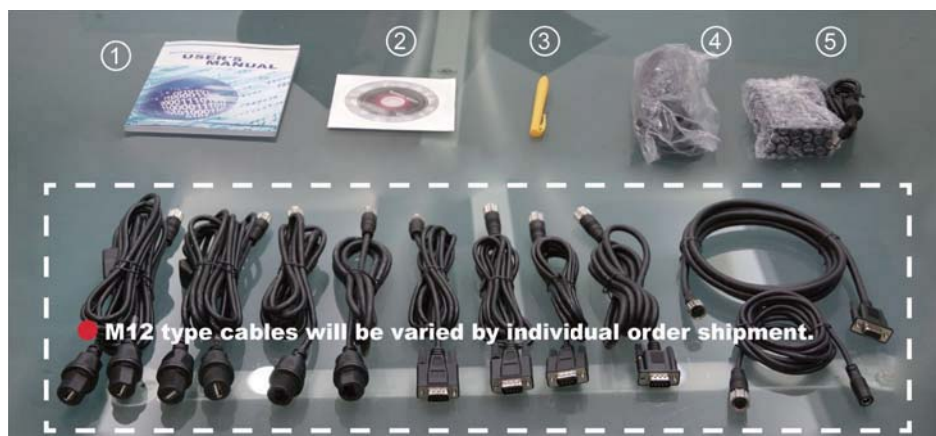
Adjustable ratcheting wrench (No. 21)		Purpose
		If the waterproof connectors are damaged, oxidized or obsoleted, use it to unfasten them.
Torque wrench		Purpose
		To examine if the torque of each waterproof connectors, are more than 5kgf-cm.
Torque screwdriver		Purpose
		To examine the torque of each upper cover screws are more than 5kgf-cm.

IP66 Packing list



	Material Code	Description	Detail Specification
1	by order	Manual	LF,M/B
2	6G8006-2349-0100	DVD-R	
3	6G9053-0001-0100	Touch Pen	LF,#9011
4	6G6001-2202-0100	SATA DATA Cable (Red,90°)	LF,L=15cm
5	6G6003-1006-0100	SATA Power Cable	LF,L=15cm,SATA to 2.0/1*4
6	Z0028-0004	Screw Package	S3*4 SIO NI*10
7	6G7800-6042-0100	Thermal Pad	LF,60*42.5*3mm
8	6G3623-3501-0000	Waterproof P-PC,HDD Kit	LF,AL=1.6,Material
9	6G6005-3901-0100	Power Cord	LF,King Cord
10	6G5212-0603-0200	60W Power Adapter,12V/5A,2.5Ø	LF,L Type(B043),FSP

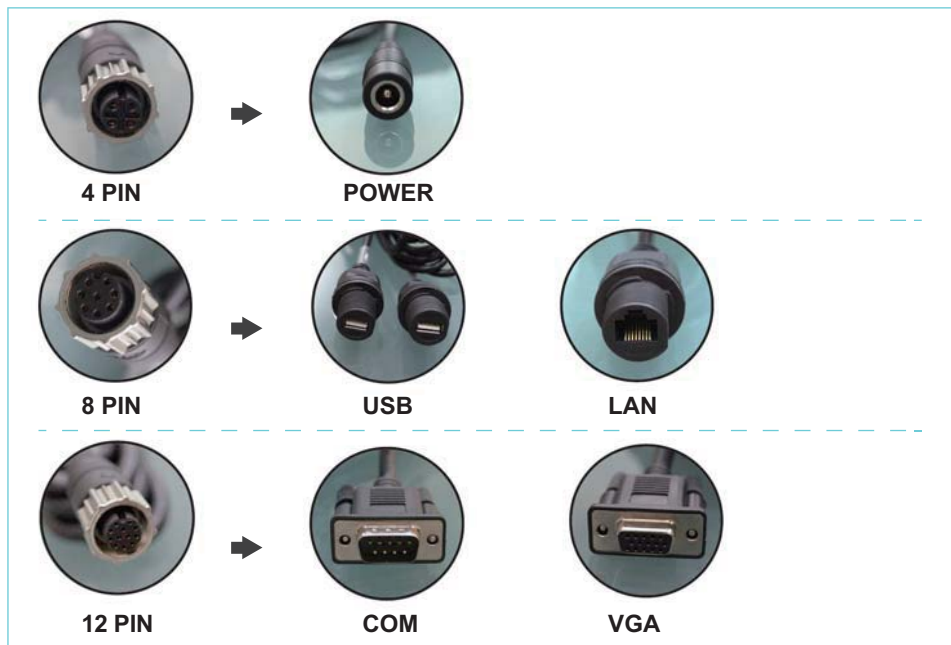
IP67 Packing list



	Material Code	Description	Detail Specification
1	by order	Manual	LF,M/B
2	6G8006-2349-0100	DVD-R	
3	6G9053-0001-0100	Touch Pen	LF,#9011
4	6G6005-3901-0100	Power Cord	LF,King Cord
5	6G5212-0603-0200	60W Power Adapter,12V/5A,2.5Ø	LF,L Type(B043),FSP



Difference of Waterproof cables



I/O Connector Pinouts



Pin Assignments Front View

LAN Connector

PIN NO.	Description	PIN NO.	Description
1	TR0-/TX-	5	TR1-/RX+
2	TR0+/TX+	6	TR2-/NC-
3	TR2+/NC	7	TR3-/NC
4	TR1+/RX-	8	TR3+/NC



Pin Assignments Front View

VGA Connector

PIN NO.	Description	PIN NO.	Description
1	BULE	2	GND
3	GND	4	DDC CLOCK
5	GREEN	6	V-SYNC
7	GND	8	H-SYNC
9	RED	10	DDC DATA



Pin Assignments Front View

COM Connector

PIN NO.	Description	PIN NO.	Description
1	DCD	2	RXD
3	TXD	4	DTR
5	GND	6	DSR
7	RTS	8	CTS
9	RI/VOLTAGE	10	+5V



Pin Assignments Front View

USB Connector

PIN NO.	Description	PIN NO.	Description
1	+5V	5	+5V
2	USB DATA -	6	USB DATA -
3	USB DATA +	7	USB DATA +
4	GND	8	GND



Pin Assignments Front View

PW Connector

PIN NO.	Description
1	DC-IN(12V)
2	GND
3	DC-IN(12V)
4	GND

SHARK Waterproof Assembly Guide



Release date: AUG. 2015

6G0000-0000-0000