



# Dispensers



**adhere**<sup>TM</sup>

better bonding from intertronics

Unit 17 Station Field Industrial Estate  
KIDLINGTON

Oxfordshire, OX5 1JD, ENGLAND

t 01865 842842 · e [info@intertronics.co.uk](mailto:info@intertronics.co.uk)  
[www.intertronics.co.uk](http://www.intertronics.co.uk)

Dispensing Equipment

# JB1113N

## Pneumatic General Purpose Dispenser

A popular analog dispenser series featuring dual 110/220V operation. An all-purpose dispenser, versatile and easy to use in a few simple steps – hook up the barrel adapter assembly (selection included) - connect the air and power - set the timer - load the barrel with material - set the air regulator – press the foot switch and start dispensing.

Suitable for all types of fluids, includes a suck-back feature to ensure low viscosity liquids do not drip. Timing interval from 0.01 to 31 seconds.



### Features

- Dispense timer
- Wide range of applications
- Barrel suck-back ensures no dripping
- Low-cost system with high reliability

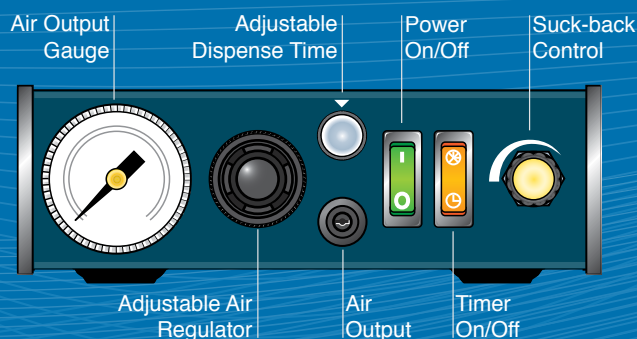
### Model

JB1113N

Dispenser 110/220V CE

### Specifications

Size:	8.63" x 8.50" x 2.63" (21.92 x 21.59 x 6.68 cm)
Dispense time:	0.01 - 31 seconds
Cycle:	Momentary with time or continuously maintained
Voltage:	100 - 240 VAC 50/60Hz
Internal voltage:	24 VDC
Air input:	70 to 100 psi (5 to 7 bar)
Air output:	1-100 psi (0.1 - 7 bar)
Standards:	CE approved, RoHS Compliant
Weight:	3.5 lbs (1.59 kg)



# DSP501N

## Dispenser & 3-Way Valve Controller

Featuring a larger internal air solenoid recommended for operations that require an immediate and fast reaction for de-pressurization. Examples include: Collapsible toothpaste-type tube, caulking, cartridge reservoirs, valves and rotary-table operations. The higher volume exhaust prevents post compression of materials contained in tubes, avoiding stringing.

Suitable for all types of fluids, includes a suck-back feature to ensure low viscosity liquids do not drip. Timing interval from 0.01 to 31 seconds.



### Model

DSP501N

Dispenser 110/220V CE

### Features

Dispense timer

3-way valve controller

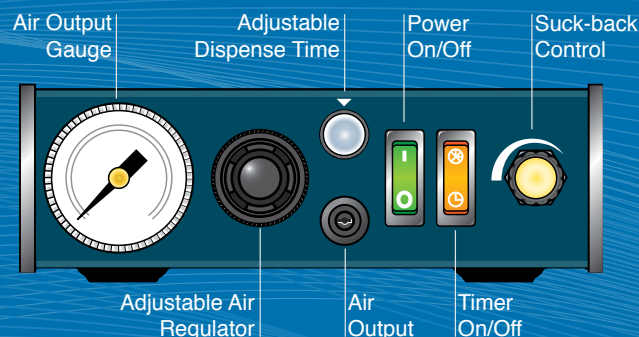
Suitable for tube dispensing

Barrel suck-back ensures no dripping

Large solenoid air exhaust

### Specifications

Size:	8.63" x 8.50" x 2.63" (21.92 x 21.59 x 6.68 cm)
Dispense time:	0.01 - 31 seconds
Cycle:	Momentary with time or continuously maintained
Voltage:	100 - 240 VAC 50/60Hz
Internal voltage:	24 VDC
Air input:	70 to 100 psi (5 to 7 bar)
Air output:	1-100 psi (0.1 - 7 bar)
Standards:	CE Approved, RoHS Compliant
Weight:	4 lbs 2 ozs (1.87 kg)





# DSP502N

## Dispenser with Vacuum Gauge

The DSP502N includes an analog gauge to provide a visual indication of the level of suck-back measured in psi.

The unit's larger internal air solenoid is recommended for operations that require an immediate high volume air exhaust, such as collapsible toothpaste-type tube, caulking, cartridge reservoirs, valves and rotary table operations. A higher volume exhaust helps prevent drooling of materials contained in tubes.



### Features

- Dispense timer
- Suitable for tube dispensing
- Barrel suck-back ensures no dripping
- Large solenoid air exhaust
- Vacuum suck-back display

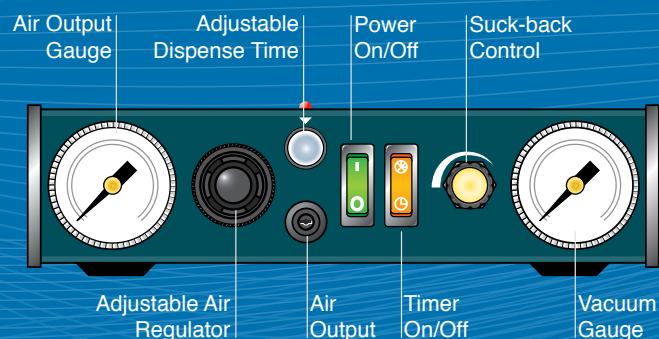
### Model

DSP502N

Dispenser 110/220V CE

### Specifications

Size:	10.50" x 8.25" x 2.63" (26.67 x 20.95 x 6.68 cm)
Dispense time:	0.01 - 31 seconds
Cycle:	Momentary with time or continuously maintained
Voltage:	100 - 240 VAC 50/60Hz
Internal voltage:	24 VDC
Air input:	70 to 100 psi (5 to 7 bar)
Air output:	1-100 psi (0.1 - 7 bar)
Standards:	CE Approved, RoHS Compliant
Weight:	4.25 lbs (1.93 kg)



# SL101N

## Digital Dispenser

An automatic digital dispenser with a bright LCD display and “teach & learn” process programming. Up to 9 independent dispensing programs may be stored for fast recall.

The SL101N has three modes of operation. The first is autocycling, which operates by sequencing a self-taught cycle of events including a dispense time together with a wait or pause condition between the cycles. This feature enables the SL101N to be used as a stand-alone semi-automated dispensing system. Manual-mode enables a dispense operation to be manually controlled by a foot pedal, and Timed-mode dispenses at a pre-set time.



### Model

SL101N

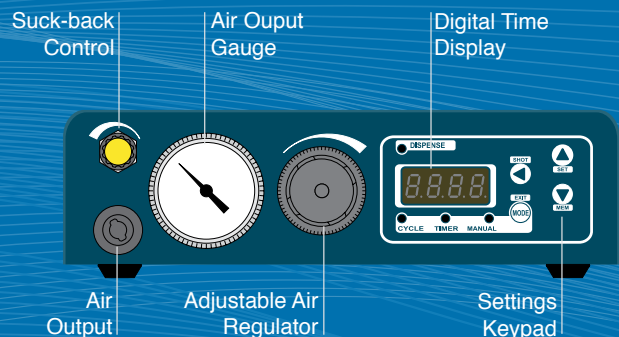
Digital dispenser 110/220V CE

### Features

- Digitally controlled program
- Easy to use touch sensitive controls
- Suck-back ensures no dripping
- Suitable for a wide range of dispensing
- Stores up to 9 dispensing routines

### Specifications

Size:	8.63" x 8.50" x 2.63" (21.92 x 21.59 x 6.68 cm)
Dispense time:	0.01 - 99.99 seconds
Operation Modes:	Manual, Timed, Cycle
Voltage:	100 - 240 VAC 50/60Hz
Internal memory:	9 dispensing program locations
Air input:	70 to 100 psi (5 to 7 bar)
Air output:	1-100 psi (0.1 - 7 bar)
Standards:	CE Approved, RoHS Compliant
Weight:	3.5 lbs (1.59 kg)



# VC1195N

## 4-Way Valve Controller

The VC1195N is a 4-way valve controller that can be used to control one or two valves simultaneously. The controller is suitable for 790HP-LF, LV-0126RJ, 700RV, 800RV, VBP117, VDP305, VDP100,HPN200, HP600S, HP600L, VDP150, VMS400, VMP30H, VP300, and MV-0180LF valves.

The valve controller provides a continuous “valve-off” state and remains in this mode until a signal is received to switch to “valve-on” mode. This instruction can derive from a remote robotic device or by the foot switch provided. When the timer is off, the valve will remain in “valve-on” state as long as the footswitch is pressed or to allow a robot to control the operation. When the timer is selected, a momentary pulse will activate the timer to open the valve for a programmed period and then close the valve automatically.

The VC1195N will deliver accurate and repeatable dots or beads for any application.



### Features

- Simultaneous control of two valves
- Timing interval from 0.01 – 31 seconds
- Fast response internal pneumatic solenoid

### Model

VC1195N                      Controller 110/220V CE

### Specifications

Size:	10.50" x 8.25" x 2.75" (26.67 x 20.95 x 6.98cm)
Digital timer:	0.01-1, 0.1-10, 0.2-20, 0.3-30 seconds
Cycle initiation:	Momentary or continuous
Voltage:	100 - 240 VAC 50/60Hz
Internal voltage:	24 vdc
Repeat tolerance:	0.1%
Air input:	70 to 100 psi (5 to 7 bar)
Air output:	1-100 psi (0.1 - 7 bar)
Weight:	4 lbs. 3 oz. (1.90 kg)

### Valves

790HP-LF	HP600L
LV-0126RJ	700RV
VDP150	800RV
VMS400	VBP117
VMP30H	VDP305
VP300	VDP100
MV-0180LF	VPN200
HP600S	

### Parts

560033-LF	Power Cord 110V
560033E-LF	Power Cord 220V
560033E-PLUG-LF	Power Cord with plug 220V
560752	Input air hose with accessories
560027D	Foot pedal and cord
560524	Air hoses x2



# Autotube Dispenser

Colapsible Tube Dispenser

Dispensers

The Autotube system was designed to dispense liquids, pastes, greases, silicones and similar liquids directly from the manufacturer's "collapsible" tube. The previous method of hand-squeezing the material out of the tube created many problems such as:

- Transfer of the material was messy and wasteful.
- Air bubbles were introduced during transfer.
- Contamination was introduced during transfer.

With the Autotube method all one has to do is to attach an "adapter" to the material tube, then drop the tube in a cartridge reservoir and you're ready to start dispensing. Dispensing can be controlled by either a foot valve or timed dispenser DSP501N for a controlled shot. The Autotube assembly can be hand held or mounted on a stand.

## Models

ATD100C	Autotube dispenser 6 oz (100 gm tube)
ATD200C	Autotube dispenser 8 oz (200 gm tube)
ATD300C	Autotube dispenser 1/10 Gal. (300 gm tube)
DSP501N	dispenser 110/220V CE

Recommend first time users supply tube sample.

## Gun Handle *(Optional)*

560600	gun handle only
560599	switch assembly only
560598	gun handle & switch assembly



## Features

- Eliminates waste
- Avoids material contamination
- Improves operator safety
- Prevents tube damage

## DSP501N Specifications *(Not Included)*

Size:	8.63" x 8.50" x 2.63" (21.92 x 21.59 x 6.68cm)
Dispense time:	0.01 - 31 seconds
Cycle:	Momentary with time or continuously maintained
Voltage:	100 - 240 VAC 50/60Hz
Internal voltage:	24 VDC
Air input:	70 to 100 psi (5 to 7 bar)
Air output:	1-100 psi (0.1 - 7 bar)
Standards:	CE Approved, RoHS Compliant
Weight:	4 lbs 2 ozs (1.87 kg)

## Standard Accessories *(Included)*

Part#	Description	ATD100C	ATD200C	ATD300C
5601357	connecting hose	X	X	
560062A	6oz. cartridge	X		
560517A	8oz. cartridge		X	
560068A	6oz. cartridge retainer	X		
560520A	8oz. cartridge retainer		X	
5601376	retaining cap	X	X	
560545	tip adapter	X	X	X
880001-A	adapter "A"	X	X	X
880001-B	adapter "B"	X	X	X
880001-C	adapter "C"	X	X	X
880001-D	adapter "D"	X	X	X
880001-Blank	adapter blank	X	X	X
560516A	1/10 gal. cartridge			X
580091H-A	1/10 gal. retainer & cap			X

# PP300-GL-A

## Clear Chamber Dispenser

A clear glass pressure chamber for dispensing low viscosity liquids directly from bottles and up to 1lb. jars. Regulated air pressure forces the liquid in the bottle up through a disposable tube to a connector, which can be interfaced to a valve or dispensing pen. The PP300-GL-A is ideal for control of hazardous materials, such as solvents and cyanoacrylates.



### PP300-GL-A, 710PT-LF, DSP501N - pinch-tube valve system

A combination of a 710PT-LF pinch-tube valve mounted to the PP300-GL-A and controlled via a DSP501N dispenser can accurately and safely apply microshots of low viscosity liquids. All parts in contact with the material are disposable.

### PP300-GL-A, 700PTPCW - Manual pinch-tube pen system

The 700PTPCW dispensing pen when used with the PP300-GL-A provides flexibility in applying continuous lines or microdots. An on/off lever controls the amount of material delivered.

## Features

All material contact parts are disposable

Material is visible without opening chamber

Suitable for most low viscosity liquids

## Models

PP300-GL-A	Pressure chamber glass
710PT-LF	Pinch tube valve
560605	Clamp for pinch tube valve
560606	Support rod for pinch tube valve
DSP501N	Dispenser 110/220V CE
700PTPCW	Pinch tube pen

## Specifications

Size:	6.00" x 6.00" x 11.00" (15.24 x 15.24 x 27.94cm)
Air input:	to regulator 70 to 100 psi (5 to 7 bar)
Air output:	from regulator max 30psi (2 bar)
Weight:	9.25 lbs. (4.20 kg)
Disposables:	Lines and fittings are polyethylene

## PP300-GL-A Parts (included)

Part #	Description
560607	dispense tube 0.070"ID
560608*	dispense tube 0.100"ID
560609	luer lock fitting 0.070"ID
560610*	luer lock fitting 0.100"ID
560611	gauge 0-30 psi
560612	knob assembly
560612B	bushing
560613	clamp for tube
560614	reducer nipple
560615V	O-ring (viton)
560616	relief valve
560618	reservoir glass (PP300-GL-A)
560620	dip tube
560571	regulator 0-25 psi
560792	flat seal
580108	quick connect 1/4" MPT

\* included upon request



Engineered to specifically address the waste and discomfort that result from dispensing materials in collapsible tubes. A comfortable, balanced design that safely protects the tube from damage and the operator from contamination. These features eliminate waste and improve quality by avoiding the introduction of air bubbles when transferring material, thus reducing the possibility of particulate contamination and ensuring that the entire tube is exhausted. Regulated air supply is required.



### Features

- Eliminates waste
- Avoids material contamination
- Improves operator safety
- Prevents tube damage

### Model

TD101 Tube dispenser

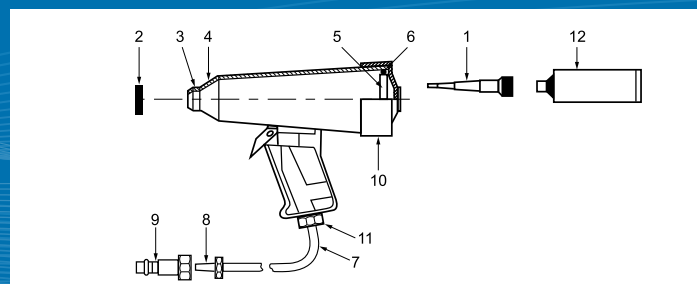
Recommend first time users supply tube sample.

### Specifications

Size:	7.50" x 3.00" x 6.75" (19.05 x 7.62 x 17.15cm)
Max. tube length:	7.38" (18.74 cm) 5.5 fl oz (162 ml)
Cycle:	Trigger actuated manually timed
Regulated Air input:	Regulator (not included)
Start pressure:	recommended at 20 psi (1.38 bar)
Max. pressure:	50 psi (3.45 bar)
Weight:	With out tube 9.6 oz. (272 gm)

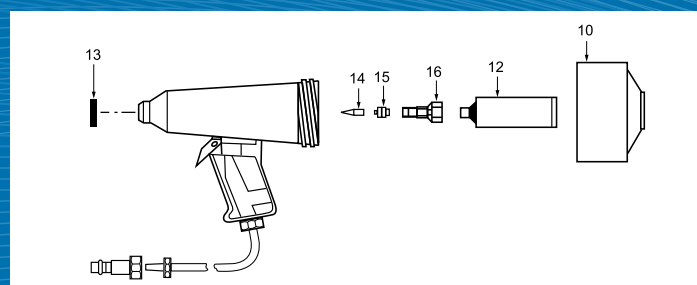
### Replacement parts (included)

Item	Part #	Description	Item	Part #	Description
1	560700	Nozzle	7	560705	5' hose
2	560699	Nozzle nut	8	560704	hose fitting
3	560698	O-ring	9	560703	connector
4	560697	Lock ring	10	560702	cap
5	560696	Retaining ring	11	560701	hose barb
6	560695	Seal	12	Tube	(not supplied)



### Replacement parts (included)

Item	Part #	Description	Item	Part #
12	Tube	(not supplied)	16	880001-KIT includes:
13	560707	Adapter nut		880001-A adapter
14	560706	tip set		880001-B adapter
15	560545	Luer lock adapter		880001-C adapter



# DB815

## Foot Valve Dispenser

A basic air-powered system, floor mounted and foot actuated. Includes a three-way air valve and built in air regulator, ideal for non-critical dispensing operations. As long as the foot pedal is depressed, fluid will be dispensed.

The unit is suitable for all types of fluids. The model with suck-back option ensures that low viscosity liquids do not drip.



### Features

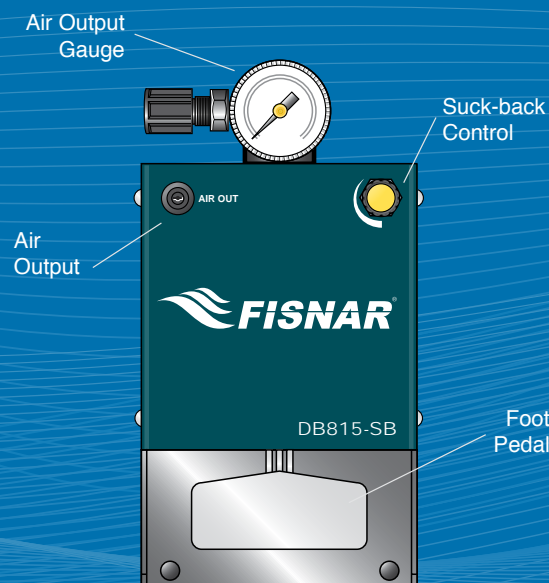
- Economical and simple to use
- Wide range of applications
- Barrel suck-back option ensures no dripping
- Heavy duty design

### Model

DB815	Dispenser
DB815-SB	Dispenser with suck-back

### Specifications

Size:	DB815	4.50" x 8.50" x 4.88" (11.43 x 21.59 x 12.40cm)
	DB815-SB	4.50" x 8.50" x 5.38" (11.43 x 21.59 x 13.66cm)
Cycle:	Continuously maintained by user	
Foot Pedal:	Air valve integral in unit	
Air input:	70 to 100 psi (5 to 7 bar)	
Air output:	1-100 psi (0.1 - 7 bar)	
Weight:	DB815	3.50 lbs (1.59 kg)
	DB815-SB	3.80 lbs (1.73 kg)



# Vacuum Pick-Up Systems

Vacuum Pick and Place

Dispensers

## VPP511-LF (electric foot switch operated)



The VPP511-LF features an air solenoid electrically switched by pressing a foot pedal. This provides two advantages:

1. The vacuum is only actuated when the foot pedal is pressed.
2. The part can be released by foot pedal control, keeping the hand entirely still during the operation.

### Model

VPP511-LF	vacuum pick-up unit 110V
VPPE511-LF	vacuum pick-up unit 220V
560046-NH*	vacuum pick-up pencil no hole (included)

## VPP803-LF (Air only system)



For delicate handling of small parts and components, including miniature, surface mount and chip scale packages. Designed to capture the part and to place the component gently in position. Closing a small hole in the hand-piece with your finger creates the vacuum. To release, uncover the hole by removing your finger.

### Model

VPP803-LF	vacuum pick-up unit
560046*	vacuum pick-up pencil (included)

## Specifications

Size:	VPP511-LF	5.50" x 7.00" x 2.63" (13.97 x 17.78 x 6.68cm)
	VPP803-LF	3.75" x 7.50" x 2.62" (9.52 x 19.05 x 6.65cm)
Cycle:	VPP511-LF	Foot pedal control
	VPP803-LF	Continuous
Air input:		20 to 100 psi (1.33 to 7 bar)
Vacuum:	VPP511-LF	Vacuum gauge display
	VPP803-LF	Up to 16 in. hg
Weight:	VPP511-LF	2.5 lbs (1.14 kilos)
	VPP803-LF	12 ounces (341 gm)

## Parts (\* included with pencils)

Part #	Description
560047	Vacuum pad 0.140" (3.5mm) dia
560048	Vacuum pad 0.200" (5.1mm) dia
560049	Vacuum pad 0.250" (6.4mm) dia
560050	Vacuum pad 0.320" (8.1mm) dia
560051	Vacuum pad 0.400" (10.2mm) dia
560052	Vacuum tip #14 0.063" (1.60mm) dia
560053	Vacuum tip #18 0.033" (0.84mm) dia
560054	Vacuum tip #21 0.020" (0.51mm) dia



# PPD-130

## Peristaltic Pump Dispenser

Peristaltic pump dispensers transfer low viscosity liquids by pressure displacement applied to a turning rotor against a tube carrying material. Usually these pumps are chosen because the liquids are hazardous or difficult to work with and it is advisable to limit operator contact. Another reason is that peristaltic pumps are air free.

The model PPD-130 offers excellent features for air-free dispensing of materials such as cyanoacrylate, solvent, alkaline and acid. Dispense outputs can be timed from 0.01 - 99.99 seconds with flow speeds from 0.01 - 6ml/min using Teflon tubing and from 0.1 - 20ml/min using silicone tubing. The pump is bidirectional allowing snuff-back after discharge to prevent dripping of the fluid.



### Operation

Suitable for small shots and continuous operation

Adjustable rotor speed in volume 0 - 10

Self priming from bottle or jar

For smaller discharges at lower flow rates, Teflon tubing is used

For larger discharges at higher flow rates, silicone tubing is used

System operated by finger switch on holder or remotely from I/O connector at rear of unit

Timer display counts down for discharge

### Model

PPD-130 Peristaltic Pump 110-240V 50/60Hz

### Features

Air-free dispensing

Forward and reverse motion

Instant reverse for snuff-back cuts off liquid flow

Adjustable interval before reverse direction

Teflon and silicone tube options

Continuous or timer modes

Large segment digital LED display

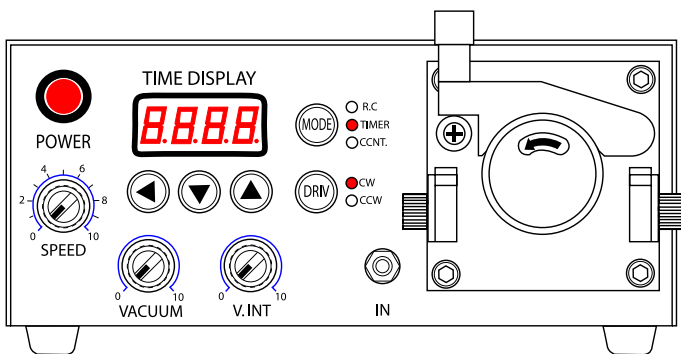
Output signal to indicate end of dispense cycle

Clean room compatible

Simple load mechanism also provides easy cleaning

### Accessories (included)

Part #	Qty.	Description	Part #	Qty.	Description
562030-T	1	standard rotor for standard tubes	560984P	1	hose 1 foot (304.8mm) 1.0 x 1.6mm
560989-D	1	nozzle holder (with switch)	560985P	1	hose 1 foot (304.8mm) 1.4 x 2.0mm
561010-D	1	nozzle 1.7mm diameter	560995P	1	hose 1 foot (304.8mm) 1.9 x 2.5mm
561011-D	1	nozzle 2.1mm diameter	560996A	1	hose 1 foot (304.8mm) 2.4 x 3.0mm
561012-D	1	nozzle 2.6mm diameter	562031-D	1	9-pin connector
561013-D	1	nozzle 3.5mm diameter	562032-D	1	foot pedal (optional, not included)

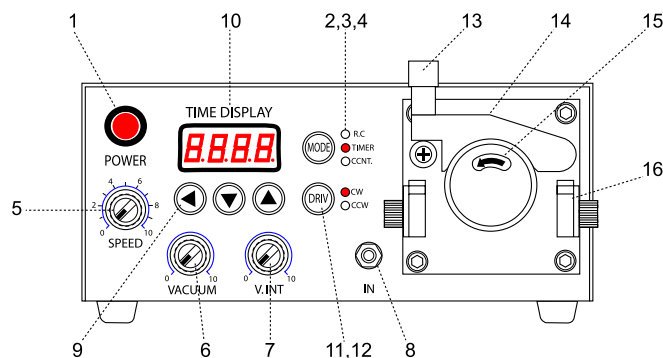


## Specifications

Size:	7.18" x 3.20" x 6.73" (182.4 x 81.2 x 171mm)
Dispense time:	0.01 - 99.99 seconds
Cycle initiation:	continuous & timed
Input voltage:	110-240V, 50/60 Hz
Internal voltage:	5 VDC
Rotor speed:	up to 120 rpm (max.)
Flow speed:	0.01 - 6ml/min. (Teflon tube) 0.1 - 20ml/min. (Silicone tube)
Dispense pressure:	over 1.5Kg/cm2
Direction of pump:	both directions (Forward / Reverse)
Snuff-back:	programmable by reverse rotation
Digital display:	time count down
I/O:	connection for remote operation
Weight:	6.6lbs (3kg)

## Functions

No.	Item	Function
1	Power switch	LED lamp signals that the switch is on
2	RC mode	remote control mode when operating the LED pulses
3	Timer mode	time range - up to 99 sec
4	Cont. mode	continuous operation
5	Speed adj. dial	adjusts the deposit size (0 - 10 volume)
6	Vacuum adj. dial	fluid cut off after the dispense operation
7	Vacuum interval timer	adjustable within 0 - 3 sec
8	Manual input jack	finger / foot switch plug
9	Time set button	to set fluid outlets 0.01 - 99.99 sec
10	Timer display	LED counts down
11	Ccw/cw fix s/w	ccw: counterclockwise
12		cw: clockwise
13	Guide lock	to lock a tube guide
14	tube guide	to support a tube installed in a rotor
15	Rotor head	extracts fluid from a tube
16	Tube holder	holds the tube at both ends supported by the rotor



## Tubing, nozzles & optional pump heads

Pump Head	Clear Tubing	Black Tubing	I.D. x O.D.	Suitable Nozzle Type	
Part #	Part #	Part #	Millimeters	Part #	Millimeter
562030-T	560984P	560984BA	1.0 x 1.6	561010-D	1.7mm
	560985P	560985BA	1.4 x 2.0	561011-D	2.1mm
	560995P	560995BA	1.9 x 2.5	561012-D	2.6mm
	560996A	560996BA	2.4 x 3.0	561013-D	3.5mm

### Optional Pump Heads

562030-M	560997P	560997BA	0.25 x 0.75		
562030-S	560998A	560998BA	0.50 x 1.00	561008-D	0.9mm
	560999A	560999BA	0.60 x 1.00		
562030-G	562033		0.50 x 2.50	561012-D	2.6mm
	562034		3.00 x 5.00		

# F350N

## Pneumatic Cartridge Gun Dispenser

A pneumatic ergonomic gun designed for precision dispensing of sealants, potting compounds, adhesives and silicones packaged in disposable plastic cartridges. Engineered and constructed for rigorous production environments, the F350N is also quiet in operation.

The F350N series is available with retainers to suit 2.5 oz (59cc), 6 oz (156cc), 8 oz (214cc) and 12 oz (310cc) cartridges. Retainers are affixed to the gun via a quick connect secure bayonet lock feature allowing easy cartridge replacement.

A selection of different length air hoses is available and ordered separately.



### Specifications

Cartridge Sizes:	2.5oz. (59cc), 6oz. (156cc), 8oz. (214cc), 12oz. (310cc)
Cycle:	Trigger actuated manually timed
Shot volume:	Red regulator wheel
Regulated air input:	(regulator not included)
Air pressure:	0-100 psi (0-6.9 bar)
Weight:	Gun only 1.11lbs (0.505 kg)

### Features

- Precise dispensing
- Suits all popular cartridges
- Dispense volume adjusted by regulator wheel
- Comfortable trigger operation
- Constant even pressure in cartridge
- Eliminates waste
- Quick easy removal and replacement of cartridges
- Quiet operation

### Hose Assemblies (1/4" NPT)

Hose assemblies to fit the metal air fitting are available in 1.5 meter (5 foot) increments with a female 1/4" universal fitting for air supplies. Assemblies come with 1/4" tubing.

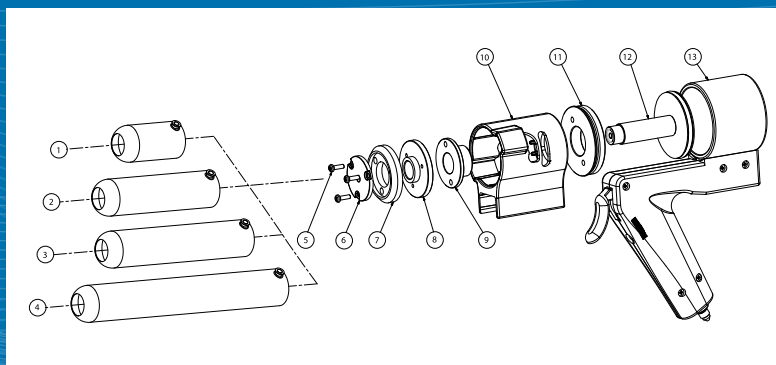
Part #	Length	Part #	Length
2890500	1.5 m (5ft)	2890200	5.9 m (20ft)
2890100	2.9 m (10ft)	2890250	7.3 m (25ft)
2890150	4.4 m (15ft)	2890300	8.9 m (30ft)

### Models *(complete pneumatic gun less hose)*

F351N	gun only - no retainer
F352N	gun & retainer 59cc (2.5 oz)
F353N	gun & retainer 156cc (6 oz)
F354N	gun & retainer 214cc (8 oz)
F355N	gun & retainer 310cc (12 oz)

### Replacement Parts *(included)*

No.	Part #	Description
1	5601483	Retainer, 59cc (2.5 oz)
2	5601484	Retainer, 156cc (6 oz)
3	5601485	Retainer, 214cc (8 oz)
4	5601486	Retainer, 310cc (12 oz)
5	3500010	Screw for 1608/1908
6	3500020	Holding washer for 1608
7	3500030	Gasket
8		Front
9		Screw
10		Bayonet adaptor for cartridge holder
11		Adapter holder
12		Shaft, complete
13		Handle





# F950N Series

## Manual Cartridge Gun Dispenser

Dispensers

A manual ergonomic gun designed for accurate dispensing of sealants, potting compounds, adhesives and silicones that are packaged in disposable plastic cartridges.

The F950N is excellent for applying sealants, adhesives and other materials in remote areas where no air supply is available, including field repair applications. The smooth stroking handle is made of an engineered plastic for tough, durable, long term use. The dispense rod is released from pressure after every stroke to help eliminate material drooling.

The F950N series is available with retainers to suit 2.5 oz(59cc), 6 oz (156cc), 8 oz (214cc) and 12 oz (310cc) cartridges. Retainers are affixed to the gun via a quick connect secure bayonet lock feature allowing easy cartridge replacement.

### Features

Portable

Requires no air or power supply

Cartridge sizes 59cc, 156cc, 214cc and 310cc  
(2.5, 6, 8 and 12oz)

Ergonomic and lightweight

Rugged, engineered plastic and metal construction

Easy and simple to operate

Dispenses a wide range of materials

Handles thick viscous material and low viscosity liquids



### Models

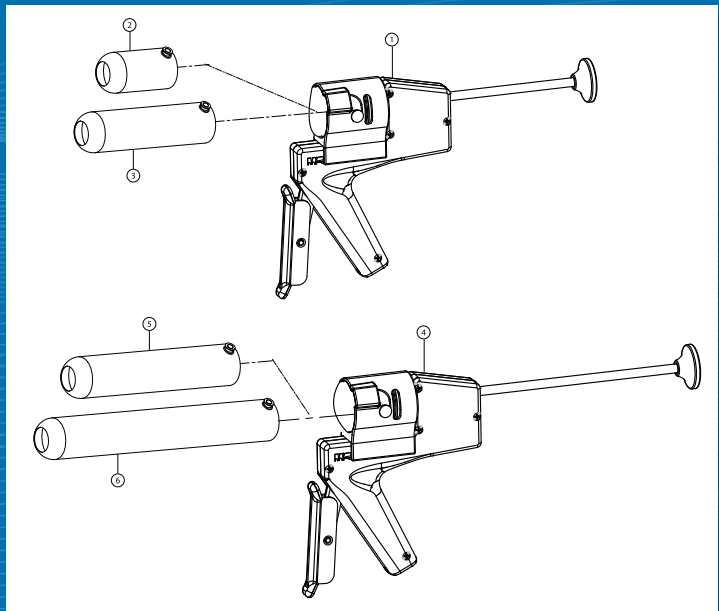
F951N	gun & retainer 59cc (2.5 oz)
F952N	gun & retainer 156cc (6 oz)
F953N	gun & retainer 214cc (8 oz)
F954N	gun & retainer 310cc (12 oz)

### Specifications

Cartridge sizes:	2.5 oz (59cc), 6 oz (156cc), 8 oz (214cc) 12 oz (310cc)
Cycle:	Trigger actuated manually timed
Shot Volume:	Red regulator wheel
Weight:	Gun only - 2.5 lbs.

### Replacement Parts (included)

No.	Part #	Description
1	9500000	Handle Assembly (Short Rod)
2	5601483	Retainer, 59cc (2.5 oz)
3	5601484	Retainer, 156cc (6 oz)
4	9500010	Handle Assembly (Long Rod)
5	5601485	Retainer, 214cc (8 oz)
6	5601486	Retainer, 310cc (12 oz)



# Caulking Dispenser

Manual Caulking Guns and Retainer

## 580091H-A 1/10th Gallon Retainer & Cap

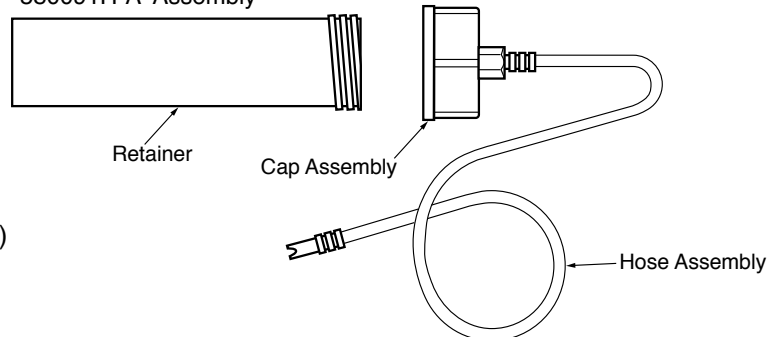


The 580091H-A is used to dispense directly from standard caulking cartridges without mess or waste. The retainer containing the cartridge is sealed with a cap connected to a model DSP501N dispenser (optional) to provide a timed shot without post extrusion. Dispensing can be delivered with fine gauge luer lock tips or with larger nozzles. Dispensing pressure should not exceed 65 psi (4.48 bar). An adapter is available for non-removable nozzles. 1/10th gallon cartridges and accessories are also available for use with the model 580091H-A retainer.

### Model

580091H-A	Retainer and cap 1/10th gallon
560546	Nozzle adapter
5601449	Luer lock tip adapter (Pk/3)
5601368	1/10th gallon cartridge (Pk/10)
5601355	1/10th gallon plunger white (Pk/10)
5601388	1/10th gallon threaded tip cap (Pk/10)
5601384	1/10th gallon flange seal cap (Pk/10)
DSP501N	Dispenser 110/220V CE

580091H-A Assembly



## 580112C Manual Air Caulking Gun



Dispense caulk and sealant materials. Connect the 580112C to a regulated air supply to dispense directly from the caulking tube. Most materials will dispense satisfactorily from 12 to 30 psi (0.80 – 2.0 bar). Do not exceed 60 psi (4 bar).

### Model

580112C	Caulking gun
---------	--------------

### Specifications

Operating Pressure:	Less than 60 psi (4 bar)
Tube size:	1.97" x 8.50" (50 x 216mm)
Overall Length:	9.25" (235mm)
Weight:	0.55lb (0.25kg)

# Barrel Filling

Automatic and Manual Barrel Loaders

Dispensers

## 560022 & 560548 Automatic Barrel Loaders



An efficient method of transferring greases, epoxies, silicones, solder pastes and other thixotropic materials into a disposable barrel. The barrel loaders can be connected to a DSP501N dispenser (optional) to control the operation.

The model 560022 barrel loader is for pre-filled 12 oz cartridges, which are placed inside a vertical container mounted on the stand. The model 560548 barrel loader is for a 1/10th gallon cartridge. The barrel attachment assembly is threaded to accept luer lock barrels. Activating the DSP501A causes the material to rise inside the barrel. This method simplifies loading and reduces the possibility of entrapped air in the fluid.

The 560022 includes stand, retainer support, 12 oz retainer and cap, one (1) empty 12 oz cartridge and plunger, an outlet cap and special barrel attachment assembly. The model 560548 1/10th gallon barrel loader also uses the model DSP501A dispenser.

### Replacement parts (Included)

Part #	Description	Part #	Description
5601367	12 ounce cartridge (Pk/10)	914	elbow 1/4" NPT, 3/8" tube
5601354	plunger (Pk/10)	915	flexible tube, 3/8" O.D.
912	bushing	560710	luer lock cap
913	male connector 1/4" NPT, 3/8" tube	560733	1/4" 28UNF luer lock connector

### Models

560022	cartridge barrel loader
560548	1/10th gallon barrel loader
560546	1/10th gallon nozzle adapter
DSP501N	dispenser 110/220V CE

## 560548-M & 560022-M Manual Barrel Loaders



The model 560548-M loads a barrel directly from a 1/10 gallon caulking tube. The model 560022-M loads a barrel from a 12 ounce cartridge. The barrel loader is connected to an air regulator and set to a pressure suitable for the material but less than 65psi (4.48 bar). A switch on the side of the stand activates the airflow and is switched off when the material reaches the desired level. The barrel attachment assembly is threaded to accept luer lock barrels.

### Models

560548-M	Barrel Loader 1/10th gallon caulking
560546	1/10th gallon nozzle adapter
5601368	1/10th gallon cartridge (Pk/10)
5601355	1/10th gallon plunger white (Pk/10)
5601388	1/10th gallon threaded tip cap (Pk/10)
5601384	1/10th gallon flange seal cap (Pk/10)
560022-M	dispenser barrel loader cartridge for use with a 12 oz cartridge (included)

### Replacement parts (Included)

561105	1/4" NPT street elbow
560733	1/4" 28 UNF luer lock connector
560734	1/4" 28 UNF 1/4" MPT reducer
560710	luer lock cap



# Reservoir Tanks

## Pressurized Material Reservoirs

Reservoirs are used to feed bulk fluids to a valve or dispensing pen. A variety of sizes and types is available, including bottom porting for very high viscosity liquids and top porting for low to medium viscosities. An "open top" style is used if liners are required to prevent the material from making contact with the sides of the container or if the fluid requires an agitator.



**Type A**

Type A reservoir is bottle style.

**Type B**

Type B reservoir is open top style for insertion of liners or containers.

## Models

Model	Size	Style	Agitator	Ported	Base	ASME rating	Max pressure	Regulator gauge (psi)	Material 10ft. hose
I&J2601-107	2 qt.	bottle	no	top	metal	no	50 psi	0-60	1/4"
IJ-0100	1 gal.	bottle	no	bottom •	metal	yes	125 psi	0-100	3/8"
IJ-0100R	1 gal.	bottle	no	top	rubber	yes	125 psi	0-100	1/4"
IJ-0200	2 gal.	bottle	no	bottom •	metal	yes	125 psi	0-100	3/8"
IJ-000R	2 gal.	bottle	no	top	rubber	yes	125 psi	0-100	1/4"
IJ-83B-500	2.8 gal.	open top	no	top ••	metal	yes	80 psi	0-60	1/4"
IJ-83Z-211	2.8 gal.	open top	yes	top ••	metal	yes	80 psi	0-60	1/4"
IJ-0300	5 gal.	bottle	no	bottom •	metal	yes	125 psi	0-100	3/8"
IJ-0300R	5 gal.	bottle	no	top	rubber	yes	125 psi	0-100	1/4"

All reservoirs are supplied with a 10' (3.05m) material hose and 1/4" (6.35mm) airline.

## Parts

Part #	Description
560554	material shut off valve assembly for reservoirs marked •
IJ-83B-RL	replaceable liner for IJ-83B-500 and IJ-83Z-211 ••
560934	regulator gauge (included)
560779	regulator (included)
560944	O ring EPDM for bottle style reservoirs included (560944V viton and 560944T Teflon encapsulated viton o ring optional)

## Optional Gauges

Part #	Description
561562	15 psi
560571	25 psi

# Dispensing Pens

Manual Dispensing Pens

Dispensers

## 700PTPCW Dispensing Pinch Tube Pen



Pinch tube pens are ideal applicators for manually dispensing continuous beads or applying microdots of low viscosity liquids. Examples include solvents and cyanoacrylate glues. The disposable pinch tube is the only part of the pen that is in contact with the material and discarded when contaminated. The pinch tube pen can be connected via a wide range of interchangeable fittings to gravity fed or pressurized reservoirs.

### Model

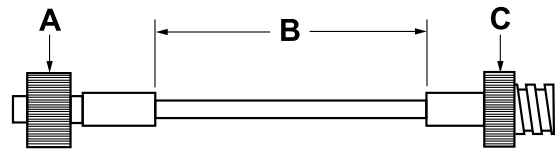
700PTPCW Dispenser Pinch Tube Pen  
Reservoir Ordered Separately

### Parts

Qty	Part #	Description
2	580045A	pinch tube I.D. 0.10"
1	580042A	3/32" allen wrench
1	580044A	1/16" allen wrench
1	580047A	PE hose assembly I.D. 0.070" x 24" length
1	560064	luer lock tip adapter
5	5601257	teflon lined tips I.D. 0.006" (0.15mm)
5	5601204	blunt end tips 23 gauge I.D. 0.013" (0.33mm)
1	580047A-10-18	PE hose assembly I.D. 0.10" x 18" length
1	580047A-10-24	PE hose assembly I.D. 0.10" x 24" length
1	580047A-10-36	PE hose assembly I.D. 0.10" x 36" length

### Pinch tube assemblies (Polyethylene)

Part #	A Molded end	B Tube Length (+/- 0.250")	C Molded End	Tubing (B)	
				I.D. inch	O.D. inch
580045A	male	3.38"	female	0.100	0.150



## JC1015 Dispensing Needle Valve Pen



The needle valve pen simplifies the application of a low to medium viscosity fluid, which is not affected by contact with metal parts. Material is fed into the pen from a cartridge or reservoir. The finger control shut off instantly opens and closes the material flow. The pen is suitable for microdots, beading and potting operations.

### Models

JC1015 Dispensing pen  
Reservoir Ordered Separately

### Replacement parts

Part #	Description	Part #	Description	Part #	Description
561591	screw	561596	needle	561601	machined reducer
561592	knurled fitting	561597	packing O-ring	561602	seat
561593	spring	561598	packing washer	561603	tip holder
561594	piston	561599	machined stop	561852	lever
561595	locking nut	561600	flat washer		

1 (866) 6 FISNAR

# Manual Dispensing Access.

Gravity Dispenser - Pail Pump - Finger Switch

## Gravity Fed Stand & Bottle



Several low viscosity fluids may be gravity fed via a pinch tube pen or dispensing wand. The 560670 stand supports the 560666 bottle for gravity dispensing.

### Models

560670	gravity bottle stand
560666	bottle 500ml
700PTPCW	dispenser pinch tube pen

## Adjustable Finger Switches

For operators who prefer finger switches to foot pedals, these band switches are easily adjustable and can be fitted to cartridges, retainers and barrels.

### Models

FS-501V	cartridge & retainer finger switch
560023-LF	barrel finger switch



## 560092B Manual Pail Pump



Trying to extract material from large pails can be a daunting project. The pail pump is a simple solution. Suitable only for 5-gallon straight-walled pails containing fluids, such as grease, paste, etc. The hand lever pumps the fluid to bottom-fill 2.5, 6, 8 or 12oz cartridges together with luer lock barrels from 3cc up to 55cc.

An internal follower-plate ensures that most material is used.

### Model

560092B	pail pump extruder
---------	--------------------



# Volumetric Hand Dispensers

Manual Hand Dispensing Guns

Dispensers

## JD927 Dosing Gun



A lightweight and comfortable dispensing gun

An effortless squeeze of the trigger advances the plunger by 0.24" (6mm) dispensing an exact amount of material every time.

### Features

Easy twist-on barrel mounting

Accurate liquid volume control

Finger tip control

Push button release of plunger

Compact and impact resistant

Plungers for 30cc and 10cc barrels

### Models

JD927

dosing-gun kit for 30cc barrel

JD927-10

dosing-gun kit for 10cc barrel

## AD93 Volumetric Hand Dispenser



The AD93 volumetrically dispenses epoxies, silicones, glues and pastes. Available in two capacities, 35cc and 80cc syringe, with hot stamped sidewall indicators for dosage levels in cc and ounces. Shot sizes can be selected in increments of 1cc to 5cc. Material delivery is via luer lock tips.

### Models

AD93 35cc capacity

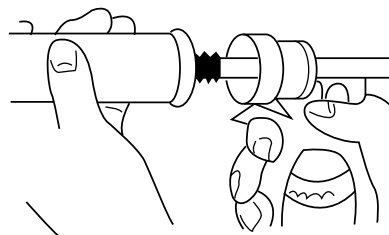
AD93L 80cc capacity

### Parts (included)

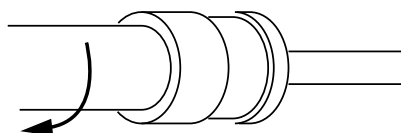
560789 barrel w/plunger 35cc

560798 barrel w/plunger 80cc

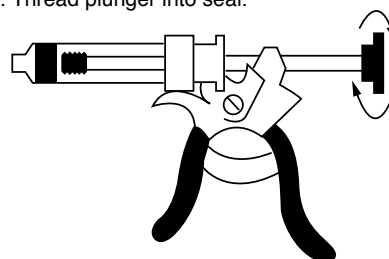
1. Insert barrel.



2. Twist to lock in place.



3. Thread plunger into seal.



# Dispensing Stands

## Benchtop Dispensing Stands

Dispensing stands are designed to operate as bench workstations.

A heavy-duty cast base is provided for precise alignment and positioning of barrels, valves, cartridges and retainers. An adjustable horizontal arm allows for z-axis adjustment.

### Barrel & 710PT-LF Stand



#### Model

560021 Barrel & 710PT-LF valve stand

### MV-0180LF Stand



#### Model

560536 MV-0180LF mini-valve stand

### LV-0126RJ Stand



#### Model

561115 LV-0126RJ valve stand

### 1/10th Gallon Stand



#### Model

560549 1/10th gal. stand

### 790HP Stand



#### Model

560671 790HP valve stand  
560671NM 790HPNM valve stand

### Combination Cartridge Reservoir & MV-0180LF Stand



#### Model

560568 Cartridge reservoir & MV-0180NM-A stand

### Retainer Reservoir Stand



#### Model

560535 cartridge reservoir stand

### VMP30H & VDP150 Stand



#### Model

562235 VDP150 & VMP30H valve stand

### VD510 Stand



#### Model

562043 VD510 valve stand

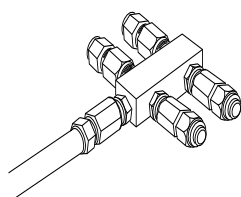
# Accessories & Fittings

Manual Hand Dispensing Guns

Dispensers

## Liquid Manifolds

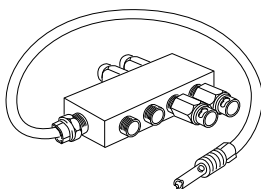
Provides capability of supplying liquid from one reservoir to up to (6) valves. Suitable for 3/8" or 1/4" tubing.



Part #	Description	No. of Outputs
560540	liquid manifold (3/8" tubing)	2
560542	liquid manifold (3/8" tubing)	4
560543	liquid manifold (3/8" tubing)	6
560540-1/4	liquid manifold (1/4" tubing)	2
560542-1/4	liquid manifold (1/4" tubing)	4
560543-1/4	liquid manifold (1/4" tubing)	6

## Air Manifolds

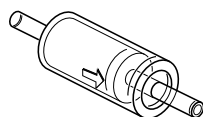
Provides the capacity of connecting up to (8) valves to one dispensers.



Part #	Description	No. of Outputs
560055	air manifold	2
560057	air manifold	4
560539	air manifold	8

## Cleanroom Filter / Muffler

Filter cartridge filters air output to 0.5 microns. Also provides muffling of exhaust air where reduced operating noise is required.



Part #	Description
560024	filter / muffler

## 5 Micron Air Filter

Part #	Description
580101	air filter
560567	5 micron air filter / regulator

## Fittings

Brass  <b>2067</b> Female Quick Connector, 1/4" Barb	Brass  <b>2067A</b> Female Quick Connector, 1/4" NPT Female	Brass  <b>2081</b> Male Quick Connect 1/8" Barb	Brass  <b>580108</b> Male Quick Connect 1/4" MPT Male	Stainless steel  <b>560738</b> Hose Clamp	Brass  <b>580109A</b> Adapter nipple metric, 1/4" MPT
Brass  <b>560737</b> Barbed fitting male, 1/4" MPT 1/4" barb	Brass  <b>560614</b> Reducing Nipple, 1/4" MPT 1/4" MPT	Brass 	White  <b>561085</b> Female Luer Lock to Barb	White  <b>561086</b> Luer Lock to Hose Barb	Black  <b>580057</b> Quick Disconnect Retainer - Female with shut-off
White  <b>580095</b> Quick Connect Retainer - Female w/o shut-off	Black  <b>580115</b> Quick Connect Retainer - Female bulkhead	Black  <b>2004BA</b> Male Luer Lock Tip Adapter	Black  <b>560519</b> Male Luer Lock Cartridge Adapter	White  <b>560657</b> Female Connector, 1/4" NPT, 1/4" Tube	White  <b>913</b> Male Connector, 1/4" NPT, 3/8" Tube
White  <b>914</b> Male Elbow, 1/4" MPT, 3/8" Tube	White  <b>560726</b> Female Connector 1/4" NPT, 3/8" Tube	White  <b>560545</b> Male Luer Lock Tip Adapter	White 	Nylon  <b>7513</b> Reduced Nipple, 1/4" NPT, 1/4" - 28 UNF	White 
White  <b>560714</b> Male Elbow, 1/4" MPT, 1/4" Tube	White  <b>560715</b> Male Connector 1/4" MPT, 1/4" Tube	Brass  <b>560724</b> Male Elbow, 1/4" NPT, 1/4" NPT	Brass  <b>560725</b> Male swivel elbow, 1/4" NPT, 1/4" Tube	Brass  <b>560701</b> Barbed Fitting, female 1/4" NPT, 3/16" barb	Brass  <b>560703</b> Male Quick Connector, 1/4" NPT female
Brass  <b>560704</b> Barbed Fitting, male 1/4" MPT, 3/16" barb	Brass  <b>560716</b> Close Nipple 1/4" NPT	Brass  <b>560727</b> Reducer 1/4" NPT female, 1/8" NPT male	Brass  <b>560735</b> Reducer coupling 3/8" NPT, 1/4" NPT	Brass  <b>560740</b> Elbow connector 3/8" NPT, 1/2" Comp	Brass  <b>560741</b> Reducing Nipple 3/8" MPT, 1/4" MPT
Brass  <b>560717</b> Reducing bushing 1/2" - 1/4" NPT	Brass  <b>560718</b> Hex Nipple, 1/8" NPT	Brass  <b>560719</b> Reducing bushing 1/4" - 1/8" NPT	Brass  <b>560713</b> Male Fitting Elbow 1/4" NPT, 3/16" Hose	Brass  <b>560746A</b> Male push connector 1/4" MPT, 1/4" Tube	Brass  <b>560747</b> Street Elbow 1/4" NPT
Brass  <b>560728</b> Elbow, 1/8" NPT Female, 3/16" Barb	Brass  <b>560729</b> Elbow, 1/8" NPT Female, 1/8" NPT Male	Brass  <b>560730</b> Tee 1/2" NPT, 3/16" tube, 3/16" tube	Brass  <b>560731</b> Tee 3/16" tube, 3/16" tube, 1/8" NPT	Brass  <b>560732</b> Elbow 1/8" NPT male 3/16" tube	White  <b>560733</b> Luer lock connector 1/4" - 28 UNF
Nylon  <b>560734</b> Reducer 1/4" NPT, 1/4" - 28 UNF	Nylon  <b>560745</b> Female coupling Luer Lock	White  <b>560546</b> 1/10 Gal. nozzle adapter			



**adhere**<sup>TM</sup>

better bonding from intertronics

Unit 17 Station Field Industrial Estate  
KIDLINGTON

Oxfordshire, OX5 1JD, ENGLAND

t 01865 842842 · e [info@intertronics.co.uk](mailto:info@intertronics.co.uk)

[www.intertronics.co.uk](http://www.intertronics.co.uk)

