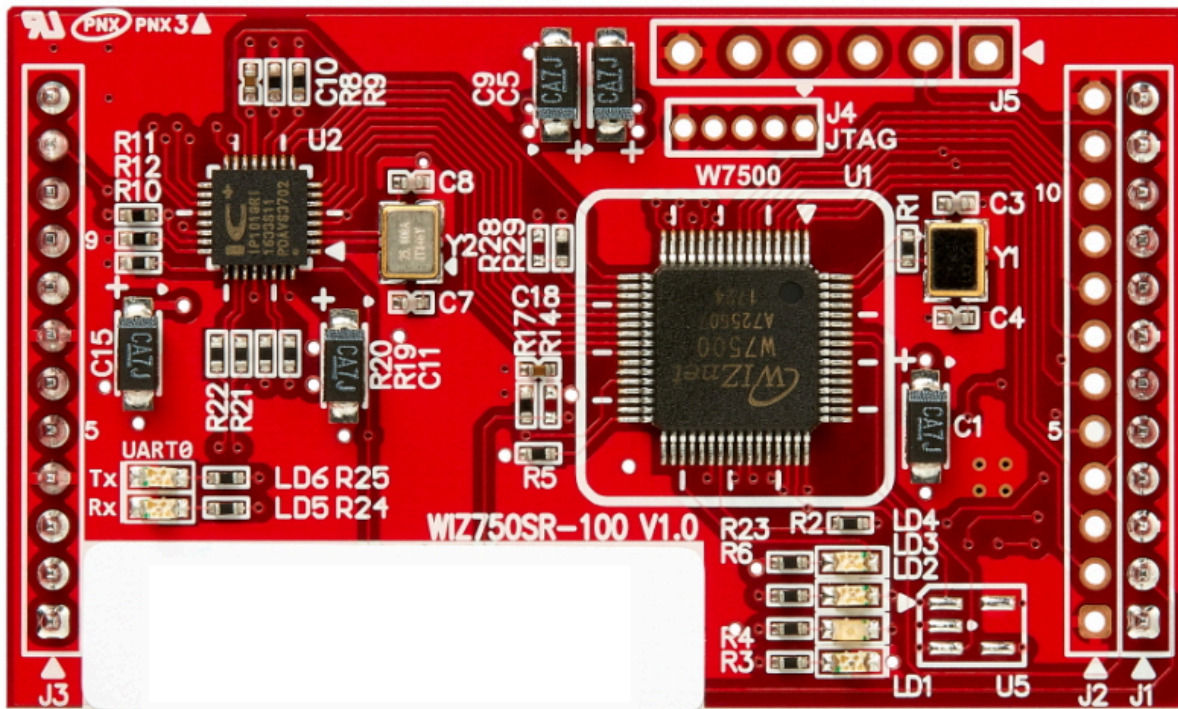


# WIZ750SR-1xx Series

WIZ750SR-1xx Series is 1-port serial to Ethernet converting module using the W7500 Ethernet MCU (SoC based on ARM Cortex-M0 architecture) with External PHY(IC+).

## WIZ750SR-100



## Features

- Without RJ45 and D'sub-9 connector
- 2ea 1x12 2mm pitch pin header type
  - 1ea MDI Interface
  - 1ea Data UART Interface(3.3V)
- Dimensions : 50.00(W) x 30.00(L) x 12.00(H) (Unit : mm)