

## 2500W 1U Industrial Power Supplies

<https://product.tdk.com/en/power/rfe>  
[www.emea.lambda.tdk.com/uk/products/rfe](http://www.emea.lambda.tdk.com/uk/products/rfe)



Industrial



COTS



Test



COMM



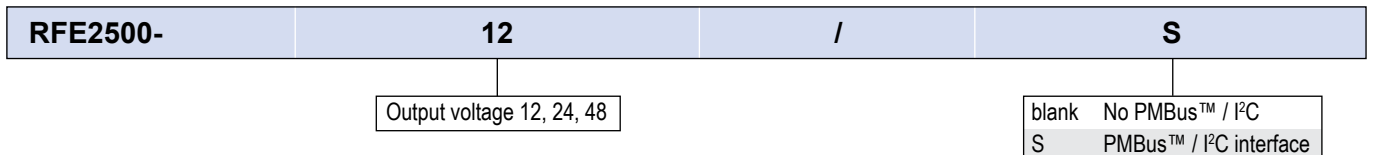
Broadcast



The RFE2500 AC-DC industrial power supplies are high efficiency and 1U in height. They have internal ORing MOSFETs and current share for parallel operation. Communication is possible with the power supplies using the optional isolated PMBus™ (I<sup>2</sup>C) interface. AC fail, DC good, remote output adjust, remote on/off and a 12V auxiliary output are fitted as standard.

Features	Benefits
• Internal ORing FETs and Current Share	• Suitable For N+1 Redundancy
• Up to 2500W in 1U Height	• Utilizes Less System Space
• Full Array of Signals Available	• Easy Remote Monitoring
• PMBus™ (I <sup>2</sup> C) and LAN options	• Industry Standard Communication Interfaces
• Analog Output Adjustment	• Simple External Resistance or Voltage Connection

Model Selector						
Model	Output Voltage (V)	Adjustment Range (V) <sup>(1)</sup>	Max Current (A) (V <sub>in</sub> >180Vac) <sup>(2)</sup>	Max Power (W) (V <sub>in</sub> >180Vac) <sup>(2)</sup>	Max Current (A) (100<V <sub>in</sub> <170Vac) <sup>(2)</sup>	Max Power (W) (100<V <sub>in</sub> <170Vac) <sup>(2)</sup>
RFE2500-12	12	9.6 - 13.2	200	2400	125	1500
RFE2500-24	24	19.2 - 29	96	2304	62.5	1500
RFE2500-48	48	38.4 - 58	52	2496	31.25	1500



Specifications				
Model		RFE2500-12	RFE2500-24	RFE2500-48
<b>Input</b>				
Input Voltage Range	Vac	85 - 265Vac. See model selector for power derating(2)		
Input Frequency	Hz	47 - 63		
Input Current (Max) (110/230Vac)	A	15 / 12		
Inrush Current	A	<50		
Leakage Current	mA	Less than 0.8 / 1.6mA at 115/230Vac, 60Hz		
Power Factor Correction	-	Meets EN61000-3-2, PF >0.98 at full load		
Harmonic Compliance	-	Meets IEC61000-3-2		
Hold Up Time	ms	>10ms, 100/230Vac Input, 80% loading		
Efficiency	%	90 / 92	90 / 92	91 / 93
Conducted EMI	-	Built to meet EN55032 Class B, FCC part 15 Class-B, VCCI Class-B		
Radiated EMI	-	Built to meet EN55032 Class A, FCC part 15 Class-A, VCCI Class-A		
Immunity	-	See immunity section		
Safety Agency Certifications	-	IEC/UL/CSA/EN62368-1, 60950-1, CE Mark		

Immunity				
Test	Standard	Test Level	Criteria	Notes
ESD	EN61000-4-2	2,3	B	-
Radiated Susceptibility	EN61000-4-3	2	A	-
Electrical Fast Transient Burst	EN61000-4-4	2	B	-
Surge	EN61000-4-5	3,4	B	-
Conducted Susceptibility	EN61000-4-6	2	A	-
Magnetic Fields	EN61000-4-8	4	A	-
Voltage Dips / Interruptions	EN61000-4-11	>95% for 0.5 cycles	B	-
		30% for 25/30 cycles	C	-
		>95% for 250/300 cycles	C	-

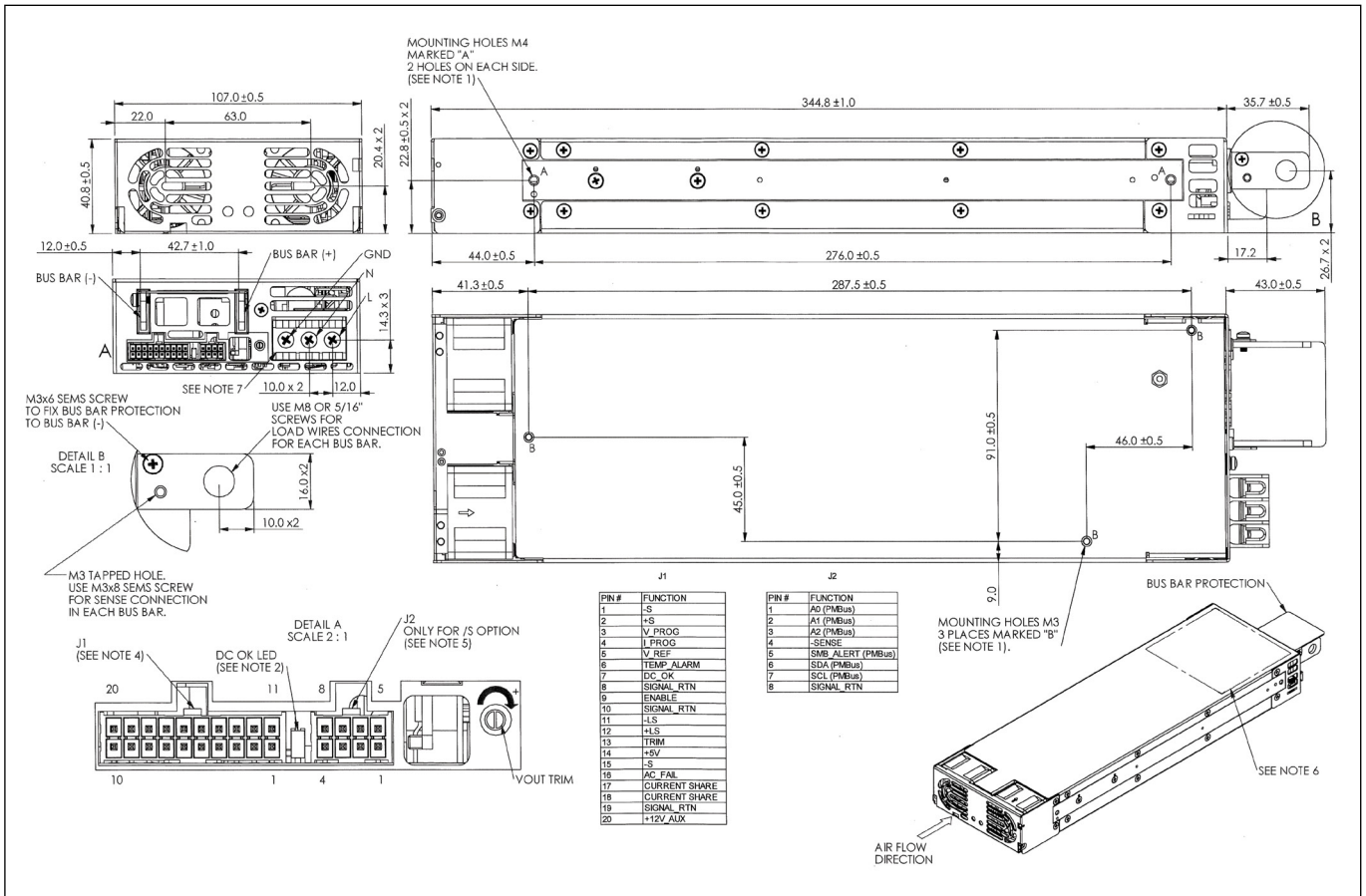
Specifications				
Model		RFE2500-12	RFE2500-24	RFE2500-48
<b>Output</b>				
Line Regulation	mV	30	60	120
Load Regulation	mV	60	120	240
External Load Capacitance	uF/A	1000		
Ripple & Noise	mV	240	240	480
Temperature Coefficient	%/°C	<0.02		
Minimum Load	-	No minimum load required		
Overcurrent Protection	%	115Vac:>110%; 230Vac: 105 - 120%		
Overvoltage Protection (1)	%	110% (Tracking). Cycle AC to reset or utilize Remote On/Off		
Overtemperature Protection	-	Shutdown with automatic reset. Warning signal provided (1)		
Remote Sense Compensation	V/wire	0.25	0.5	1.0
Remote On/Off	-	Yes, inhibit & enable		
AC Fail Signal	-	Open Collector, ON when AC is within 85-270Vac		
DC Good Signal	-	Open Collector, ON when output is above 85 to 95% of setpoint (tracking)		
Communication	-	Optional isolated PMBus™ (I <sup>2</sup> C) interface ( /S suffix) or plug-in LAN module. See model selectors		
Auxiliary Output	-	11.2 - 12.5V, 0.5A, 240mV ripple and noise		
Indicators	-	AC OK: Green LED, DC OK / Fail: Green / Red LED		
Parallel Operation	-	Yes, single wire current share, 5% accuracy of max current, up to 8 units		
Series Operation (1)	-	Two units maximum (external diodes required)		

Specifications		RFE2500-12	RFE2500-24	RFE2500-48
<b>Environmental</b>				
Operating Temperature	°C	-10 to +50: 100% load; +50 to +60 derate: 2%/°C of load; +60 to +70 derate: 2.5%/°C of load. For models with reverse air contact factory.		
Storage Temperature	°C	-30 to +85		
Humidity (non condensing)	%RH	Operating: 10 - 90, Storage: 10 - 95		
Cooling	-	Internal variable speed fans. Airflow enters from the front. Contact factory for reverse airflow option.		
Altitude	m	3000 max. Derate output current 2%/100m above 2000m.		
Withstand Voltage (For 1 minute)	-	Input to Output 3kVac, Input to Ground 2kVac, Output to Ground:		
		500Vac	500Vac	2250Vdc (POE)
Isolation Resistance	MΩ	>100 at 25°C, 70%RH & Output to Ground 500Vdc		
Vibration (Non-operating)	-	Meets IEC61068-2-64 (Basic Transportation)		
Shock (Non-operating)	-	Meets IEC61068-2-27 (Basic Transportation)		
<b>Other</b>				
Weight (Typ)	g	2,500		
Size (LxWxH)	mm	345 x 107 x 41		
Size (LxWxH)	Inches	13.6 x 4.21 x 1.61		
PMBus™ / I²C Interface (1)	-	Isolated from output, Add suffix /S, PMBus™ compatible		
MTBF - Telcordia	Hours	208,356		
Warranty	Years	3		

**Notes**

- (1) See website for detailed specifications, test methods and installation manual
- (2) Derate 1.3%/Vac from 100Vac to 85Vac input

## Outline Drawing RFE2500





### TDK-Lambda France SAS

Tel: +33 1 60 12 71 65  
france@fr.tdk-lambda.com  
www.emea.lambda.tdk.com/fr



### Italy Sales Office

Tel: +39 02 61 29 38 63  
info.italia@it.tdk-lambda.com  
www.emea.lambda.tdk.com/it



### Netherlands

info@nl.tdk-lambda.com  
www.emea.lambda.tdk.com/nl



### TDK-Lambda Germany GmbH

Tel: +49 7841 666 0  
info.germany@de.tdk-lambda.com  
www.emea.lambda.tdk.com/de



### Austria Sales Office

Tel: +43 2256 655 84  
info@at.tdk-lambda.com  
www.emea.lambda.tdk.com/at



### Switzerland Sales Office

Tel: +41 44 850 53 53  
info@ch.tdk-lambda.com  
www.emea.lambda.tdk.com/ch



### Nordic Sales Office

Tel: +45 8853 8086  
info@dk.tdk-lambda.com  
www.emea.lambda.tdk.com/dk



### TDK-Lambda UK Ltd.

Tel: +44 (0) 12 71 85 66 66  
info@uk.tdk-lambda.com  
www.emea.lambda.tdk.com/uk



### TDK-Lambda Ltd.

Tel: +9 723 902 4333  
info@tdk-lambda.co.il  
www.emea.lambda.tdk.com/il



### C.I.S.

#### Commercial Support:

Tel: +7 (495) 665 2627

#### Technical Support:

Tel: +7 (812) 658 0463

info@tdk-lambda.ru

www.emea.lambda.tdk.com/ru



### TDK-Lambda Americas

Tel: +1 800-LAMBDA-4 or 1-800-526-2324  
powersolutions@us.tdk-lambda.com  
www.us.lambda.tdk.com



### TDK Electronics do Brasil Ltda

Tel: +55 11 3289-9599  
sales.br@tdk-electronics.tdk.com  
www.tdk-electronics.tdk.com/en



### TDK-Lambda Corporation

Tel: +81-3-6778-1113  
www.jp.lambda.tdk.com



### TDK-Lambda (China) Electronics Co. Ltd.

Tel: +86 21 6485-0777  
powersolutions@cn.tdk-lambda.com  
www.lambda.tdk.com.cn



### TDK-Lambda Singapore Pte Ltd.

Tel: +65 6251 7211  
tis.mkt@sg.tdk-lambda.com  
www.sg.lambda.tdk.com



### TDK India Private Limited, Power Supply Division

Tel: +91 80 4039-0660  
mathew.philip@in.tdk-lambda.com  
www.sg.lambda.tdk.com

