

Han Guiding PE module, male

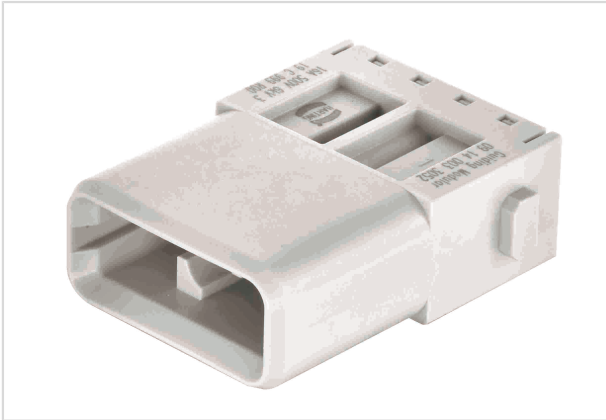


Image is for illustration purposes only. Please refer to product description.

| | |
|--------------------|---|
| Part number | 09 14 003 3052 |
| Specification | Han Guiding PE module, male |
| HARTING eCatalogue | https://b2b.harting.com/09140033052 |

Identification

| | |
|---------------------------|---------------------|
| Category | Modules |
| Series | Han-Modular® |
| Type of module | Han® Guiding module |
| Description of the module | PE module |

Version

| | |
|--------------------|--|
| Termination method | Crimp termination |
| Gender | Male |
| Number of contacts | 2 |
| PE contact | Yes |
| Details | Please order crimp contacts separately. Not for Han-Modular® hinged frames! |

Technical characteristics

| | |
|-------------------------|----------------------------|
| Conductor cross-section | 0.14 ... 4 mm ² |
| Rated current | 16 A |
| Rated voltage | 500 V |
| Rated impulse voltage | 6 kV |
| Pollution degree | 3 |
| Insulation resistance | >10 ¹⁰ Ω |
| Limiting temperature | -40 ... +125 °C |
| Mating cycles | ≥500 |



Pushing Performance

Technical characteristics

| | |
|---------------|-------|
| Lock-in range | ±4 mm |
|---------------|-------|

Material properties

| | |
|---|------------------------|
| Material (insert) | Polycarbonate (PC) |
| Colour (insert) | RAL 7032 (pebble grey) |
| Material flammability class acc. to UL 94 | V-0 |
| RoHS | compliant |
| ELV status | compliant |
| China RoHS | e |
| REACH Annex XVII substances | No |
| REACH ANNEX XIV substances | No |
| REACH SVHC substances | No |

Specifications and approvals

| | |
|----------------|-------------------------|
| Specifications | EN 60664-1 IEC 61984 |
|----------------|-------------------------|

Commercial data

| | |
|--------------------------------|---|
| Packaging size | 2 |
| Net weight | 14 g |
| Country of origin | China |
| European customs tariff number | 85389099 |
| eCl@ss | 90909090 Interim classification (unspecified) |