

5

4

3

2

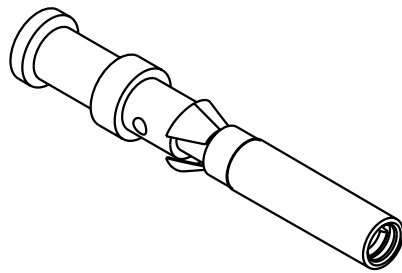
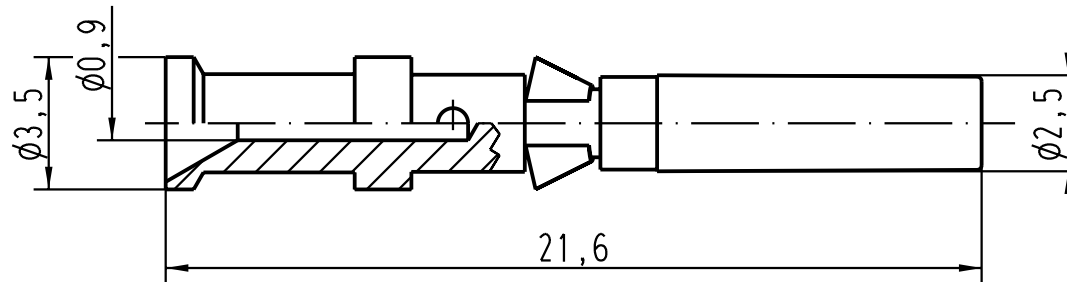
1

D



C

B

A



Leiterquerschnitt/ wire gauge: 0,14-0,37mm<sup>2</sup>/ AWG 26-22

 All Dimensions in mm Original Size DIN A 4		Techn. Character.			Nicht tolerierte Masse/ Free size tolerances		
			Dat.	Name	Massstab/ Scale <b>5:1</b>	<b>R15-Kontaktbuchse</b> Crimpkontakt Fe) vergoldet/ crimp contact (Fe) gold plated	
			Detail.	24.09.03			Loe.
			Insp.				KR
			Stand.				
410702			HARTING Electric GmbH & Co. KG			<b>TB 09 15 000 6271</b>	
Mod.	Dat.	Name	D-32339 Espelkamp				Blatt/ page
						Sub.	