

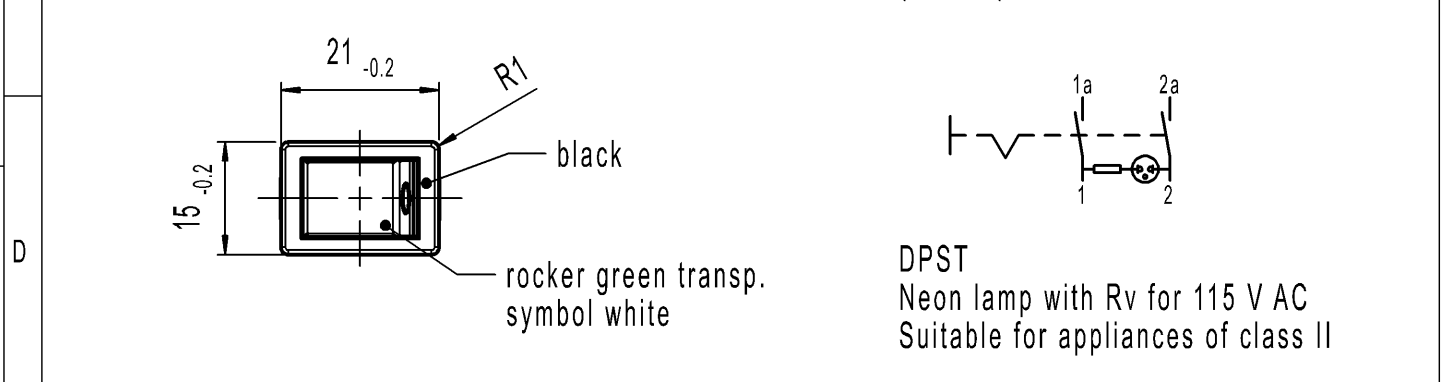
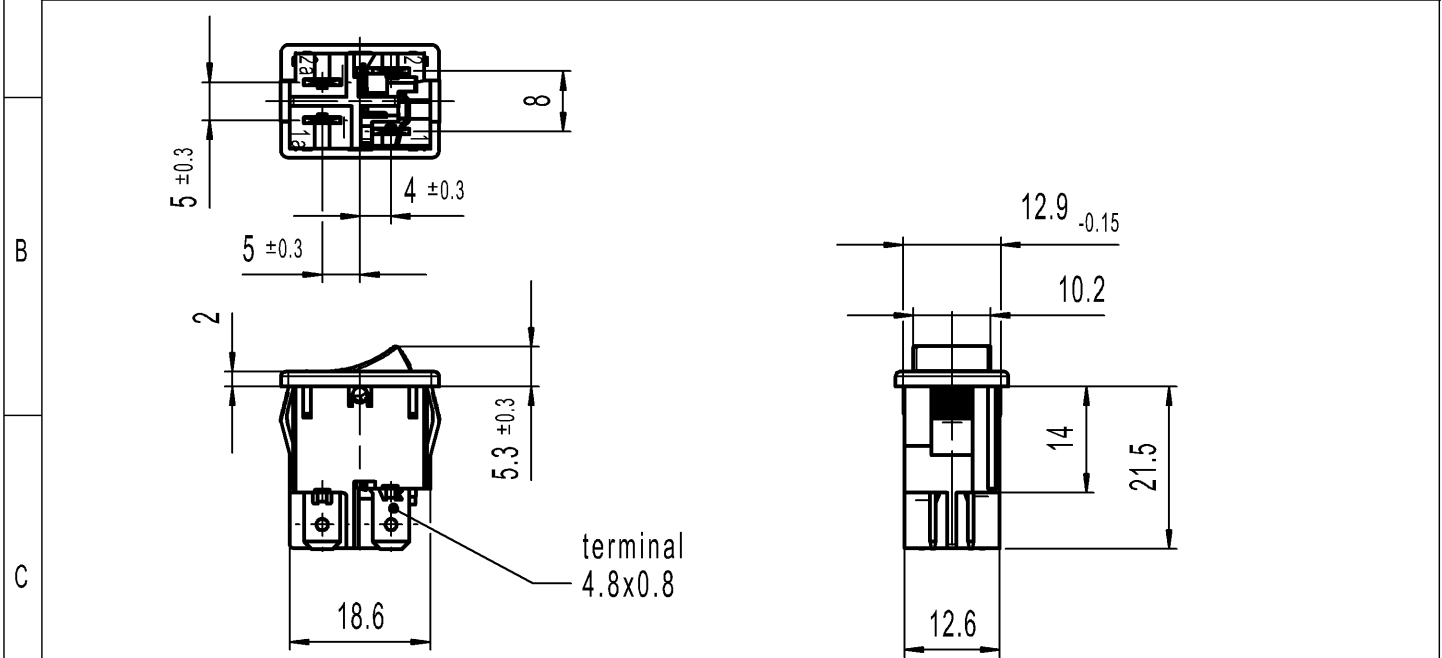
THIS DRAWING IS THE EXCLUSIVE PROPERTY OF MARQUARDT. WITHOUT THEIR CONSENT IT MAY NOT BE REPRODUCED OR GIVEN TO THIRD PARTIES.


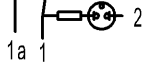
CONFIDENTIAL

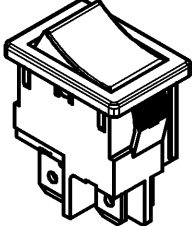
VERTRAULICH

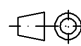

Alle Rechte bei Marquardt, auch fuer den Fall von Schutzrechtsanmeldungen. Jede Veruegungsbefugnis, wie Kopier- und Weitergaberecht, bei uns.

A	recommended cut-out for snap-in fixing (edge opposite to snap-in direction)	1	2	3	4
			wall thickness	length of cut-out	width of cut-out
			0.75 to 1.25	19.2 -0.1	12.9+0.1
			1.25 to 2	19.4 -0.1	12.9+0.1
		2 to 3	19.8 -0.1	12.9+0.1	



Marking
 (M)
 1855.
 6A 125V AC
 1/10 HP
 R53 

 Code of manufacture: place/year/month



-	-	-	1855.1122-XX
Figure	Type	Customer Part No.	Art.No.-PI
Shape and location	Angle ± 2 °	Sheet 01	Ident. K
	Edge tolerance	Format DIN A4	Document number 18551122
	Length	Projection 	Index f
	Radii	Scale 1:1	Appliance Switch
		All dimensions are in millimetres	
f	141197	2023-01-07	 MARQUARDT
e	66876	2010-01-20	
d	63303	2009-05-07	
c	23451	1995-07-05	
Index	MEC-No.	Date (YYYY-MM-DD)	
			System NX V1899
			Replacement of
			Zg.gl.Nr.v.29.06.1993