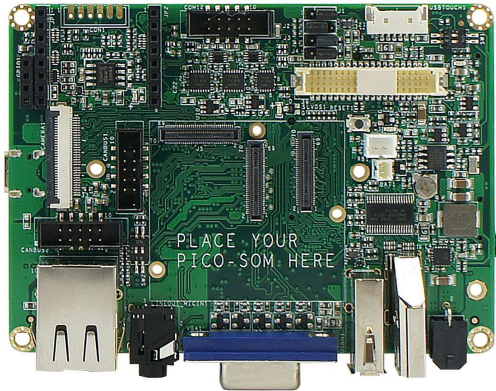


PICO-NYMYPH



Main Features

- The PICO-NYMYPH reference design is compatible with Intel Edison and TechNexion Pico modules and add a variety of sensors and connectivity to the Pico module making it the ideal candidate for IoT (Internet of Things) applications such as drones, wearables, appliances and robotics.
- Schematics, design files, board files and BOM lists of PICO-NYMYPH are available and can be downloaded from the TechNexion homepage.

EDISON

Power	SDIO	I ² S	SPI	PWM
	USB OTG	UART	I ² C	GPIO

EXP-A

LVDS	RMII RGMII
TTL → VGA	

EXP-B

CAN	PCIe	HDMI	SATA
I ² C	USB HOST	MIPI	

Specifications

Core System

System-on-Module Compatible with TechNexion Pico Connectors (3x 70-pin Hirose Connector)

Connectivity

Network Micrel KSZ8084RNB Fast Ethernet LAN
Atheros AR8035 Gigabit LAN

Connector RJ-45 LAN Connector

Expansion

Expansion slots M.2 slot
mini PCIe + SIM cardslot

Storage micro SD cardslot

USB USB 2.0 Host Connector
USB OTG Type C Connector

Expansion Headers CAN
RS232
USB

Mikrobus

GPIO
UART
SPI
I²C
PWM
ADC

Video

External Display VGA Connector
HDMI Connector

Internal Display Single Channel LVDS
MIPI DSI Display on 33-pin FPC Connector
MIPI CSI signals on 33-pin FPC Connector

Audio

Audio Codec NXP SGTL5000

Audio Connectors CTIA compliant 3.5 mm audio jack

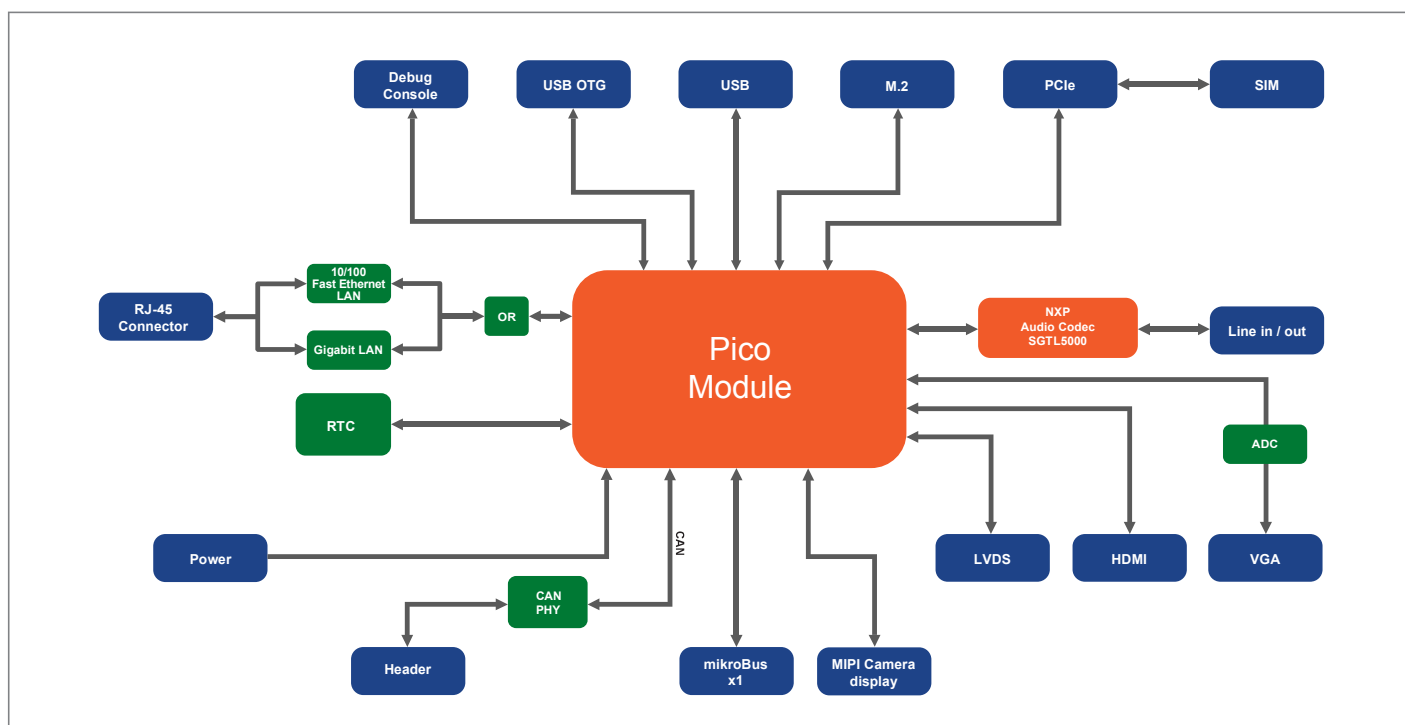
Power Specifications

Input Power 12V DC +/- 5%

Power Connector Microfit Connector

RTC Maxim integrated DS1337+

Block Diagram

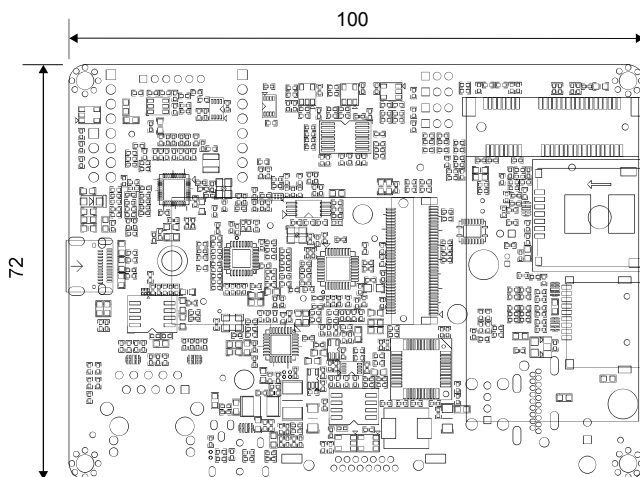
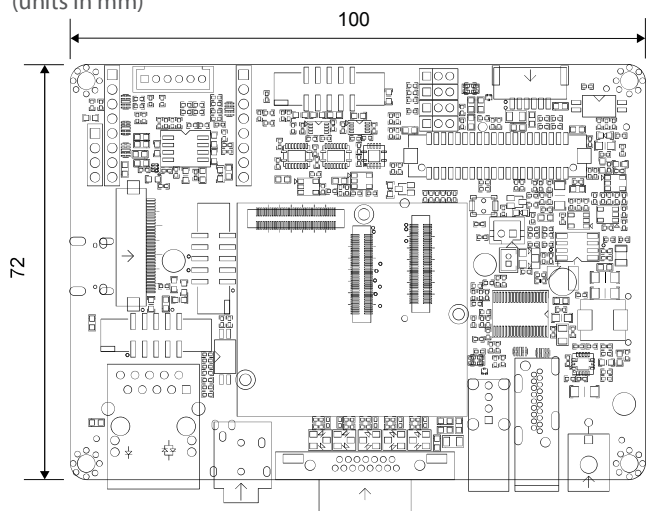


Environmental and Mechanical

Temperature	Commercial : 0° to 60° C
Humidity	10 to 90%
Dimensions	100 x 72 mm
	3 ¹⁵ / ₁₆ x 2 ⁵³ / ₆₄ inch
MTBF	>100,000 hours
Weight	65 grams
Shock	50G/25ms
Vibration	20G/0-600 Hz

Dimensions

(units in mm)



Ordering Information

PICONYMPHFL

PICO NYMPH CARRIER BOARD WITH FAST ETHERNET LAN

PICONYMPHGL

PICO NYMPH CARRIER BOARD WITH GIGABIT LAN

* Feel free to contact us for custom tailored Carrier Board request for your projects.