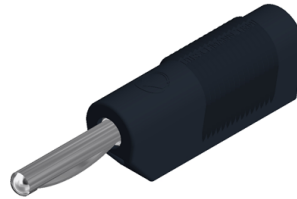
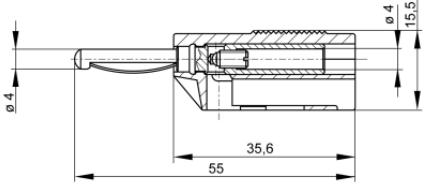


Plugs

VSB 20



Product	VSB 20
description	Fully mating connector with cable gland and 4 mm socket for onward connection capability. Screw connection up to maximum cable cross-section of 2.5 mm ² and external diameter of 4 mm. Nickel-plated brass contact material.
operating instruction	BA411
article-no. / *colour	9304351xx <div style="display: flex; justify-content: space-around; align-items: center;"> <div style="text-align: center;">● 00 black</div> <div style="text-align: center;">● 01 red</div> <div style="text-align: center;">● 02 blue</div> <div style="text-align: center;">● 03 yellow</div> <div style="text-align: center;">● 04 green</div> </div> <div style="text-align: right; border: 1px solid black; padding: 2px; margin-top: 5px;">Ni</div>
drawing	
	
technical data	
connection	screw terminal
rated voltage ⁽¹⁾	30 VAC / 60 VDC
measurement cat. acc. to IEC 61010	O ⁽³⁾
rated current ⁽¹⁾ (consider derating curve)	30 A
material plug	brass, nickel plated
housing material	PP
temperature range acc. To IEC61010 ⁽²⁾	-25 °C to +70 °C
flammability class acc. to UL 94 (only valid for basic material of housing)	HB
standard	IEC 61010

⁽¹⁾ for normal environmental conditions -5°C to +40°C

⁽²⁾ contact the manufacturer for applications at deviating temperature ranges

⁽³⁾ without rated measurement category, for other circuits that are not directly connected to mains
stand: 07.05.2019