

U.I. Lapp GmbH	<b>DATASHEET</b>	
	<b>EPIC® H-A 4</b>	<b>10432000</b> <b>12.09.2012</b>

H-A inserts with screw termination up to 2.5 mm<sup>2</sup> wire cross section  
H-A inserts with screw termination up to 2.5 mm<sup>2</sup> wire cross section  
The small H-A 4s are used wherever space is at a minimum. Screw termination with straight cable insertion from the rear



#### Info

Straight cable entry from the rear

#### Application range

Machine and equipment manufacturing  
Control engineering

#### Remark

Photographs are not to scale and do not represent detailed images of the respective products.

#### Technical Data

Pieces / PU:	10
Contacts:	1 - 4
Version:	female
Article:	H-A 4 BS
Rated voltage (V):	IEC: 400 V UL: 600 V CSA: 600 V
Rated impulse voltage:	4 kV
Rated current (A):	IEC: 23 A UL: 10 A CSA: 10 A
Contact resistance:	1.5 - 4 mohm
Contacts:	Copper alloy, hard silver-plated
Number of contacts:	4 + PE
Termination methods:	Screw termination: 0.5 - 2.5 mm <sup>2</sup> (2.5 mm <sup>2</sup> with conductor end sleeves depending on the crimping profile)
Cycle of mechanical operation:	100
Temperature range:	-40 °C to +100 °C, short-term up to +125 °C
VDE-tested:	Certified production control: VDE-REG. no. 437
Degree of soiling:	3

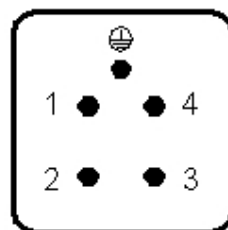


Product Management	Document: EPIC® H-A 4	1 / 2
--------------------	-----------------------	-------

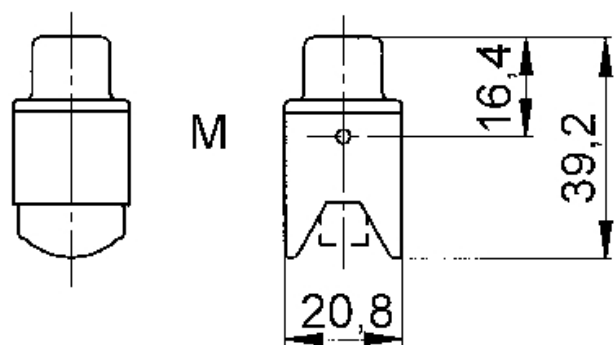
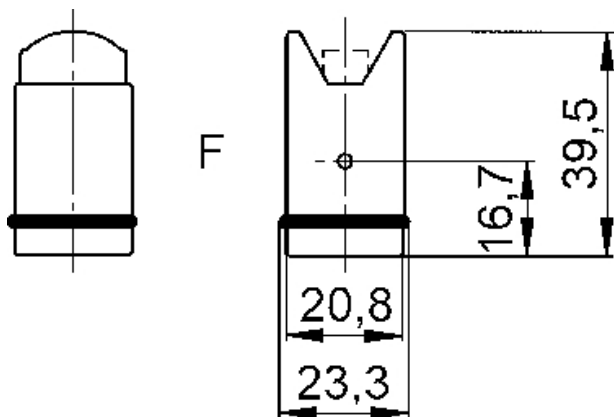
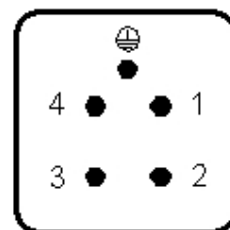
U.I. Lapp GmbH	DATASHEET	 <b>LAPP GROUP</b>
	EPIC® H-A 4	10432000 12.09.2012



M



F



Product Management	Document: EPIC® H-A 4	2 / 2
--------------------	-----------------------	-------