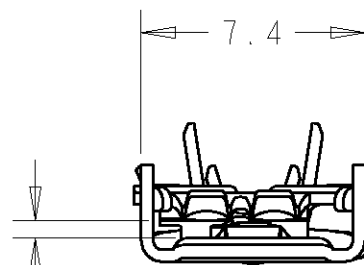
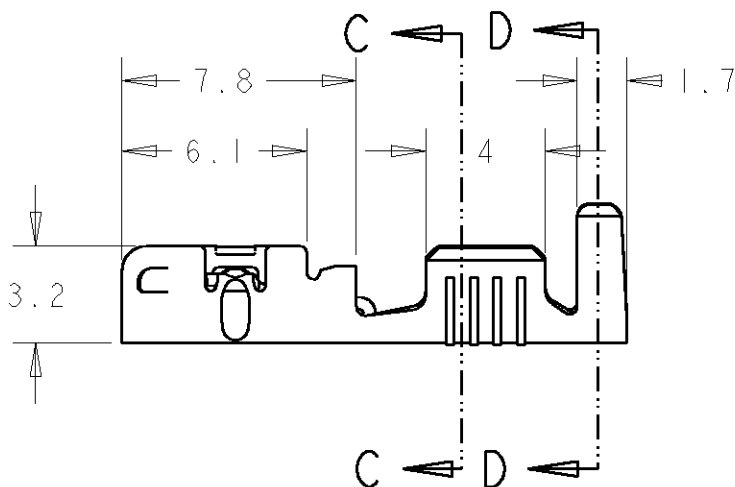
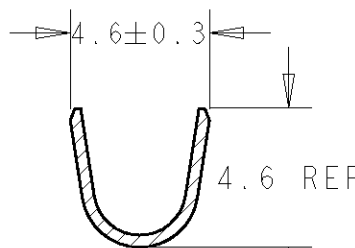
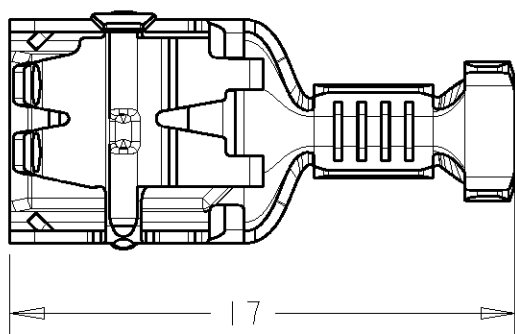


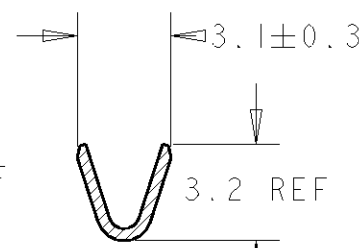
LOC	DIST	REVISIONS			
P	LTR	DESCRIPTION	DATE	DWN	APVD
AL	2				
	F	See ECR 05-017875	JAN 2006	J.S.	J.L.
	G	UPDATED TOLERANCE TABLE	FEB 2006	J.S.	J.L.



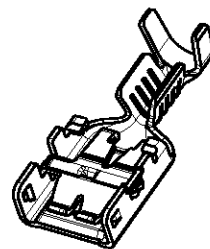
Para lengüeta de 0.8 mm  
For 0.8mm tab thickness



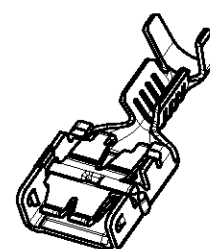
SECTION D-D  
SCALE 4:1



SECTION C-C  
SCALE 4:1



Left-sided product



Right-sided product

Rango de hilo de 0,5 a 1,5 mm<sup>2</sup>  
Wire range from 0.5 to 1.5 mm<sup>2</sup>  
Diámetro de aislante max 3,0 mm  
Max. Insulation Diameter 3.0 mm

336075-6	CuNiSi	Preestañado Pre-Tin
336075-5	Acero Steel	Preniquelado Pre-Ni
336075-3	Latón Brass	Preestañado Pre-Tin
336075-1	Latón Brass	-
Guion Dash	Material	Acabado Finish

RELEASED FOR PUBLICATION 20

THIS DRAWING IS UNPUBLISHED. BY TYCO ELECTRONICS CORPORATION. ALL RIGHTS RESERVED. COPYRIGHT 20

DIMENSIONS: mm		DWN J. Saló 22 Dec 04	MATERIAL Table		FINISH Table	
TOLERANCES UNLESS OTHERWISE SPECIFIED:		CHK L. Lázaro 22 Dec 04	Tyco Electronics AMP España, S.A. Barcelona, Spain.			
0 PLC ±0.5	1 PLC ±0.5	APVD -				
2 PLC ±	3 PLC ±	PRODUCT SPEC 108-22128 Brass 108-22150 Pre-Ni Steel	NAME E-SPRING CONTACT 6,35 Receptáculo 6.35 Receptacle E-SPRING CONTACT			
4 PLC ±	ANGLES ±	APPLICATION SPEC 114-22017	SIZE A4	CAGE CODE 00779	DRAWING NO C=336075	RESTRICTED TO -
		WEIGHT -	CUSTOMER DRAWING		SCALE 4:1	SHEET 1 OF 1
					REV G	