



優潔光科技股份有限公司
UJ Light Technologies Corporation

SPECIFICATIONS FOR LCD MODULE

MODEL NO.
BG320240B1-BNHNW318d\$
VER.01



FOR MESSRS:

ON DATE OF:

APPROVED BY:

UJ Light Technologies Corporation

NO.15, Ln.576, Sec.1, Guangfu Rd., East Dist., Hsinchu City 300047, Taiwan(R.O.C.) Taiwan.

Web Site: <https://www.ujlight.com/> TEL:+886-3-5678366 FAX:+886-3-5678255



History of Version

Version	Contents	Date	Note
01	NEW VERSION	2025/03/14	SPEC.



CONTENTS

1. Numbering System
2. Handling Instruction
3. General Specification
4. Absolute Maximum Rating
5. Electrical Characteristics
6. Optical Characteristics
7. Interface Pin Function
8. Power supply for LCD Module and LCD operating voltage adjustment
9. Backlight information
10. Quality Assurance
11. Reliability
12. Appendix
 - 12-1 Drawing
 - 12-2 Block Diagram
 - 12-3 Timing characteristics
 - 12.4 RAIO 8835 controller
 - 12.5 Touch panel Information



1. Numbering System

B	G	320240	B1	-	B	N	H	N	W	318d	\$	
0	1	2	3		4	5	6	7	8	9	10	11

0	UJ LIGHT	U			
1	Module Type	C	Character type	P	TAB /TCP type
		F	COF type	R	Color STN
		G	Graphic type	L	OLED
		O	COG type	Z	Customize
2	Format	320240	320 × 240 dots		
3	Version No.	A~Z (A1~Z9 AA~ZZ) type (RW1063 IC AW=I2C AR=SPI)			
	-				
4	LCD Color	B	STN / Blue, OLED/Blue	H	HTN
		C	Color	T	TN
		F	FSTN	Y	STN/Yellow-green
		G	STN/Grey	D	OLED/Blue+Yellow
		A	OLED/Blue+Yellow+Green	E	OLED/Yellow
		L	OLED/Green	R	OLED/RED
		W	OLED/White	J	ASTN
		K	DFSTN	V	VA LCD
5	LCD Type	R	Positive/reflective	M	Positive/ transmissive
		P	Positive/transflective	N	Negative/ transmissive
		T	Negative/ transflective		
6	Backlight type/color	L	(LED)Array/yellow-green	G	(LED)Edge/yellow-green
		M	(LED)Array/amber	H	(LED)Edge/white
		R	(LED)Array/red	D	(LED)Edge/blue
		U	(LED)Array/blue	E	(EL)white
		W	(LED)Array/white	B	(EL)blue
		C	(CCFL) white	F	(LED)Array/RGB
		Y	(LED)Array/yellow	N	No backlight
		O	(LED)Array/orange	K	(LED)Edge/green
		A	(LED)Edge/amber	Q	(LED)Edge/red
		J	(LED)Array/green	I	(LED)Edge/RGB
		Z	(LED) array red/green	P	(LED)Edge/orange
		S	(LED)edge/RGBW	T	(LED)edge red/green



		V	Edge / yellow-green	X	(LED) Edge white / red
7	CGRAM Font	J	English/Japanese Font	C	English/Cyrillic Font
		G	Chinese(simple)	H	English/Hebrew Font
		E	English/European Font (ST7066U0B-BB)	S	English/European Font (ST7066U-0E-BB)
		F	Chinese(traditional)	M	Japanese-Kanji
		Z	Z=Chinese(simple)+Chinese (traditional)+Japanese+Korean	K	Korean (only for BG16032A BG24064C)
		A	English/Arabic Font	D	Chinese (simple/traditional) English/Japanese
		B	English/Japanese/European	N	None
8	View Angle /Operation Temperature	B	Bottom/Normal Temperature06:00	W	Top/Wide Temperature 12:00
		H	Bottom/Wide Temperature 06:00	E	Top/Ultra Temperature 12:00
		C	9H/Normal Temperature 09:00	U	Bottom/Ultra wide Temperature 06:00
		T	Top/Normal Temperature 12:00	F	9H/Ultra wide Temperature 09:00
		G	3H/Wide Temperature 3:00	D	9H/Wide Temperature 09:00
		I	3H/ Ultra Wide Temperature 3:00		
9	Special Code	N	Negative voltage for LCD	T	Negative voltage and Temperature compensation for LCD
		P	Touch panel	3/5	3/5 voltage logic power supply
10	RoHS	\$			
11	Customer Code				

2. Handling Instruction

2.1 Precaution in use of LCD Module

- 2.1.1. LCD panel is made of glass. Avoid excessive mechanical shock or applying strong pressure on the surface of display area.
- 2.1.2. The polarizer used on the display surface is easily scratched and damaged. Extreme care should be taken when handling. To clean dust or dirt off the display surface, wipe gently with cotton, or other soft material soaked with isopropyl alcohol, ethyl alcohol, do not use water, ketone or aromatics and never scrub hard.
- 2.1.3. Store the panel or module in a dark place where the temperature is $20^{\circ}\text{C} \pm 5^{\circ}\text{C}$ and the humidity is below 60% RH.
- 2.1.4. Keep LCD panels away from direct sunlight, also avoid them in high-temperature & high humidity environment for a long period.
- 2.1.5. Do not input any signal before power is turned on.
- 2.1.6. Avoid pressing on the metal bezel, otherwise the elastomer connector could be deformed and lose contact, resulting in missing pixels and also cause rainbow on the display.
- 2.1.7. To control temperature and time of soldering is $320 \pm 10^{\circ}\text{C}$ and 3-5 sec.
- 2.1.8. EL manufactured from the organic film, and easily affected by temperature, humidity and other environmental impact. Long-term placement in a place will cause low quality of the case. Therefore, unpack the cartons and start the production with the LCM within three months after the reception of them.

2.2 Static Electricity Precautions:

- 2.2.1. The LCD module contains a C-MOS LSI. People who operate the LCM should wear ESD protection equipment to prevent ESD hurt on products.
- 2.2.2. Do not touch any of the conductive parts such as the LSI pads; the copper leads on the PCB and the interface terminals with any parts of the human body.
- 2.2.3. Do not touch the connection terminals of the display with bare hand; it will cause disconnection or defective insulation of terminals.
- 2.2.4. The modules should be kept in anti-static bags or trays for storage.
- 2.2.5. Only properly grounded soldering irons should be used.
- 2.2.6. If an electric screwdriver is used, it should be grounded and shielded to prevent sparks.
- 2.2.7. The normal static prevention measures should be observed for work clothes and working benches.
- 2.2.8. Since dry air is inductive to static, a relative humidity of 50-60% is recommended.

2.3 Operation Precautions:

- 2.3.1. Since applied DC voltage causes electro-chemical reactions, which deteriorate the display, the applied pulse waveform should be a symmetric waveform such that no DC component remains. Be sure to use the specified operating voltage.
- 2.3.2. Driving voltage should be kept within specified range; excess voltage will shorten display life.
- 2.3.3. An electrochemical reaction due to direct current causes LCD deterioration, Avoid the use of -Response time will be extremely delayed at lower temperature than the operating temperature range and on the other hand at higher temperature LCD's show dark color in them.



2.4 Safety:

- 2.4.1 If the LCD panel breaks, be careful not to get the liquid crystal to touch your skin.
If the liquid crystal touches your skin or clothes, please wash it off immediately by using soap and water.

2.5 WARRANTY POLICY

UJ LIGHT . Will provide one-year warranty for the products only if under specification operating conditions.

If there are functional defects found during the period of warranty, the defective products would be replaced on a one-to-one basis.

UJ LIGHT would not be responsible for any direct/indirect liabilities consequential to any parties.

2.6 MTBF

- 2.6.1 .By specific test condition, MTBF based on 30 °C normal operation temperature is 50,000 hours. Estimator of L(10) is 5,268 hours. Remark: L(10) means accumulative defect rate equals 10% at the time of L(10).

2.6.2 Test Condition:

2.6.2.1 Supply Voltage for LCM: Typical Vdd

2.6.2.2 CC (Constant Current) mode and typical current is applied for LED.

2.6.2.3 Run-Patterns: by UJ LIGHT's test program that has defined patterns and cyclic period.

2.6.2.4 Humidity: 60%RH

2.6.3 Test Criteria:

Loss of brightness at specific measured point: $\leq 50\%$

Loss of brightness at specific measured point: $\leq 20\%$

Display function at room temperature: Normal

Appearance: Normal

3.General Specification

(1) Mechanical Dimension

Item	Standard Value	Unit
Number of dots	320x240	dots
Module dimension (L x W x H)	148.02(W)x 120.24(H)x 17.1max(T)	mm
View area	122.0(W)x 92.00(H)	mm
Active area	115.18(W)x 86.38(H)	mm
Dot size	0.34(W)x 0.34(H)	mm
Dot pitch	0.36(W)x 0.36(H)	mm

(2) Controller IC: RAIO 8835

(3) Temperature Range

	Wide
Operating	-20 ~+70°C
Storage	-30 ~+80°C

4.Absolute Maximum Rating

Item	Symbol	Min	Typ	Max	Unit
Operating Temperature	T _{OP}	-20	—	+70	°C
Storage Temperature	T _{ST}	-30	—	+80	°C
Input Voltage	V _I	-0.3	—	V _{dd}	V
Supply Voltage For Logic	V _{dd} -V _{ss}	-0.3	—	7.0	V
Supply Voltage For LCD	V _{dd} -V _o	0	—	28	V



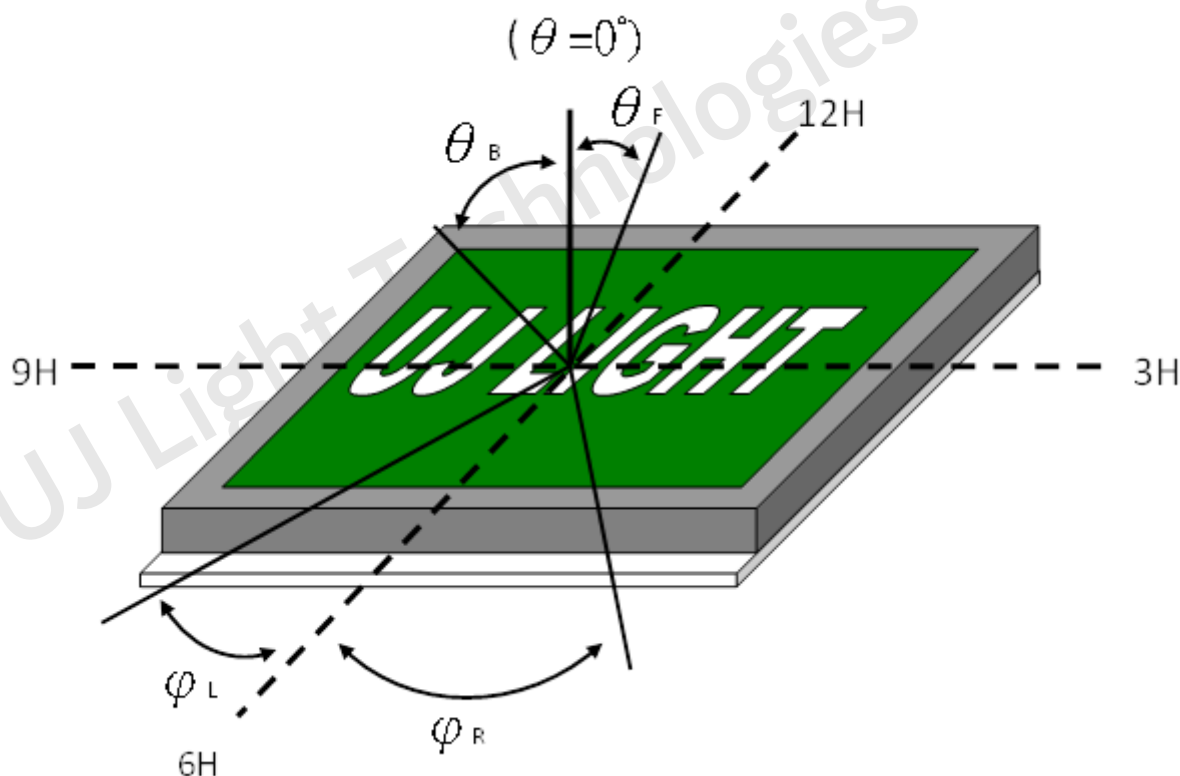
5. Electrical Characteristics

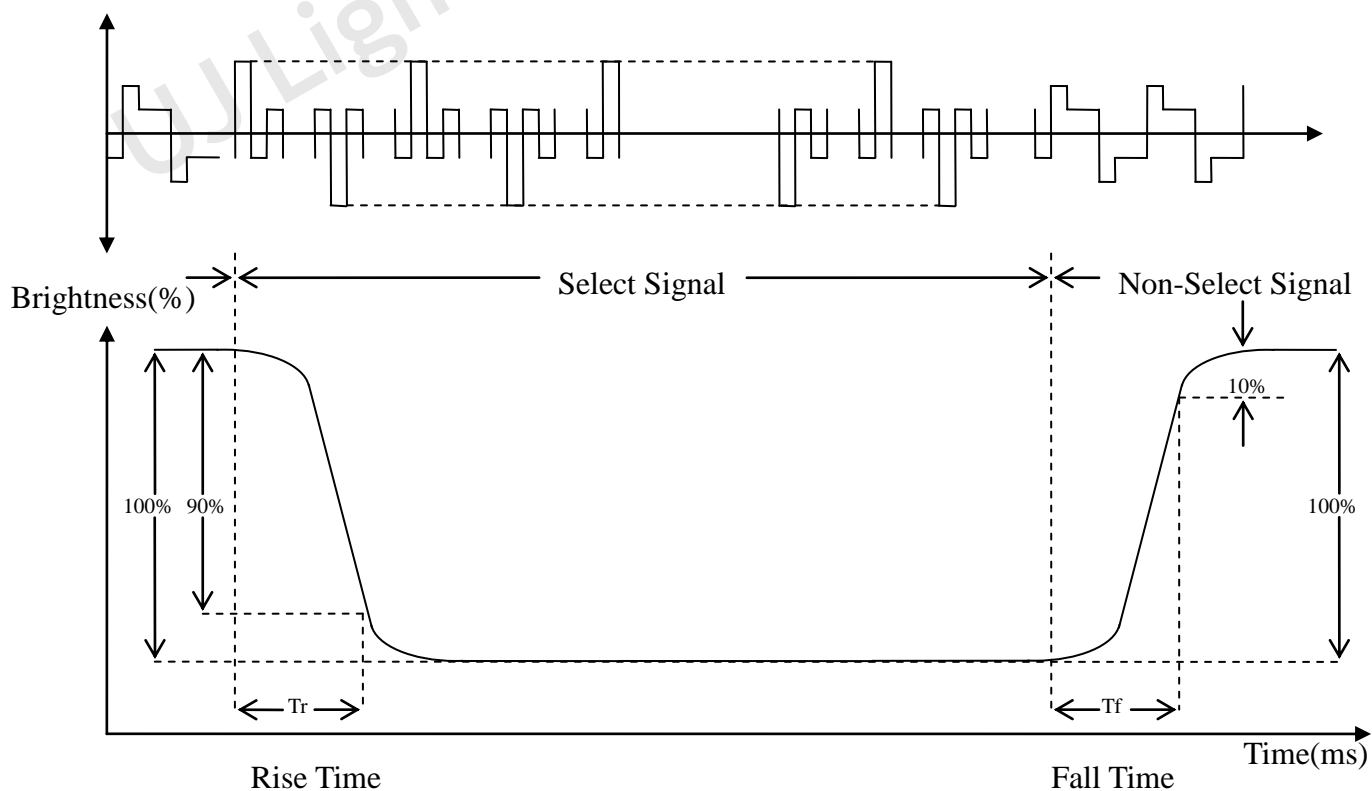
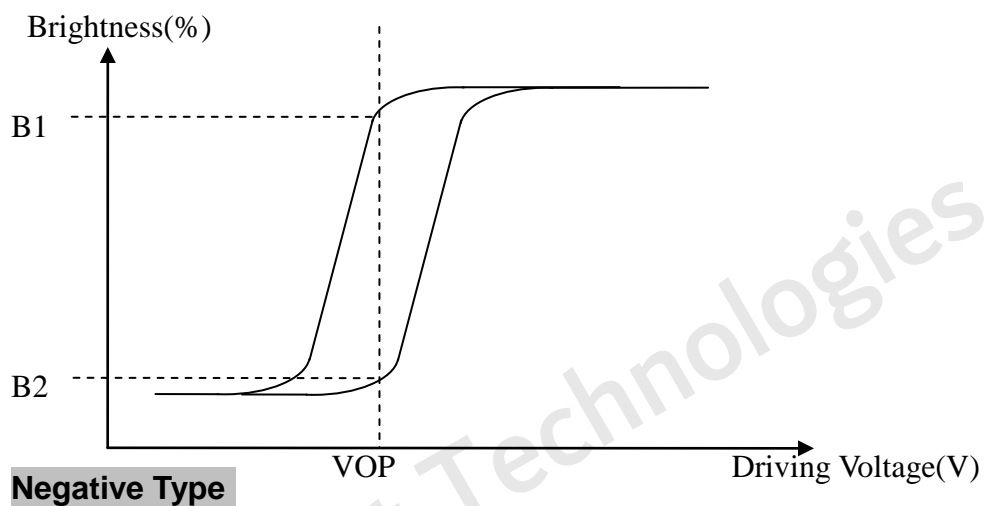
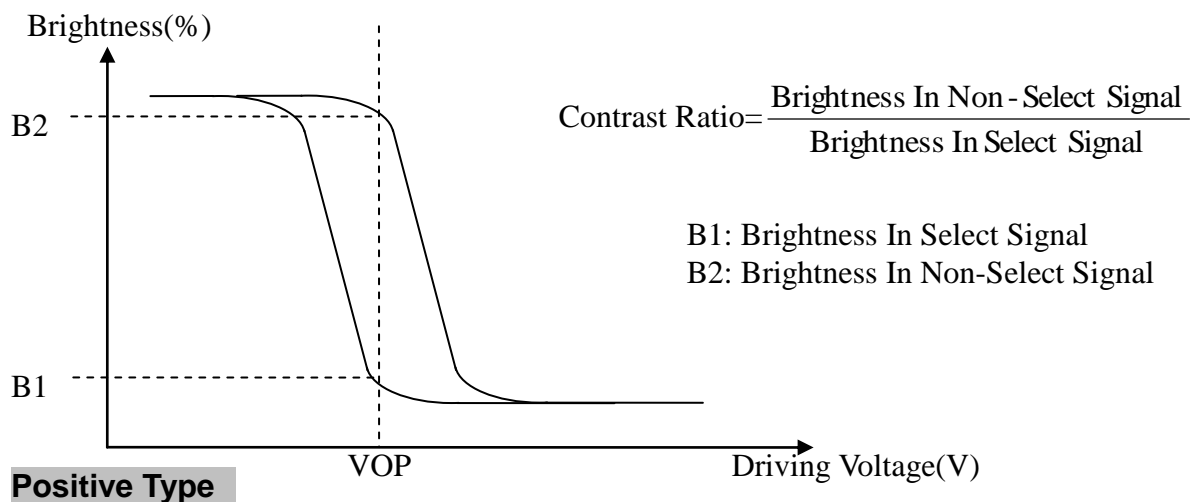
Item	Symbol	Condition	Min.	Typ.	Max.	Unit
Supply Voltage For Logic	Vdd-Vss	—	—	3.0	—	V
Supply Voltage For LCD	Vdd-Vo	Ta=25°C	—	24	—	V
Input High Vol	V _{IH}	—	0.8Vdd	—	Vdd	V
Input Low Vol	V _{IL}	—	0	—	0.2Vdd	V
Output High Vol	V _{OH}	—	Vdd-0.4	—	—	V
Output Low Vol.	V _{OL}	—	—	—	0.4	V
Supply Current	Idd	Vdd=3V	—	100	110	mA
LCM Surface Luminance Ta=25°C	L	I _{LED} = 160mA Display all ON	70	105	—	cd/m ²

6. Optical Characteristics

a. STN

Item	Symbol	Condition	Min.	Typ.	Max.	Unit
View Angle	(V) θ	$CR \geq 2$	10	-	45	deg
	(H) φ	$CR \geq 2$	-30	-	30	deg
Contrast Ratio	CR	-	-	3		-
Response Time 25°C	T rise	-	-	200	350	ms
	T fall	-	-	250	400	ms





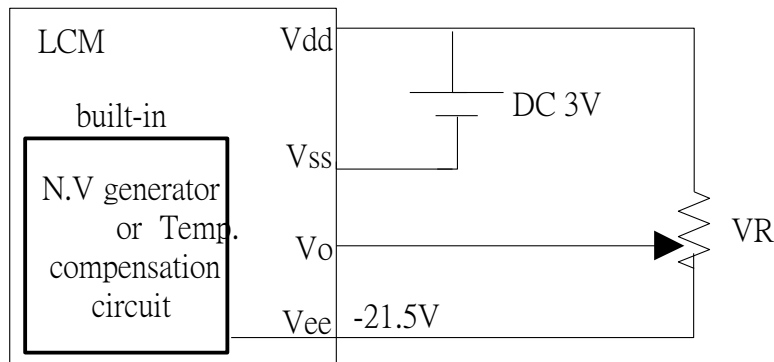
7.Interface Pin Function

Pin No.	Symbol	Level	Description
1	V _{SS}	0V	Ground
2	V _{DD}	3.0V	Power supply for Logic
3	V _O	(Variable)	Driving voltage for LCD
4	E	H/L	6800 family: E signal
5	R/W	H/L	6800 family: Read/Write signal
6	A0	H/L	Data type select
7~14	DB0~DB7	H/L	Data bus
15	$\overline{\text{CS}}$	H/L	Chip select , Active L
16	$\overline{\text{RES}}$	H/L	Controller reset signal, Active L
17	V _{EE}		Negative voltage output (Optional) -21.5V
18	FGND		Frame Ground
19	NC		No connection
20	/DSF		L: Display Off

* 68 Series Interface is Default (8835 series MPU interface is option)

8. Power supply for LCD Module and LCD operating voltage adjustment

LCM operating on "DC 3V" input with built-in negative voltage



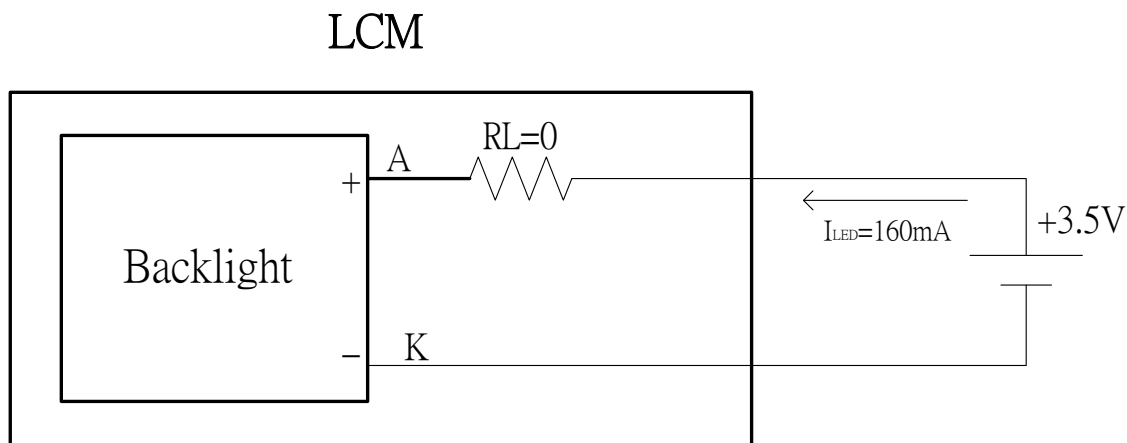
9. Backlight information

(1) LED edge / white

Parameter	Symbol	Min	Typ	Max	Unit	Test Condition
Supply Current	I _{LED}	—	160	—	mA	V=3.5V
Supply Voltage	V	3.2	3.5	3.8	V	I _{LED} =160mA
Reverse Voltage	V _R	—	—	5	V	—
CIE	X	0.28	—	0.35	nm	I _{LED} =160mA
	Y	0.28	—	0.35		
Color	white					

(2) Backlight driving methods

- a. LED B/L drive from A.K directly
 - a.1 edge/white



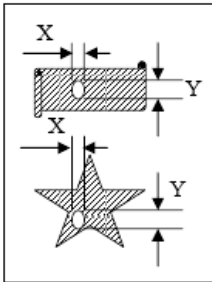
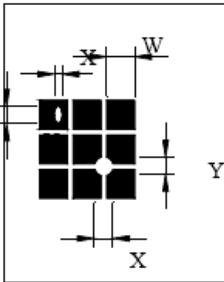
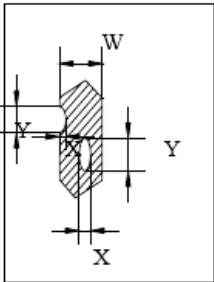
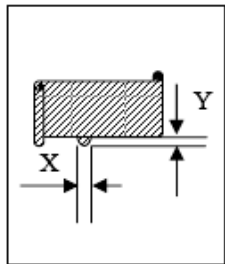
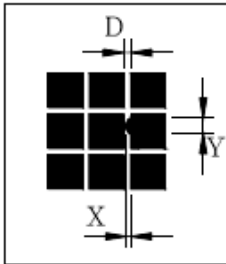
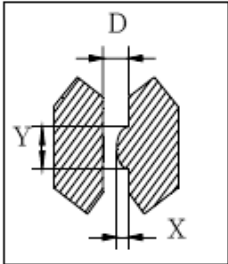
10. Quality Assurance

10.1 Inspection conditions

1. The LCD shall be inspected under 20~40W white fluorescent light.
2. Checking Direction shall be in the 40 degree from perpendicular line of specimen surface.
3. Checker shall see over 30 cm.
4. Inspect about 5 seconds for each side.

10.2 Inspection Parameters

NO.	Parameter	Criteria																								
1	Black or White spots	<table><tr><td colspan="2">Zone Dimension</td><td>Acceptable Number</td><td>Class Of Defects</td><td>Acceptable Level</td></tr><tr><td colspan="2">D≤0.10</td><td>Disregard</td><td rowspan="4">Minor</td><td rowspan="4">0.65</td></tr><tr><td colspan="2">0.10 < D≤0.2</td><td>4</td></tr><tr><td colspan="2">0.2 < D≤0.3</td><td>2</td></tr><tr><td colspan="2">0.3 < D</td><td>0</td></tr></table>				Zone Dimension		Acceptable Number	Class Of Defects	Acceptable Level	D≤0.10		Disregard	Minor	0.65	0.10 < D≤0.2		4	0.2 < D≤0.3		2	0.3 < D		0		
		Zone Dimension		Acceptable Number	Class Of Defects	Acceptable Level																				
		D≤0.10		Disregard	Minor	0.65																				
		0.10 < D≤0.2		4																						
		0.2 < D≤0.3		2																						
		0.3 < D		0																						
D=(Long + Short)/2 Total defects should not exceed 5/module Defect that is located at outside of AA and doesn't affect function is ignored.																										
2	Scratch, Substances	<table><tr><td colspan="2">Zone</td><td rowspan="2">Acceptable Number</td><td rowspan="2">Class Of Defects</td><td rowspan="2">Acceptable Level</td></tr><tr><td>X(mm)</td><td>Y(mm)</td></tr><tr><td>—</td><td>0.05 ≥ W</td><td>Disregard</td><td rowspan="4">Minor</td><td rowspan="4">0.65</td></tr><tr><td>4.0 ≥ L</td><td>0.05 ≥ W</td><td>4</td></tr><tr><td>3.0 ≥ L</td><td>0.1 ≥ W</td><td>2</td></tr><tr><td>—</td><td>0.1 < W</td><td>0</td></tr></table>				Zone		Acceptable Number	Class Of Defects	Acceptable Level	X(mm)	Y(mm)	—	0.05 ≥ W	Disregard	Minor	0.65	4.0 ≥ L	0.05 ≥ W	4	3.0 ≥ L	0.1 ≥ W	2	—	0.1 < W	0
		Zone		Acceptable Number	Class Of Defects	Acceptable Level																				
		X(mm)	Y(mm)																							
		—	0.05 ≥ W	Disregard	Minor	0.65																				
		4.0 ≥ L	0.05 ≥ W	4																						
		3.0 ≥ L	0.1 ≥ W	2																						
—	0.1 < W	0																								
X: Length Y: Width Total defects should not exceed 5/module Defect that is located at outside of AA and doesn't affect function is ignored.																										

3	Air Bubbles (between glass & polarizer)	<table><tr><th>Zone Dimension</th><th>Acceptable Number</th><th>Class Of Defects</th><th>Acceptable Level</th></tr><tr><td>$D \leq 0.2$</td><td>Disregard</td><td rowspan="3">Minor</td><td rowspan="3">0.65</td></tr><tr><td>$0.2 < D \leq 0.5$</td><td>3</td></tr><tr><td>$0.5 < D$</td><td>0</td></tr></table> <p>Total defects shall not excess 3/module. Defect that is located at outside of AA and doesn't affect function is ignored. Bobble is sawn only under reflection light is disregarded.</p>	Zone Dimension	Acceptable Number	Class Of Defects	Acceptable Level	$D \leq 0.2$	Disregard	Minor	0.65	$0.2 < D \leq 0.5$	3	$0.5 < D$	0														
Zone Dimension	Acceptable Number	Class Of Defects	Acceptable Level																									
$D \leq 0.2$	Disregard	Minor	0.65																									
$0.2 < D \leq 0.5$	3																											
$0.5 < D$	0																											
4	Displaying Pattern	<p>1. Incomplete or broken line is not allowed. 2. Pinholes</p> <table><tr><th>Dimension Φ(mm)</th><th>Criteria</th><th>Class Of Defects</th><th>Acceptable Level</th></tr><tr><td>$\Phi < 0.1$</td><td>Disregard</td><td rowspan="4">Minor</td><td rowspan="4">0.65</td></tr><tr><td>$0.1 < \Phi \leq 0.2$</td><td>2</td></tr><tr><td>$0.2 < \Phi \leq 0.25$</td><td>1</td></tr><tr><td>$0.25 < \Phi$</td><td>0</td></tr></table> <div></div> <p style="text-align: center;">$\phi = (X+Y)/2$</p> <p>3. Deformation</p> <table><tr><th>Dimension Φ(mm)</th><th>Criteria</th><th>Class Of Defects</th><th>Acceptable Level</th></tr><tr><td>$\Phi < 0.15$</td><td>Disregard</td><td rowspan="3">Minor</td><td rowspan="3">0.65</td></tr><tr><td>$\Phi \leq 0.25$ and $X \leq 1/2D$</td><td>3</td></tr><tr><td>$\Phi > 0.25$ and $X > 1/2D$</td><td>0</td></tr></table> <div></div> <p style="text-align: center;">D : 間距 $\phi = (X+Y)/2$</p>	Dimension Φ (mm)	Criteria	Class Of Defects	Acceptable Level	$\Phi < 0.1$	Disregard	Minor	0.65	$0.1 < \Phi \leq 0.2$	2	$0.2 < \Phi \leq 0.25$	1	$0.25 < \Phi$	0	Dimension Φ (mm)	Criteria	Class Of Defects	Acceptable Level	$\Phi < 0.15$	Disregard	Minor	0.65	$\Phi \leq 0.25$ and $X \leq 1/2D$	3	$\Phi > 0.25$ and $X > 1/2D$	0
Dimension Φ (mm)	Criteria	Class Of Defects	Acceptable Level																									
$\Phi < 0.1$	Disregard	Minor	0.65																									
$0.1 < \Phi \leq 0.2$	2																											
$0.2 < \Phi \leq 0.25$	1																											
$0.25 < \Phi$	0																											
Dimension Φ (mm)	Criteria	Class Of Defects	Acceptable Level																									
$\Phi < 0.15$	Disregard	Minor	0.65																									
$\Phi \leq 0.25$ and $X \leq 1/2D$	3																											
$\Phi > 0.25$ and $X > 1/2D$	0																											

Other Inspection standard reference UJ LIGHT standard.

11. Reliability

■ Content of Reliability Test

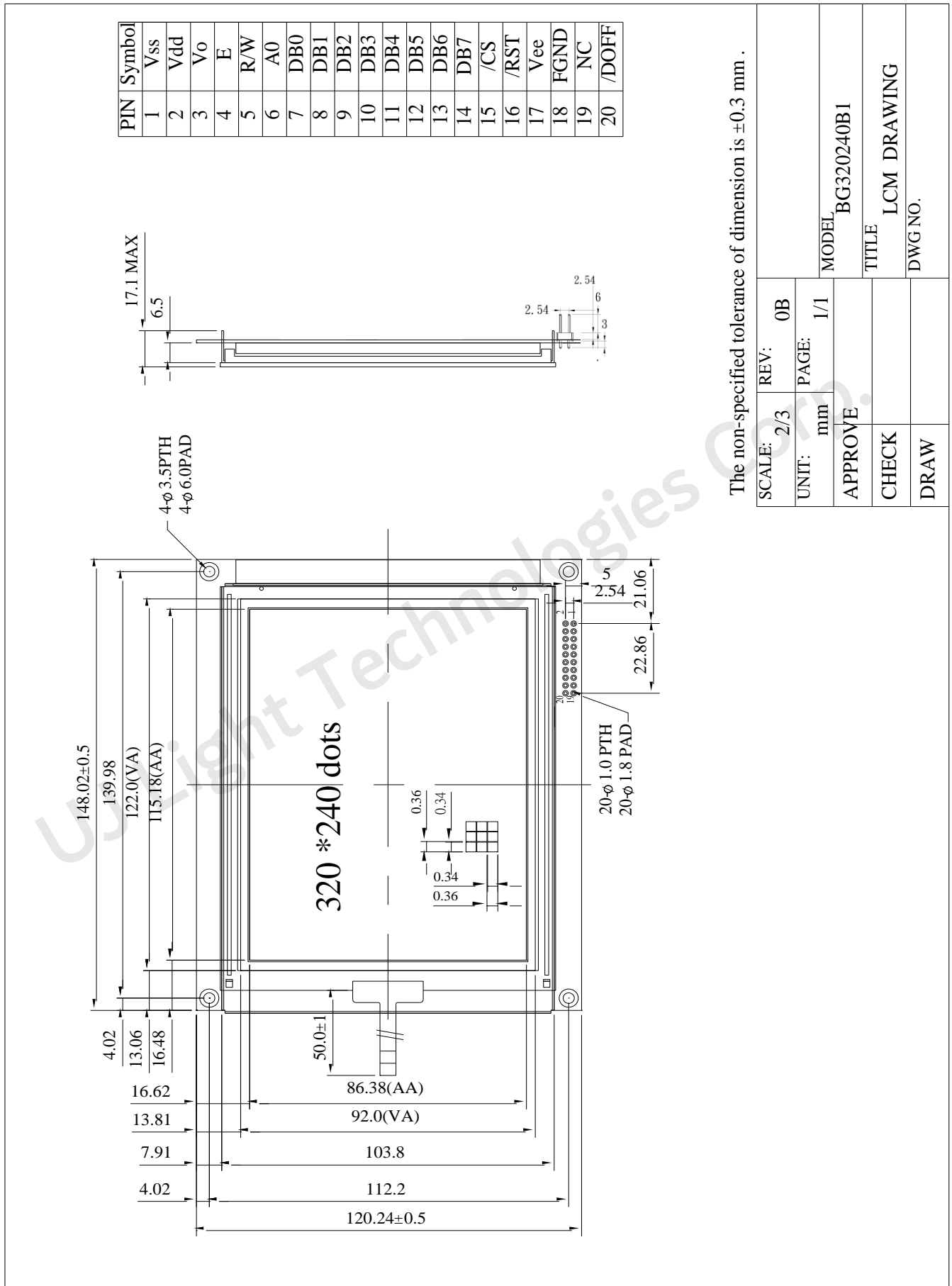
Environmental Test				
No	Test Item	Content of Test	Test Condition	Applicable Standard
1	High Temperature storage	Endurance test applying the high storage temperature for a long time.	80℃ 168 hrs	—
2	Low Temperature storage	Endurance test applying the high storage temperature for a long time.	-30℃ 168 hrs	—
3	High Temperature Operation	Endurance test applying the electric stress (Voltage & Current) and the thermal stress to the element for a long time.	70℃ 168 hrs	—
4	Low Temperature Operation	Endurance test applying the electric stress under low temperature for a long time.	-20℃ 168 hrs	—
5	Humidity Test	Endurance test applying the high humidity storage for a long time.	40℃, 90%RH 168 hrs	—
6	Temperature cycle (Non-operation)	<p>Endurance test applying the low and high temperature cycle.</p> <p>-30℃ 80℃</p> <p>←—————→</p> <p>30min 30min</p> <p>1 cycle</p>	-30℃ / 80℃ 10 cycles	—
7	Vibration test	Endurance test applying the vibration during transportation and using.	<p>Total Fixed Amplitude: 1.5mm</p> <p>Vibration Frequency : 10~55Hz</p> <p>One cycle 60 seconds to 3 direction of X,Y,Z for each 15minutes</p>	—

*** Supply voltage for logic system=5V. Supply voltage for LCD system =Operating voltage at 25℃

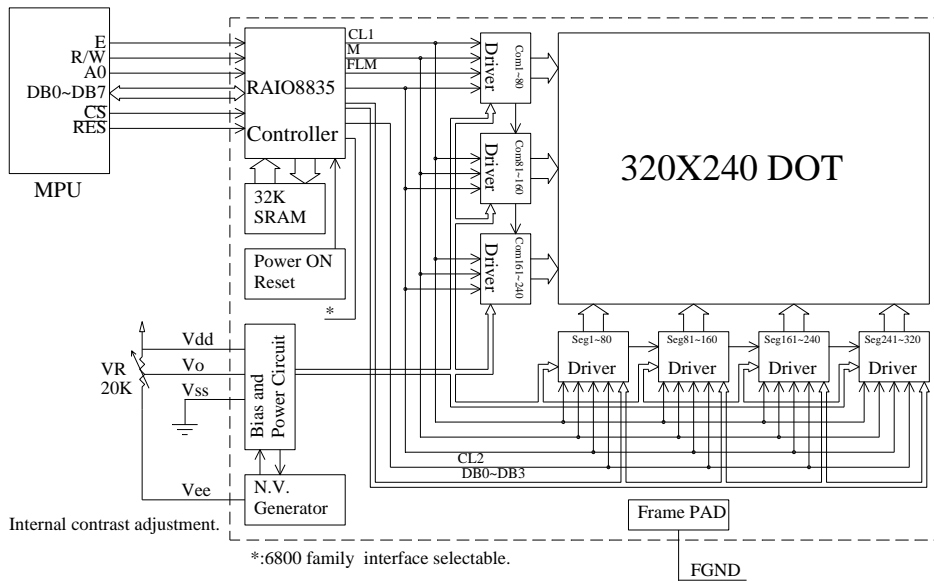


12. Appendix (Drawing , Block Diagram, Timing Characteristics)

12.1 Drawing



12.2 Block Diagram



12.3 Timing characteristics

a.8835 Family Interface Timing

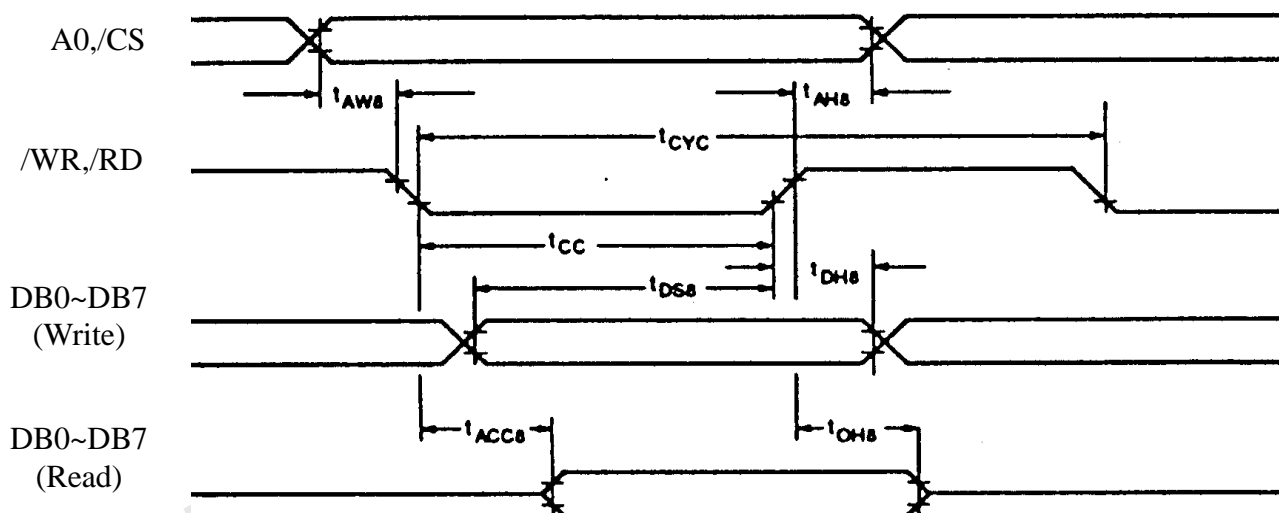
Parameter	Condition	Symbol	Min	Max	Unit	Remark
Address Hold Time	CL=100 pF VDD=2.7~4.5	tAH8	10		ns	A0,/CS
Address Setup Time		tAW8	0		ns	
System Cycle Time		tCYC	Note		ns	/WR,/RD
Strobe Pulse Width		tOC	150		ns	
Data Setup Time		tDS8	120		ns	DB0~DB7
Data Hold Time		tDH8	5		ns	
/RD Access Time		tACC8	-	80	ns	
Output Disable Time		tOH8	10	55	ns	

Note: For memory control and system control commands:

$$t_{CYC8} = 2t_C + t_{OC} + t_{CEA} + 75 > t_{ACV} + 245$$

For all other commands:

$$t_{CYC8} = 4t_C + t_{OC} + 30$$



b. 6800 Family Interface Timing

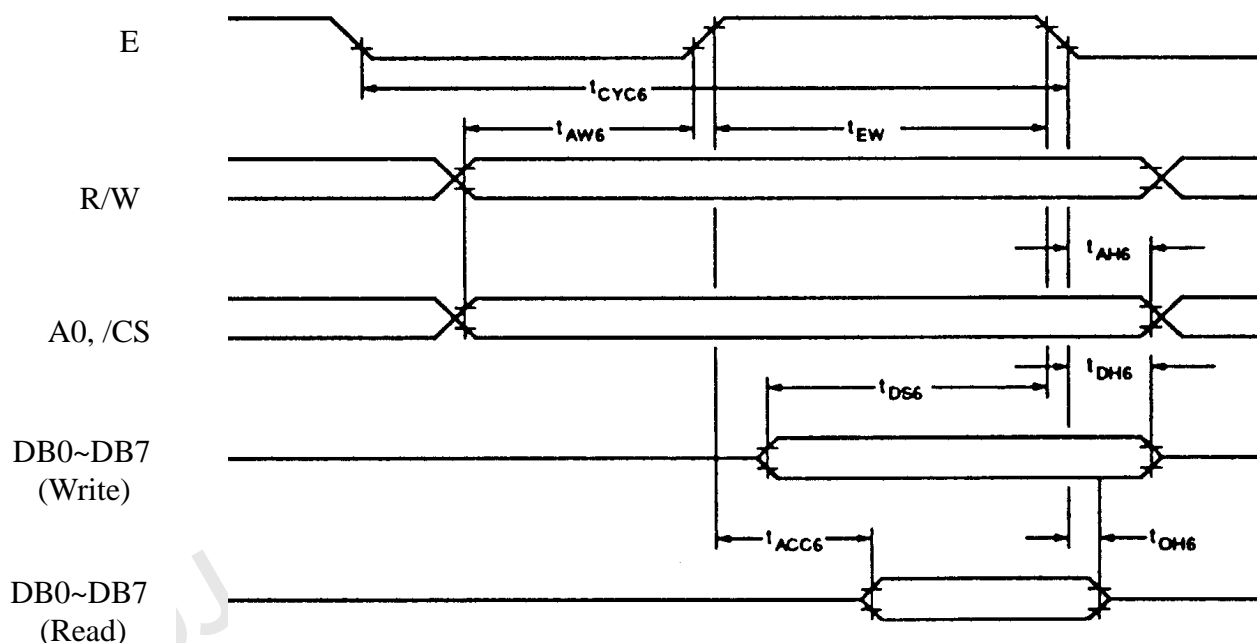
Parameter	Condition	Symbol	Min	Max	Unit	Remark
System Cycle Time	CL=100 pF VDD=2.7~4.5	tCYC6	Note		ns	A0,/CS, R/W
Address Setup Time		tAW6	10		ns	
Address Hold Time		tAH6	0		ns	
Data Setup Time		tDS6	120		ns	DB0~DB7
Data Hold Time		tDH6	0		ns	
Output Disable Time		tOH6	10	75	ns	
Access Time		tACC6	-	130	ns	
Enable Pulsewidth		tEW	150	-	ns	E

Note: For memory control and system control commands:

$$t_{CYC6} = 2t_C + t_{EW} + t_{CEA} + 75 > t_{ACV} + 245$$

For all other commands:

$$t_{CYC6} = 4t_C + t_{EW} + 30$$



AC Electrical Characteristics

12.4 RAIO 8835 controller

Instruction Set

Class	Command	Code												Hex	Command Description	Command Read Parameters	
		RD	WR	A0	D7	D6	D5	D4	D3	D2	D1	D0	No. of Bytes			Section	
System Control	SYSTEM SET	1	0	1	0	1	0	0	0	0	0	0	40	Initialize device and display	8	9-2-1	
	SLEEP IN	1	0	1	0	1	0	1	0	0	1	1	53	Enter standby mode	0	9-2-2	
Display Control	DISPLAY ON/OFF	1	0	1	0	1	0	1	1	0	0	D	58, 59	Enable and disable display and display flashing	1	9-3-1	
	SCROLL	1	0	1	0	1	0	0	0	1	0	0	44	Set display start address and display regions	10	9-3-2	
	CSRFORM	1	0	1	0	1	0	1	1	1	0	1	5D	Set cursor type	2	9-3-3	
	CGRAM ADR	1	0	1	0	1	0	1	1	1	0	0	5C	Set start address of character generator RAM	2	9-3-6	
	CSRDIR	1	0	1	0	1	0	0	1	1	CD 1	CD 0	4C to 4F	Set direction of cursor movement	0	9-3-4	
	HDOT SCR	1	0	1	0	1	0	1	1	0	1	0	5A	Set horizontal scroll position	1	9-3-7	
	OVLAY	1	0	1	0	1	0	1	1	0	1	1	5B	Set display overlay format	1	9-3-5	
Drawing Control	CSRW	1	0	1	0	1	0	0	0	1	1	0	46	Set cursor address	2	9-r1	
	CSRR	1	0	1	0	1	0	0	0	1	1	1	47	Read cursor address	2	9-4-2	
Memory Control	MWRITE	1	0	1	0	1	0	0	0	0	1	0	42	Write to display memory	—	9-5-1	
	MREAD	1	0	1	0	1	0	0	0	0	1	1	43	Read from display memory	—	9-5-2	

Notes:

- In general, the internal registers of the RA8835A series are modified as each command parameter is input. However, the microprocessor does not have to set all the parameters of a command and may send a new command before all parameters have been input. The internal registers for the parameters that have been input will have been changed but the remaining parameter registers are unchanged. 2-byte parameters (where two bytes are treated as 1 data item) are handled as follows:
 - CSRW, CSRR: Each byte is processed individually. The microprocessor may read or write just the low byte of the cursor address.
 - SYSTEM SET, SCROLL, CGRAM ADR: Both parameter bytes are processed together. If the command is changed after half of the parameter has been input, the single byte is ignored.
- APL and APH are 2-byte parameters, but are treated as two 1-byte parameters.

12.5 Touch panel Information

12.5.1 Touch Panel Electrical Specification

Parameter	Specification	Condition
ON Resistance	350 Ω ~ 950 Ω	X Axis
	200 Ω ~ 700 Ω	Y Axis
Insulating Resistance	More than 10M Ω	DC 25 V
Chattering	Less Than 15 ms	100K Pull-Up

12.5.2 Touch panel Drawing

