

UT 10 BK - Feed-through terminal block



3046320

<https://www.phoenixcontact.com/il/products/3046320>

Please be informed that the data shown in this PDF document is generated from our Online Catalog. Please find the complete data in the user documentation. Our General Terms of Use for Downloads are valid.



Feed-through terminal block, nom. voltage: 1000 V, nominal current: 57 A, connection method: Screw connection, Rated cross section: 10 mm², cross section: 0.5 mm² - 16 mm², mounting type: NS 35/7,5, NS 35/15, color: black

Your advantages

- The large wiring space enables the connection of solid and stranded conductors without ferrules, even above the nominal cross section
- As well as saving space, the compact design enables user-friendly wiring in a small amount of space
- Optimum screwdriver guidance through closed screw shafts
- The cable entry funnel enables the use of conductors with ferrules and plastic collars within the nominal cross section

Commercial Data

| | |
|--------------------------------------|--------------------|
| Item number | 3046320 |
| Packing unit | 50 pc |
| Minimum order quantity | 1 pc |
| Product Key | BE1111 |
| Catalog Page | Page 27 (C-3-2013) |
| GTIN | 4017918975661 |
| Weight per Piece (including packing) | 17.868 g |
| Weight per Piece (excluding packing) | 17.73 g |
| Customs tariff number | 85369010 |
| Country of origin | DE |

UT 10 BK - Feed-through terminal block



3046320

<https://www.phoenixcontact.com/il/products/3046320>

Technical Data

Product properties

| | |
|-----------------------|-----------------------------|
| Product type | Feed-through terminal block |
| Number of connections | 2 |
| Number of rows | 1 |
| Potentials | 1 |

Insulation characteristics

| | |
|----------------------|-----|
| Overvoltage category | III |
| Degree of pollution | 3 |

Electrical properties

| | |
|---|--------|
| Rated surge voltage | 8 kV |
| Maximum power dissipation for nominal condition | 1.82 W |

Connection data

| | |
|---------------------------------|--------------------|
| Number of connections per level | 2 |
| Nominal cross section | 10 mm ² |

Level 1 above 1 below 1

| | |
|---|--|
| Screw thread | M4 |
| Tightening torque | 1.5 ... 1.8 Nm |
| Stripping length | 10 mm |
| Internal cylindrical gage | A6 |
| Connection in acc. with standard | IEC 60947-7-1 |
| Conductor cross section rigid | 0.5 mm ² ... 16 mm ² |
| Cross section AWG | 20 ... 6 (converted acc. to IEC) |
| Conductor cross section flexible | 0.5 mm ² ... 16 mm ² |
| Conductor cross section, flexible [AWG] | 20 ... 6 (converted acc. to IEC) |
| Conductor cross-section flexible (ferrule without plastic sleeve) | 0.5 mm ² ... 10 mm ² |
| Flexible conductor cross section (ferrule with plastic sleeve) | 0.5 mm ² ... 10 mm ² |
| 2 conductors with same cross section, solid | 0.5 mm ² ... 4 mm ² |
| 2 conductors with same cross section, flexible | 0.5 mm ² ... 4 mm ² |
| 2 conductors with same cross section, flexible, with ferrule without plastic sleeve | 0.5 mm ² ... 2.5 mm ² |
| 2 conductors with the same cross section, flexible, with TWIN ferrule with plastic sleeve | 0.5 mm ² ... 6 mm ² |
| Nominal current | 57 A |
| Maximum load current | 76 A (with 16 mm ² conductor cross section) |
| Nominal voltage | 1000 V |
| Note | Note: Product releases, connection cross sections and notes on connecting aluminum cables can be found in the download area. |
| Nominal cross section | 10 mm ² |

UT 10 BK - Feed-through terminal block



3046320

<https://www.phoenixcontact.com/il/products/3046320>

Ex data

Rated data (ATEX/IECEx)

| | |
|-----------------------------|--|
| Identification | □ II 2 GD Ex eb IIC Gb |
| Operating temperature range | -60 °C ... 110 °C |
| Ex-certified accessories | 3047028 D-UT 2,5/10 1205066 SZS 1,0X4,0 VDE 3022276 CLIPFIX 35-5 3022218 CLIPFIX 35 |
| List of bridges | Plug-in bridge / FBS 2-10 / 3005947 Plug-in bridge / FBS 5-10 / 3005948 |
| Bridge data | 54 A / 10 mm ² |
| Ex temperature increase | 40 K (60.1 A / 10 mm ²) |
| Rated voltage | 690 V |
| for bridging with bridge | 690 V |
| Rated insulation voltage | 630 V |
| output | (Permanent) |

Ex level General

| | |
|----------------------|---------|
| Rated current | 54 A |
| Maximum load current | 69 A |
| Contact resistance | 0.16 mΩ |

Ex connection data General

| | |
|---|--|
| Torque range | 1.5 Nm ... 1.8 Nm |
| Nominal cross section | 10 mm ² |
| Rated cross section AWG | 8 |
| Connection capacity rigid | 0.5 mm ² ... 16 mm ² |
| Connection capacity AWG | 20 ... 6 |
| Connection capacity flexible | 0.5 mm ² ... 10 mm ² |
| Connection capacity AWG | 20 ... 8 |
| 2 conductors with same cross section, solid | 0.5 mm ² ... 4 mm ² |
| 2 conductors with the same cross-section AWG rigid | 20 ... 12 |
| 2 conductors with same cross section, stranded | 0.5 mm ² ... 4 mm ² |
| 2 conductors with the same cross-section AWG flexible | 20 ... 12 |

Dimensions

| | |
|------------------|---------|
| Width | 10.2 mm |
| End cover width | 2.2 mm |
| Height NS 35/15 | 55 mm |
| Height NS 35/7,5 | 47.5 mm |
| Length | 47.7 mm |

Material specifications

| | |
|-------|-------|
| Color | black |
|-------|-------|

UT 10 BK - Feed-through terminal block



3046320

<https://www.phoenixcontact.com/il/products/3046320>

| | |
|---|-------------|
| Flammability rating according to UL 94 | V0 |
| Insulating material group | I |
| Insulating material | PA |
| Static insulating material application in cold | -60 °C |
| Temperature index of insulation material (DIN EN 60216-1 (VDE 0304-21)) | 125 °C |
| Relative insulation material temperature index (Elec., UL 746 B) | 130 °C |
| Fire protection for rail vehicles (DIN EN 45545-2) R22 | HL 1 - HL 3 |
| Fire protection for rail vehicles (DIN EN 45545-2) R23 | HL 1 - HL 3 |
| Fire protection for rail vehicles (DIN EN 45545-2) R24 | HL 1 - HL 3 |
| Fire protection for rail vehicles (DIN EN 45545-2) R26 | HL 1 - HL 3 |
| Calorimetric heat release NFPA 130 (ASTM E 1354) | 27,5 MJ/kg |
| Surface flammability NFPA 130 (ASTM E 162) | passed |
| Specific optical density of smoke NFPA 130 (ASTM E 662) | passed |
| Smoke gas toxicity NFPA 130 (SMP 800C) | passed |

Electrical tests

Surge voltage test

| | |
|-----------------------|-------------|
| Test voltage setpoint | 9.8 kV |
| Result | Test passed |

Temperature-rise test

| | |
|---|-------------------------------------|
| Requirement temperature-rise test | Increase in temperature \leq 45 K |
| Result | Test passed |
| | Test passed |
| Short-time withstand current 10 mm ² | 1.2 kA |
| Result | Test passed |

Power-frequency withstand voltage

| | |
|--------|-------------|
| Result | Test passed |
|--------|-------------|

Mechanical properties

Mechanical data

| | |
|-----------------|-----|
| Open side panel | Yes |
|-----------------|-----|

Mechanical tests

Mechanical strength

| | |
|--------|-------------|
| Result | Test passed |
|--------|-------------|

Attachment on the carrier

| | |
|-------------------------|-------------|
| DIN rail/fixing support | NS 35 |
| Test force setpoint | 5 N |
| Result | Test passed |

Test for conductor damage and slackening

UT 10 BK - Feed-through terminal block



3046320

<https://www.phoenixcontact.com/il/products/3046320>

| | |
|--------------------------------|------------------------------|
| Rotation speed | 10 rpm |
| Revolutions | 135 |
| Conductor cross section/weight | 0.5 mm ² / 0.3 kg |
| | 10 mm ² / 2 kg |
| | 16 mm ² / 2.9 kg |
| Result | Test passed |

Environmental and real-life conditions

Aging

| | |
|--------------------|-----|
| Temperature cycles | 192 |
|--------------------|-----|

Needle-flame test

| | |
|------------------|-------------|
| Time of exposure | 30 s |
| Result | Test passed |

Ambient conditions

| | |
|--|---|
| Ambient temperature (operation) | -60 °C ... 105 °C (max. short-term operating temperature RTI Elec.) |
| Ambient temperature (storage/transport) | -25 °C ... 60 °C (for a short time, not exceeding 24 h, -60 °C to +70 °C) |
| Ambient temperature (assembly) | -5 °C ... 70 °C |
| Ambient temperature (actuation) | -5 °C ... 70 °C |
| Permissible humidity (storage/transport) | 30 % ... 70 % |

Standards and regulations

| | |
|----------------------------------|---------------|
| Connection in acc. with standard | IEC 60947-7-1 |
|----------------------------------|---------------|

Mounting

| | |
|---------------|-----------|
| Mounting type | NS 35/7,5 |
| | NS 35/15 |

UT 10 BK - Feed-through terminal block

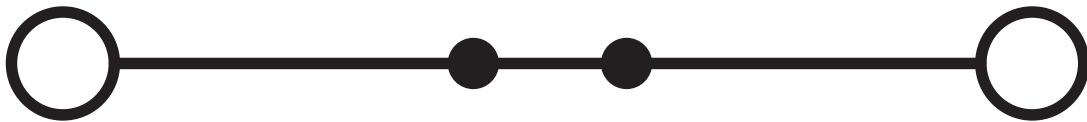
3046320

<https://www.phoenixcontact.com/il/products/3046320>



Drawings

Circuit diagram




UT 10 BK - Feed-through terminal block




3046320


<https://www.phoenixcontact.com/il/products/3046320>

Approvals

|  CSA Approval ID: 13631 | | | | |
|--|-----------------------|-----------------------|-------------------|-----------------------------|
| | Nominal Voltage U_N | Nominal Current I_N | Cross Section AWG | Cross Section mm^2 |
| Use group B | 600 V | 65 A | 20 - 6 | - |
| Use group C | 600 V | 65 A | 20 - 6 | - |

|  IECEE CB Scheme Approval ID: DE1-63061_M1 | | | | |
|---|-----------------------|-----------------------|-------------------|-----------------------------|
| | Nominal Voltage U_N | Nominal Current I_N | Cross Section AWG | Cross Section mm^2 |
| | 1000 V | 57 A | - | 0.5 - 10 |

|  cULus Recognized Approval ID: E60425 | | | | |
|--|-----------------------|-----------------------|-------------------|-----------------------------|
| | Nominal Voltage U_N | Nominal Current I_N | Cross Section AWG | Cross Section mm^2 |
| Use group B | 600 V | 65 A | 20 - 6 | - |
| Use group C | 600 V | 65 A | 20 - 6 | - |

|  RS Approval ID: 22.44.01.00083.250 | | | | |
|--|--|--|--|--|
|--|--|--|--|--|

|  VDE Zeichengenehmigung Approval ID: 40013658 | | | | |
|--|-----------------------|-----------------------|-------------------|-----------------------------|
| | Nominal Voltage U_N | Nominal Current I_N | Cross Section AWG | Cross Section mm^2 |
| | 1000 V | 57 A | - | 0.5 - 10 |

|  ATEX Approval ID: KEMA04ATEX2048U | | | | |
|---|--|--|--|--|
|---|--|--|--|--|

|  EAC Ex Approval ID: RU C-DE.HA91.B.00066 | | | | |
|--|--|--|--|--|
|--|--|--|--|--|

|  IECEx Approval ID: IECEx KEM 06.0027U | | | | |
|---|--|--|--|--|
|---|--|--|--|--|

UT 10 BK - Feed-through terminal block



3046320

<https://www.phoenixcontact.com/il/products/3046320>



CCC

Approval ID: 2020322313000622



NEPSI

Approval ID: GYJ20.1194U



UKCA-EX

Approval ID: DEKRA 21UKEX0304U

UT 10 BK - Feed-through terminal block



3046320

<https://www.phoenixcontact.com/il/products/3046320>

Classifications

ECLASS

ECLASS-11.0

27141120

ETIM

ETIM 8.0

EC000897

UNSPSC

UNSPSC 21.0

39121400

UT 10 BK - Feed-through terminal block



3046320

<https://www.phoenixcontact.com/il/products/3046320>

Environmental Product Compliance

| | |
|------------|--|
| REACH SVHC | Lead 7439-92-1 |
| China RoHS | Environmentally Friendly Use Period = 50 years |
| | For information on hazardous substances, refer to the manufacturer's declaration available under "Downloads" |

UT 10 BK - Feed-through terminal block

3046320

<https://www.phoenixcontact.com/il/products/3046320>

Accessories

 Note: Applying some accessories below might limit this product.


FBS 2-10 - Plug-in bridge

3005947

<https://www.phoenixcontact.com/il/products/3005947>



Plug-in bridge, pitch: 10.2 mm, number of positions: 2, color: red

 Max. current carrying capacity: 57 A

FBS 5-10 - Plug-in bridge

3005948

<https://www.phoenixcontact.com/il/products/3005948>



Plug-in bridge, pitch: 10.2 mm, number of positions: 5, color: red

 Max. current carrying capacity: 57 A

UT 10 BK - Feed-through terminal block

3046320

<https://www.phoenixcontact.com/il/products/3046320>




FBS 5-10 BU - Plug-in bridge

1040620

<https://www.phoenixcontact.com/il/products/1040620>



Plug-in bridge, pitch: 10.2 mm, number of positions: 5, color: blue

 Max. current carrying capacity: 57 A


RB UT 35-10 - Reducing bridge

3032168

<https://www.phoenixcontact.com/il/products/3032168>



Reducing bridge, pitch: 13.2 mm, number of positions: 2, color: red

 Max. current carrying capacity: 57 A

UT 10 BK - Feed-through terminal block

3046320

<https://www.phoenixcontact.com/il/products/3046320>



RB UT 10-(2,5/4) - Reducing bridge

3047060

<https://www.phoenixcontact.com/il/products/3047060>



Reducing bridge, pitch: 10.2 mm, number of positions: 2, length: 29 mm, color: red

 Max. current carrying capacity: 40 A


RB UT 10-ST(2,5/4) - Reducing bridge

3047086

<https://www.phoenixcontact.com/il/products/3047086>



Reducing bridge, pitch: 10.2 mm, number of positions: 2, length: 33 mm, color: red

 Max. current carrying capacity: 40 A

UT 10 BK - Feed-through terminal block

3046320

<https://www.phoenixcontact.com/il/products/3046320>



AGK 4-UT 10 - Pick-off terminal block

3047112

<https://www.phoenixcontact.com/il/products/3047112>



Pick-off terminal block, nom. voltage: 1000 V, nominal current: 32 A, connection method: Screw connection, cross section: 0.14 mm² - 6 mm², mounting type: on base element, color: gray

D-UT 2,5/10 - End cover

3047028

<https://www.phoenixcontact.com/il/products/3047028>



End cover, length: 47 mm, width: 2.2 mm, height: 39.8 mm, color: gray

UT 10 BK - Feed-through terminal block

3046320

<https://www.phoenixcontact.com/il/products/3046320>



ATP-UT - Partition plate

3047167

<https://www.phoenixcontact.com/il/products/3047167>



Partition plate, length: 53.4 mm, width: 2.2 mm, height: 45.7 mm, color: gray

SZS 1,0X4,0 VDE - Screwdriver

1205066

<https://www.phoenixcontact.com/il/products/1205066>



Screwdriver, slot-headed, VDE insulated, size: 1.0 x 4.0 x 100 mm, 2-component grip, with non-slip grip

UT 10 BK - Feed-through terminal block

3046320

<https://www.phoenixcontact.com/il/products/3046320>



X-PEN 0,35 - Marker pen

0811228

<https://www.phoenixcontact.com/il/products/0811228>



Marker pen without ink cartridge, for manual labeling of markers, labeling extremely wipe-proof, line thickness 0.35 mm

NS 35/ 7,5 PERF 2000MM - DIN rail perforated

0801733

<https://www.phoenixcontact.com/il/products/0801733>



DIN rail perforated, acc. to EN 60715, material: Steel, galvanized, passivated with a thick layer, Standard profile, color: silver, Pack of 25 (50 m)

UT 10 BK - Feed-through terminal block

3046320

<https://www.phoenixcontact.com/il/products/3046320>



NS 35/ 7,5 UNPERF 2000MM - DIN rail, unperforated

0801681

<https://www.phoenixcontact.com/il/products/0801681>



DIN rail, unperforated, acc. to EN 60715, material: Steel, galvanized, passivated with a thick layer, Standard profile, color: silver, Pack of 25 (50 m)

NS 35/ 7,5 WH PERF 2000MM - DIN rail perforated

1204119

<https://www.phoenixcontact.com/il/products/1204119>



DIN rail perforated, acc. to EN 60715, material: Steel, Galvanized, white passivated, Standard profile, color: silver, Pack of 25 (50 m)

UT 10 BK - Feed-through terminal block

3046320

<https://www.phoenixcontact.com/il/products/3046320>



NS 35/ 7,5 WH UNPERF 2000MM-VPE 10 - DIN rail, unperforated

1204122

<https://www.phoenixcontact.com/il/products/1204122>



DIN rail, unperforated, acc. to EN 60715, material: Steel, Galvanized, white passivated, Standard profile, color: silver, Pack of 10 (20 m)

NS 35/ 7,5 AL UNPERF 2000MM - DIN rail, unperforated

0801704

<https://www.phoenixcontact.com/il/products/0801704>



DIN rail, unperforated, acc. to EN 60715, material: Aluminum, uncoated, Standard profile, color: silver, Pack of 25 (50 m)

UT 10 BK - Feed-through terminal block

3046320

<https://www.phoenixcontact.com/il/products/3046320>



NS 35/ 7,5 ZN PERF 2000MM - DIN rail perforated

1206421

<https://www.phoenixcontact.com/il/products/1206421>



DIN rail perforated, acc. to EN 60715, material: Steel, galvanized, Standard profile, color: silver, Pack of 25 (50 m)

NS 35/ 7,5 ZN UNPERF 2000MM - DIN rail, unperforated

1206434

<https://www.phoenixcontact.com/il/products/1206434>



DIN rail, unperforated, acc. to EN 60715, material: Steel, galvanized, Standard profile, color: silver, Pack of 25 (50 m)

UT 10 BK - Feed-through terminal block

3046320

<https://www.phoenixcontact.com/il/products/3046320>



NS 35/ 7,5 CU UNPERF 2000MM-VPE 10 - DIN rail, unperforated

0801762

<https://www.phoenixcontact.com/il/products/0801762>



DIN rail, unperforated, acc. to EN 60715, material: Copper, uncoated, Standard profile, color: copper-colored, Pack of 10 (20 m)

NS 35/ 7,5 CAP - End cap

1206560

<https://www.phoenixcontact.com/il/products/1206560>

DIN rail end piece, for DIN rail NS 35/7.5



UT 10 BK - Feed-through terminal block

3046320

<https://www.phoenixcontact.com/il/products/3046320>



NS 35/15 PERF 2000MM - DIN rail perforated

1201730

<https://www.phoenixcontact.com/il/products/1201730>



DIN rail perforated, similar to EN 60715, material: Steel, galvanized, passivated with a thick layer, Standard profile, color: silver, Pack of 25 (50 m)

NS 35/15 UNPERF 2000MM - DIN rail, unperforated

1201714

<https://www.phoenixcontact.com/il/products/1201714>



DIN rail, unperforated, similar to EN 60715, material: Steel, galvanized, passivated with a thick layer, Standard profile, color: silver, Pack of 25 (50 m)

UT 10 BK - Feed-through terminal block

3046320

<https://www.phoenixcontact.com/il/products/3046320>



NS 35/15 WH PERF 2000MM - DIN rail perforated

0806602

<https://www.phoenixcontact.com/il/products/0806602>



DIN rail perforated, similar to EN 60715, material: Steel, Galvanized, white passivated, Standard profile, color: white, Pack of 25 (50 m)

NS 35/15 WH UNPERF 2000MM-VPE 10 - DIN rail, unperforated

1204135

<https://www.phoenixcontact.com/il/products/1204135>



DIN rail, unperforated, similar to EN 60715, material: Steel, Galvanized, white passivated, Standard profile, color: silver, Pack of 10 (20 m)

UT 10 BK - Feed-through terminal block

3046320

<https://www.phoenixcontact.com/il/products/3046320>



NS 35/15 AL UNPERF 2000MM - DIN rail, unperforated

1201756

<https://www.phoenixcontact.com/il/products/1201756>



DIN rail, unperforated, similar to EN 60715, material: Aluminum, uncoated, Standard profile, color: silver

NS 35/15 ZN PERF 2000MM - DIN rail perforated

1206599

<https://www.phoenixcontact.com/il/products/1206599>



DIN rail perforated, similar to EN 60715, material: Steel, galvanized, Standard profile, color: silver, Pack of 25 (50 m)

UT 10 BK - Feed-through terminal block

3046320

<https://www.phoenixcontact.com/il/products/3046320>



NS 35/15 ZN UNPERF 2000MM - DIN rail, unperforated

1206586

<https://www.phoenixcontact.com/il/products/1206586>



DIN rail, unperforated, similar to EN 60715, material: Steel, galvanized, Standard profile, color: silver, Pack of 25 (50 m)

NS 35/15 CU UNPERF 2000MM-VPE 10 - DIN rail, unperforated

1201895

<https://www.phoenixcontact.com/il/products/1201895>



DIN rail, unperforated, similar to EN 60715, material: Copper, uncoated, Standard profile, color: copper-colored, Pack of 10 (20 m)

UT 10 BK - Feed-through terminal block

3046320

<https://www.phoenixcontact.com/il/products/3046320>



NS 35/15 CAP - End cap

1206573

<https://www.phoenixcontact.com/il/products/1206573>

DIN rail end piece, for DIN rail NS 35/15



NS 35/15-2,3 UNPERF 2000MM-VPE 10 - DIN rail, unperforated

1201798

<https://www.phoenixcontact.com/il/products/1201798>



DIN rail, unperforated, acc. to EN 60715, material: Steel, galvanized, passivated with a thick layer, Standard profile 2.3 mm, color: silver, Pack of 10 (20 m)

UT 10 BK - Feed-through terminal block

3046320

<https://www.phoenixcontact.com/il/products/3046320>

ZB 10:UNBEDRUCKT - Zack marker strip

1053001

<https://www.phoenixcontact.com/il/products/1053001>



Zack marker strip, Strip, white, unlabeled, can be labeled with: PLOTMARK, CMS-P1-PLOTTER, mounting type: snapped, for terminal block width: 10.2 mm, lettering field size: 10.5 x 10.15 mm, Number of individual labels: 10

ZB 10 CUS - Zack marker strip

0824941

<https://www.phoenixcontact.com/il/products/0824941>



Zack marker strip, can be ordered: Strip, white, labeled according to customer specifications, mounting type: snap into tall marker groove, for terminal block width: 10.2 mm, lettering field size: 10,15 x 10,5 mm, Number of individual labels: 10

UT 10 BK - Feed-through terminal block



3046320

<https://www.phoenixcontact.com/il/products/3046320>

ZB10,LGS:FORTL.ZAHLEN - Zack marker strip

1053014

<https://www.phoenixcontact.com/il/products/1053014>



Zack marker strip, Strip, white, labeled, can be labeled with: CMS-P1-PLOTTER, printed horizontally: consecutive numbers 1 ... 10, 11 ... 20, etc. up to 91 ... 100, mounting type: snapped, for terminal block width: 10.2 mm, lettering field size: 10,15 x 10,5 mm, Number of individual labels: 10

ZB10,QR:FORTL.ZAHLEN - Zack marker strip

1053027

<https://www.phoenixcontact.com/il/products/1053027>



Zack marker strip, Strip, white, labeled, can be labeled with: CMS-P1-PLOTTER, Printed vertically: consecutive numbers 1 ... 10, 11 ... 20, etc. up to 91 ... 100, mounting type: snapped, for terminal block width: 10.2 mm, lettering field size: 10,15 x 10,5 mm, Number of individual labels: 10

UT 10 BK - Feed-through terminal block

3046320

<https://www.phoenixcontact.com/il/products/3046320>

ZB10,LGS:L1-N,PE - Marker for terminal blocks

1053412

<https://www.phoenixcontact.com/il/products/1053412>



Marker for terminal blocks, Strip, white, labeled, can be labeled with: CMS-P1-PLOTTER, horizontal: L1, L2, L3, N, PE, L1, L2, L3, N, PE, mounting type: snapped, for terminal block width: 10.2 mm, lettering field size: 10,15 x 10,5 mm, Number of individual labels: 10

ZB10,LGS:U-N - Marker for terminal blocks

1053438

<https://www.phoenixcontact.com/il/products/1053438>



Marker for terminal blocks, Strip, white, labeled, can be labeled with: CMS-P1-PLOTTER, horizontal: U, V, W, N, GND, U, V, W, N, GND, mounting type: snapped, for terminal block width: 10.2 mm, lettering field size: 10,15 x 10,5 mm, Number of individual labels: 10

UT 10 BK - Feed-through terminal block

3046320

<https://www.phoenixcontact.com/il/products/3046320>



UC-TM 10 - Marker for terminal blocks

0818069

<https://www.phoenixcontact.com/il/products/0818069>



Marker for terminal blocks, Sheet, white, unlabeled, can be labeled with: BLUEMARK ID COLOR, BLUEMARK ID, BLUEMARK CLED, PLOTMARK, CMS-P1-PLOTTER, mounting type: snapped, for terminal block width: 10.2 mm, lettering field size: 9.6 x 10.5 mm, Number of individual labels: 48

UC-TM 10 CUS - Marker for terminal blocks

0824605

<https://www.phoenixcontact.com/il/products/0824605>



Marker for terminal blocks, can be ordered: by sheet, white, labeled according to customer specifications, mounting type: snap into tall marker groove, for terminal block width: 10.2 mm, lettering field size: 9.6 x 10.5 mm, Number of individual labels: 48

UT 10 BK - Feed-through terminal block

3046320

<https://www.phoenixcontact.com/il/products/3046320>



UCT-TM 10 - Marker for terminal blocks

0829142

<https://www.phoenixcontact.com/il/products/0829142>



Marker for terminal blocks, Sheet, white, unlabeled, can be labeled with: TOPMARK NEO, TOPMARK LASER, BLUEMARK ID COLOR, BLUEMARK ID, BLUEMARK CLED, THERMOMARK PRIME, THERMOMARK CARD 2.0, THERMOMARK CARD, mounting type: snapped, for terminal block width: 10.2 mm, lettering field size: 8.9 x 9.6 mm, Number of individual labels: 36

UCT-TM 10 CUS - Marker for terminal blocks

0829623

<https://www.phoenixcontact.com/il/products/0829623>



Marker for terminal blocks, can be ordered: by sheet, white, labeled according to customer specifications, mounting type: snap into tall marker groove, for terminal block width: 10.2 mm, lettering field size: 8.9 x 9.6 mm, Number of individual labels: 36

UT 10 BK - Feed-through terminal block

3046320

<https://www.phoenixcontact.com/il/products/3046320>



TMT 10 R - Marker for terminal blocks

0816210

<https://www.phoenixcontact.com/il/products/0816210>



Marker for terminal blocks, Roll, white, unlabeled, can be labeled with: THERMOMARK ROLL 2.0, THERMOMARK ROLL, THERMOMARK ROLL X1, THERMOMARK ROLLMASTER 300/600, THERMOMARK X1.2, THERMOMARK S1.1, perforated, mounting type: snapped, snap into flat marker groove, for terminal block width: 10.2 mm, lettering field size: 6.35 x 10.15 mm, Number of individual labels: 10000

TMT 10 R CUS - Marker for terminal blocks

0824500

<https://www.phoenixcontact.com/il/products/0824500>



Marker for terminal blocks, can be ordered: by line, white, labeled according to customer specifications, mounting type: snap into universal marker groove, snap into flat marker groove, for terminal block width: 10.2 mm, lettering field size: 6.35 x 10.15 mm

UT 10 BK - Feed-through terminal block

3046320

<https://www.phoenixcontact.com/il/products/3046320>

E/AL-NS 35 - End clamp

1201662

<https://www.phoenixcontact.com/il/products/1201662>



End clamp, for end support of UKH 50 to UKH 240, is pushed onto DIN rail NS 35 and fixed with 2 screws, width: 10 mm, color: aluminum

E/UK - End clamp

1201442

<https://www.phoenixcontact.com/il/products/1201442>



End clamp, material: PA, color: gray, Mounting on a DIN rail NS 32 or NS 35

UT 10 BK - Feed-through terminal block

3046320

<https://www.phoenixcontact.com/il/products/3046320>



E/UK 1 - End clamp

1201413

<https://www.phoenixcontact.com/il/products/1201413>



End clamps, for supporting the ends of double-level and three-level terminal blocks, width: 10 mm, color: gray

CLIPFIX 35 - End clamp

3022218

<https://www.phoenixcontact.com/il/products/3022218>



Quick mounting end clamp for NS 35/7,5 DIN rail or NS 35/15 DIN rail, with marking option, width: 9.5 mm, color: gray

UT 10 BK - Feed-through terminal block

3046320

<https://www.phoenixcontact.com/il/products/3046320>



CLIPFIX 35-5 - End clamp

3022276

<https://www.phoenixcontact.com/il/products/3022276>

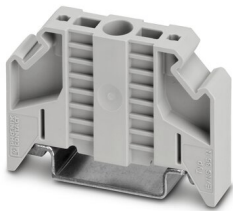


Quick mounting end clamp for NS 35/7,5 DIN rail or NS 35/15 DIN rail, with marking option, with parking option for FBS...5, FBS...6, KSS 5, KSS 6, width: 5.15 mm, color: gray

E/NS 35 N - End clamp

0800886

<https://www.phoenixcontact.com/il/products/0800886>



End clamp, width: 9.5 mm, color: gray

Phoenix Contact 2023 © - all rights reserved
<https://www.phoenixcontact.com>

PHOENIX CONTACT Israel Ltd.
P.O.B. 1799 Industrial Park Hasharon
Quadima 60920
+972-9-8915700
info@phoenixcontact.co.il