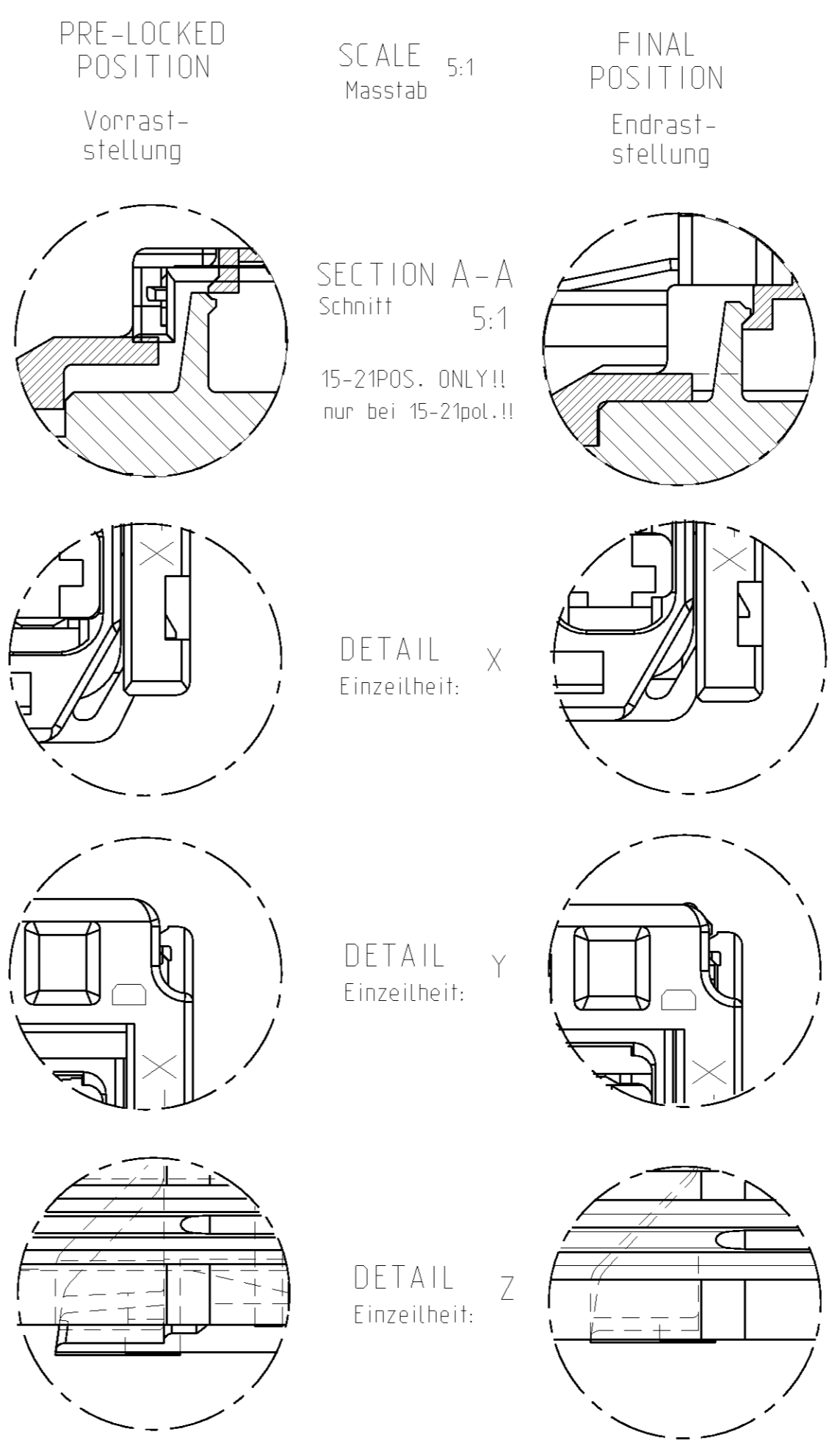


MATED WITH / Passend zu:		PROJEKT NR. / A97-52046	LOC. / A1	DIST. / -	REVISIONS			
REV.	DATE	DESCRIPTION	DATE	OWN	APPV.			
D2	09JUN2008	connection of drawing only	09JUN2008	HILD	Hassel			
D3	03MAY2011	PNs and codings F and E added.	03MAY2011	KIPS	Krauss			
D4	12JUL2011	Revision updated	12JUL2011	MN	SKR			
D5	06FEB2014	MATING CONNECTOR PN 966562 REMOVED FROM DRAWING BECAUSE PN IS SUPERSEDED	06FEB2014	Hd.	Krauss			

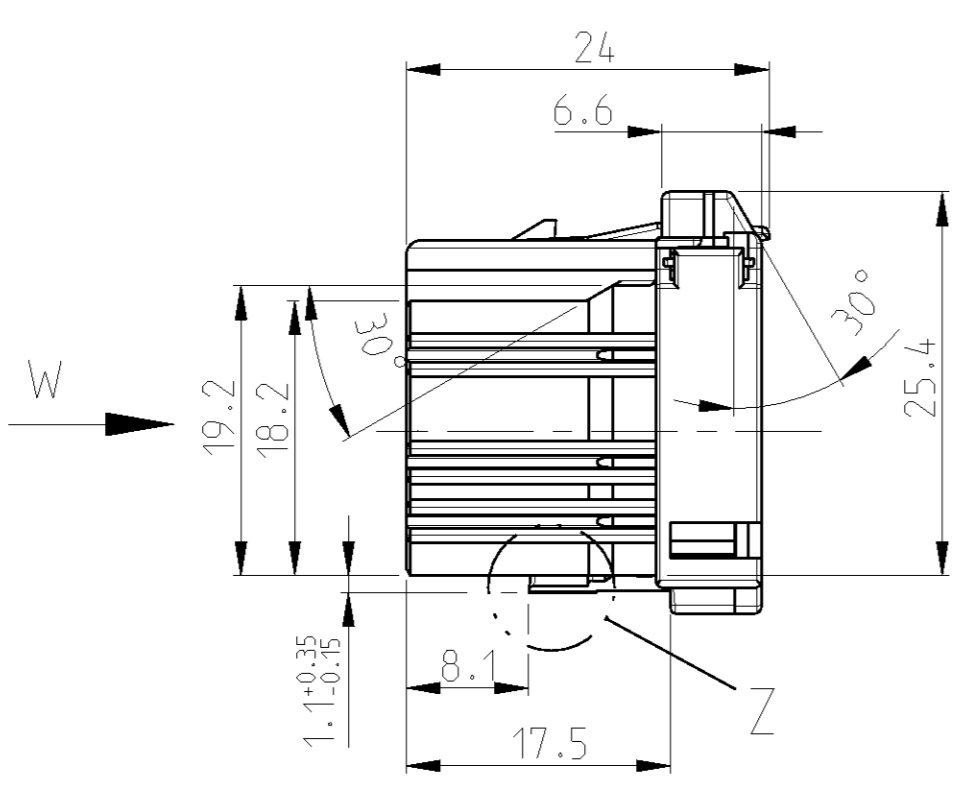
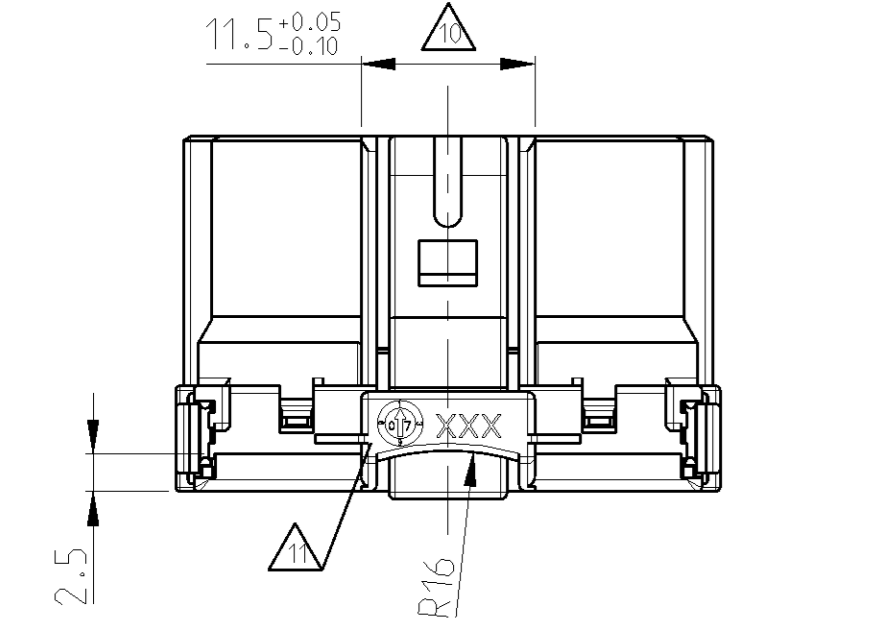
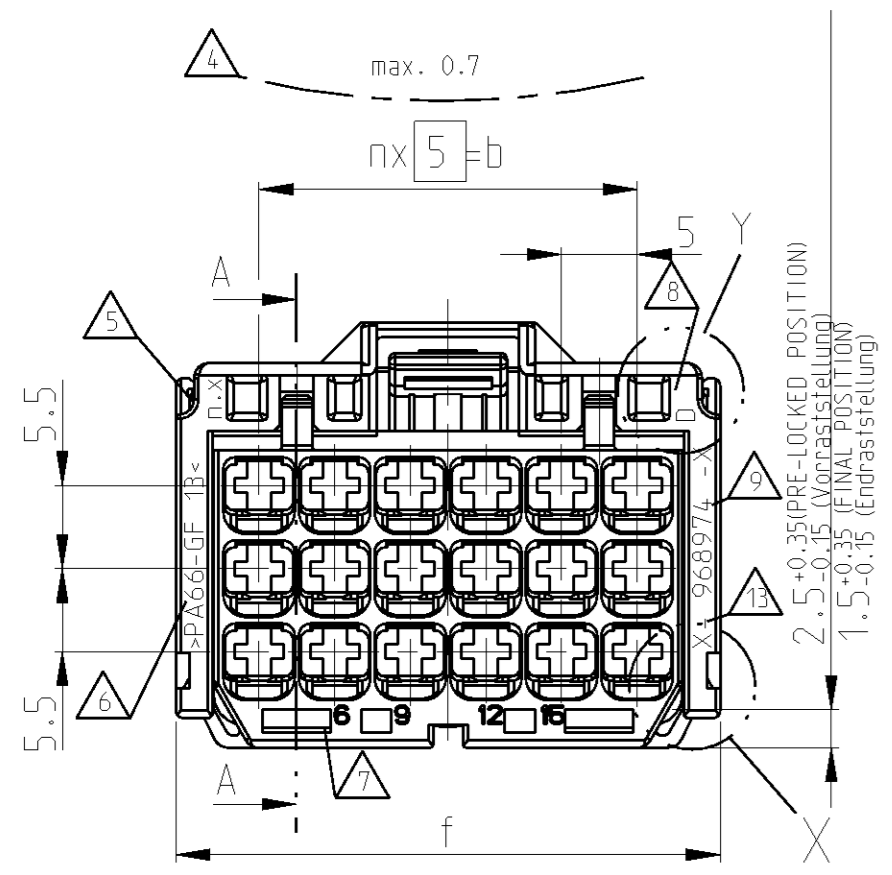
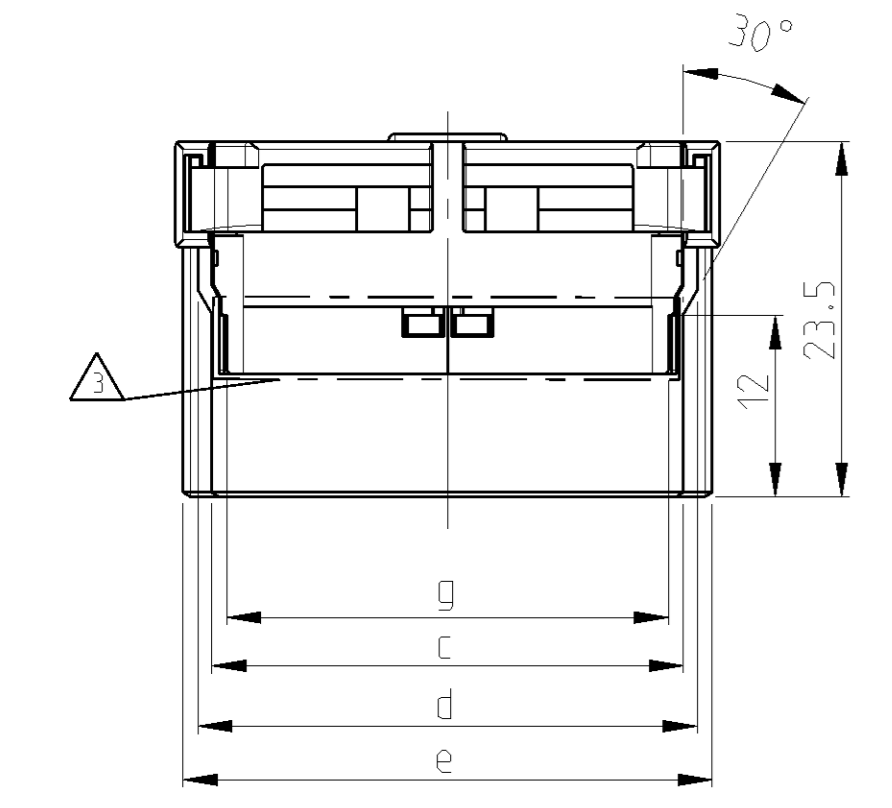
	6	30	36.2	38	39.9	41	34.2	10.0g	21
	5	25	31.2	33	34.9	36	29.2	8.8g	18
	4	20	26.2	28	29.9	31	15.5	7.7g	15
	3	15	21.2	23	24.9	26	10.5	6.6g	12
	2	10	16.2	18	19.9	21	5.5	5.4g	9
	1	5	11.2	13	14.9	16	4.5	4.2g	6
M1:1	n	b	c ^{+0.1} _{-0.3}	d ^{+0.4} _{-0.3}	e ^{+0.2} _{-0.5}	f	g±0.25	WEIGHT Gewicht	NUMBER OF WAYS Polzahl

PRE-LOCKED AND FINAL POSITION
 Vorrast- und Endraststellung

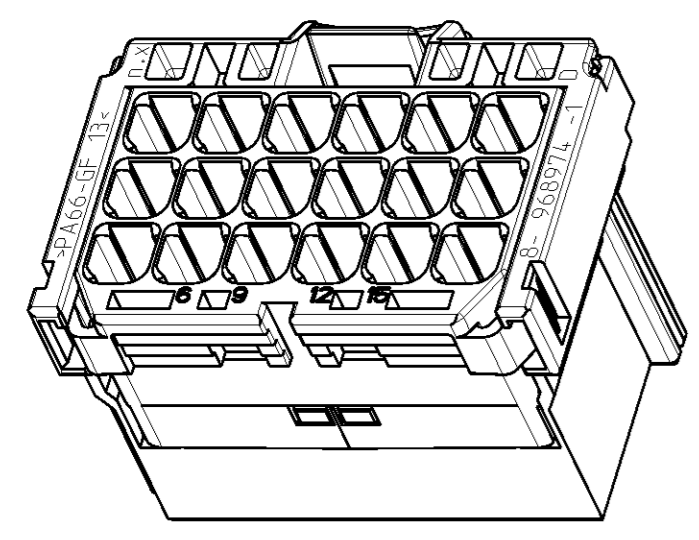
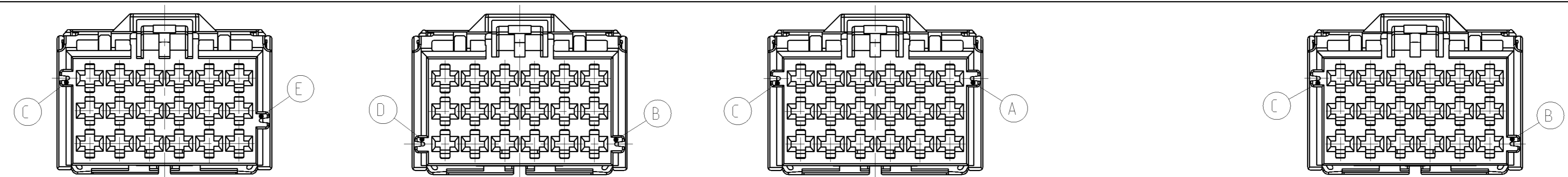
SLIDING DISTANCE: 1mm
 Verschiebeweg. 1mm



- NOTES
 Bemerkungen
- MATING CONNECTOR FOR AMP MCP 2.8 HOUSING
 SEE DRAWINGS 1355072 (TAB HOUSINGS),
 966140 (TAB HEADER)
 114-18085-025 (INTERFACE-DRAWING)
 Gegenstecker fuer AMP MCP 2.8 Gehaeuse
 siehe Zeichnungen 1355072 (Flachstecker-Gehaeuse)
 966140 (Messerleisten),
 114-18085-025 (Ausfuehrungsvorschrift)
 - CAVITIES MATING WITH AMP MCP 2.8 CONTACTS
 (WITHOUT SWS. MAX. WIRE SIZE: 2.5mm² FLR) -
 SEE PRODUCT GROUP DRAWING: 1355036
 Kontaktkammern passend fuer AMP MCP 2.8 Kontakte
 (ohne EDS. max. Leitungsquerschnitt: 2.5mm² FLR)
 - siehe Produktgruppenzeichnung : 1355036
 - DESIGN DEPENDS ON NUMBER OF WAYS
 Aussehen je nach Polzahl unterschiedlich
 - WARPAGE TO ... PERMITTED
 Verzug bis ... zulassig
 - MOULD CAVITY-MARKING = X
 SERIAL MOULD-NUMBER = n. (if n>1 only)
 Nestmarkierung = X
 Serienwerkzeug-Nr. = n (nur wenn n>1)
 - MATERIAL-MARKING ACC. TO VDA 260
 Werkstoffkennzeichnung nach
 - CAVITY-MARKING
 Kammerbezeichnung
 - THE REVISION STATUS OF THE MOULD
 Aenderungszustand des Werkzeugs
 - TE PARTNUMBER
 TE Bestell-Nr. Teil
 - WARPAGE TO 11.3 PERMITTED
 Verzug bis 11.3 zulassig
 - PRODUCTION-DATE
 Produktionsdatum
 - PACKAGING: BULK PACKAGING IN CORRUGATED BOX -
 INDICATED BY PRE-DASH-NO.s 8-, 7-, 6-, 5-;
 THESE PRE-DASH-NO.s ARE ON PART NOW:
 Verpackung: Schuetztgut in Versandkarton -
 gekennzeichnet durch Vorstrichzahlen 8-, 7-, 6-, 5-;
 diese Vorstrichzahlen sind jetzt auch am Teil!
 - MALFUNCTION CAUSED BY LACQUER IS NOT
 COVERED BY TE WARRANTY
 Funktionsbeeintraechtigung durch Lackieren liegt
 nicht im Einfluss und Gewaehrleistungsumfang von TE



8-968974-1 AS SHOWN IN PRE-LOCKED POSITION
 wie gezeichnet in Vorraststellung



3D-MODEL (18POS.; CODING A)
 2:1

CODING / Kodierung D RIB / Rippe: C-E				CODING / Kodierung C RIB / Rippe: B-D				CODING / Kodierung B RIB / Rippe: A-C				CODING / Kodierung A RIB / Rippe: B-C				MECHAN. CODING mechan. Kodierung								
①	5-968975-1	D	CLARET VIOLET Bordeauviolett		6-968975-1	D	LIGHT BLUE Lichtblau		7-968975-1	D	NATURE natur		8-968975-2	D	GREY grau		8-968975-1	D	BROWN braun	1	AMP MCP 2.8 HOUSING AMP MCP 2.8 Gehaeuse	21	POS. polig	PA66-GF13 MATERIAL werkstoff
	5-968974-1	D			6-968974-1	D			7-968974-1	D			-	-		8-968974-1	D	GREY grau	1	18		POS. polig		
	5-968973-1	D			6-968973-1	D			7-968973-1	D			8-968973-2	D	GREY grau	1	VIOLET violett	1	15	POS. polig				
	5-968972-1	D			6-968972-1	D			7-968972-1	D			8-968972-2	D	GREY grau	1	GREEN gruen	1	12	POS. polig				
	5-968971-1	D			6-968971-1	D			7-968971-1	D			8-968971-2	D	GREY grau	1	Yellow gelb	1	9	POS. polig				
	5-968970-1	D		6-968970-1	D		7-968970-1	D		8-968970-2	D	GREY grau	1	SEMPERIAN BLUE Erzblau	1	6	POS. polig							
CUSTOMER PART NO. Kunden-Teile-Nr.	TE ORDER-NO TE Bestell-Nr.	REV	COLOUR Farbe	CUSTOMER PART NO. Kunden-Teile-Nr.	TE ORDER-NO TE Bestell-Nr.	REV	COLOUR Farbe	CUSTOMER PART NO. Kunden-Teile-Nr.	TE ORDER-NO TE Bestell-Nr.	REV	COLOUR Farbe	CUSTOMER PART NO. Kunden-Teile-Nr.	TE ORDER-NO TE Bestell-Nr.	REV	COLOUR Farbe	CUSTOMER PART NO. Kunden-Teile-Nr.	TE ORDER-NO TE Bestell-Nr.	REV	COLOUR Farbe	POS.	DESCRIPTION Benennung Einzelteil	MATERIAL werkstoff		

THIS DRAWING IS A CONTROLLED DOCUMENT.

SWN: JR. Huebner 19JAN1998
 CHK: J. Hass 19JAN1998
 APPV: M. Reicher 18JAN2008

TOLERANCES UNLESS OTHERWISE SPECIFIED:
 % DIM NOM. - 30

0 PLC ±
 1 PLC ±
 2 PLC ±
 3 PLC ±
 4 PLC ±

ANGLES: ° 30°

FINISH: SEE PARTS LIST

WEIGHT: SEE TABLE

Customer Drawing

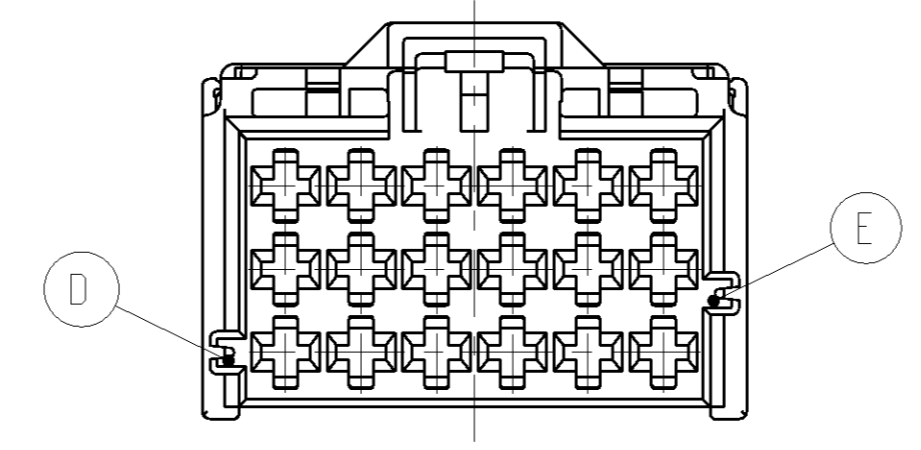
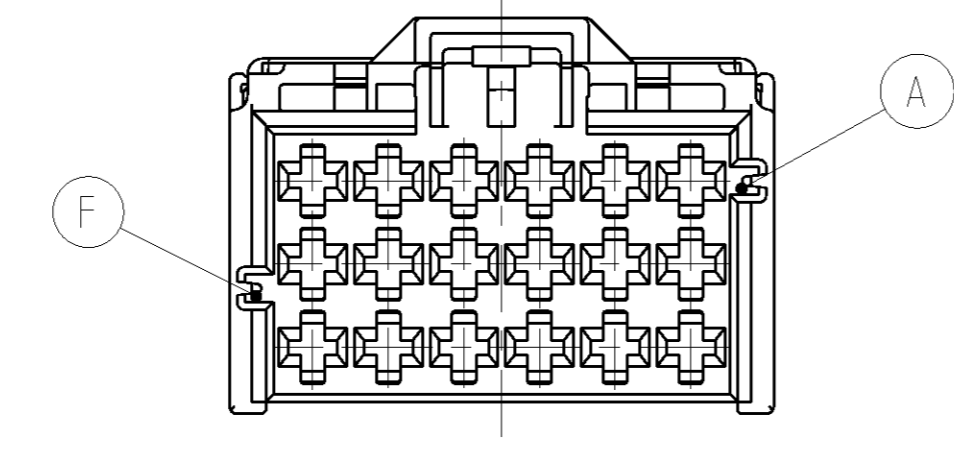
SCALE: 2:1 SHEET 1 OF 2 REV: D5

TE Connectivity

PRODUCT GROUP DRAWING FOR: AMP MCP 2.8 HSG.
 6-21POS. WITH SECONDARY LOCKING DEVICE
 Produkt-Gruppen-Zeichnung fuer: AMP MCP 2.8 Gehaeuse.
 6-21polig mit zweiter Kontaktsicherung

SIZE: CAGE CODE DRAWING NO. RESTRICTED TO
 A1 00779 ©=1355073

ADDITIONAL CODINGS / Zusätzliche Kodierungen



CODING / Kodierung F			MECHANICAL CODING: mechanische Kodierung:	DESCRIPTION Benennung Einzelteil	MATERIAL Werkstoff
RIBS / Nuten: A-F	①③	①④			
	9-968975-2	D	21 POS. pol.	PA66-GF13	
	9-968974-2	D	18 POS. pol.		
			15 POS. pol.		
	9-968972-2	D	12 POS. pol.		
			9 POS. pol.		
	9-968970-2	D	6 POS. pol.		
CUSTOMER PART NUMBER Kunden-Einzelteil-Nummer	TE ORDER-NO. TE Bestell-Nr.	REV.			

CODING / Kodierung E			MECHANICAL CODING: mechanische Kodierung:	DESCRIPTION Benennung Einzelteil	MATERIAL Werkstoff
RIBS / Nuten: E-D	①③	①④			
	4-968975-1	D	21 POS. pol.	PA66-GF13	
	4-968974-1	D	18 POS. pol.		
			15 POS. pol.		
	4-968972-1	D	12 POS. pol.		
			9 POS. pol.		
	4-968970-1	D	6 POS. pol.		
CUSTOMER PART NUMBER Kunden-Einzelteil-Nummer	TE ORDER-NO. TE Bestell-Nr.	REV.			

THIS DRAWING IS A CONTROLLED DOCUMENT.

DIMENSIONS: mm	TOLERANCES UNLESS OTHERWISE SPECIFIED: h, DR 90° ± .004	OWN R. Huebner CHK J. Hass APPV M. Reicher	19JAN1998 19JAN1998 18JAN2008	 TE Connectivity NAME PRODUCT GROUP DRAWING FOR: AMP MCP 2.8 HSG. 6-21POS. WITH SECONDARY LOCKING DEVICE Produkt-Gruppen-Zeichnung fuer: AMP MCP 2.8 Gehaeuse. 6-21polig mit zweiter Kontaktsicherung
MATERIAL SEE PARTS LIST	FINISH SEE PARTS LIST	WEIGHT SEE TABLE	Customer Drawing	

SIZE: A1 CAGE CODE: 00779 DRAWING NO: ©=1355073 RESTRICTED TO: -
 SCALE: 2:1 SHEET 2 OF 2 REV: 05