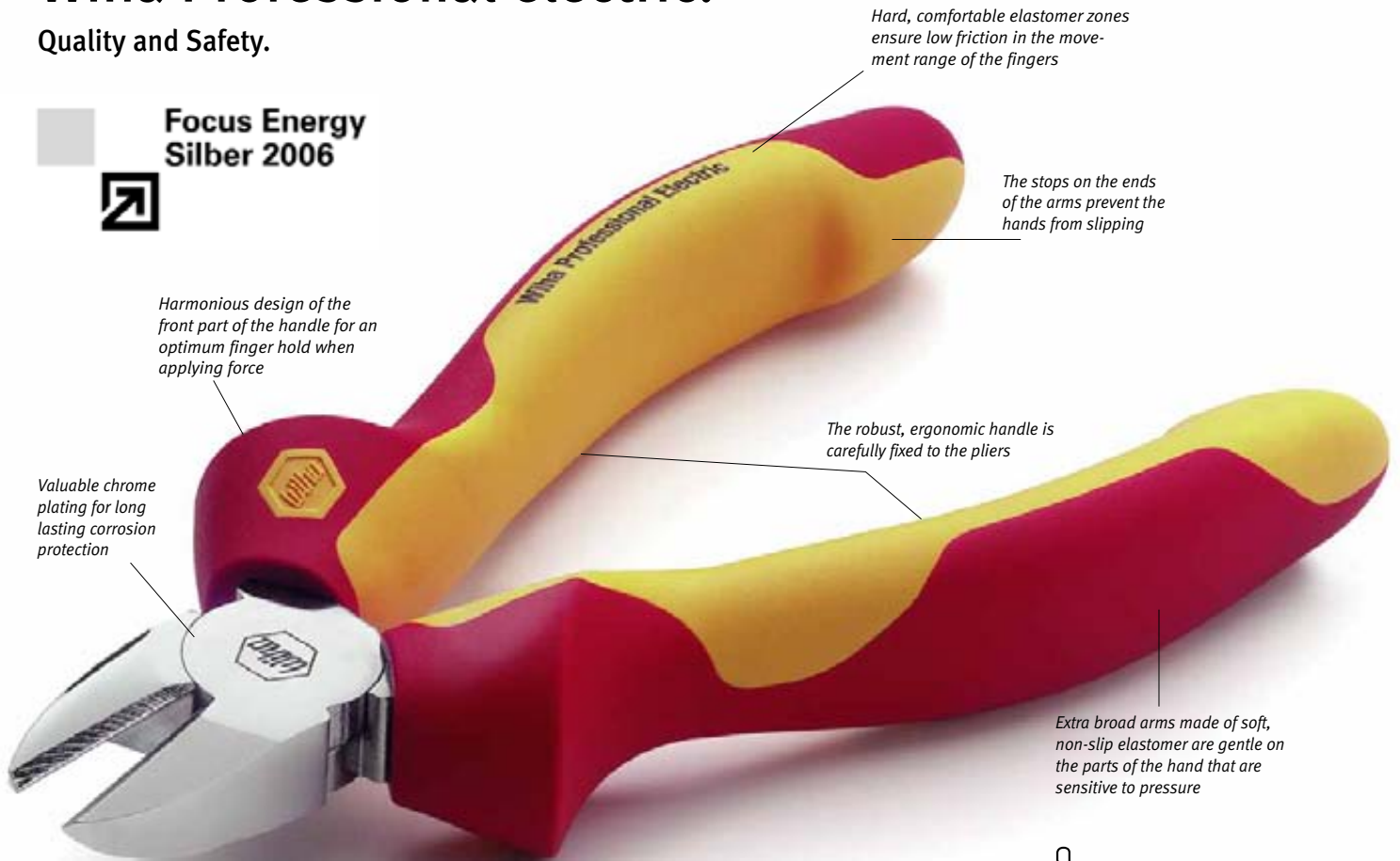


Wiha Professional electric.

Quality and Safety.



Hard, comfortable elastomer zones ensure low friction in the movement range of the fingers

The stops on the ends of the arms prevent the hands from slipping

Harmonious design of the front part of the handle for an optimum finger hold when applying force

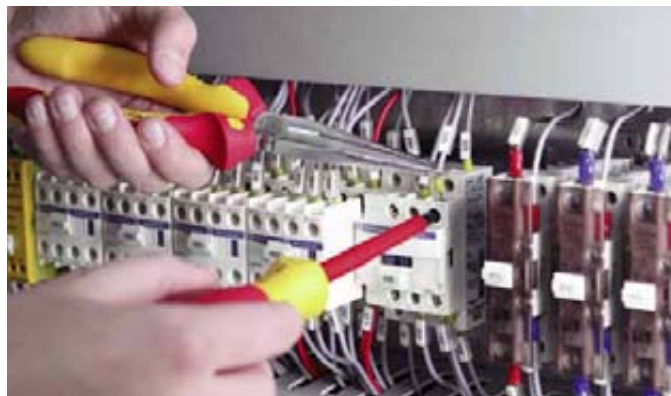
Valuable chrome plating for long lasting corrosion protection

The robust, ergonomic handle is carefully fixed to the pliers

Extra broad arms made of soft, non-slip elastomer are gentle on the parts of the hand that are sensitive to pressure



When working on or near electrically live components, the user must not only observe strict requirements but must also maintain the highest level of electrical safety: strong, thick-walled handle insulation must reliably and effectively prevent the possibility of the user of the pliers being injured by electric shocks. Wiha Professional electric pliers do this.



Must maintain the highest level of electrical safety! All Wiha Professional electric pliers meet the strict VDE requirements.

The Wiha Professional electric side-cutter has cutting geometries that, thanks to an optimum leverage ratio, enable a high separation force.



Wiha Professional electric:

- Manufactured as Wiha Professional pliers
- Also tested in accordance with EN/IEC 60900:2004 and authorised for use on parts electrically live up to 1000 V AC or 1500 V DC, taking all other safety requirements into consideration.
- Comprehensive mechanical and electrical material tests ensure that the handle insulation contains all the properties to provide maximum user safety under all conditions. Each set of pliers is then individually tested by means of a 10 000 V electric shock test
- The manufacture of all pliers is subject to regular checks by the VDE (the Association for Electrical, Electronic & Information Technologies), Offenbach
- Awarded and marked with the GS symbol for tested safety!

Safety information:

When working on or near live electrical components, the safety regulations of the VDE and trade associations, such as VDE 0105, must be observed. Whenever possible, power to electrical components should be switched off before starting work.

Wiha Professional electric.

Quality and Safety.

Combination and Stripping Pliers.



Z 01 0 06 Combination Pliers Professional electric.
Insulation 1,000 V AC, VDE-tested and with GS Mark.

Standards: DIN ISO 5746.
Head shape: Extra long cutting edge for flat and round cables. Serrated gripper jaws.
Design: Cutting edges additionally inductively hardened to approx. 60 HRC.
Material: Special tool steel, tempered.
Application: General purpose pliers for gripping and holding as well as cutting soft and hard wires and cables.
For all work on or around electrical components up to 1,000 V AC.

Order-No.	mm	II	○	●	↵	≡	£
26705 6	160	6½	3.0	2.0	210	5	13.21
26708 7	180	7	3.3	2.2	265	5	14.18
26711 7	200	8	3.6	2.5	325	5	15.93



Z 02 0 06 High Leverage Combination Pliers Professional electric.
Insulation 1,000 V AC, VDE-tested and with GS Mark.

Standards: DIN ISO 5746.
Head shape: Extra long cutting edge for flat and round cables. Serrated gripper jaws.
Design: Particularly powerful leverage results in 40% less effort being required for cutting tasks compared with standard combination pliers.
Cutting edges additionally inductively hardened to approx. 64 HRC, therefore also appropriate for cutting piano wire.
Material: C 60 Special tool steel, tempered.
Application: Power assisted general purpose pliers for gripping and holding as well as cutting wires and cables ranging in hardness from soft to extremely hard.
For all work on or around electrical components up to 1,000 V AC.

Order-No.	mm	II	○	●	●	↵	≡	£
26714 8	200	8	3.8	2.7	2.3	310	5	17.76



Z 55 0 06 Stripping Pliers Professional electric.
Insulation 1,000 V AC, VDE-tested and with GS Mark.

Standards: DIN ISO 5744.
Head shape: Precision cutting edge prism for even cutting of cable insulation.
Design: An easy to use adjusting screw allows the stripping diameter to be set.
Opening spring for effortless and sensitive handling of pliers.
Material: Special tool steel, tempered.
Application: Simple stripping of cables and strands of up to \varnothing 5 mm = 10 mm² conductor cross-section.
For all work on or around electrical components up to 1,000 V AC.

Order-No.	mm	II	↵	≡	£
26847 3	160	6½	125	5	16.98

Long-Flat and Needle Nose Pliers.



Z 05 0 06 Needle Nose Pliers Professional electric with Cutting Edge.
Insulation 1,000 V AC, VDE-tested and with GS Mark.

Standards: DIN ISO 5745.
Head shape: Straight shape.
Design: Extra long cutting edge for flat and round cables.
Gripping surfaces serrated in parts.
Cutting edges additionally inductively hardened to approx. 60 HRC.
Material: Special tool steel, tempered.
Application: Gripping and holding as well as cutting soft and hard wires and cables.
Preferred choice in the mechanical and electrical sectors.
For all work on or around electrical components up to 1,000 V AC.

Order-No.	mm	II	○	●	↵	≡	£
26720 9	160	6½	2.5	1.6	145	5	14.53
26727 8	200	8	2.8	1.8	190	5	18.11



Z 05 1 06 Needle Nose Pliers Professional electric with Cutting Edge.
Insulation 1,000 V AC, VDE-tested and with GS Mark.

Standards: DIN ISO 5745.
Head shape: Angled, approx. 40°.
Design: Extra long cutting edge for flat and round cables.
Gripping surfaces serrated in parts.
Cutting edges additionally inductively hardened to approx. 60 HRC.
Material: Special tool steel, tempered.
Application: Gripping and holding as well as cutting soft and hard wires and cables.
Preferred choice in the mechanical and electrical sectors.
For all work on or around electrical components up to 1,000 V AC.

Order-No.	mm	II	○	●	↵	≡	£
26728 5	160	6½	2.5	1.6	145	5	18.64
26729 2	200	8	2.8	1.8	190	5	20.74



Z 07 0 06 Long-flat Nose Pliers Professional electric.
Insulation 1,000 V AC, VDE-tested and with GS Mark.

Standards: DIN ISO 5745.
Head shape: Extra long head.
Design: Gripping surfaces serrated and inductively hardened.
Material: Special tool steel, tempered.
Application: Gripping and right-angled bending of wires and sheet metal parts.
For all work on or around electrical components up to 1,000 V AC.

Order-No.	mm	II	↵	≡	£
26732 2	160	6½	145	5	15.23

Round Nose Pliers and Diagonal Cutters.



Z 09 0 06 Long-round Nose Pliers Professional electric.
Insulation 1,000 V AC, VDE-tested and with GS Mark.
 Standards: DIN ISO 5745.
 Head shape: Extra long head.
 Design: Gripping surfaces serrated and inductively hardened.
 Material: Special tool steel, tempered.
 Application: Gripping and bending of wires and sheet metal parts.
 For all work on or around electrical components up to 1,000 V AC.

Order-No.	mm	mm	mm	mm	£
26735 3	160	6 1/2	140	5	15.23



Z 12 0 06 Diagonal Cutters Professional electric.
Insulation 1,000 V AC, VDE-tested and with GS Mark.
 Standards: DIN ISO 5749.
 Head shape: Semi-circular, Swedish style.
 Design: Low wear lap joint, riveted and able to withstand high loads.
 Lightweight action, clean cutting achieved by specially milled precision cutting edges. Long term cutting is achieved through additional inductive hardening to approx. 60 HRC.
 Material: Special tool steel, tempered.
 Application: Universal cutter for cutting soft and hard wires and cables, also suitable for cutting and stripping cables.
 For all work on or around electrical components up to 1,000 V AC.

Order-No.	mm	mm	mm	mm	mm	mm	mm	mm	£
26737 7	140	5 1/2	4.0	2.5	1.8	175	5	15.40	
26741 4	160	6 1/2	4.0	2.8	2.0	220	5	16.28	
26744 5	180	7	4.6	3.0	2.5	280	5	17.68	



Z 16 0 06 Heavy Duty Diagonal Cutters Professional electric.
Insulation 1,000 V AC, VDE-tested and with GS Mark.
 Standards: DIN ISO 5749.
 Head shape: Semi-circular.
 Design: Low wear lap joint, riveted and able to withstand high levels of load.
 Lightweight action, clean cutting achieved by specially milled precision cutting edges. Long term cutting is achieved through additional inductive hardening to approx. 64 HRC.
 Material: C 60 Special tool steel, tempered.
 Application: Power-assisted all-round side cutter for cutting soft to extremely hard wires and cables.
 For all work on or around electrical components up to 1,000 V AC.

Order-No.	mm	mm	mm	mm	mm	mm	mm	mm	£
26748 3	160	6 1/2	3.5	2.5	2.0	220	5	20.04	
26751 3	180	7	3.8	2.7	2.3	260	5	21.53	
26754 4	200	8	4.2	3.0	2.5	290	5	23.10	

Diagonal and Cable Cutters.



Z 14 0 06 Electrician's Diagonal Cutters Professional electric.
Insulation 1,000 V AC, VDE-tested and with GS Mark.
 Standards: DIN ISO 5749.
 Head shape: Semi-circular, Swedish style.
 Design: Low wear lap joint, riveted and able to withstand high loads.
 Lightweight action, clean cutting achieved by specially milled precision cutting edges.
 Long term cutting is achieved through additional inductive hardening to approx. 60 HRC.
 With additional boreholes in the cutting edge for stripping copper conductors ϕ 1.5 mm² and 2.5 mm².
 Material: Special tool steel, tempered.
 Application: For cutting and stripping of cables in domestic installations.
 For all work on or around electrical components up to 1,000 V AC.

Order-No.	mm	mm	mm	mm	mm	mm	mm	£
26745 2	160	6 1/2	4.0	2.5	220	5	23.36	



Z 50 0 06 Cable Cutters Professional electric.
Insulation 1,000 V AC, VDE-tested and with GS Mark.
 Standards: Manufactured acc. to EN/IEC 60900:2004.
 Head shape: Sickle shaped cutting edge to prevent cables sliding out when cutting.
 Design: Bolted, adjustable lay on joint.
 Lightweight action and clean cutting edges achieved by specially ground precision cutting edges for cutting soft cable.
 Safety lock to prevent fingers being injured after cutting. With opening spring and locking system.
 Material: Special tool steel, tempered.
 Application: Special cable cutter for copper and aluminium cables.
 Also appropriate for stripping insulation and surrounds, but not for steel cable, from wires and copper conductors with hard coatings.
 For all work on or around electrical components up to 1,000 V AC.

Order-No.	mm	mm	mm	mm ²	mm	mm	£
26842 8	170	6 1/2	12	40	330	5	26.34
26844 2	230	9	18	60	475	5	33.16

Details of cutting results of cutting pliers.

Symbol	Types of wire	Example	Tensile strength ca. N/mm ²
○	Soft wire	Copper, aluminium	220 - 250
◐	Medium hard wire	Iron nail	750 - 800
●	Hard wire	Spring wire, steel nails	1.600 - 1.800
●	Piano wire	Hardened spring steel	2.200 - 2.300

Test wires standardised in DIN ISO 5744

Wiha Professional electric.

Quality and Safety.

Cable Shears.



Z 71 1 06 Cable Shears Professional electric.

Head shape: Lightweight standard model, straight.
 Design: Standard model with wire stripper, cutting length 37 mm.
 Screw joint, adjustable cutting blades.
 Extruded plastic handle for a secure hold when cutting.
 Material: C 50 carbon steel, hardened, nickel-plated.
 Application: Universal cutter for electricians and other trades.

Order-No.	mm		↵	↵	£
27907 3	145	5¾	95	5	4.73



Z 71 2 06 Cable Shears Professional electric.

Head shape: Lightweight standard model.
 Slightly bent nose for curved cuts.
 Design: Standard model with wire stripper, cutting length 37 mm.
 Screw joint, adjustable cutting blades.
 Extruded plastic handle for a secure hold when cutting.
 Material: C 50 carbon steel, hardened, nickel-plated.
 Application: Universal cutter for electricians and other trades.

Order-No.	mm		↵	↵	£
27908 0	145	5¾	95	5	5.25



Z 71 3 06 Electrician's / Craftsman's Cutters Professional electric.

Head shape: Sturdy model, straight, very robust, micro-toothed cutting.
 Design: Precision model with wire stripper; cutting length 50 mm.
 Screw joint.
 Extruded handle made of impact-resistant plastic for powerful and safe cutting.
 Material: High-alloy carbon steel, hardened, nickel-plated.
 Application: Highly-developed universal cutter for electricians and other trades, also suitable for cutting and stripping copper cables.

Order-No.	mm		↵	↵	£
27909 7	145	5¾	120	nickel-plated	5 6.39

Cable Shears.



Z 71 4 06 Electrician's / Craftsman's Cutters Professional electric.

Head shape: Sturdy model, straight, very robust, micro-toothed cutting.
 Design: Precision model with wire stripper; cutting length 50 mm.
 Concealed, adjustable screw joint.
 Extruded handle made of impact-resistant plastic for powerful and safe cutting.
 Material: High-alloy carbon steel, hardened, black finish.
 Application: Highly-developed universal cutter for electricians and other trades, also suitable for cutting and stripping copper cables.

Order-No.	mm		↵	↵	£
27910 3	145	5¾	120	manganese-phosphated	5 6.74



Z 71 5 06 Electrician's / Craftsman's Cutters Professional electric.

Head shape: Standard model, straight, micro-toothed blade.
 Design: Particularly comfortable two-component handle with soft zone in area subject to compressive stress.
 Blade with wire cutter, cutting length 34 mm, blade hardness 56 - 58 HRC.
 Concealed, adjustable screw joint.
 Material: Blades made of stainless steel, handles made of high-quality plastics.
 Application: Comfortable universal cutter for many applications in trade and industry, also suitable for cutting and stripping cables.

Order-No.	mm		↵	↵	£
29420 5	145	5¾	60		5 7.44

Pliers Set and Tool Bag.



Z 99 0 001 06 Pliers Set Professional electric, 3 pcs.

Insulation 1,000 V AC, VDE-tested and with GS Mark.

- Design:** All pliers made of high quality tool steel, hardened, polished and chrome-plated.
Multi-component handles with slip guard for safe and comfortable operation.
Suitable for use with or near live components up to 1,000 V AC.
Individually tested for electrical safety in accordance with EN/IEC 60900:2004.
Weight 820 g.
- Content:** VDE combination pliers serie Z 01 0 06, 180 mm
VDE diagonal cutter serie Z 12 0 06, 160 mm
Needle nose pliers serie Z 05 0 06, 200 mm
- Application:** All tools suitable for use with or near live components up to 1,000 V AC.

Order-No.	Series		£
26852 7	Z 99 0 001 06	1	47.69



9300-002 Electrician's Tool Bag, 12 pcs.

- Design:** High-quality tools in practical tool bag with carrying handle.
VDE tools with insulation up to 1,000 V AC, GS-mark.
Individually tested for electrical safety in accordance with EN/IEC 60900:2004.
Bag format approx. 33 x 27 x 5.5 cm. Weight 2000 g.
- Content:** Wiha SoftFinish® electric screwdriver.
- slotted screwdriver, serie 320N: 3.5x100 / 5.5x125
- Phillips screwdriver, serie 321N: PH1 / PH2
VDE Voltage Tester 255-3
Magazine Bit Holder, insulated 380 25
XSelector 7944-904 (PH / PZ / TORX®)
VDE combination pliers serie Z 01 0 06, 180 mm
VDE diagonal cutter serie Z 12 0 06, 160 mm
VDE stripping pliers serie Z 55 0 06, 160 mm
Plastic Folding Metre Rule 1 m 41010002
Plastic Folding Metre Rule 2 m 41020002

Order-No.	Series		£
28143 4	9300-002	1	150.26

Tool Set.



Z 99 0 002 06 Tool Set Professional electric Mix, 5 pcs.

Insulation 1,000 V AC, VDE-tested and with GS Mark.

- Design:** Pliers made of high quality tool steel, hardened, polished and chrome plated.
Multi-component handles with slip guard for safe and comfortable operation.
Insulated screwdrivers.
Tips with black finish.
All tools suitable for use with or near live components up to 1,000 V AC.
Individually tested for electrical safety in accordance with EN/IEC 60900:2004.
Weight 780 g.
- Content:** Needle nose pliers serie Z 05 0 06, 200 mm
VDE diagonal cutter serie Z 12 0 06, 160 mm
Wiha SoftFinish® electric screwdriver:
- slotted screwdriver, serie 320N: 3.5x100 / 5.5x125
- Phillips screwdriver serie 321N: PH2
- Application:** The small, basic set of pliers and screwdrivers for skilled electricians.

Order-No.	Series		£
26755 1	Z 99 0 002 06	1	49.44



Wiha Professional pliers have won the "Focus in Silver" award for outstanding design. The Stuttgart Design Center awarded the Baden-Württemberg 2006 international design prize in a special energy category. Energy also determines the reference level – the key to success.

*"Focus in Silver" award
Convincing ergonomics, surface feel and clean design lines.*