

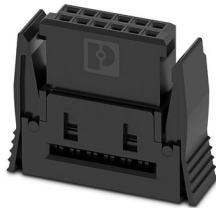
IDC female connectors - FP 1,27/ 16-FWL



1714903

<https://www.phoenixcontact.com/us/products/1714903>

Please be informed that the data shown in this PDF document is generated from our Online Catalog. Please find the complete data in the user documentation. Our General Terms of Use for Downloads are valid.



IDC female connector, nominal current: 1.2 A, Test voltage: 500 V AC, number of positions: 16, pitch: 1.27 mm, number of rows: 1, color: black, contact surface: Gold, type of contact: Female connector, For pre-assembled samples, see the "Accessories" tab.

Your advantages

- Gold-plated contacts ensure transfer quality remains stable over the long term
- Compact, high-position board-to-board or wire-to-board connectors for space-saving device designs
- Can be ordered pre-assembled: IDC female connectors with flat-ribbon cable enable immediate use in the device

Commercial Data

Item number	1714903
Packing unit	1 pc
Minimum order quantity	400 pc
Note	Made to Order (non-returnable)
Sales Key	A04
Product Key	AAXMAA
GTIN	4055626402833
Weight per Piece (including packing)	1.86 g
Weight per Piece (excluding packing)	1.757 g
Customs tariff number	85366990
Country of origin	CZ

Technical Data

Notes

Note on application	Please observe the application note on self-assembly in the download area.
Note regarding documentation	Current documents such as 3D models, products family drawings, data sheets or packaging drawings are available in the Download Center.
Notes on operation	The permissible voltage during operation depends on the application, taking into consideration the air clearances and creepage distances within the scope of insulation requirements in accordance with IEC 60664-1.

Product properties

Product type	IDC female connector
Number of positions	16
Pitch	1.27 mm
Number of rows	2
Number of potentials	16

Electrical properties

Nominal current I_N	1.2 A IEC 60512-5-2:2002-02 (at 20°C 50-pos.)
Nominal voltage U_N	AC
Degree of pollution	3
Contact resistance	10 mΩ
Test voltage	500 V AC IEC 60512-4-1:2003
Rated voltage (III/3)	500 V

Connection data

Conductor connection

Connection method	Displacement connection
Conductor cross section AWG	30

Interlock

Locking type	Snap-in locking
Mounting flange	Self-locking flange

Dimensions

Pitch	1.27 mm
Width [w]	16.32 mm
Height [h]	4.2 mm
Length [l]	13.65 mm

Application

Center offset	± 0.7 mm in longitudinal and transverse direction
Angular tolerance	± 4 ° in longitudinal direction

IDC female connectors - FP 1,27/ 16-FWL



1714903

<https://www.phoenixcontact.com/us/products/1714903>

± 2 ° in transverse direction

Material specifications

Material data - contact

Note	WEEE/RoHS-compliant, free of whiskers according to IEC 60068-2-82/JEDEC JESD 201
Contact material	Cu alloy
Surface characteristics	Selective coating
Metal surface contact area (top layer)	Gold (Au)
Metal surface contact area (middle layer)	Nickel (Ni) Palladium nickel, (PdNi)

Material data - housing

Housing color	black (9005)
Insulating material	LCP
Insulating material group	IIIb
CTI according to IEC 60112	175
Flammability rating according to UL 94	V0

Connector

Connection 1

Insulating material	LCP
CTI according to IEC 60112	175

Electrical tests

Thermal test | Test group C

Specification	IEC 60512-5-2:2002-02
Tested number of positions	50

Insulation resistance

Specification	IEC 60512-3-1:2002-02
Insulation resistance, neighboring positions	≥ 10 GΩ

Air clearances and creepage distances |

Insulating material group	IIIb
Rated insulation voltage (III/3)	500 V
Rated insulation voltage (II/2)	10 V
Rated surge voltage (II/2)	0.8 kV

Mechanical tests

Insertion and withdrawal forces

Result	Test passed
No. of cycles	500
Insertion strength per pos. approx.	0.5 N
Withdraw strength per pos. approx.	0.5 N

IDC female connectors - FP 1,27/ 16-FWL



1714903

<https://www.phoenixcontact.com/us/products/1714903>

Resistance of inscriptions

Specification	IEC 60068-2-70:1995-12
Result	Test passed

Visual inspection

Specification	IEC 60512-1-1:2002-02
Result	Test passed

Dimension check

Specification	IEC 60512-1-2:2002-02
Result	Test passed

Environmental and real-life conditions

Vibration test

Specification	IEC 60068-2-6:2007-12
Frequency	10 - 2000 - 10 Hz
Sweep speed	1 octave/min
Amplitude	1.5 mm (10 - 60.1 Hz)
Sweep speed	20g (60.1 - 2000 Hz)
Test duration per axis	2.5 h

Durability test

Specification	IEC 60512-9-1:2010-03 (following)
Impulse withstand voltage at sea level	0.8 kV
Contact resistance R_1	10 m Ω
Contact resistance R_2	10 m Ω
Insertion/withdrawal cycles	500
Insulation resistance, neighboring positions	≥ 10 G Ω

Climatic test

Specification	IEC 60512-11-7:2003-05
Corrosive stress	Method 1, 10 days
Power-frequency withstand voltage	500 V AC

Shocks

Specification	IEC 60068-2-27:2008-02
Pulse shape	Semi-sinusoidal
Acceleration	50g
Shock duration	11 ms
Test directions	X-, Y- and Z-axis (pos. and neg.)

Ambient conditions

Ambient temperature (operation)	-55 °C ... 125 °C
Ambient temperature (storage/transport)	-40 °C ... 70 °C
Relative humidity (storage/transport)	30 % ... 70 %
Ambient temperature (assembly)	-5 °C ... 100 °C

IDC female connectors - FP 1,27/ 16-FWL

1714903

<https://www.phoenixcontact.com/us/products/1714903>



Packaging specifications

Type of packaging	Tray
-------------------	------

IDC female connectors - FP 1,27/ 16-FWL


1714903

<https://www.phoenixcontact.com/us/products/1714903>



Approvals

 cULus Recognized Approval ID: E118976-20170331				
	Nominal Voltage U _N	Nominal Current I _N	Cross Section AWG	Cross Section mm ²
			-	-

 EAC Approval ID: B.00511/19	
-------------------------------------------------------------------------------------------------------------------------	--

IDC female connectors - FP 1,27/ 16-FWL



1714903

<https://www.phoenixcontact.com/us/products/1714903>

Classifications

ECLASS

ECLASS-9.0	27440309
ECLASS-10.0.1	27440309
ECLASS-11.0	27460202

ETIM

ETIM 8.0	EC002638
----------	----------

UNSPSC

UNSPSC 21.0	39121400
-------------	----------

IDC female connectors - FP 1,27/ 16-FWL



1714903

<https://www.phoenixcontact.com/us/products/1714903>

Environmental Product Compliance

China RoHS	Environmentally friendly use period: unlimited = EFUP-e
	No hazardous substances above threshold values

IDC female connectors - FP 1,27/ 16-FWL



1714903

<https://www.phoenixcontact.com/us/products/1714903>

Accessories

IDC female connectors

IDC female connectors - SAMPLE FP 1,27/16-FWL-11/P/0,1 - 1095387

<https://www.phoenixcontact.com/us/products/1095387>

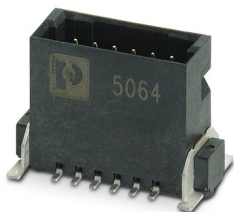


Assembled IDC female connector, rated current: 1.2 A, Cable 1: cable length: 0.1 m, Cable type: Flat-ribbon conductor, Flat-ribbon conductor

SMD male connectors

SMD male connectors - FP 1,27/ 16-MV 3,25 - 1714925

<https://www.phoenixcontact.com/us/products/1714925>



SMD male connector, nominal current: 1.4 A, Test voltage: 500 V AC, number of positions: 16, pitch: 1.27 mm, color: black, contact surface: Gold, type of contact: Male connector, mounting: SMD soldering

IDC female connectors - FP 1,27/ 16-FWL



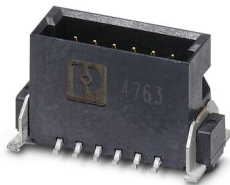
1714903

<https://www.phoenixcontact.com/us/products/1714903>

SMD male connectors

SMD male connectors - FP 1,27/ 16-MV 1,75 - 1714936

<https://www.phoenixcontact.com/us/products/1714936>



SMD male connector, nominal current: 1.4 A, Test voltage: 500 V AC, number of positions: 16, pitch: 1.27 mm, color: black, contact surface: Gold, type of contact: Male connector, mounting: SMD soldering

SMD male connectors

SMD male connectors - FP 1,27/ 16-MH - 1714914

<https://www.phoenixcontact.com/us/products/1714914>



SMD male connector, nominal current: 1.4 A, Test voltage: 500 V AC, number of positions: 16, pitch: 1.27 mm, color: black, contact surface: Gold, type of contact: Male connector, mounting: SMD soldering

Phoenix Contact 2022 © - all rights reserved
<https://www.phoenixcontact.com>

Phoenix Contact USA
586 Fulling Mill Road
Middletown, PA 17057, United States
(+717) 944-1300
info@phoenixcon.com