

IEC Appliance Inlet C14 or C18 with Filter, ECO design, Front- or Rear Side Mounting



Front side mounting with plastic flange



Snap-in mounting
Quick connect terminals 6.3 x 0.8 mm
Protection class II



Screw-on mounting
with wires (stranded)



See below:
[Approvals and Compliances](#)

Description

- Panel mount :
Screw-on version from front or rear side, snap-in version from front side, PCB Version from rear side
- 2 Functions :
Appliance Inlet protection class I or II , Line filter in standard and medical version
- Solder, quick connect or wire (stranded)
- PCB Mounting
- Earth Terminal

Unique Selling Proposition

- Various variants
- Metal flange for optimal shielding
- Compact design
- Variants for protection class I and II

Characteristics

- Compact high performance filter
- Optimal shielding due to completely closed filter case, unpotted
- Suitable for assembly in metal plated plastic housings
- Suitable for use in equipment according to IEC/UL 60950
- Suitable for use in medical equipment according to IEC/UL 60601-1

Other versions on request

- Snap-in for panel thickness >2mm to 3mm
- flexible wire with various lengths
- Class X1- and Y1-capacitors for enhanced withstand voltage
- Medical version M80
- Variant with notch for V-Lock mating Cordsets

References

Alternative: version without line filter [6100-3](#); [6100-4](#); [6102-3](#); [6102-5](#)

Weblinks

[pdf datasheet](#), [html-datasheet](#), [General Product Information](#), [Distributor-Stock-Check](#), [Accessories](#), [Detailed request for product](#), [Landing Page](#)

Newly available variants corresponding to V-Lock mating cordset. The connector is equipped with a notch intended for use with the latching cordset. The cord latching system prevents against accidental removal of the cordset.

Technical Data

| | |
|---------------------------------|--|
| Ratings IEC | 1 - 10A @ Ta 40 °C / 250VAC; 50Hz |
| Ratings UL/CSA | 1 - 15A @ Ta 40 °C / 250VAC; 60Hz |
| Leakage Current | standard < 0.5mA (250 V / 60 Hz) medical < 5 µA (250 V / 60 Hz) |
| Dielectric Strength | > 1.7 kVDC between L-N > 2.7 kVDC between L/N-PE Test voltage (2 sec) |
| Allowable Operation Temperature | -25 °C to 85 °C |
| Climatic Category | 25/085/21 acc. to IEC 60068-1 |
| IP-Protection | from front side IP 40 acc. to IEC 60529 |
| Protection Class | Suitable for appliances with protection class I or II acc. to IEC 61140 |
| Terminal | Quick connect terminals 6.3 x 0.8 mm Solder terminals Flexible wire AWG18 (15A AWG16), 150 mm |
| Panel Thickness S | Screw with plastic flange: max 8mm Mounting screw torque max 0.5Nm Snap-in: 0.8mm to 2mm (all steps with one variant) |
| Material: Housing | Thermoplast / steel tin-plated, black / metallic, UL 94V-0 |

| | |
|-------------------------|--|
| appliance inlet/-outlet | C14 / C18 acc. to IEC 60320-1, UL 498, CSA C22.2 no. 42 (for cold conditions) pin-temperature 70 °C, 10A, Protection Class I or II |
| Line Filter | Standard and Medical Version, IEC 60939, UL 1283, CSA C22.2 no. 8 Technical Details |
| MTBF | > 3'000'000h acc. to MIL-HB-217 F |




Approvals and Compliances

Detailed information on product approvals, code requirements, usage instructions and detailed test conditions can be looked up in [Details about Approvals](#)

Approvals







The approval mark is used by the testing authorities to certify compliance with the safety requirements placed on electronic products.

Approval Reference Type: 5120

| Approval Logo | Certificates | Certification Body | Description |
|--|---------------|--------------------|------------------------------|
|  | VDE Approvals | VDE | Certificate Number: 40016382 |
|  | UL Approvals | UL | UL File Number: E72928 |
|  | CQC Approvals | CQC | CQC File Number: |



Product standards

Product standards that are referenced

| Organization | Design | Standard | Description |
|--|-----------------------|------------------|---|
|  | Designed according to | IEC 60320-1 | Appliance couplers for household and similar general purposes |
|  | Designed according to | IEC 60939 | Passive filters for suppressing electromagnetic interference |
|  | Designed according to | UL 498 | Standard for Attachment Plugs and Receptacles |
|  | Designed according to | UL 1283 | Electromagnetic interference filters |
|  | Designed according to | CSA C22.2 no. 42 | General Use Receptacles, Attachment Plugs, and Similar Wiring Devices |
|  | Designed according to | CSA C22.2 no. 8 | Electromagnetic interference (EMI) filters |







Application standards

Application standards where the product can be used

| Organization | Design | Standard | Description |
|--|--------------------------------|--------------|--|
|  | Designed for applications acc. | IEC/UL 60950 | IEC 60950-1 includes the basic requirements for the safety of information technology equipment. |
|  | Designed for applications acc. | IEC 60601-1 | Medical electrical equipment - Part 1: General requirements for basic safety and essential performance |

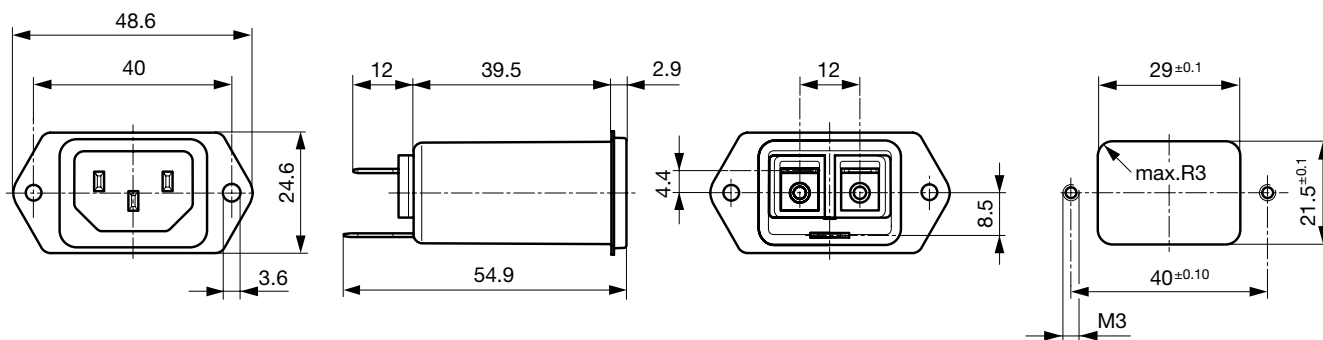
Compliances

The product complies with following Guide Lines

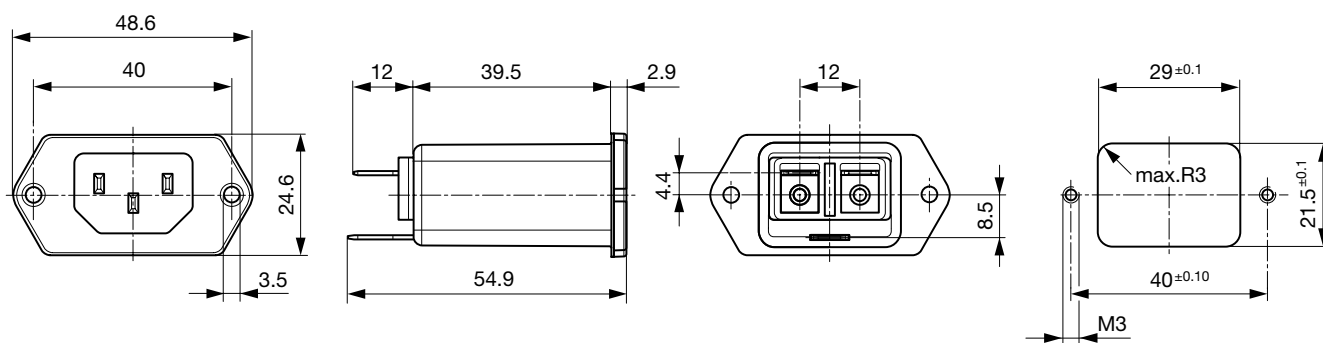
| Identification | Details | Initiator | Description |
|--|------------------------------|-------------|--|
|  | CE declaration of conformity | SCHURTER AG | The CE marking declares that the product complies with the applicable requirements laid down in the harmonisation of Community legislation on its affixing in accordance with EU Regulation 765/2008. |
|  | RoHS | SCHURTER AG | EU Directive RoHS 2011/65/EU |
|  | China RoHS | SCHURTER AG | The law SJ / T 11363-2006 (China RoHS) has been in force since 1 March 2007. It is similar to the EU directive RoHS. |
|  | REACH | SCHURTER AG | On 1 June 2007, Regulation (EC) No 1907/2006 on the Registration, Evaluation, Authorization and Restriction of Chemicals 1 (abbreviated as "REACH") entered into force. |
|  | | SCHURTER AG | V-Lock system are based on a matching plug-dose combination. The connector is equipped with a notch intended for use with the latching cordset. The cord latching system prevents against accidental removal of the cordset. |
|  | Medical Equipment | SCHURTER AG | Suitable for use in medical equipment according to IEC/UL 60601-1 |

Dimensions [mm]

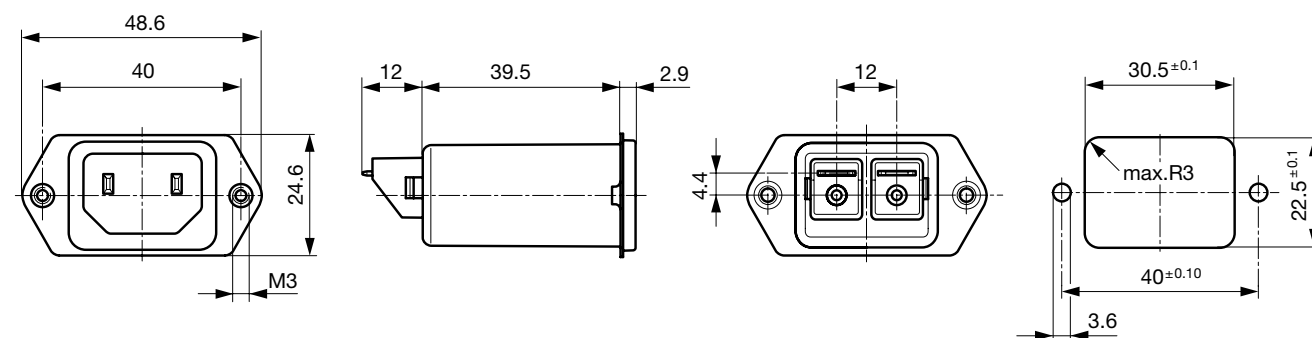
Front or rear side mounting for screws with nuts or blind rivets (panel cutout for frontside mounting)



Front side mounting with plastic flange

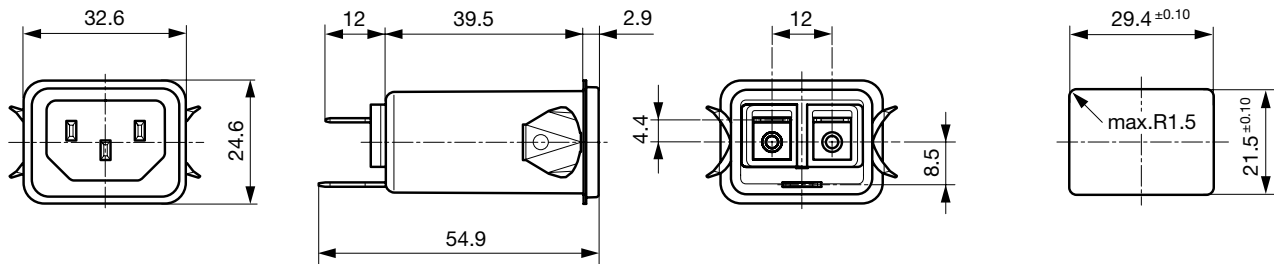


Rear side mounting with pre-formed, threaded holes for M3 screws (panel cutout for rear side mounting)



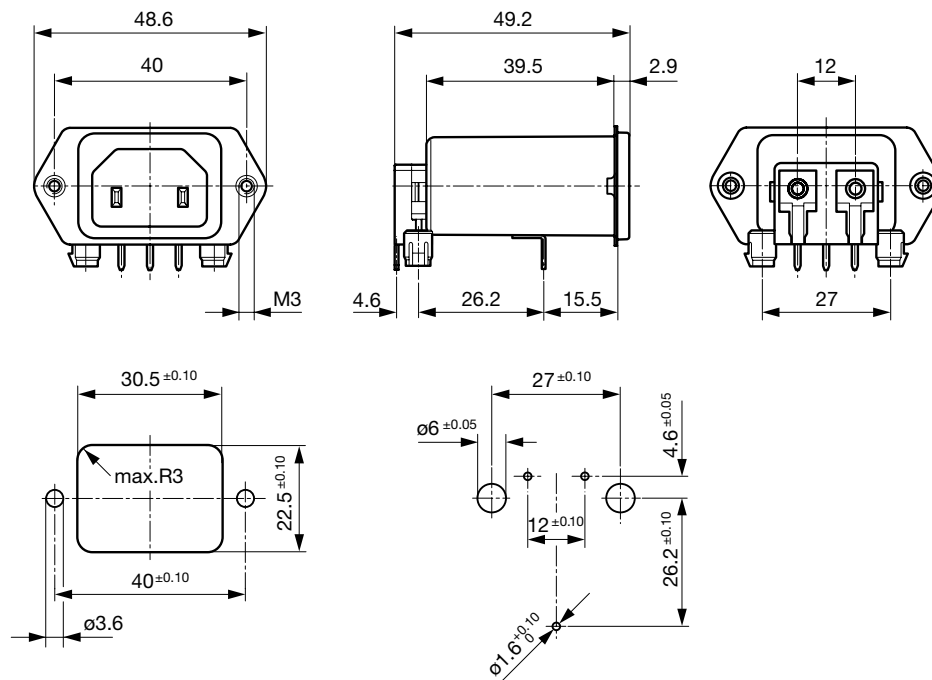
Dimensions for class II version also apply to class I

Snap-in mounting from front side

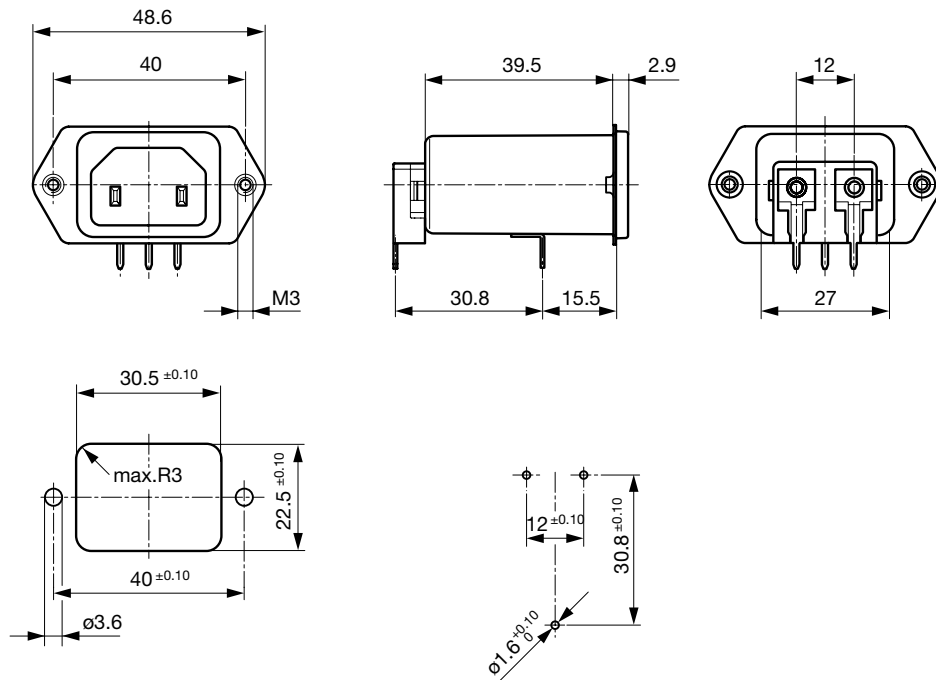


Dimensions for class I version also apply class II

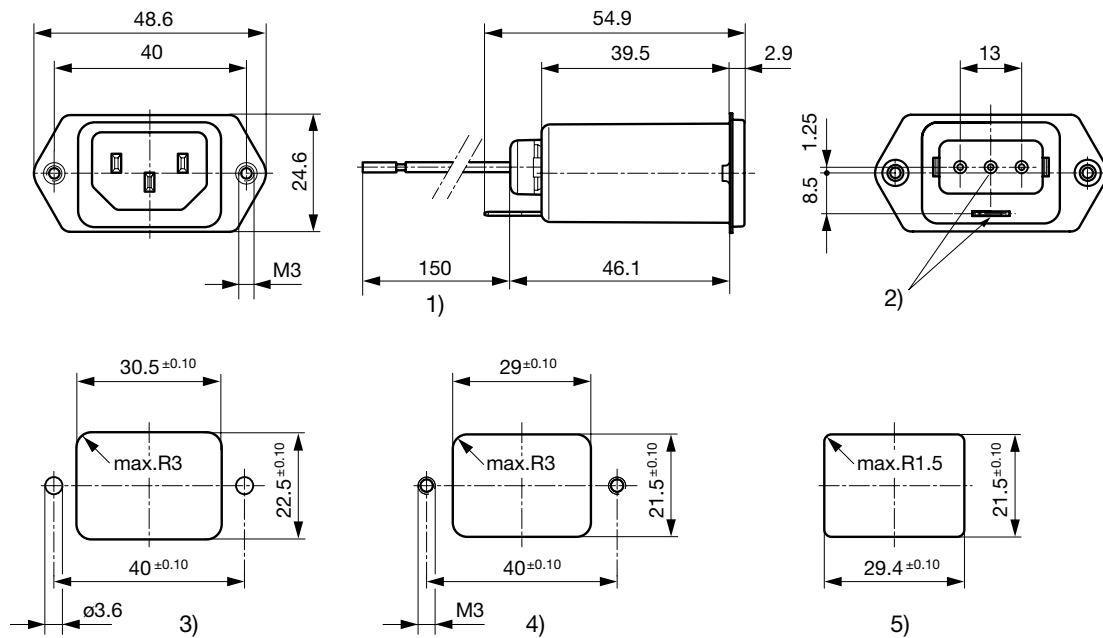
PCB snap-in rear side mounting, protection class II



PCB rear side mounting, protection class II



Screw and snap-in mounting with flexible wire



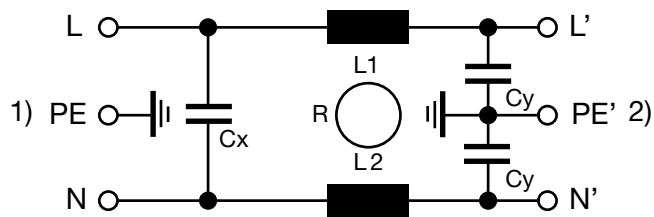
- 1) Flexible wire, standard length 150 mm or special length on request
- 2) Nonexistent for protection class II
- 3) Panel cut-out screw-on version, back-side mounting
- 4) Panel cut-out screw-on version, front- or back-side mounting
- 5) Panel cut-out snap-in version, front-side mounting

Technical Data of Filter-Components

| Rated Current [A] | Filter-Type | Inductances L [mH] | Capacitance CX [nF] | Capacitance CY [nF] | R [MΩ] |
|----------------------|------------------------|-----------------------|------------------------|------------------------|--------|
| 1 | Standard Version | 2 x 12 | 100 | 2.2 | - |
| 2 | Standard Version | 2 x 5.2 | 100 | 2.2 | - |
| 4 | Standard Version | 2 x 2 | 100 | 2.2 | - |
| 6 | Standard Version | 2 x 0.8 | 100 | 2.2 | - |
| 10 | Standard Version | 2 x 0.4 | 100 | 2.2 | - |
| 15 | Standard Version | 2 x 0.1 | 100 | 2.2 | - |
| 1 | Medical Version (M5) | 2 x 12 | 100 | - | 1 |
| 2 | Medical Version (M5) | 2 x 5.2 | 100 | - | 1 |
| 4 | Medical Version (M5) | 2 x 2 | 100 | - | 1 |
| 6 | Medical Version (M5) | 2 x 0.8 | 100 | - | 1 |
| 10 | Medical Version (M5) | 2 x 0.4 | 100 | - | 1 |
| 15 | Medical Version (M5) | 2 x 0.1 | 100 | - | 1 |
| 1 | Bleed Resistor Version | 2 x 12 | 100 | 2.2 | 1 |
| 2 | Bleed Resistor Version | 2 x 5.2 | 100 | 2.2 | 1 |
| 4 | Bleed Resistor Version | 2 x 2 | 100 | 2.2 | 1 |
| 6 | Bleed Resistor Version | 2 x 0.8 | 100 | 2.2 | 1 |
| 10 | Bleed Resistor Version | 2 x 0.4 | 100 | 2.2 | 1 |
| 15 | Bleed Resistor Version | 2 x 0.1 | 100 | 2.2 | 1 |

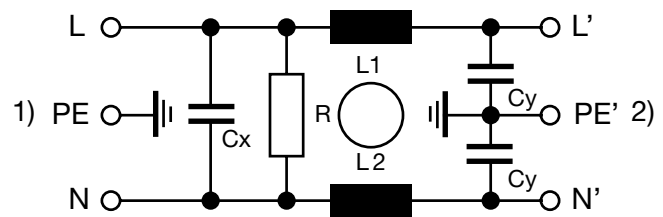
Diagrams

Standard version



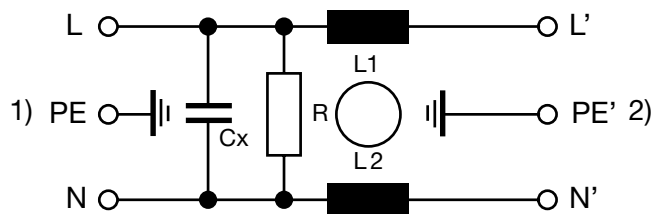
1) Line
2) Load

Bleed resistor version / medical version M80



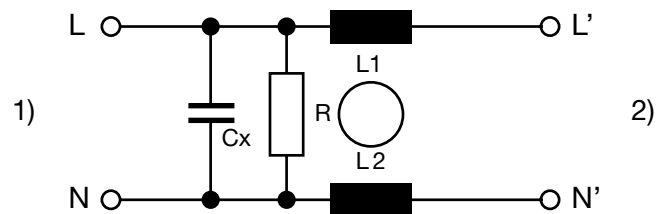
1) Line
2) Load

Medical version M5



1) Line
2) Load

Medical version M5, prot. class II



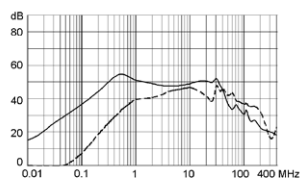
1) Line
2) Load

Attenuation Loss

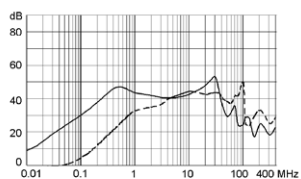
Standard version

--- 50Ω differential mode ____ 50Ω common mode

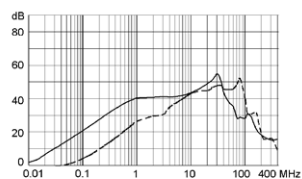
1 A



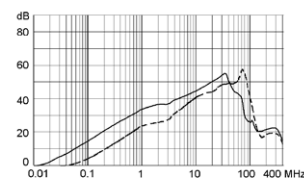
2 A



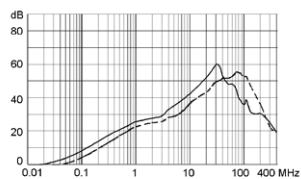
4 A



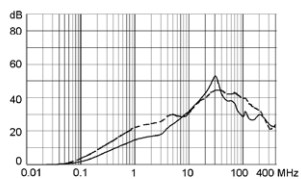
6 A



10 A

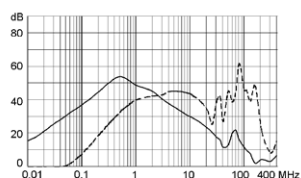


15 A

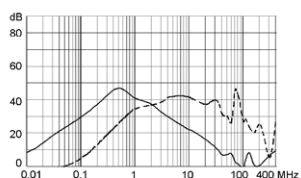


Medical version (M5)

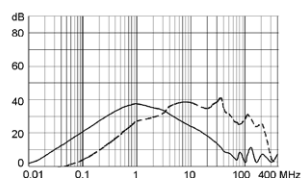
1 A



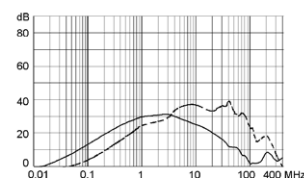
2 A



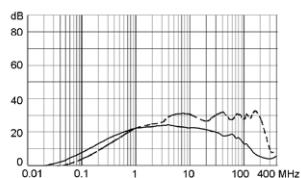
4 A



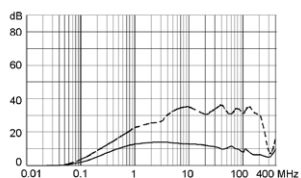
6 A



10 A



15 A



All Variants

| Rated Current [A] | Filter-Type | Mounting | Mounting side | Terminal | Protection Class | V-Lock | Order Number |
|-------------------|------------------|------------------|---------------|---------------------------------------|------------------|--------|-----------------------------|
| 6 | Standard Version | Snap-in 2 - 3 mm | Front Side | Flexible wire AWG18 | I | | 5120.3034.0 |
| 1 | Standard Version | Snap-in | Front Side | Quick connect terminals 6.3 x 0.8 mm | I | | 5120.2000.0 |
| 2 | Standard Version | Snap-in | Front Side | Quick connect terminals 6.3 x 0.8 mm | I | | 5120.2001.0 |
| 4 | Standard Version | Snap-in | Front Side | Quick connect terminals 6.3 x 0.8 mm | I | | 5120.2003.0 |
| 6 | Standard Version | Snap-in | Front Side | Quick connect terminals 6.3 x 0.8 mm | I | | 5120.2004.0 |
| 10 | Standard Version | Snap-in | Front Side | Quick connect terminals 6.3 x 0.8 mm | I | | 5120.2006.0 |
| 10 | Standard Version | Snap-in | Front Side | Flexible wire and Earth pin 6.3 x 0.8 | I | | 5120.2046.0 |

| Rated Current [A] | Filter-Type | Mounting | Mounting side | Terminal | Protection Class | V-Lock | Order Number |
|-------------------|------------------|---------------------------|------------------|--------------------------------------|------------------|--------|--------------|
| 15 | Standard Version | Snap-in | Front Side | Quick connect terminals 6.3 x 0.8 mm | I | | 5120.2007.0 |
| 1 | Standard Version | Screw/PCB snap-in | Rear Side | PCB pin and earth pin 6.3 x 0.8 | I | ● | 5120.5070.0 |
| 2 | Standard Version | Screw/PCB snap-in | Rear Side | PCB pin and earth pin 6.3 x 0.8 | I | | 5120.5071.0 |
| 4 | Standard Version | Screw/PCB snap-in | Rear Side | PCB pin and earth pin 6.3 x 0.8 | I | | 5120.5073.0 |
| 6 | Standard Version | Screw/PCB snap-in | Rear Side | PCB pin and earth pin 6.3 x 0.8 | I | | 5120.5074.0 |
| 10 | Standard Version | Screw/PCB snap-in | Rear Side | PCB pin and earth pin 6.3 x 0.8 | I | | 5120.5076.0 |
| 15 | Standard Version | Screw/PCB snap-in | Rear Side | PCB pin and earth pin 6.3 x 0.8 | I | | 5120.5077.0 |
| 1 | Standard Version | Screw/PCB | Rear Side | PCB pin and earth pin 6.3 x 0.8 | I | | 5120.4070.0 |
| 2 | Standard Version | Screw/PCB | Rear Side | PCB pin and earth pin 6.3 x 0.8 | I | | 5120.4071.0 |
| 4 | Standard Version | Screw/PCB | Rear Side | PCB pin and earth pin 6.3 x 0.8 | I | | 5120.4073.0 |
| 6 | Standard Version | Screw/PCB | Rear Side | PCB pin and earth pin 6.3 x 0.8 | I | | 5120.4074.0 |
| 10 | Standard Version | Screw/PCB | Rear Side | PCB pin and earth pin 6.3 x 0.8 | I | | 5120.4076.0 |
| 15 | Standard Version | Screw/PCB | Rear Side | PCB pin and earth pin 6.3 x 0.8 | I | | 5120.4077.0 |
| 1 | Standard Version | Screw-on/Rivet | Front-/Rear-Side | Quick connect terminals 6.3 x 0.8 mm | I | | 5120.0000.0 |
| 1 | Standard Version | Screw-on/Rivet | Front-/Rear-Side | Solder terminals | I | | 5120.0010.0 |
| 2 | Standard Version | Screw-on/Rivet | Front-/Rear-Side | Quick connect terminals 6.3 x 0.8 mm | I | | 5120.0001.0 |
| 4 | Standard Version | Screw-on/Rivet | Front-/Rear-Side | Quick connect terminals 6.3 x 0.8 mm | I | | 5120.0003.0 |
| 6 | Standard Version | Screw-on/Rivet | Front-/Rear-Side | Quick connect terminals 6.3 x 0.8 mm | I | | 5120.0004.0 |
| 10 | Standard Version | Screw-on/Rivet | Front-/Rear-Side | Quick connect terminals 6.3 x 0.8 mm | I | | 5120.0006.0 |
| 15 | Standard Version | Screw-on/Rivet | Front-/Rear-Side | Quick connect terminals 6.3 x 0.8 mm | I | | 5120.0007.0 |
| 15 | Standard Version | Screw-on/Rivet | Front-/Rear-Side | Flexible wire AWG16 | I | | 5120.0057.0 |
| 1 | Standard Version | Screw with plastic flange | Front Side | Quick connect terminals 6.3 x 0.8 mm | I | ● | 3-101-140 |
| 2 | Standard Version | Screw with plastic flange | Front Side | Quick connect terminals 6.3 x 0.8 mm | I | ● | 3-101-141 |
| 4 | Standard Version | Screw with plastic flange | Front Side | Quick connect terminals 6.3 x 0.8 mm | I | ● | 3-101-142 |
| 6 | Standard Version | Screw with plastic flange | Front Side | Quick connect terminals 6.3 x 0.8 mm | I | ● | 3-101-143 |
| 10 | Standard Version | Screw with plastic flange | Front Side | Quick connect terminals 6.3 x 0.8 mm | I | ● | 3-100-776 |
| 15 | Standard Version | Screw with plastic flange | Front Side | Quick connect terminals 6.3 x 0.8 mm | I | ● | 3-101-144 |
| 1 | Standard Version | Screw | Rear Side | Quick connect terminals 6.3 x 0.8 mm | I | | 5120.1000.0 |
| 2 | Standard Version | Screw | Rear Side | Quick connect terminals 6.3 x 0.8 mm | I | | 5120.1001.0 |
| 4 | Standard Version | Screw | Rear Side | Quick connect terminals 6.3 x 0.8 mm | I | | 5120.1003.0 |

| Rated Current [A] | Filter-Type | Mounting | Mounting side | Terminal | Protection Class | V-Lock | Order Number |
|-------------------|----------------------|---------------------------|------------------|---------------------------------------|------------------|--------|----------------|
| 6 | Standard Version | Screw | Rear Side | Quick connect terminals 6.3 x 0.8 mm | I | | 5120.1004.0 |
| 10 | Standard Version | Screw | Rear Side | Quick connect terminals 6.3 x 0.8 mm | I | | 5120.1006.0 |
| 10 | Standard Version | Screw | Rear Side | Quick connect terminals 6.3 x 0.8 mm | I | ● | 5120.1006.0.21 |
| 10 | Standard Version | Screw | Rear Side | Flexible wire and Earth pin 6.3 x 0.8 | I | | 5120.1046.0 |
| 15 | Standard Version | Screw | Rear Side | Quick connect terminals 6.3 x 0.8 mm | I | | 5120.1007.0 |
| 15 | Standard Version | Screw | Rear Side | Quick connect terminals 6.3 x 0.8 mm | I | ● | 5120.1007.0.21 |
| 1 | Medical Version (M5) | Snap-in | Front Side | Quick connect terminals 6.3 x 0.8 mm | I | | 5120.2300.0 |
| 2 | Medical Version (M5) | Snap-in | Front Side | Quick connect terminals 6.3 x 0.8 mm | I | | 5120.2301.0 |
| 4 | Medical Version (M5) | Snap-in | Front Side | Quick connect terminals 6.3 x 0.8 mm | I | | 5120.2303.0 |
| 6 | Medical Version (M5) | Snap-in | Front Side | Quick connect terminals 6.3 x 0.8 mm | I | | 5120.2304.0 |
| 10 | Medical Version (M5) | Snap-in | Front Side | Quick connect terminals 6.3 x 0.8 mm | I | | 5120.2306.0 |
| 15 | Medical Version (M5) | Snap-in | Front Side | Quick connect terminals 6.3 x 0.8 mm | I | | 5120.2307.0 |
| 4 | Medical Version (M5) | Screw/PCB snap-in | Rear Side | PCB pin and earth pin 6.3 x 0.8 | I | | 5120.5373.0 |
| 6 | Medical Version (M5) | Screw/PCB snap-in | Rear Side | PCB pin and earth pin 6.3 x 0.8 | I | | 5120.5374.0 |
| 4 | Medical Version (M5) | Screw/PCB | Rear Side | PCB pin and earth pin 6.3 x 0.8 | I | | 5120.4373.0 |
| 6 | Medical Version (M5) | Screw/PCB | Rear Side | PCB pin and earth pin 6.3 x 0.8 | I | | 5120.4374.0 |
| 1 | Medical Version (M5) | Screw-on/Rivet | Front-/Rear-Side | Quick connect terminals 6.3 x 0.8 mm | I | | 5120.0300.0 |
| 2 | Medical Version (M5) | Screw-on/Rivet | Front-/Rear-Side | Quick connect terminals 6.3 x 0.8 mm | I | | 5120.0301.0 |
| 4 | Medical Version (M5) | Screw-on/Rivet | Front-/Rear-Side | Quick connect terminals 6.3 x 0.8 mm | I | | 5120.0303.0 |
| 4 | Medical Version (M5) | Screw-on/Rivet | Front-/Rear-Side | Flexible wire and Earth pin 6.3 x 0.8 | I | | 5120.0343.0 |
| 6 | Medical Version (M5) | Screw-on/Rivet | Front-/Rear-Side | Quick connect terminals 6.3 x 0.8 mm | I | | 5120.0304.0 |
| 10 | Medical Version (M5) | Screw-on/Rivet | Front-/Rear-Side | Quick connect terminals 6.3 x 0.8 mm | I | | 5120.0306.0 |
| 15 | Medical Version (M5) | Screw-on/Rivet | Front-/Rear-Side | Quick connect terminals 6.3 x 0.8 mm | I | | 5120.0307.0 |
| 1 | Medical Version (M5) | Screw with plastic flange | Front Side | Quick connect terminals 6.3 x 0.8 mm | I | ● | 3-101-145 |
| 2 | Medical Version (M5) | Screw with plastic flange | Front Side | Quick connect terminals 6.3 x 0.8 mm | I | ● | 3-101-146 |
| 4 | Medical Version (M5) | Screw with plastic flange | Front Side | Quick connect terminals 6.3 x 0.8 mm | I | ● | 3-100-794 |
| 6 | Medical Version (M5) | Screw with plastic flange | Front Side | Quick connect terminals 6.3 x 0.8 mm | I | ● | 3-101-147 |
| 10 | Medical Version (M5) | Screw with plastic flange | Front Side | Quick connect terminals 6.3 x 0.8 mm | I | ● | 3-101-148 |

| Rated Current [A] | Filter-Type | Mounting | Mounting side | Terminal | Protection Class | V-Lock | Order Number |
|-------------------|----------------------|---------------------------|------------------|---------------------------------------|------------------|--------|----------------|
| 15 | Medical Version (M5) | Screw with plastic flange | Front Side | Quick connect terminals 6.3 x 0.8 mm | I | ● | 3-101-149 |
| 1 | Medical Version (M5) | Screw | Rear Side | Quick connect terminals 6.3 x 0.8 mm | I | | 5120.1300.0 |
| 2 | Medical Version (M5) | Screw | Rear Side | Quick connect terminals 6.3 x 0.8 mm | I | | 5120.1301.0 |
| 4 | Medical Version (M5) | Screw | Rear Side | Quick connect terminals 6.3 x 0.8 mm | I | | 5120.1303.0 |
| 6 | Medical Version (M5) | Screw | Rear Side | Quick connect terminals 6.3 x 0.8 mm | I | | 5120.1304.0 |
| 10 | Medical Version (M5) | Screw | Rear Side | Quick connect terminals 6.3 x 0.8 mm | I | | 5120.1306.0 |
| 10 | Medical Version (M5) | Screw | Rear Side | Quick connect terminals 6.3 x 0.8 mm | I | ● | 5120.1306.0.21 |
| 10 | Medical Version (M5) | Screw | Rear Side | Flexible wire and Earth pin 6.3 x 0.8 | I | | 5120.1346.0 |
| 15 | Medical Version (M5) | Screw | Rear Side | Quick connect terminals 6.3 x 0.8 mm | I | | 5120.1307.0 |
| 1 | Medical Version (M5) | Snap-in | Front Side | Quick connect terminals 6.3 x 0.8 mm | II | | 5120.2300.1 |
| 2 | Medical Version (M5) | Snap-in | Front Side | Quick connect terminals 6.3 x 0.8 mm | II | | 5120.2301.1 |
| 4 | Medical Version (M5) | Snap-in | Front Side | Quick connect terminals 6.3 x 0.8 mm | II | | 5120.2303.1 |
| 6 | Medical Version (M5) | Snap-in | Front Side | Quick connect terminals 6.3 x 0.8 mm | II | | 5120.2304.1 |
| 10 | Medical Version (M5) | Snap-in | Front Side | Quick connect terminals 6.3 x 0.8 mm | II | | 5120.2306.1 |
| 15 | Medical Version (M5) | Snap-in | Front Side | Quick connect terminals 6.3 x 0.8 mm | II | | 5120.2307.1 |
| 4 | Medical Version (M5) | Screw/PCB snap-in | Rear Side | PCB pin and earth pin 6.3 x 0.8 | II | | 5120.5373.1 |
| 6 | Medical Version (M5) | Screw/PCB snap-in | Rear Side | PCB pin and earth pin 6.3 x 0.8 | II | | 5120.5374.1 |
| 10 | Medical Version (M5) | Screw/PCB snap-in | Rear Side | PCB pin and earth pin 6.3 x 0.8 | II | | 5120.5376.1 |
| 4 | Medical Version (M5) | Screw/PCB | Rear Side | PCB pin and earth pin 6.3 x 0.8 | II | | 5120.4373.1 |
| 6 | Medical Version (M5) | Screw/PCB | Rear Side | PCB pin and earth pin 6.3 x 0.8 | II | | 5120.4374.1 |
| 2 | Medical Version (M5) | Screw-on/Rivet | Front-/Rear-Side | Quick connect terminals 6.3 x 0.8 mm | II | | 5120.0301.1 |
| 4 | Medical Version (M5) | Screw-on/Rivet | Front-/Rear-Side | Quick connect terminals 6.3 x 0.8 mm | II | | 5120.0303.1 |
| 6 | Medical Version (M5) | Screw-on/Rivet | Front-/Rear-Side | Quick connect terminals 6.3 x 0.8 mm | II | | 5120.0304.1 |
| 10 | Medical Version (M5) | Screw-on/Rivet | Front-/Rear-Side | Solder terminals | II | | 5120.0316.1 |
| 1 | Medical Version (M5) | Screw | Rear Side | Quick connect terminals 6.3 x 0.8 mm | II | | 5120.1300.1 |
| 2 | Medical Version (M5) | Screw | Rear Side | Quick connect terminals 6.3 x 0.8 mm | II | | 5120.1301.1 |
| 2 | Medical Version (M5) | Screw | Rear Side | Solder terminals | II | | 5120.1311.1 |
| 4 | Medical Version (M5) | Screw | Rear Side | Quick connect terminals 6.3 x 0.8 mm | II | | 5120.1303.1 |
| 6 | Medical Version (M5) | Screw | Rear Side | Quick connect terminals 6.3 x 0.8 mm | II | | 5120.1304.1 |

| Rated Current [A] | Filter-Type | Mounting | Mounting side | Terminal | Protection Class | V-Lock | Order Number |
|-------------------|------------------------|----------------|------------------|--------------------------------------|------------------|--------|----------------|
| 10 | Medical Version (M5) | Screw | Rear Side | Quick connect terminals 6.3 x 0.8 mm | II | | 5120.1306.1 |
| 2 | Bleed Resistor Version | Snap-in | Front Side | Quick connect terminals 6.3 x 0.8 mm | I | | 5120.2201.0 |
| 4 | Bleed Resistor Version | Snap-in | Front Side | Quick connect terminals 6.3 x 0.8 mm | I | | 5120.2203.0 |
| 6 | Bleed Resistor Version | Snap-in | Front Side | Quick connect terminals 6.3 x 0.8 mm | I | | 5120.2204.0 |
| 10 | Bleed Resistor Version | Snap-in | Front Side | Quick connect terminals 6.3 x 0.8 mm | I | | 5120.2206.0 |
| 15 | Bleed Resistor Version | Snap-in | Front Side | Quick connect terminals 6.3 x 0.8 mm | I | | 5120.2207.0 |
| 15 | Bleed Resistor Version | Snap-in | Front Side | Quick connect terminals 6.3 x 0.8 mm | I | ● | 5120.2207.0.21 |
| 10 | Bleed Resistor Version | Screw-on/Rivet | Front-/Rear-Side | Solder terminals | I | | 5120.0216.0 |

Most Popular.

Availability for all products can be searched real-time: <https://www.schurter.com/en/Stock-Check/Stock-Check-SCHURTER>

- 15 A version only according UL/CSA
- Type for screw-on mounting from rear side has pre-threaded holes for M3 screws

Variants with plastic flange are all V-Lock versions.

Packaging unit 10 Pcs

Accessories

Description



Wire Harness
Wire harness for SCHURTER products



Assorted Covers
Rear Cover

0859.0048



Cord retaining kits
Cord retaining strain relief

Flat head, E
Flat head, G

4700.0005
4700.0007

Mating Outlets/Connectors

Category / Description



[Appliance Outlet Overview complete](#)

| | |
|---|------|
| IEC Appliance Outlet F, Screw-on Mounting, Front Side, Solder Terminal | 4787 |
| IEC Appliance Outlet F, Snap-in Mounting, Front Side, Solder or Quick-connect Terminal | 4788 |
| IEC Appliance Outlet F or H, Screw-on Mounting, Front Side, Solder, PCB or Quick-connect Terminal | 5091 |

[Appliance Outlet further types to 5120](#)



[Connector Overview complete](#)

| | |
|---|---------|
| 4782 Mounting: Power Cord, 3 x 1 mm² / 3 x 18 AWG, Cable, Connector: IEC C13 | 4782 |
| 4785 Mounting: Power Cord, 3 x 1 mm² / 3 x 18 AWG, Cable, Connector: IEC C13 | 4785 |
| 4300-06 Mounting: Power Cord, 3 x 1 mm² / 3 x 18 AWG, Cable, Connector: IEC C13 | 4300-06 |
| IEC Connector C15 for hot conditions 120°C, Rewireable, Straight | 4781 |
| IEC Connector C15 for hot conditions 120°C, Rewireable, Angled | 4784 |

[Connector further types to 5120](#)

...

Mating Outlets/Connectors shuttered



[Power Cord Overview complete](#)

| | |
|---|---------|
| VAC13KS, Overview, V-Lock cord retaining, diverse Connector IEC C13, diverse, black | VAC13KS |
| Power cord with IEC connector C17, V-Lock, straight | VAC17KS |

[Power Cord further types to 5120](#)