

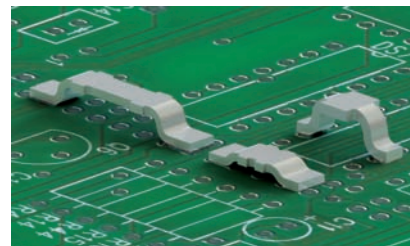
SMT PRINTED CIRCUIT BOARD JUMPERS

SUPPLIED ON TAPE AND REEL

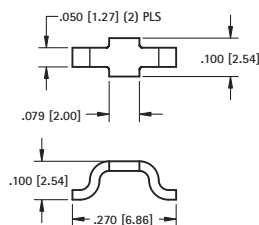
- Designed to link circuit board traces in applications where thru hole jumpers are not possible.
- All conductive polystyrene carrier meets ANSA/EIA-481 standard
- Low profile/space saving design
- Minimal PCB footprint

MATERIAL: .020 (.50) Copper, Silver Plate

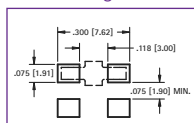
Power Rating: 0.5 Watts at 158°F/70° C, with a current of 20 Amps and a connection temperature at 221°F/105° C or less



COMPACT



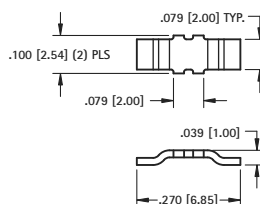
Mounting Detail



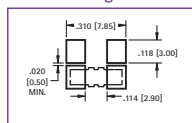
CAT. NO. 5100

CAT. NO. 5100TR - 500 pieces per reel

MICRO-MINATURE



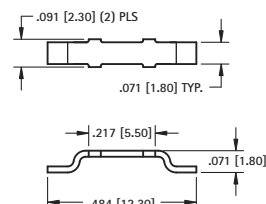
Mounting Detail



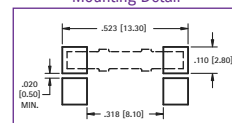
CAT. NO. 5102

CAT. NO. 5102TR - 500 pieces per reel

MINIATURE



Mounting Detail



CAT. NO. 5104

CAT. NO. 5124TR - 2500 pieces per reel

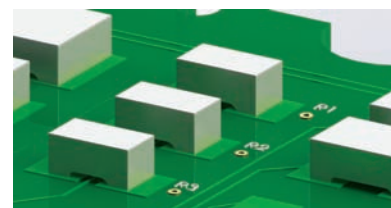
HIGH CURRENT "TRUE" ZERO OHM SMT JUMPER

New series of "True" Zero ohm high current SMT Jumpers, designed to replace Zero ohm resistors without changing board designs or layouts. These new devices are uniquely suited as true zero ohm resistor replacements.

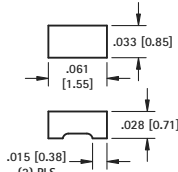
MATERIAL: .028 Copper, Silver plate

Power Rating: 0.5 Watts at 158°F/70° C, with a current of 20 Amps and a connection temperature at 221°F/105° C or less.

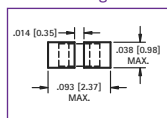
Tape & Reel Spec's: 12mm Wide, 4mm Pitch, 1,000 pieces per 7" reel meets ANSI/EIA-481 standards



0603 JUMPER

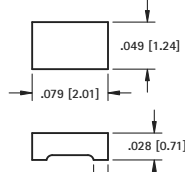


Mounting Detail

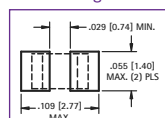


CAT. NO. 5110

0805 JUMPER

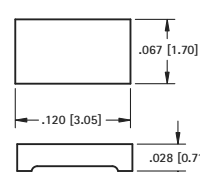


Mounting Detail

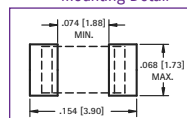


CAT. NO. 5106

1206 JUMPER



Mounting Detail

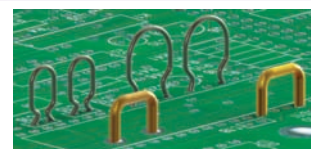


CAT. NO. 5108

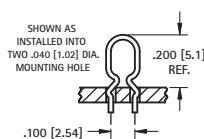
THM JUMPERS

- Unique wave leg design retains jumper in thru hole for wave soldering.
- May be used as a test point location

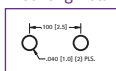
- Shorting Pin may be used in applications that require precise location of the legs.
- May also be used with micro-jacks (see pages 102-103)



.100 SPACING



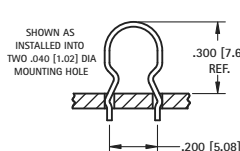
Mounting Detail



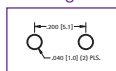
MATERIAL: .020 (.50) Dia. Phosphor Bronze, Silver Plate

CAT. NO. 5025

.200 SPACING



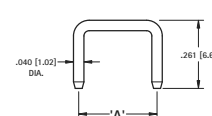
Mounting Detail



MATERIAL: .020 (.50) Dia. Phosphor Bronze, Silver Plate

CAT. NO. 5026

.200-.500 SPACING



CAT. NO.	A Dim.
1430-1	.200 (5.1)
1430-2	.250 (6.4)
1430-4	.400 (10.2)
1430-5	.500 (12.7)

MATERIAL: Brass, Gold Plate