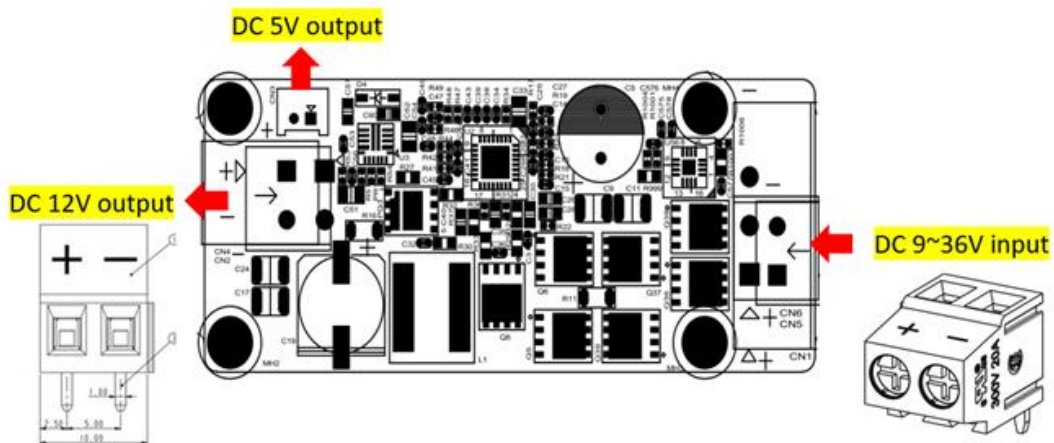
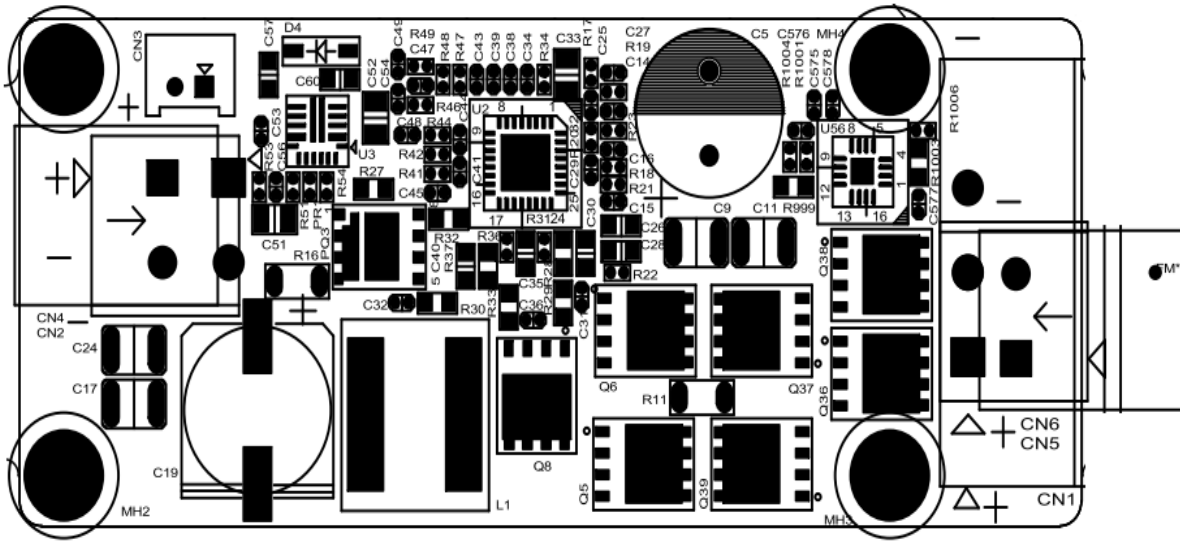


# Jumper and Connector Setting for PER-P30D A1.0\_0\_0

## List of Connectors

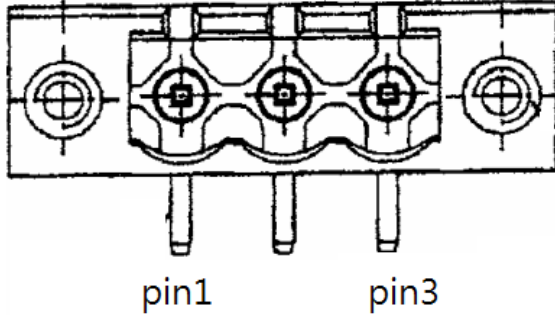


### Connector & Pinhead

| Label            | Function                    |
|------------------|-----------------------------|
| CN1(colay CN5/6) | 9-36V input power connector |
| CN2(colay CN4)   | 12V output power connector  |
| CN3              | 5V output power connector   |

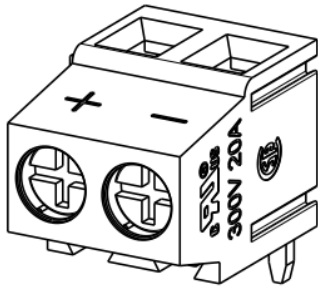
# Connector Define

## CN1(colay CN5/6) 9-36V input power connector



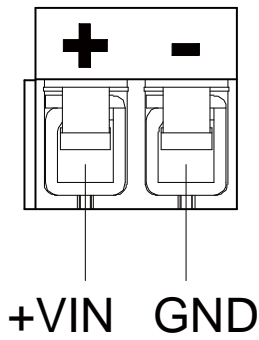
| Pin | Pin Name | Signal Type | Signal level |
|-----|----------|-------------|--------------|
| 1   | 9-36V    | PWR         | 9-36V(16A)   |
| 2   | GND      | GND         |              |
| 3   | GND      | GND         |              |

## CN5 9-36V input power connector



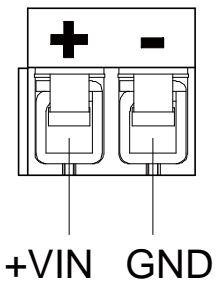
| Pin | Pin Name | Signal Type | Signal level |
|-----|----------|-------------|--------------|
| 1   | 9-36V    | PWR         | 9-36V(16A)   |
| 2   | GND      | GND         |              |

**CN6 9-36V input power connector**



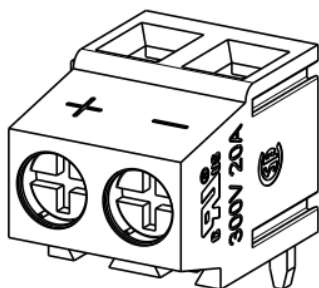
| Pin | Pin Name | Signal Type | Signal level |
|-----|----------|-------------|--------------|
| 1   | 9-36V    | PWR         | 9-36V(16A)   |
| 2   | GND      | GND         |              |

**CN2(colay CN4) 12V output power connector**



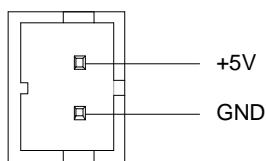
| Pin | Pin Name | Signal Type | Signal level |
|-----|----------|-------------|--------------|
| 1   | 12V      | PWR         | 12V(10A)     |
| 2   | GND      | GND         |              |

## CN4 12V output power connector



| Pin | Pin Name | Signal Type | Signal level |
|-----|----------|-------------|--------------|
| 1   | 12V      | PWR         | 12V(10A)     |
| 2   | GND      | GND         |              |

## CN3 5V output power connector



| Pin | Pin Name | Signal Type | Signal level |
|-----|----------|-------------|--------------|
| 1   | +5V      | PWR         | +5V(1.5A)    |
| 2   | GND      | GND         |              |

※ CN3 offer 1.5A current for SATA CONN.

| Connector No. | Function                    | Mating Connector |                             | Available Cable       | AAEON Cable P/N |
|---------------|-----------------------------|------------------|-----------------------------|-----------------------|-----------------|
|               |                             | Vendor           | Model No.                   |                       |                 |
| CN1/CN5/CN6   | 9-36V input power connector | DECA             | AMC101-5003<br>(1652003201) | Power cable 13cm      | 1702030103      |
| CN2/CN4       | 12V output power connector  | NA               | NA                          | Power cable 15cm      | 170X000742      |
| CN3           | 5V output power connector   | JST              | JST PHR-2                   | SATA power cable 15cm | 1702150155      |