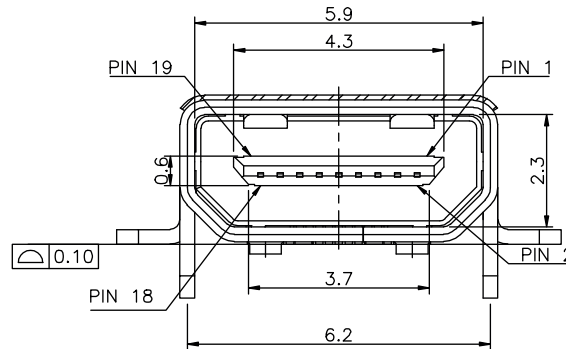


PCB LAYOUT - COMPONENT VIEW
TOLERANCE: $\pm 0.05\text{mm}$



TECHNICAL CHARACTERISTICS

MATERIAL
INSULATOR MATERIAL: LCP
FLAMMABILITY RATING UL94-V0
COLOUR: BLACK
CONTACT MATERIAL: COPPER ALLOY
CONTACT TYPE: STAMPED
CONTACT PLATING: SELECTIVE GOLD
SHIELDING: BRASS TIN PLATED
QUALITY CLASS: 5000 MATING CYCLES

ENVIRONMENTAL
OPERATING TEMPERATURE: $-40\text{ }^{\circ}\text{C}$ UP TO $85\text{ }^{\circ}\text{C}$
COMPLIANCE: LEAD FREE AND ROHS

ELECTRICAL
CURRENT RATING: 0.5 A
WORKING VOLTAGE: 40 VAC
INSULATION RESISTANCE: 100 M Ω MIN
DIELECTRIC WITHSTANDING VOLTAGE: 250 VAC/MN
CONTACT RESISTANCE: 10 mOHM MAX

SOLDERING
JEDEC LEAD FREE REFLOW SOLDERING

PACKAGING
TAPE & REEL

RoHS Compliant				PROJECTION: 	GENERAL TOLERANCE $.X = \pm 0.2$ $.XX = \pm 0.15$		DESCRIPTION: HORIZONTAL SMT MICRO HDMI	SIZE A4
G								
F								
E								
D				APPROVAL: RJ	UNIT: MM	WERI PART NO: 685 119 248 223		
C	24-JUN-14	LAYOUT MOD	AS					
B	03-JAN-13	DWG REVIEW	QL					
A	19-JUL-13	PDF	QL					
REV	DATE	FILE	BY					