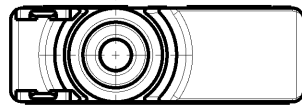
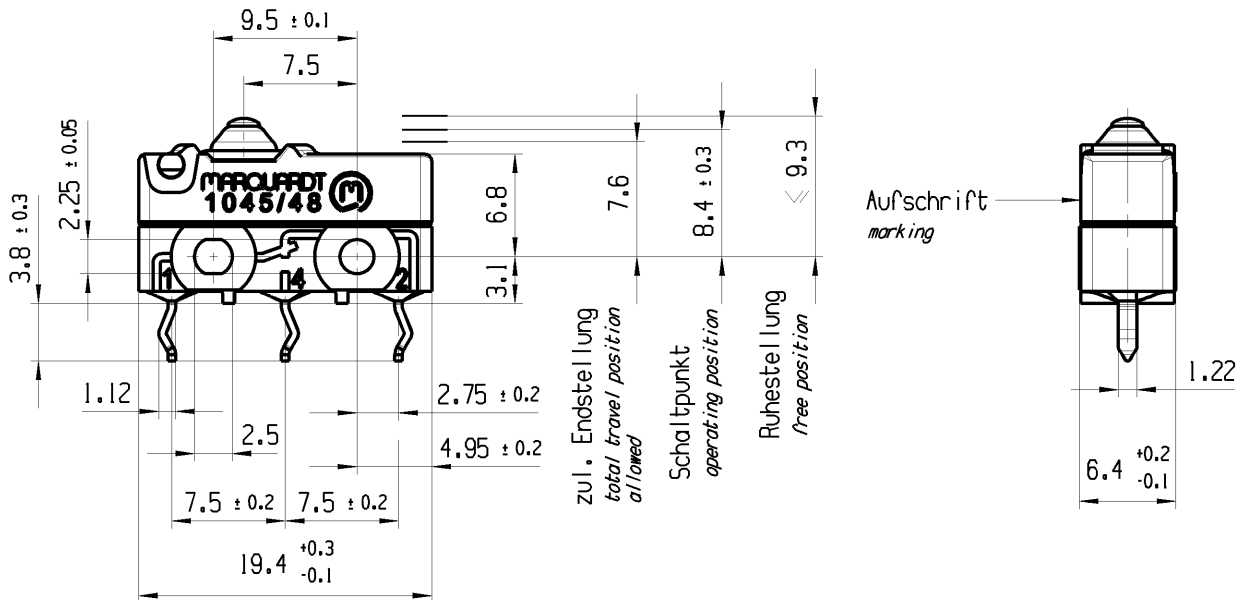


CONFIDENTIAL

VERTRAULICH

Alle Rechte bei Marquardt, auch fuer den Fall von Schutzrechtsanmeldungen. Jede Veruegungsbefugnis, wie Kopier- und Weitergaberecht, bei uns.

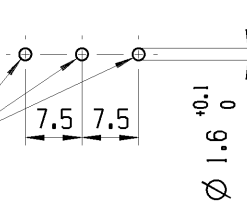
THIS DRAWING IS THE EXCLUSIVE PROPERTY OF MARQUARDT. WITHOUT THEIR CONSENT IT MAY NOT BE REPRODUCED OR GIVEN TO THIRD PARTIES.




Empfohlenes Lochbild Bestueckungsseite
Toleranzen nach DIN IEC 326 Teil 3 sehr fein
Recommended hole pattern component side
tolerances acc. to DIN IEC 326 item 3 very fine

1:1

Anschlussloch
component hole



Aufschrift
marking

MARQUARDT 
1045/48

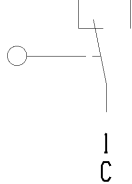
10(3)A 250V AC
IE4   US LISTED

Herstellort/-jahr/-monat/-tag
Code of manufacture:
place/year/month/day

Auf Verpackung/ on box: G

  US LISTED

NC NO
2 4



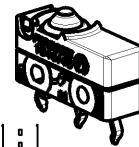
Wechsler 1-polig mit Trennhilfe
auf Oeffnerseite
single pole changeover with
positiv action at NC - side

Schaltbetaetigungskraft ≤ 3.2 N
actuating force

Rueckschaltkraft ≥ 1 N
release force

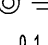
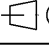

Differenzweg ≤ 0.2 mm
movement differential

IP Schutzklasse nach EN 60529 IP 67
protection class acc to EN 60529 IP 67



1:1

G: Konform nach IEC 60335-1:2001 Kap. 30
G: matching IEC 60335-1:2001 clause 30

-	-	-	1045.2903-XX														
Figure	Type	Customer No.	Art.No.-PI														
Shape and location	Angle $\pm 2^\circ$	Sheet 01	Ident. K														
	Edge tolerance	Format DIN A4	Document number 10452903														
 0.1	<table border="1"> <thead> <tr> <th>Length</th> <th>Radial</th> </tr> </thead> <tbody> <tr> <td>0-6 ± 0.1</td> <td>0-6 ± 0.2</td> </tr> <tr> <td>>6-15 ± 0.15</td> <td>>6-15 ± 0.3</td> </tr> <tr> <td>>15-30 ± 0.2</td> <td>>15-30 ± 0.5</td> </tr> <tr> <td>>30-70 ± 0.3</td> <td>>30-200 $\pm 10\%$</td> </tr> <tr> <td>>70-120 ± 0.4</td> <td></td> </tr> <tr> <td>>120-200 ± 0.8</td> <td></td> </tr> </tbody> </table>	Length	Radial	0-6 ± 0.1	0-6 ± 0.2	>6-15 ± 0.15	>6-15 ± 0.3	>15-30 ± 0.2	>15-30 ± 0.5	>30-70 ± 0.3	>30-200 $\pm 10\%$	>70-120 ± 0.4		>120-200 ± 0.8		Projection 	Index f
	Length	Radial															
0-6 ± 0.1	0-6 ± 0.2																
>6-15 ± 0.15	>6-15 ± 0.3																
>15-30 ± 0.2	>15-30 ± 0.5																
>30-70 ± 0.3	>30-200 $\pm 10\%$																
>70-120 ± 0.4																	
>120-200 ± 0.8																	
f	136255	Scale 2:1	Snap action switch														
e	130794	All dimensions are in millimetres															
d	126682	System NX V11.0	 MARQUARDT														
c	83090	Replacement of															
Index	MEC-No.	Date (YYYY-MM-DD)	Edited by														