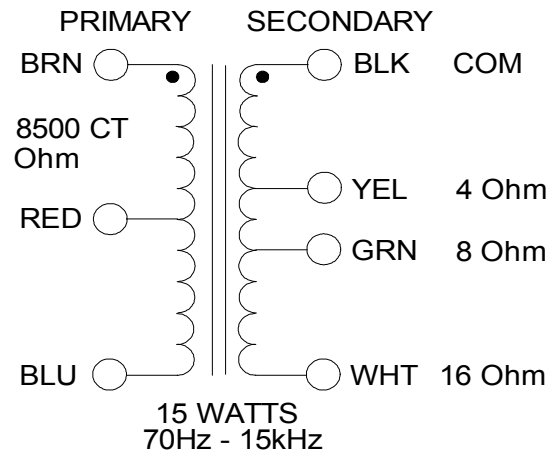


1760E

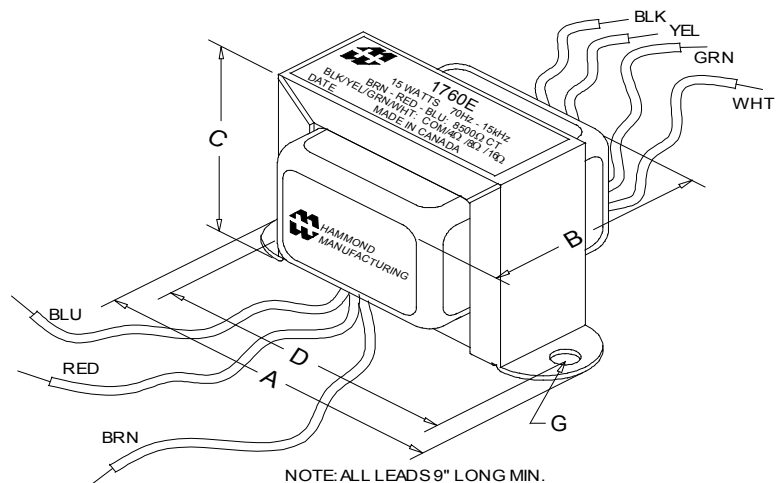
TUBE GUITAR AMPLIFIER - OUTPUT TRANSFORMER

- Designed for drop in replacement of original units.
- Constructed to look similar to original factory units (where possible).
- Material used & design specifications were kept as close as possible to the original part to preserve the stock "tone".
- Open style with minimum 9" long primary and secondary leads
- Frequency response 70Hz - 15KHz (0/-1dB reference @ 1KHz)
- Distortion is less than 1% @ 70Hz



ELECTRICAL SPECIFICATIONS

Characteristics		Typical	
Input Impedance		8500 Ohms	
Output Impedance		4, 8 & 16 Ohms	
Output Power		15W	
DCR			
Primary Brown-Red		154.40 Ohms	
Primary Red-Blue		159.20 Ohms	
Secondary Black-Yellow		0.410 Ohm	
Secondary Black-Green		0.540 Ohm	
Secondary Black-White		0.830 Ohm	
Inductance	Impedance	@ 1.0 kHz, 1.0 V OC	
Primary Brown-Blue		21.60H	129 KOhm
Leakage Inductance		@ 1.0 kHz, 1.0 V SC	
Primary Brown-Blue		323.9mH	
Dielectric Strength		1500VRMS	
Temperature Range		-40 to 105 degC	



Dimensions

A	3.250" ±0.063	D	2.813" ±0.063
B	2.085" ±0.125	G	0.187" X 0.300"
C	1.995" ±0.063		±0.015

TEST CONDITIONS

Measurement instruments:

D scope series iii audio analyzer
Wayne Kerr 3255B with a 3265B

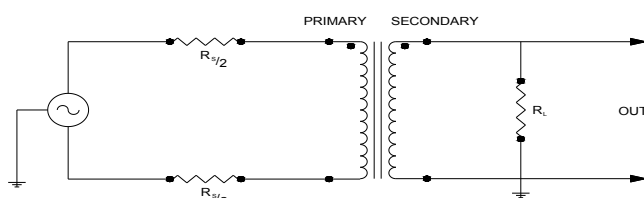
Keithley 2010 DVM

Hp4192a impedance analyzer

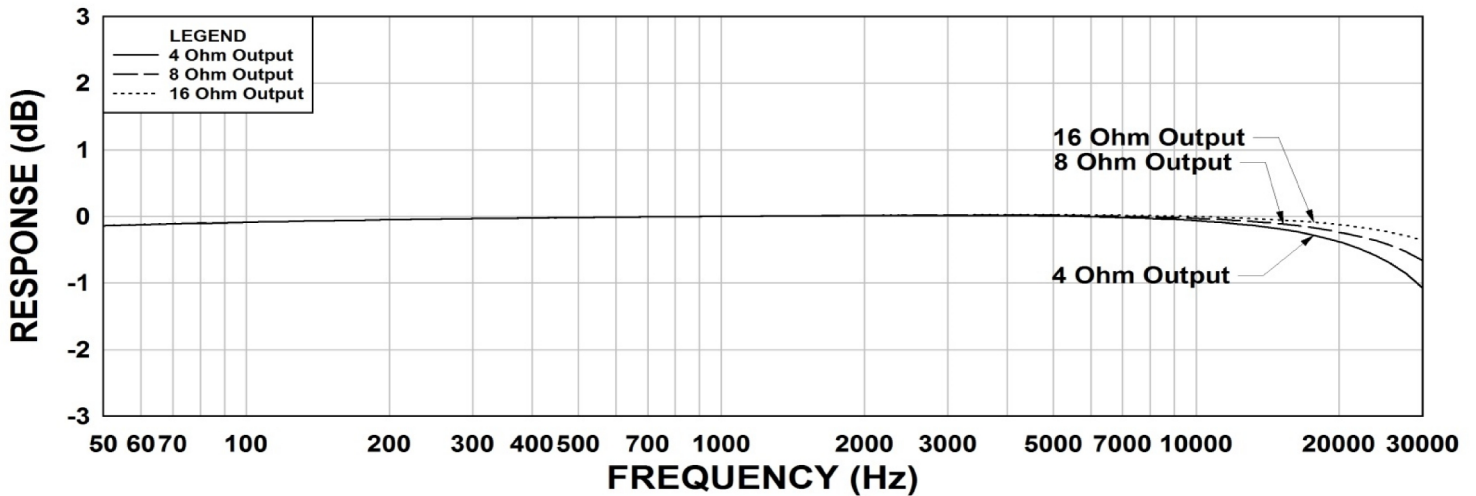
* All graphs input level 27dBu @1.0KHz reference.

**The results are typical and are subject to normal manufacturing and electrical tolerances.

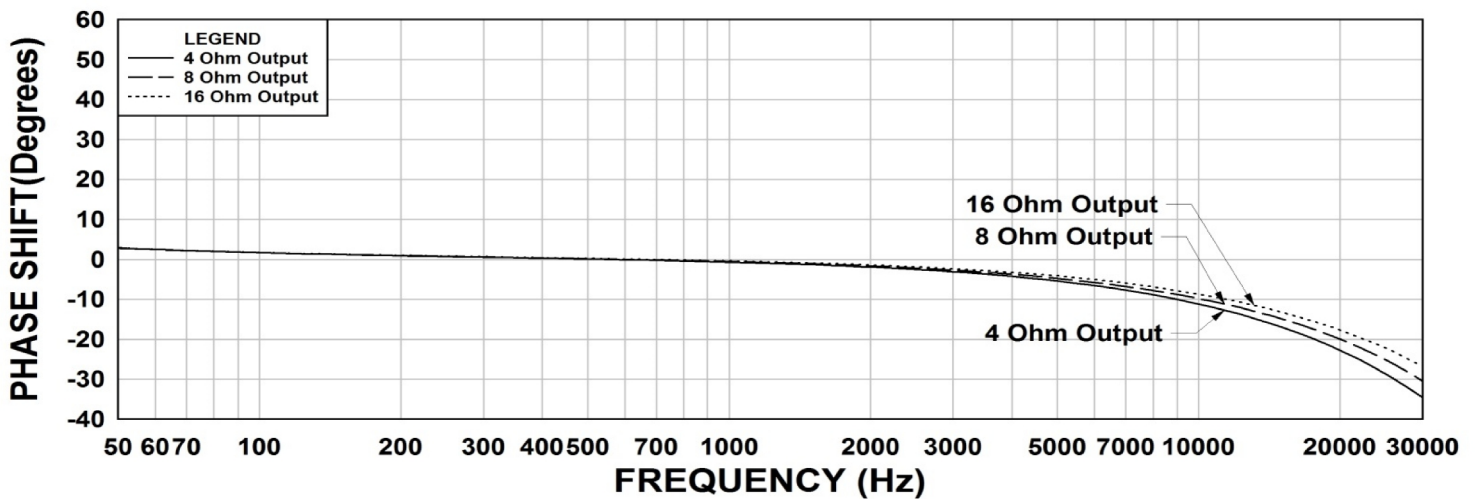
TYPICAL TEST CIRCUIT



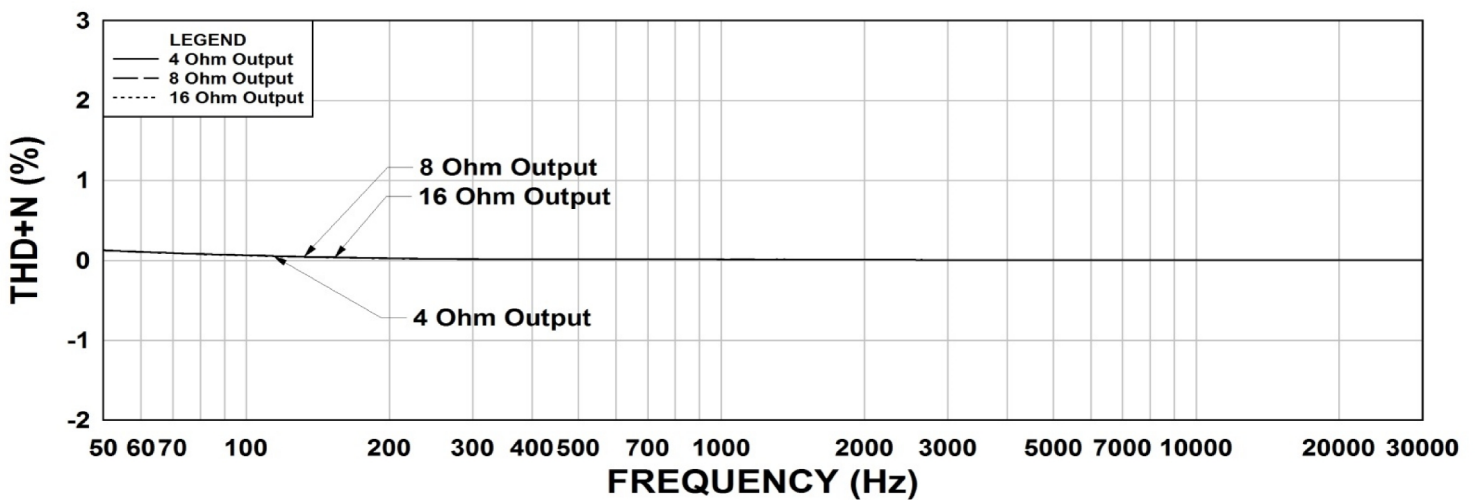
1760E Frequency Response RS = 8.5K Ohms



1760E Phase Shift RS = 8.5K Ohms



1760E THD+N RS = 8.5K Ohms



This drawing and the information in it is the property of Hammond Manufacturing. It may not be reproduced, transmitted or used in any manner whatsoever without the written permission of Hammond Manufacturing. Data subject to change without notice.