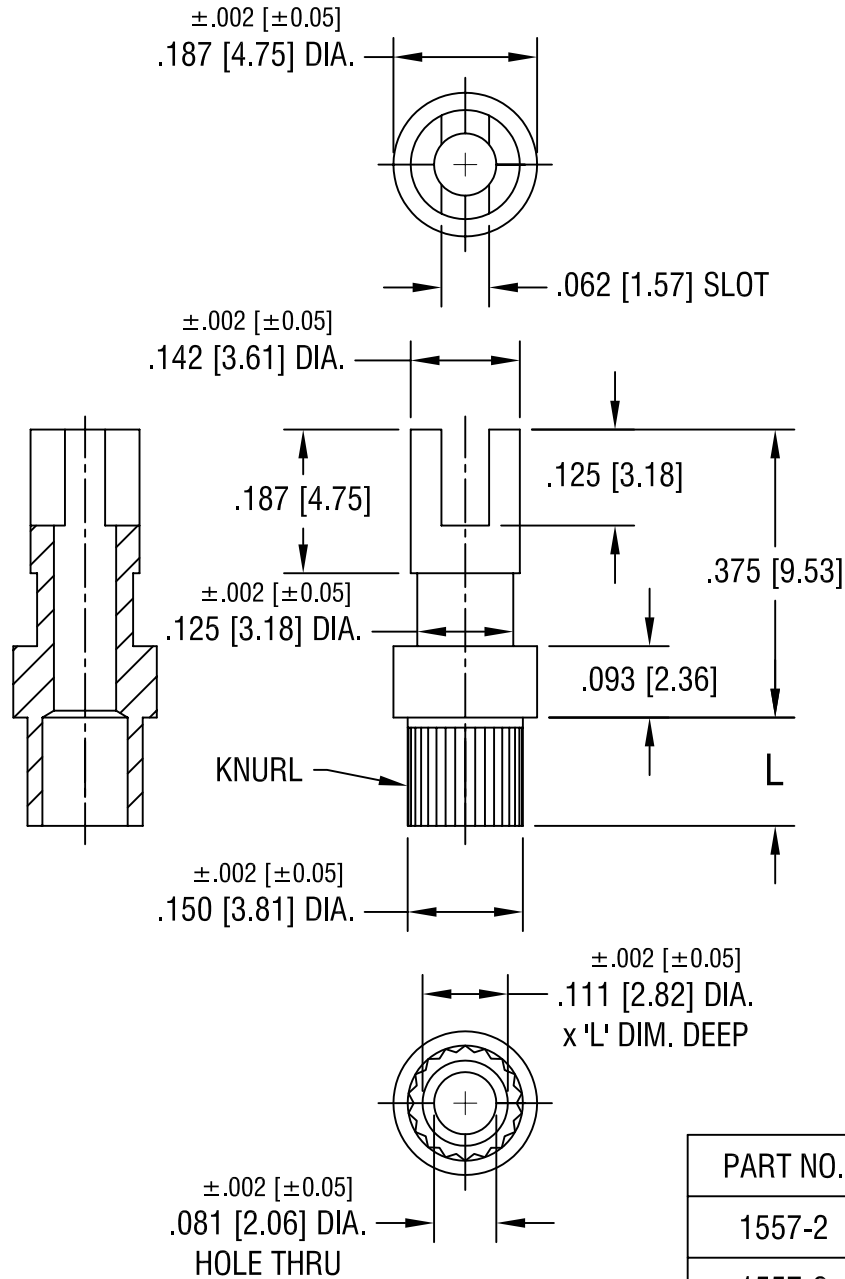


THIS DOCUMENT IS THE PROPERTY OF
KEYSTONE ELECTRONICS CORP. AND
SHALL NOT BE REPRODUCED, DISTRIBUTED
OR USED AS A BASIS FOR MANUFACTURE
WITHOUT PRIOR WRITTEN PERMISSION
FROM KEYSTONE ELECTRONICS CORP.



PART NO.	'L' DIM.
1557-2	.109 [2.77]
1557-3	.141 [3.58]
1557-4	.172 [4.37]

KEYSTONE ELECTRONICS CORP.

ASTORIA, N.Y. 11105-2017

PART NAME				TERMINAL			
MATERIAL				BRASS			
FINISH				DRN BY		DATE	
TIN PLATE				BOONE		6.17.02	
				APP'D		SCALE	
				LN		4X	
TOLERANCES INCH [MM]				CODE		DWG NO.	
DECIMAL $\pm .005$ [± 0.15]				C/M		1557-	
ANGULAR $\pm 1^\circ$				UNLESS OTHERWISE SPECIFIED			

DATE	DESCRIPTION	REV.