

4

3

2

1

THIS DRAWING IS UNPUBLISHED.

RELEASED FOR PUBLICATION

--

© COPYRIGHT - By -

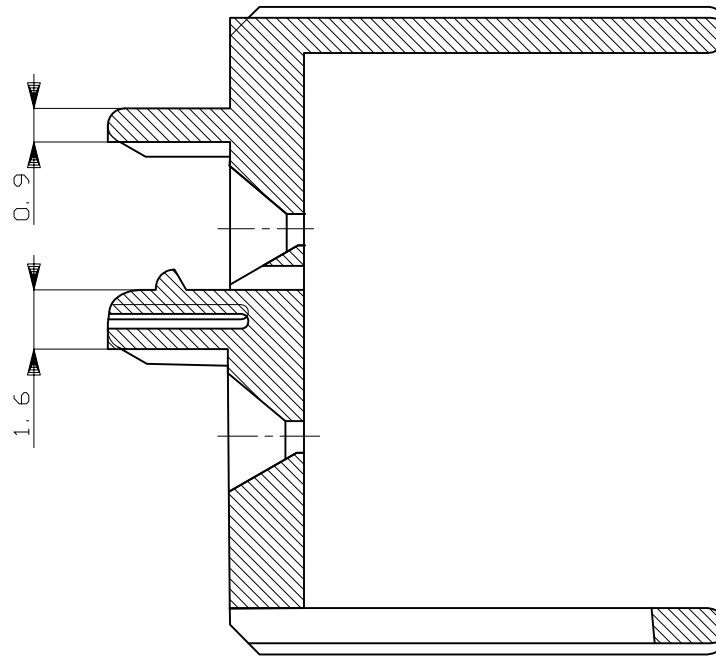
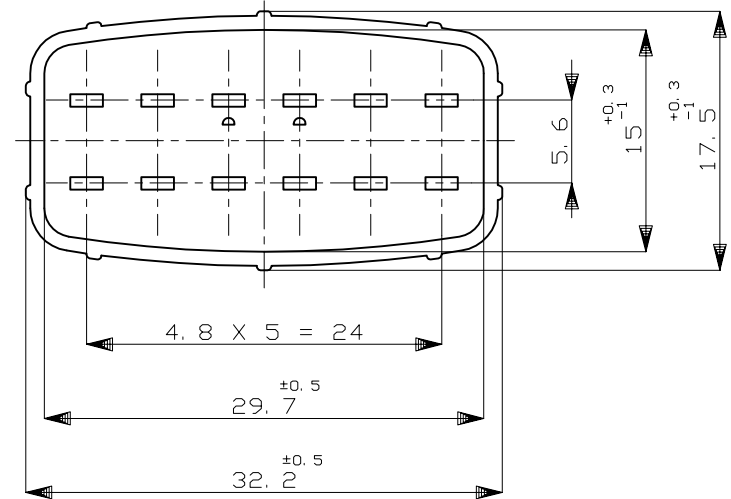
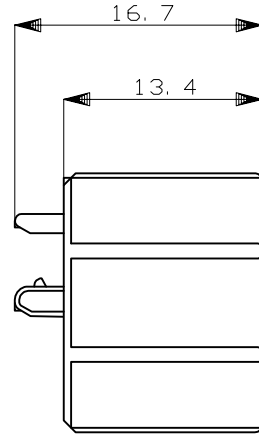
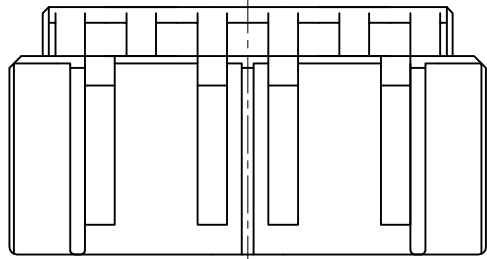
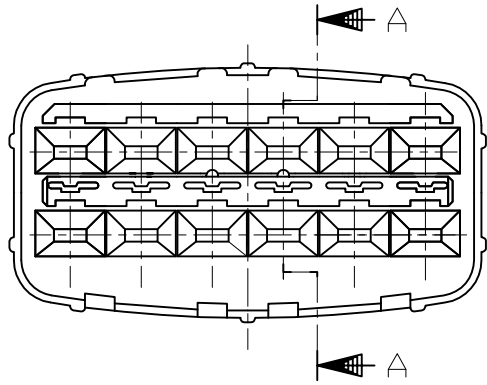
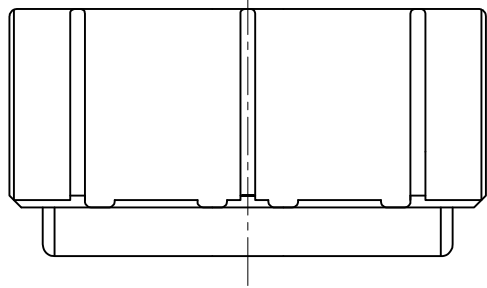
ALL RIGHTS RESERVED.

LOC

DIST

REVISIONS

P	LTR	DESCRIPTION	DATE	DWN	APVD
	D1	REVISED	08JAN2014	TS	KB



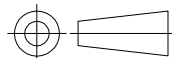
SECTION  
断面 A-A  
(尺度 5:1)

- 1. 本品は、キャップハウジング型番174663に装着される。
- 1. TO BE MATED WITH CAP HOUSING (PN 174663)

HB	自然色 (NATURAL)	1-174664-1
V-2	黄 (YELLOW)	174664-7
使用材料難燃グレード (FLAMMABILITY OF MATERIAL)	色 (COLOR)	型番 (PART NUMBER)

THIS DRAWING IS A CONTROLLED DOCUMENT.

DIMENSIONS:  
mm



TOLERANCES UNLESS OTHERWISE SPECIFIED:

0 PLC	±	-
1 PLC	±	-
2 PLC	±	-
3 PLC	±	-
4 PLC	±	-
ANGLES	±	-

MATERIAL

PBT

FINISH

-

DWN 5/26'87

K.ODA

CHK 5/28'87

Y.MATSUSAKA

APVD 5/29'87

M.NOGUCHI

PRODUCT SPEC

108-5262

APPLICATION SPEC

-

WEIGHT

-

CUSTOMER DRAWING

**STE** TE Connectivity

NAME  
12P. ECONOSEAL J-MARKII+ CONNECTOR  
DOUBLE LOCK PLATE FOR CAP HOUSING

SIZE	CAGE CODE	DRAWING NO	RESTRICTED TO
A3	00779	C=174664	-

SCALE 2:1 SHEET 1 of 1 REV D1

GENERAL TOLERANCE

0 < * ≤ 10	: ±0.2
10 < * ≤ 30	: ±0.25
30 < * ≤ 100	: ±0.3
ANGLES	: ±3°