

Apacer

The Most **Reliable**
Storage For Industries

CH110-MSD



CH110-MSD

Overview

Apacer microSD CH110-MSD is compatible with the microSD card version 5.0. The command list supports [Physical Layer Specification Ver6.10 Final] definitions. Card Capacity of Non-secure Area, Secure Area Supports [Part 3 Security Specification Ver5.0 Final] Specifications.

The microSD 5.0 card comes with 8-pin interface. It can alternate communication protocols between the SD mode and SPI mode. It performs data error detection and correction with very low power consumption. It supports capacity 32GB with exFAT SDXC.

Apacer microSD CH110-MSD Secure Digital 5.0 with high performance, good reliability and wide compatibility is nowadays one of the most popular cards with customized firmware techniques in semi-industrial/medical markets already.



* The actual available memory on the device is less than what is listed on the package. This is due to small discrepancies in file formats and algorithms used by various operating systems. In addition, a portion of memory space is reserved for system files and data sectors for better performance.

CH110-MSD

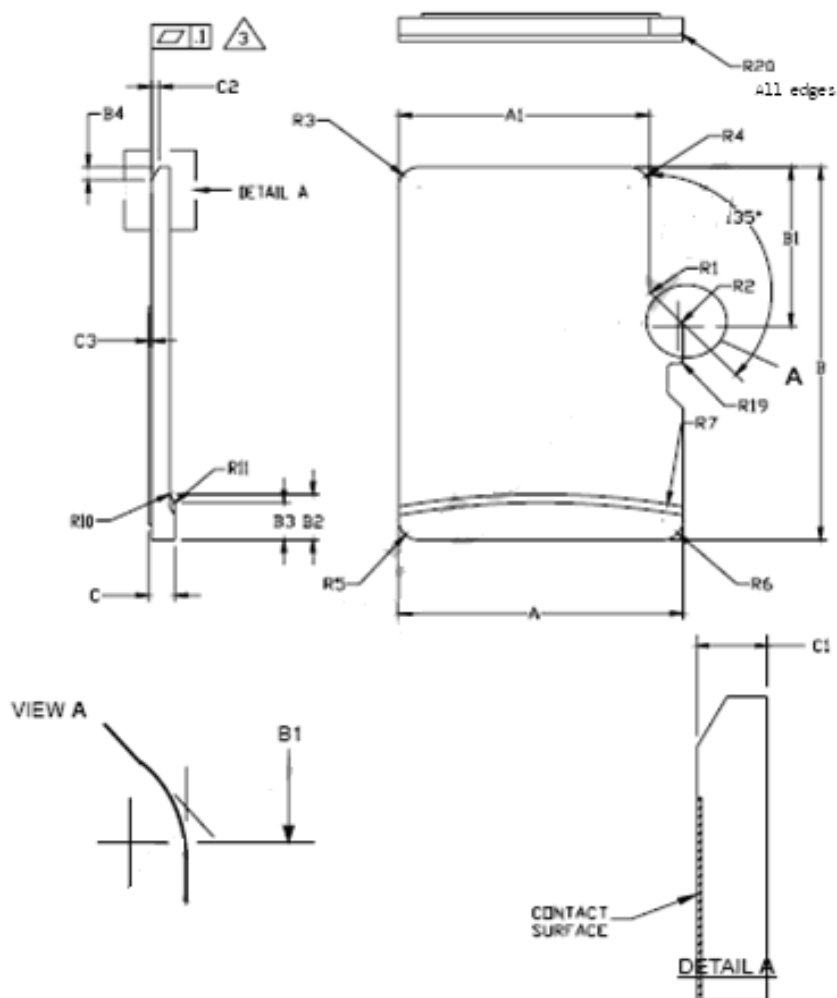
Feature

- Compliant with SD 4.0 Specification
- Supports Class 10 with U3 and UHS-I**
- S.M.A.R.T Support
- Wear-Leveling and Block Management
- Low Power Consumption
- Wide Temperature Support (Optional)
- DataRAID™
- SMART Read Refresh™

Specifications

Model	CH110-MSD
Interface	SD4.0
Connector	—
Form Factor	microSD
NAND Flash Type	3D TLC
Capacity	SDHC: 8GB~64GB
Sustained Read Performance (MB/sec)	Up to 95
Sustained Write Performance (MB/sec)	Up to 80
ECC Engine	Built-in advanced ECC algorithm
IOPS (4K Random Write)	600
Standard Operating Temperature (°C)	-25 ~ + 85
Extended Operating Temperature (°C)	-40 ~ + 85
Storage Temperature (°C)	-40 ~ + 85
Housing	Yes
H/W Write Protect	—
Shock	(Operating) 1,500G, 0.5ms
Vibration	20Hz~80Hz/1.52mm (frequency/displacement) 80Hz~2,000Hz/20G (frequency/accelerate)
Operating Voltage	2.7V ~ 3.6V
Power Consumption	Active mode: 80 mA & Idle mode: 135 uA
Dimension (L x W x H)	15 x 11 x 1 mm
MTBF (hours)	>3,000,000

Mechanical Specification



Unit: mm

**For more information,
contact your Apacer representative**

Global Presence

Taiwan (Headquarters)
Apacer Technology Inc.
Tel: +886-2-2267-8000
Fax: +886-2-2267-2261

Europe
Apacer Technology B.V.
Tel: +31-40-267-0000
Fax: +31-40-290-0686

U.S.A.
Apacer Memory America, Inc.
Tel: +1-408-518-8699
Fax: 1-510-249-9551

China
Apacer Electronic(Shanghai)
Co., Ltd.
Tel: +86-21-6228-9939

Japan
Apacer Technology Corp.
Tel: +81-3-5419-2668
Fax: +81-3-5419-0018

India
Apacer Technologies Pvt. Ltd.
Tel: +91-80-41529061~3
Fax: +91-80-41700215