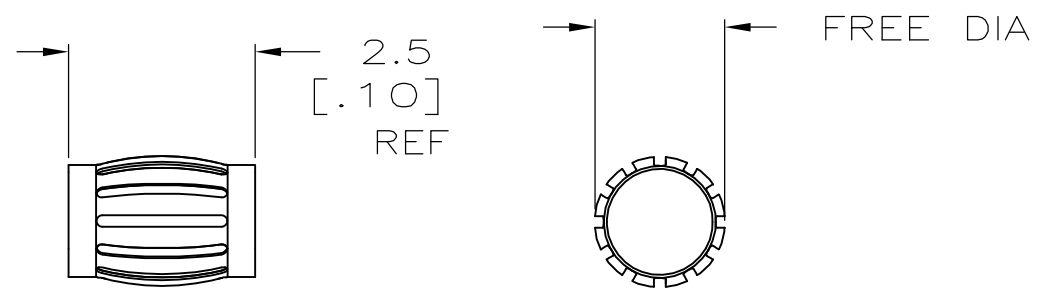
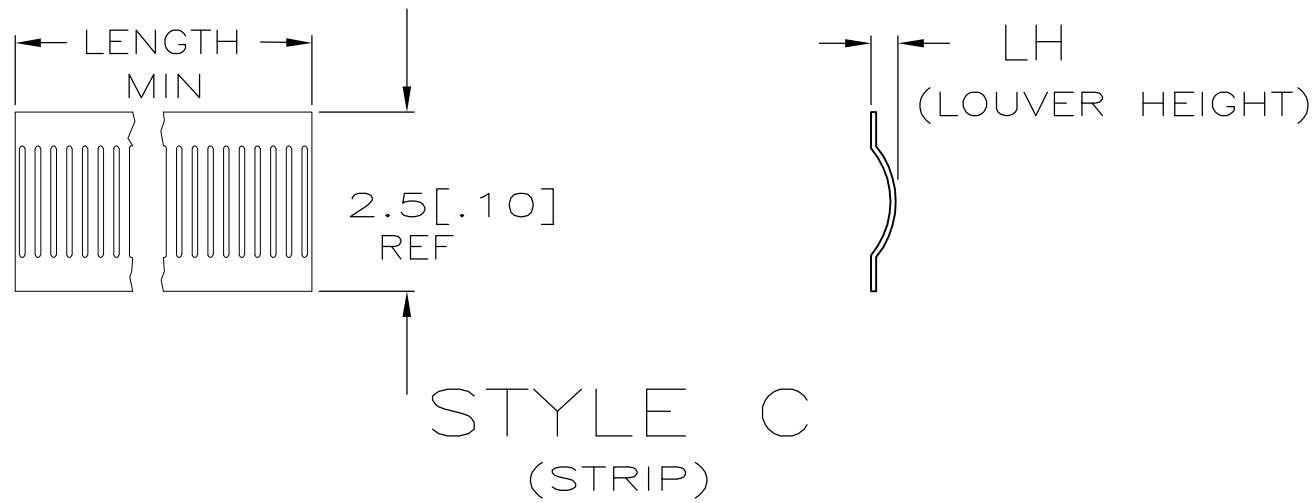


LOC	DIST	P	F	ZONE	LTR	DESCRIPTION	DATE	APPD
CH	11							
					D	ECN96022902	07-30-93	P.G.
					C	EC 0B20-1666-97	19/NOV/97	RNP
					E	EC 0B20-1595-98	09/DEC/98	RNP
					F	EC 0G3B-0280-01	15JAN02	GS
					G	EC 0G3B-0280-01	17JAN02	GS
					G1	REVISED PER ECO-09-024717	07OCT09	AEG



STYLE B  
(MALE)



STYLE C  
(STRIP)

					B	.375	--	[.014]	8	9.5	[.375]	4-2	40	0.10	[.004]	--	2-192048-6
10	OBSOLETE				B	.06	--	[.012]	8	1.7	[.067]	1-2	5	0.10	[.004]	--	2-192048-5
					B	.20	--	[.014]	--	--	--	3-2	20	0.10	[.004]	--	2-192048-4
																--	2-192048-3
																--	2-192048-2
					B	.06	--	[.012]	8			UNPL	5	0.10	[.004]	--	2-192048-1
					C		NOTE 6	[.014]	8			UNPL	--	0.10	[.004]	--	2-192048-0
	OBSOLETE															06802	1-192048-9
	OBSOLETE				B	.65	--	[.012]	8	16.6	[.655]	2	71	0.10	[.004]	06050	1-192048-8
10					B	.65	--	[.012]	8	16.6	[.655]	UNPL	71	0.10	[.004]	06049	1-192048-7
	OBSOLETE															06036	1-192048-6
	OBSOLETE				B	.59	--	[.012]	8	15.2	[.600]	UNPL	65	0.10	[.004]	06030	1-192048-5
	OBSOLETE				B	.28	--	[.012]	8	7.3	[.288]	UNPL	30	0.10	[.004]	06028	1-192048-4
10					B	.16	--	[.012]	8	4.4	[.175]	3-2	17	0.10	[.004]	06038	1-192048-3
					B	.16	--	[.012]	8	4.4	[.175]	UNPL	17	0.10	[.004]	06039	1-192048-2
					B	.13	--	[.016]	8	3.2	[.127]	4-2	11	0.10	[.004]	06031	1-192048-1
	OBSOLETE				B	.13	--	[.016]	8	3.2	[.127]	UNPL	11	0.10	[.004]	06034	1-192048-0
10					B	--	--	[.016]	8	3.2	[.127]	4-2	11	0.08	[.003]	06072	192048-9
	OBSOLETE				B	.13	--	[.016]	8	3.2	[.127]	UNPL	11	0.08	[.003]	06071	192048-8
					B	.06	--	[.012]	8	1.7	[.067]	4-2	5	0.10	[.004]	06060	192048-7
					B	.05	--	[.016]	8	1.3	[.051]	4-2	4	0.10	[.004]	06058	192048-6
10	OBSOLETE				B	.05	--	[.016]	8	1.3	[.051]	UNPL	4	0.10	[.004]	06015	192048-5
	OBSOLETE															06059	192048-4
	OBSOLETE				C		NOTE 7	[.014]	8			4-2	--	0.10	[.004]	06032	192048-3
	OBSOLETE				C		NOTE 6	[.014]	8			3-2	--	0.10	[.004]	06051	192048-2
					C		NOTE 7	[.014]	8			UNPL	--	0.10	[.004]	06033	192048-1

1. FINISH—SILVER PLATE 200 μIN THICK MIN.
  2. FINISH—NICKEL PLATE 40 μIN THICK MIN.
  3. FINISH—GOLD PLATE 10 μIN THICK MIN.
  4. FINISH—GOLD PLATE 20 μIN THICK MIN.
  5. PLATING NOTES ARE TO BE INTERPRETED AS FOLLOWS, 3-2 AS 3 OVER 2.
  6. PRODUCT IS SOLD BY THE FOOT.
  7. 72 INCH STRIP WOUND TO A ONE INCH INSIDE DIAMETER.
  8. MATERIAL—BeCu (CDA172).
9. PRELIMINARY PART NUMBER  
 10. OBSOLETE PARTS: OBSOLETE CIS STREAMLINING PER D.RENAUD/D.SINISI

STYLE	FREE DIA	LENGTH	LH	MAT'L (NOTE)	MATING DIA REF	PLATING (NOTE)	NUM LOUV	MAT'L THK	REF	PART NO.
DO NOT SCALE PRINT. UNLESS SPECIFIED				DR RA JAYNE 06-12-92		AMP Incorporated Harrisburg, PA 17105-3608  CONTACT BAND, MALE				
DIMENSIONS IN mm [INCHES]				CHK -						
TOLERANCES ON :				APPD -						
2 PLC DEC ±0.5[.02]				APPD -						
3 PLC DEC ±0.25[.010]				PRODUCT SPEC						
ANGLES ± -				-						
MATERIAL				APPLICATION SPEC		SIZE	CAGE CODE	DRAWING NO		
SEE TABLE				-		C	00779	C-192048		
FINISH				WEIGHT -		SCALE	NTS	SHEET		1 OF 1
SEE TABLE				-						

THIS DRAWING IS A CONTROLLED DOCUMENT FOR AMP INCORPORATED. IT IS SUBJECT TO CHANGE AND THE CONTROLLING ENGINEERING ORGANIZATION SHOULD BE CONTACTED FOR THE LATEST REVISION.