

## Han Q 2/0-bu HV 4-6 mm<sup>2</sup> (10 mm<sup>2</sup> opt.)

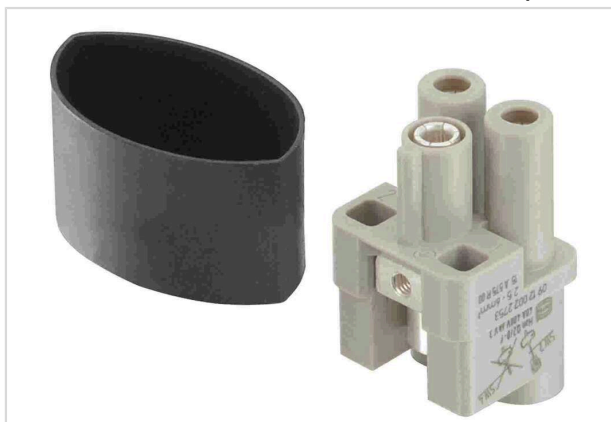


Image is for illustration purposes only. Please refer to product description.

|                    |   |
|--------------------|---|
| Part number        | 09 12 002 2752  |
| Specification      | Han Q 2/0-bu HV 4-6 mm <sup>2</sup> (10 mm <sup>2</sup> opt.)                 |
| HARTING eCatalogue | <a href="https://harting.com/09120022752">https://harting.com/09120022752</a> |

### Identification

|                |                    |
|----------------|--------------------|
| Category       | Inserts            |
| Series         | Han <sup>®</sup> Q |
| Identification | 2/0 High Voltage   |

### Version

|                    |                         |
|--------------------|-------------------------|
| Termination method | Axial screw termination |
| Gender             | Female                  |
| Size               | 3 A                     |
| Number of contacts | 2                       |
| PE contact         | Yes                     |
| Pack contents      | With heat shrink tube   |

### Technical characteristics

|                           |                          |
|---------------------------|--------------------------|
| Conductor cross-section   | 4 ... 10 mm <sup>2</sup> |
| Rated current             | 40 A                     |
| Rated voltage             | 830 V                    |
| Rated impulse voltage     | 6 kV                     |
| Pollution degree          | 3                        |
| Rated voltage acc. to UL  | 600 V                    |
| Rated voltage acc. to CSA | 600 V                    |
| Insulation resistance     | >10 <sup>10</sup> Ω      |
| Contact resistance        | ≤1 mΩ                    |
| Tightening torque         | 1.8 Nm                   |



Pushing Performance  
Since 1945

## Technical characteristics

|                      |                 |
|----------------------|-----------------|
| Limiting temperature | -40 ... +125 °C |
| Mating cycles        | ≥500            |

## Material properties

|   |  |
|---|--|
| Material (insert)                         | Polycarbonate (PC)                                     |
| Colour (insert)                           | RAL 7032 (pebble grey)                                 |
| Material (contacts)                       | Copper alloy   |
| Surface (contacts)                        | Silver plated  |
| Material flammability class acc. to UL 94 | V-0  |
| RoHS                                      | compliant with exemption                               |
| RoHS exemptions                           | 6(c): Copper alloy containing up to 4 % lead by weight |
| ELV status                                | compliant with exemption                               |
| China RoHS                                | 50   |
| REACH Annex XVII substances               | Not contained  |
| REACH ANNEX XIV substances                | Not contained  |
| REACH SVHC substances                     | Yes  |
| REACH SVHC substances                     | Lead   |
| ECHA SCIP number                          | 5dbb3851-b94e-4e88-97a1-571845975242                   |
| California Proposition 65 substances      | Yes  |
| California Proposition 65 substances      | Lead   |
| Fire protection on railway vehicles       | EN 45545-2 (2020-08) + A1 (2023-10)                    |
| Requirement set with Hazard Levels        | R22 (HL 1-3)<br>R23 (HL 1-3)                           |

## Specifications and approvals

|                |  |
|----------------|--|
| Specifications | IEC 60664-1<br>IEC 61984                                   |
| UL / CSA       | UL 1977 ECBT2.E235076<br>CSA-C22.2 No. 182.3 ECBT8.E235076 |
| Approvals      | DNV GL   |

## Commercial data

|                   |         |
|-------------------|---------|
| Packaging size    | 1       |
| Net weight        | 18.86 g |
| Country of origin | Romania |



**Pushing Performance**  
Since 1945

## Commercial data

|                                |   |
|--------------------------------|---|
| European customs tariff number | 85366990  |
| GTIN                           | 5713140016637                                     |
| eCl@ss                         | 27440205 Contact insert for industrial connectors |
| ETIM                           | EC000438  |
| UNSPSC 24.0                    | 39121522  |