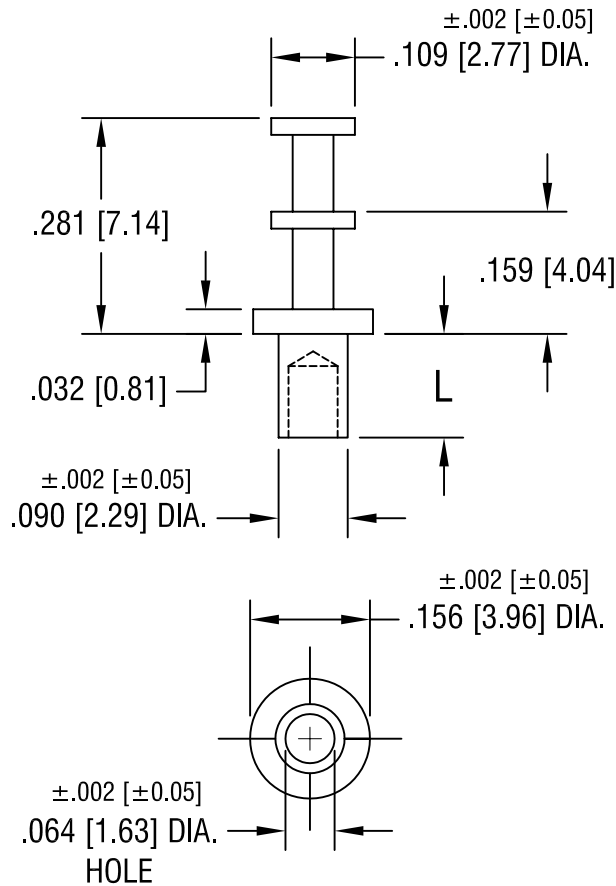


THIS DOCUMENT IS THE PROPERTY OF
KEYSTONE ELECTRONICS CORP. AND
SHALL NOT BE REPRODUCED, DISTRIBUTED
OR USED AS A BASIS FOR MANUFACTURE
WITHOUT PRIOR WRITTEN PERMISSION
FROM KEYSTONE ELECTRONICS CORP.



PART NO.	'L' DIM.
1514-1	.075 [1.91]
1514-2	.105 [2.67]
1514-3	.135 [3.43]
1514-4	.165 [4.19]

KEYSTONE ELECTRONICS CORP.			
ASTORIA, N.Y. 11105-2017			
PART NAME SOLDER TERMINAL, DOUBLE TURRET			
MATERIAL BRASS			
FINISH TIN PLATE		DRN BY BOONE	DATE 5.29.02
		APP'D LN	SCALE 4X
TOLERANCES INCH [MM]	CODE	DWG NO.	
DECIMAL ±.005 [±0.15]	C	1514-	
ANGULAR ± 1° UNLESS OTHERWISE SPECIFIED			

2.14.08	CHANGE AS PER ECN 08-082	A
DATE	DESCRIPTION	REV.