



## Socket; with strain relief housing; 3-pole; Cod. A

Item No.: 770-203/035-000



Socket; with strain relief housing; 3-pole; Cod. A

Business data	
Supplier	WAGO
Item no.	770-203/035-000
GTIN / EAN	4055143209168
Content	1
Order amount	25
Customer item number	

### Notes

*Note: All connectors for mounted installations (snap-in versions for lighting fixtures or devices, all types of PCB and distribution connectors) are factory-equipped with locking levers to ensure plugs and sockets are securely locked. Additional locking levers are only required for flying leads (plug/socket). IP20, with strain relief housing (These compact connectors are not designed for use in open, easily accessible areas) All WINSTA® components are 100% protected against mismatching in terms of: a.) plugging different number of poles b.) plugging when turned by 180° c.) plugging when laterally staggered d.) plugging one pole*  
*Note on Continuous Service Temperature: -35°C ... +85°C PVC cable for temperatures 70 °C (including halogen-free) Insulating parts for temperatures 105 °C*

### Technical data

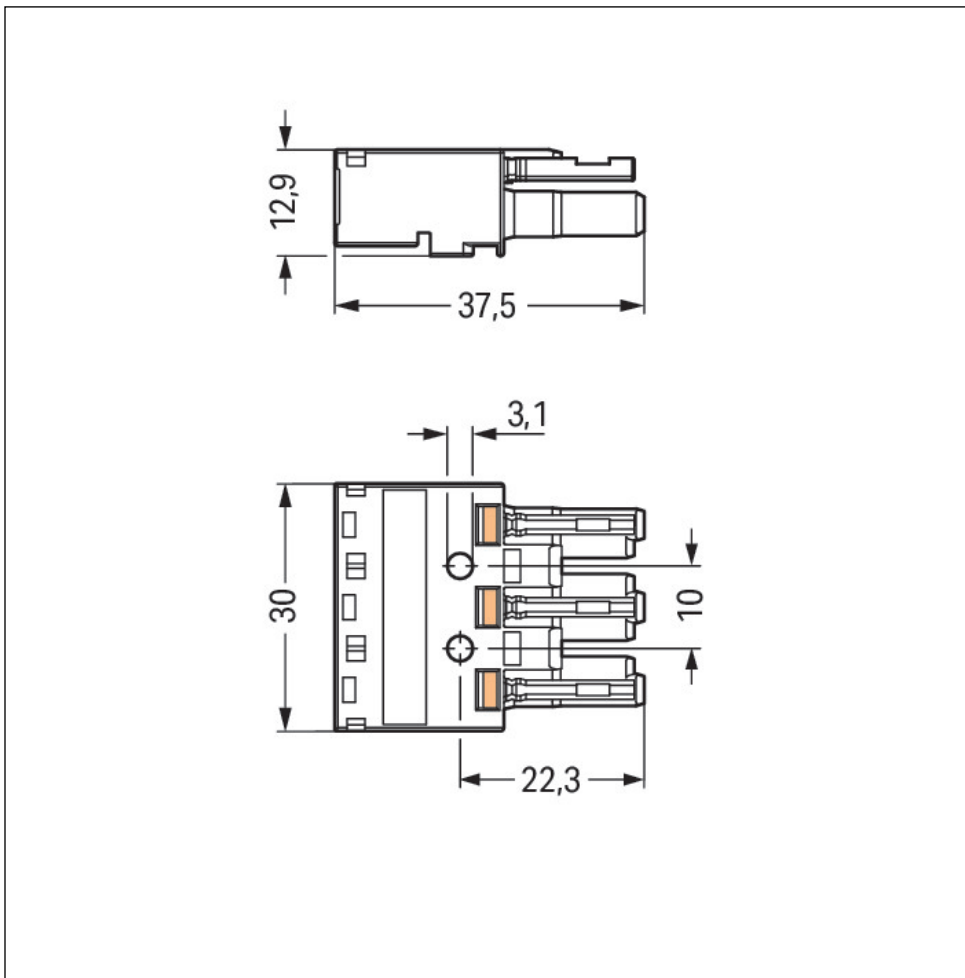
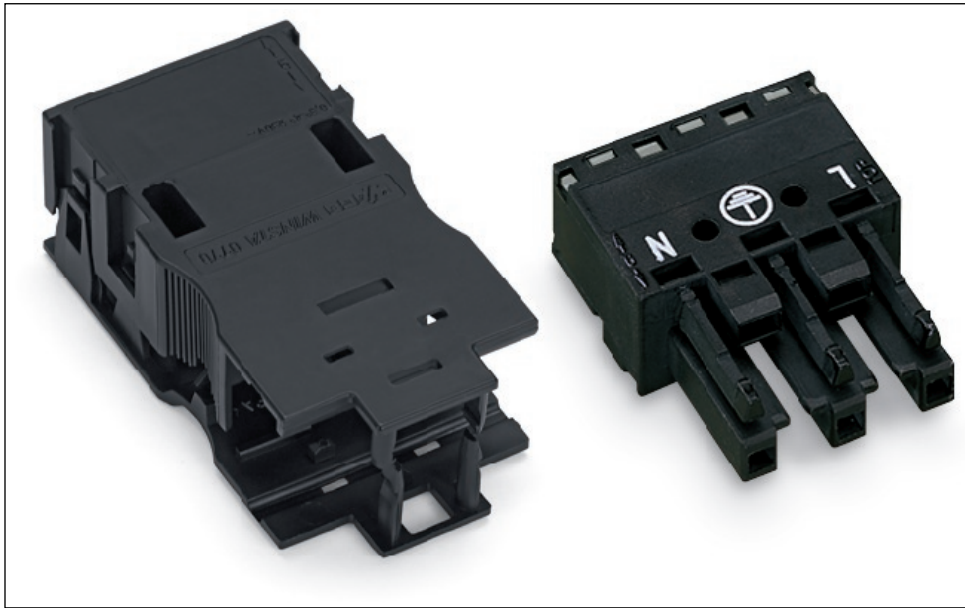
#### Miscellaneous

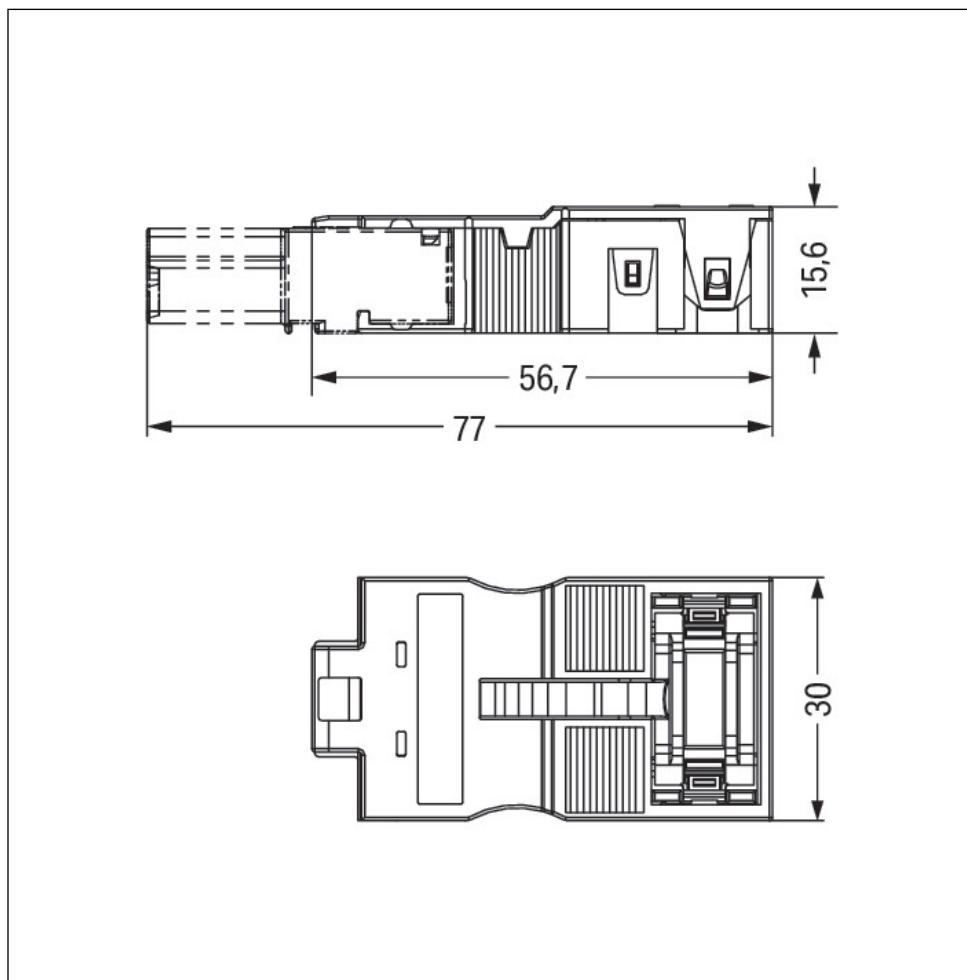
Connection technology	Push-in CAGE CLAMP®
Actuation type	Operating tool
Nominal cross section	4 mm <sup>2</sup>
Solid conductor	0.5 ... 4 mm <sup>2</sup> / 20 ... 12 AWG

<b>Technical data</b>	
<i>Solid conductor, push-in termination</i>	1.5 ... 4 mm <sup>2</sup> / 16 ... 12 AWG
<i>Stranded conductor</i>	0.5 ... 2.5 mm <sup>2</sup> / 20 ... 14 AWG
<i>Fine-stranded conductor</i>	0.5 ... 4 mm <sup>2</sup> / 20 ... 12 AWG
<i>Fine-stranded conductor with ferrule with plastic collar</i>	0.25 ... 1.5 mm <sup>2</sup> / 20 ... 16 AWG
<i>Fine-stranded conductor with ferrule without plastic collar</i>	0.25 ... 2.5 mm <sup>2</sup> / 20 ... 14 AWG
<i>Fine-stranded conductor with ferrule, push-in termination, f</i>	1.5 mm <sup>2</sup> / 16 AWG
<i>Strip length</i>	9 mm / 0.35 Inch
<i>No. of poles</i>	3
<i>Total number of connection points</i>	6
<i>Total number of potentials</i>	3
<i>Connectable sheathed cable diameter</i>	7 ... 11.5 mm
<i>Pin spacing</i>	10&nbsp;mm (0.394&nbsp;in)
<i>Width</i>	30 mm / 1.181 in
<i>Height</i>	15.6 mm / 0.614 in
<i>Depth</i>	77 mm / 3.031 in
<i>Coding</i>	A
<i>Mating force of a plug-in connection</i>	approx. 20 ... 70 N (depending on pole number)
<i>Retention force of a plug-in connection</i>	when locked: > 80N
<i>Unmating force of a plug-in connection</i>	when unlocked: approx. 20 ... 70 N (depending on pole number)
<i>Marking</i>	L &#9178; N
<i>Degree of protection</i>	IP 2xD
<i>Potential marking</i>	L &#9178; N
<i>Contact type (pluggable connector)</i>	Female connector/socket
<i>Connector connection type</i>	for conductors
<i>Mismating protection</i>	Yes
<i>Locking of plug-in connection</i>	locking lever
<i>Locking lever</i>	no
<i>Color</i>	black
<i>Insulating material</i>	Polyamide 66 (PA 66)
<i>Flammability class per UL94</i>	V0
<i>Clamping spring material</i>	Chrome nickel spring steel (CrNi)
<i>Contact material</i>	Copper or copper alloy, surface-treated
<i>Fire load [MJ]</i>	0.403 [MJ]

<b>Technical data</b>	
<i>Strain relief color</i>	<i>black</i>
<i>Weight [g]</i>	<i>17.585 [g]</i>
<i>Surrounding air (operating) temperature</i>	<i>-35 ... 85 °C</i>
<i>Processing temperature</i>	<i>-5°C ... +40°C</i>
<i>Continuous operating temperature from [°C]</i>	<i>-35 [°C]</i>
<i>Continuous operating temperature up to [°C]</i>	<i>85 [°C]</i>
<i>Packaging type</i>	<i>BOX</i>
<i>[mm]</i>	<i>30 [mm]</i>
<i>Pin spacing from [in]</i>	<i>0.394 [in]</i>
<i>Pin spacing from [mm]</i>	<i>10 [mm]</i>
<i>Contact type</i>	<i>Female connector/socket; for conductors</i>
<i>Product Family</i>	<i>WINSTA MIDI</i>
<i>Main product function</i>	<i>Female connector/socket</i>
<i>Product type</i>	<i>Pluggable installation connector</i>

Images & drawings





**Address**

WAGO Kontakttechnik GmbH & Co. KG

Hansastr. 27

32423 Minden

Telefon: 0571/887-0

Fax: 0571/887-169

<http://www.wago.com>

© WAGO Kontakttechnik GmbH & Co. KG

Technische Änderungen und Irrtümer vorbehalten.