

CC102-2I23

RS232 to Isolator RS232 TX / RX / GND converter board

Introduction:

CC102-2I23 provides RS232 signal level transfer to 1 port isolator RS232 TX / RX signal level
 250 kbps data rate (speed depends on Host)
 Transmit Output Current 105mA
 Receive Output Current 105mA
 Support Isolator 3 Line

Isolator Spec:

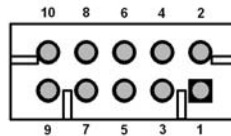
2.5 kV fully isolated (power and data) RS-232 transceiver ISO Power integrated, isolated dc-to-dc converter
 1 Tx and 1 Rx
 Meets EIA / TIA-232E specifications
 ESD protection on RIN and TOUT pins
 ±8 kV: contact discharge
 ±15 kV: air gap discharge
 0.1 μF charge pump capacitors
 High common-mode transient immunity: >25 kV/μs
 Safety and regulatory approvals
 UL recognition
 2500 V rms for 1 minute per UL 1577
 VDE Certificate of Conformity
 DIN EN 60747-5-2 (VDE 0884 Teil 2): 2003-01
 CSA Component Acceptance Notice #5A

Top

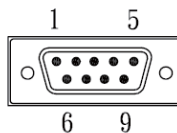


Features:

- Input (RS232 mode)



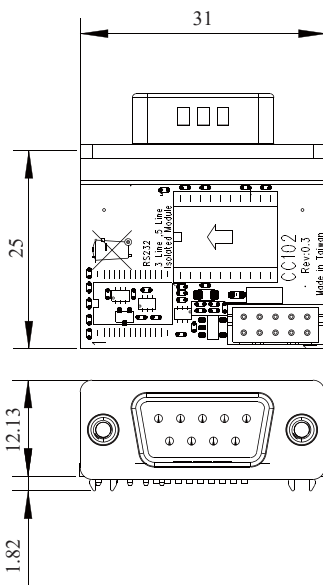
- Output (DB9)



PIN NO	DESCRIPTION	PIN NO	DESCRIPTION
1	NC	2	RXD+
3	TXD+	4	NC
5	GND	6	NC
7	NC	8	NC
9	NC	10	+5V

PIN NO	DESCRIPTION	PIN NO	DESCRIPTION
1	NC	2	ISO_RXD+
3	ISO_TXD+	4	NC
5	ISO_GND	6	NC
7	NC	8	NC
9	NC		

Mechanical Drawing:



Specification:

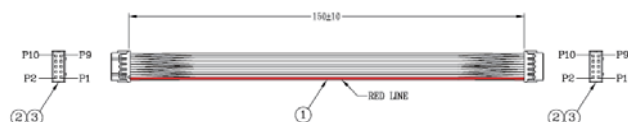
Type	RS232 to isolator RS232 TX / RX / GND
Input	2.0mm, 2 x 5 pin
Output port	D type 9 pin
Operating Temperature	-40°C ~ +85°C
Dimensions	31 x 25 mm

Ordering Information:

CC102-2I23: 7G5905-2101001-0 CC102-2I23-001

Cable Information:

6G6001-0105-0100 L=15cm 2.0 2 x 5 to 2.0 2 x 5



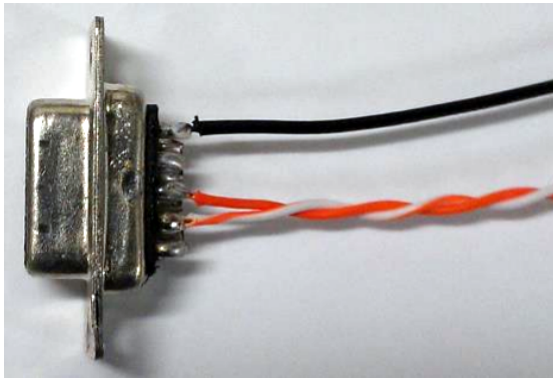
Specification are subject to change without prior notice. ODM / OEM is available.

CC102-2123

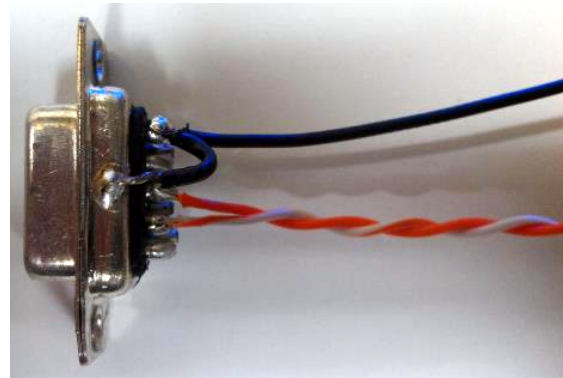
RS232 to Isolator RS232 TX / RX / GND converter board

■ **Galvanic isolation note:**

Do not connect ISO GND to the DSUB connector housing, otherwise you will remove the galvanic insulation..



OK



Not OK