

UT 2,5 BU - Feed-through terminal block



3044089

<https://www.phoenixcontact.com/za/products/3044089>

Please be informed that the data shown in this PDF document is generated from our Online Catalog. Please find the complete data in the user documentation. Our General Terms of Use for Downloads are valid.



Feed-through terminal block, nom. voltage: 1000 V, nominal current: 24 A, connection method: Screw connection, Rated cross section: 2.5 mm², cross section: 0.14 mm² - 4 mm², mounting type: NS 35/7,5, NS 35/15, color: blue

Your advantages

- The large wiring space enables the connection of solid and stranded conductors without ferrules, even above the nominal cross section
- As well as saving space, the compact design enables user-friendly wiring in a small amount of space
- Optimum screwdriver guidance through closed screw shafts
- The cable entry funnel enables the use of conductors with ferrules and plastic collars within the nominal cross section
- Tested for railway applications

Commercial Data

Item number	3044089
Packing unit	50 pc
Minimum order quantity	1 pc
Sales Key	018
Product Key	BE1111
Catalog Page	Page 149 (C-1-2019)
GTIN	4017918960353
Weight per Piece (including packing)	7,819 g
Weight per Piece (excluding packing)	7,333 g
Customs tariff number	85369010
Country of origin	DE

UT 2,5 BU - Feed-through terminal block



3044089

<https://www.phoenixcontact.com/za/products/3044089>

Technical Data

Product properties

Product type	Feed-through terminal block
Area of application	Railway industry
	Machine building
	Plant engineering
	Process industry
Number of connections	2
Number of rows	1
Potentials	1

Insulation characteristics

Overvoltage category	III
Degree of pollution	3

Electrical properties

Rated surge voltage	8 kV
Maximum power dissipation for nominal condition	0.77 W

Connection data

Number of connections per level	2
Nominal cross section	2.5 mm ²
Rated cross section AWG	12

Level 1 above 1 below 1

Screw thread	M3
Tightening torque	0.5 ... 0.6 Nm
Stripping length	9 mm
Internal cylindrical gage	A3
Connection in acc. with standard	IEC 60947-7-1
Conductor cross section rigid	0.14 mm ² ... 4 mm ²
Cross section AWG	26 ... 12 (converted acc. to IEC)
Conductor cross section flexible	0.14 mm ² ... 4 mm ²
Conductor cross section, flexible [AWG]	26 ... 12 (converted acc. to IEC)
Conductor cross-section flexible (ferrule without plastic sleeve)	0.14 mm ² ... 2.5 mm ²
Flexible conductor cross section (ferrule with plastic sleeve)	0.14 mm ² ... 2.5 mm ²
2 conductors with same cross section, solid	0.14 mm ² ... 1.5 mm ²
2 conductors with same cross section, flexible	0.14 mm ² ... 1.5 mm ²
2 conductors with same cross section, flexible, with ferrule without plastic sleeve	0.14 mm ² ... 1.5 mm ²
2 conductors with the same cross section, flexible, with TWIN ferrule with plastic sleeve	0.5 mm ² ... 1.5 mm ²
Nominal current	24 A
Maximum load current	32 A (with 4 mm ² conductor cross section)

UT 2,5 BU - Feed-through terminal block



3044089

<https://www.phoenixcontact.com/za/products/3044089>

Nominal voltage	1000 V
Note	Note: Product releases, connection cross sections and notes on connecting aluminum cables can be found in the download area.
Nominal cross section	2.5 mm ²

Ex data

Rated data (ATEX/IECEX)

Identification	□ II 2 GD Ex eb IIC Gb
Operating temperature range	-60 °C ... 110 °C
Ex-certified accessories	3047028 D-UT 2,5/10
	3047167 ATP-UT
	1205053 SZS 0,6X3,5
	3022276 CLIPFIX 35-5
	3022218 CLIPFIX 35
List of bridges	Plug-in bridge / FBS 2-5 / 3030161
	Plug-in bridge / FBS 3-5 / 3030174
	Plug-in bridge / FBS 4-5 / 3030187
	Plug-in bridge / FBS 5-5 / 3030190
	Plug-in bridge / FBS 10-5 / 3030213
	Plug-in bridge / FBS 20-5 / 3030226
Bridge data	21 A / 2.5 mm ²
Ex temperature increase	40 K (23.3 A / 2.5 mm ²)
Rated voltage	690 V
for bridging with bridge	690 V
- At bridging between non-adjacent terminal blocks	352 V
- At bridging between non-adjacent terminal blocks via PE terminal block	275 V
- At cut-to-length bridging with cover	220 V
- At cut-to-length bridging with partition plate	275 V
Rated insulation voltage	630 V
output	(Permanent)

Ex level General

Rated current	21 A
Maximum load current	28 A
Contact resistance	0.41 mΩ

Ex connection data General

Torque range	0.5 Nm ... 0.6 Nm
Nominal cross section	2.5 mm ²
Rated cross section AWG	14
Connection capacity rigid	0.14 mm ² ... 4 mm ²
Connection capacity AWG	26 ... 12
Connection capacity flexible	0.14 mm ² ... 2.5 mm ²
Connection capacity AWG	26 ... 14

UT 2,5 BU - Feed-through terminal block



3044089

<https://www.phoenixcontact.com/za/products/3044089>

2 conductors with same cross section, solid	0.14 mm ² ... 1.5 mm ²
2 conductors with the same cross-section AWG rigid	26 ... 16
2 conductors with same cross section, stranded	0.14 mm ² ... 1.5 mm ²
2 conductors with the same cross-section AWG flexible	26 ... 16

Dimensions

Width	5.2 mm
End cover width	2.2 mm
Height	46.9 mm
Height NS 35/15	55 mm
Height NS 35/7,5	47.5 mm
Length	47.7 mm

Material specifications

Color	blue
Flammability rating according to UL 94	V0
Insulating material group	I
Insulating material	PA
Static insulating material application in cold	-60 °C
Temperature index of insulation material (DIN EN 60216-1 (VDE 0304-21))	125 °C
Relative insulation material temperature index (Elec., UL 746 B)	130 °C
Fire protection for rail vehicles (DIN EN 45545-2) R22	HL 1 - HL 3
Fire protection for rail vehicles (DIN EN 45545-2) R23	HL 1 - HL 3
Fire protection for rail vehicles (DIN EN 45545-2) R24	HL 1 - HL 3
Fire protection for rail vehicles (DIN EN 45545-2) R26	HL 1 - HL 3
Calorimetric heat release NFPA 130 (ASTM E 1354)	28 MJ/kg
Surface flammability NFPA 130 (ASTM E 162)	passed
Specific optical density of smoke NFPA 130 (ASTM E 662)	passed
Smoke gas toxicity NFPA 130 (SMP 800C)	passed

Electrical tests

Surge voltage test

Test voltage setpoint	9.8 kV
Result	Test passed

Temperature-rise test

Requirement temperature-rise test	Increase in temperature ≤ 45 K
Result	Test passed
Short-time withstand current 2.5 mm ²	0.3 kA
Short-time withstand current 4 mm ²	0.48 kA
Result	Test passed

Power-frequency withstand voltage

Test voltage setpoint	2.2 kV
-----------------------	--------

UT 2,5 BU - Feed-through terminal block



3044089

<https://www.phoenixcontact.com/za/products/3044089>

Result	Test passed
--------	-------------

Mechanical properties

Mechanical data

Open side panel	Yes
-----------------	-----

Mechanical tests

Mechanical strength

Result	Test passed
--------	-------------

Attachment on the carrier

DIN rail/fixing support	NS 35
Test force setpoint	1 N
Result	Test passed

Test for conductor damage and slackening

Rotation speed	10 rpm
Revolutions	135
Conductor cross section/weight	0.14 mm ² / 0.2 kg
	2.5 mm ² / 0.7 kg
	4 mm ² / 0.9 kg
Result	Test passed

Environmental and real-life conditions

Needle-flame test

Time of exposure	30 s
Result	Test passed

Oscillation/broadband noise

Specification	DIN EN 50155 (VDE 0115-200):2008-03
Spectrum	Service life test category 1, class B, body mounted
Frequency	$f_1 = 5 \text{ Hz}$ to $f_2 = 150 \text{ Hz}$
ASD level	1.857 (m/s ²) ² /Hz
Acceleration	0.8g
Test duration per axis	5 h
Test directions	X-, Y- and Z-axis
Result	Test passed

Shocks

Specification	DIN EN 50155 (VDE 0115-200):2008-03
Pulse shape	Half-sine
Acceleration	5g
Shock duration	30 ms
Number of shocks per direction	3
Test directions	X-, Y- and Z-axis (pos. and neg.)

UT 2,5 BU - Feed-through terminal block



3044089

<https://www.phoenixcontact.com/za/products/3044089>

Result	Test passed
--------	-------------

Ambient conditions

Ambient temperature (operation)	-60 °C ... 105 °C (max. short-term operating temperature RTI Elec.)
Ambient temperature (storage/transport)	-25 °C ... 60 °C (for a short time, not exceeding 24 h, -60 °C to +70 °C)
Ambient temperature (assembly)	-5 °C ... 70 °C
Ambient temperature (actuation)	-5 °C ... 70 °C
Permissible humidity (storage/transport)	30 % ... 70 %

Standards and regulations

Connection in acc. with standard	IEC 60947-7-1
----------------------------------	---------------

Mounting

Mounting type	NS 35/7,5
	NS 35/15

UT 2,5 BU - Feed-through terminal block

3044089

<https://www.phoenixcontact.com/za/products/3044089>



Drawings

Circuit diagram




UT 2,5 BU - Feed-through terminal block



3044089


<https://www.phoenixcontact.com/za/products/3044089>

Approvals

 CSA Approval ID: 13631				
	Nominal Voltage U_N	Nominal Current I_N	Cross Section AWG	Cross Section mm^2
Use group B	600 V	20 A	26 - 12	-
Use group C	600 V	20 A	26 - 12	-

 IECEE CB Scheme Approval ID: DE1-63061_M1				
	Nominal Voltage U_N	Nominal Current I_N	Cross Section AWG	Cross Section mm^2
	1000 V	24 A	-	0.2 - 2.5

 EAC Approval ID: RU C-DE.AI30.B.01102				
---	--	--	--	--

 cULus Recognized Approval ID: E60425				
	Nominal Voltage U_N	Nominal Current I_N	Cross Section AWG	Cross Section mm^2
Use group B	600 V	20 A	26 - 12	-
Multi-conductor connection	600 V	20 A	26 - 16	-
Use group C	600 V	20 A	26 - 12	-
Multi-conductor connection	600 V	20 A	26 - 16	-

 LR Approval ID: LR2003762TA				
---	--	--	--	--

 VDE Zeichengenehmigung Approval ID: 40013658				
	Nominal Voltage U_N	Nominal Current I_N	Cross Section AWG	Cross Section mm^2
	1000 V	24 A	-	0.2 - 2.5

 ATEX Approval ID: KEMA04ATEX2048U				
---	--	--	--	--

UT 2,5 BU - Feed-through terminal block



3044089

<https://www.phoenixcontact.com/za/products/3044089>

	Nominal Voltage U_N	Nominal Current I_N	Cross Section AWG	Cross Section mm^2
Only flexible conductors	690 V	21 A	-	0.14 - 2.5
Only rigid conductors	690 V	28 A	-	0.14 - 4



cUL Recognized
Approval ID: E192998

	Nominal Voltage U_N	Nominal Current I_N	Cross Section AWG	Cross Section mm^2
Use group B				
	600 V	20 A	26 - 12	-
Use group C				
	600 V	20 A	26 - 12	-



EAC Ex
Approval ID: RU C-DE.HA91.B.00066



IECEX
Approval ID: IECEX KEM 06.0027U

	Nominal Voltage U_N	Nominal Current I_N	Cross Section AWG	Cross Section mm^2
Only flexible conductors	690 V	21 A	-	0.14 - 2.5
Only rigid conductors	690 V	28 A	-	0.14 - 4



UL Recognized
Approval ID: E192998

	Nominal Voltage U_N	Nominal Current I_N	Cross Section AWG	Cross Section mm^2
Use group B				
	600 V	20 A	26 - 12	-
Use group C				
	600 V	20 A	26 - 12	-



CCC
Approval ID: 2020322313000622



NEPSI
Approval ID: GYJ20.1194U



UKCA-EX
Approval ID: DEKRA 21UKEX0304U

UT 2,5 BU - Feed-through terminal block

3044089

<https://www.phoenixcontact.com/za/products/3044089>



UT 2,5 BU - Feed-through terminal block



3044089

<https://www.phoenixcontact.com/za/products/3044089>

Classifications

ECLASS

ECLASS-11.0

27141120

ETIM

ETIM 8.0

EC000897

UNSPSC

UNSPSC 21.0

39121400

UT 2,5 BU - Feed-through terminal block



3044089

<https://www.phoenixcontact.com/za/products/3044089>

Environmental Product Compliance

REACH SVHC	Lead 7439-92-1
China RoHS	Environmentally Friendly Use Period = 50 years
	For information on hazardous substances, refer to the manufacturer's declaration available under "Downloads"

UT 2,5 BU - Feed-through terminal block

3044089

<https://www.phoenixcontact.com/za/products/3044089>

Accessories

 Note: Applying some accessories below might limit this product.

FBS 2-5 - Plug-in bridge

3030161

<https://www.phoenixcontact.com/za/products/3030161>



Plug-in bridge, pitch: 5.2 mm, number of positions: 2, length: 23 mm, color: red

 Max. current carrying capacity: 24 A

FBS 3-5 - Plug-in bridge

3030174

<https://www.phoenixcontact.com/za/products/3030174>



Plug-in bridge, pitch: 5.2 mm, number of positions: 3, length: 23 mm, color: red

 Max. current carrying capacity: 24 A

UT 2,5 BU - Feed-through terminal block

3044089

<https://www.phoenixcontact.com/za/products/3044089>



FBS 4-5 - Plug-in bridge

3030187

<https://www.phoenixcontact.com/za/products/3030187>



Plug-in bridge, pitch: 5.2 mm, number of positions: 4, length: 23 mm, color: red

 Max. current carrying capacity: 24 A

FBS 5-5 - Plug-in bridge

3030190

<https://www.phoenixcontact.com/za/products/3030190>



Plug-in bridge, pitch: 5.2 mm, number of positions: 5, length: 23 mm, color: red

 Max. current carrying capacity: 24 A

UT 2,5 BU - Feed-through terminal block

3044089

<https://www.phoenixcontact.com/za/products/3044089>



FBS 10-5 - Plug-in bridge

3030213

<https://www.phoenixcontact.com/za/products/3030213>



Plug-in bridge, pitch: 5.2 mm, number of positions: 10, length: 23 mm, color: red

 Max. current carrying capacity: 24 A


FBS 20-5 - Plug-in bridge

3030226

<https://www.phoenixcontact.com/za/products/3030226>



Plug-in bridge, pitch: 5.2 mm, number of positions: 20, color: red

 Max. current carrying capacity: 24 A

UT 2,5 BU - Feed-through terminal block

3044089

<https://www.phoenixcontact.com/za/products/3044089>



FBS 50-5 - Plug-in bridge

3038930

<https://www.phoenixcontact.com/za/products/3038930>



Plug-in bridge, pitch: 5.2 mm, number of positions: 50, color: red

 Max. current carrying capacity: 24 A

FBSR 2-5 - Plug-in bridge

3033702

<https://www.phoenixcontact.com/za/products/3033702>



Plug-in bridge, pitch: 5.2 mm, number of positions: 2, color: red

 Max. current carrying capacity: 17.5 A

UT 2,5 BU - Feed-through terminal block

3044089

<https://www.phoenixcontact.com/za/products/3044089>




FBSR 3-5 - Plug-in bridge

3001591

<https://www.phoenixcontact.com/za/products/3001591>



Plug-in bridge, pitch: 5.2 mm, number of positions: 3, color: red

 Max. current carrying capacity: 17.5 A

FBSR 4-5 - Plug-in bridge

3001592

<https://www.phoenixcontact.com/za/products/3001592>



Plug-in bridge, pitch: 5.2 mm, number of positions: 4, color: red

 Max. current carrying capacity: 17.5 A

UT 2,5 BU - Feed-through terminal block

3044089

<https://www.phoenixcontact.com/za/products/3044089>




FBSR 5-5 - Plug-in bridge

3001593

<https://www.phoenixcontact.com/za/products/3001593>

Plug-in bridge, pitch: 5.2 mm, number of positions: 5, color: red



 Max. current carrying capacity: 17.5 A

FBSR 10-5 - Plug-in bridge

3033710

<https://www.phoenixcontact.com/za/products/3033710>

Plug-in bridge, pitch: 5.2 mm, number of positions: 10, color: red



 Max. current carrying capacity: 17.5 A

UT 2,5 BU - Feed-through terminal block

3044089

<https://www.phoenixcontact.com/za/products/3044089>



FBS 2-5 BU - Plug-in bridge

3036877

<https://www.phoenixcontact.com/za/products/3036877>



Plug-in bridge, pitch: 5.2 mm, number of positions: 2, color: blue

 Max. current carrying capacity: 24 A

FBS 3-5 BU - Plug-in bridge

3036880

<https://www.phoenixcontact.com/za/products/3036880>



Plug-in bridge, pitch: 5.2 mm, number of positions: 3, color: blue

 Max. current carrying capacity: 24 A

UT 2,5 BU - Feed-through terminal block

3044089

<https://www.phoenixcontact.com/za/products/3044089>




FBS 4-5 BU - Plug-in bridge

3036893

<https://www.phoenixcontact.com/za/products/3036893>



Plug-in bridge, pitch: 5.2 mm, number of positions: 4, color: blue

 Max. current carrying capacity: 24 A

FBS 5-5 BU - Plug-in bridge

3036903

<https://www.phoenixcontact.com/za/products/3036903>



Plug-in bridge, pitch: 5.2 mm, number of positions: 5, color: blue

 Max. current carrying capacity: 24 A

UT 2,5 BU - Feed-through terminal block

3044089

<https://www.phoenixcontact.com/za/products/3044089>




FBS 10-5 BU - Plug-in bridge

3036916

<https://www.phoenixcontact.com/za/products/3036916>



Plug-in bridge, pitch: 5.2 mm, number of positions: 10, color: blue

 Max. current carrying capacity: 24 A


FBS 20-5 BU - Plug-in bridge

3036929

<https://www.phoenixcontact.com/za/products/3036929>



Plug-in bridge, pitch: 5.2 mm, number of positions: 20, color: blue

 Max. current carrying capacity: 24 A

UT 2,5 BU - Feed-through terminal block

3044089

<https://www.phoenixcontact.com/za/products/3044089>



FBS 50-5 BU - Plug-in bridge

3032114

<https://www.phoenixcontact.com/za/products/3032114>



Plug-in bridge, pitch: 5.2 mm, number of positions: 50, color: blue

 Max. current carrying capacity: 24 A

RB ST 10-(2,5/4) - Reducing bridge

3030873

<https://www.phoenixcontact.com/za/products/3030873>



Reducing bridge, pitch: 10 mm, number of positions: 2, length: 36 mm, color: red

 Max. current carrying capacity: 35 A

UT 2,5 BU - Feed-through terminal block

3044089

<https://www.phoenixcontact.com/za/products/3044089>




RB UT 10-(2,5/4) - Reducing bridge

3047060

<https://www.phoenixcontact.com/za/products/3047060>



Reducing bridge, pitch: 10.2 mm, number of positions: 2, length: 29 mm, color: red

 Max. current carrying capacity: 40 A


RB UT 35-(2,5/4) - Reducing bridge

3047277

<https://www.phoenixcontact.com/za/products/3047277>



Reducing bridge, pitch: 11 mm, number of positions: 2, color: red

 Max. current carrying capacity: 40 A

UT 2,5 BU - Feed-through terminal block

3044089

<https://www.phoenixcontact.com/za/products/3044089>




RB UT 16-(2,5/4) - Reducing bridge

3047073

<https://www.phoenixcontact.com/za/products/3047073>



Reducing bridge, pitch: 11 mm, number of positions: 2, length: 31 mm, color: red

 Max. current carrying capacity: 40 A


RB UT 6-(2,5/4) - Reducing bridge

3047251

<https://www.phoenixcontact.com/za/products/3047251>



Reducing bridge, pitch: 9.5 mm, number of positions: 2, length: 25 mm, color: red

 Max. current carrying capacity: 40 A

UT 2,5 BU - Feed-through terminal block



3044089

<https://www.phoenixcontact.com/za/products/3044089>

D-UT 2,5/10 - End cover

3047028

<https://www.phoenixcontact.com/za/products/3047028>

End cover, length: 47 mm, width: 2.2 mm, height: 39.8 mm, color: gray



D-UT 2,5/10 BU - End cover

3047235

<https://www.phoenixcontact.com/za/products/3047235>

End cover, length: 47 mm, width: 2.2 mm, height: 39.8 mm, color: blue



UT 2,5 BU - Feed-through terminal block

3044089

<https://www.phoenixcontact.com/za/products/3044089>



ATP-UT - Partition plate

3047167

<https://www.phoenixcontact.com/za/products/3047167>



Partition plate, length: 53.4 mm, width: 2.2 mm, height: 45.7 mm, color: gray

SZS 0,6X3,5 - Screwdriver

1205053

<https://www.phoenixcontact.com/za/products/1205053>



Actuation tool, for ST terminal blocks, insulated, also suitable for use as a bladed screwdriver, size: 0.6 x 3.5 x 100 mm, 2-component grip, with non-slip grip

UT 2,5 BU - Feed-through terminal block

3044089

<https://www.phoenixcontact.com/za/products/3044089>

X-PEN 0,35 - Marker pen

0811228

<https://www.phoenixcontact.com/za/products/0811228>



Marker pen without ink cartridge, for manual labeling of markers, labeling extremely wipe-proof, line thickness 0.35 mm

WS UT 2,5 - Warning label

3047923

<https://www.phoenixcontact.com/za/products/3047923>

Warning sign for UT terminal blocks



UT 2,5 BU - Feed-through terminal block

3044089

<https://www.phoenixcontact.com/za/products/3044089>



P-CO 2-5 R47K - Component connector

3032447

<https://www.phoenixcontact.com/za/products/3032447>



Component connector, with 47 kOhm resistance for wire-break monitoring, pitch: 5.2 mm, length: 8.9 mm, width: 4.1 mm, height: 34.8 mm, number of positions: 2, color: black

SF-SL 0,6X3,5-100 S-VDE - Screwdriver

1212587

<https://www.phoenixcontact.com/za/products/1212587>



Actuation tool, for ST terminal blocks, VDE insulated, with slimmer insulation integrated in the blade, also suitable for use as a bladed screwdriver, size: 0.6 x 3.5 x 100 mm, 2-component grip, with non-slip grip

UT 2,5 BU - Feed-through terminal block

3044089

<https://www.phoenixcontact.com/za/products/3044089>



NS 35/ 7,5 PERF 2000MM - DIN rail perforated

0801733

<https://www.phoenixcontact.com/za/products/0801733>



DIN rail perforated, acc. to EN 60715, material: Steel, galvanized, passivated with a thick layer, Standard profile, color: silver, Pack of 25 (50 m)

NS 35/ 7,5 UNPERF 2000MM - DIN rail, unperforated

0801681

<https://www.phoenixcontact.com/za/products/0801681>



DIN rail, unperforated, acc. to EN 60715, material: Steel, galvanized, passivated with a thick layer, Standard profile, color: silver, Pack of 25 (50 m)

UT 2,5 BU - Feed-through terminal block

3044089

<https://www.phoenixcontact.com/za/products/3044089>



NS 35/ 7,5 WH PERF 2000MM - DIN rail perforated

1204119

<https://www.phoenixcontact.com/za/products/1204119>



DIN rail perforated, acc. to EN 60715, material: Steel, Galvanized, white passivated, Standard profile, color: silver, Pack of 25 (50 m)

NS 35/ 7,5 WH UNPERF 2000MM-VPE 10 - DIN rail, unperforated

1204122

<https://www.phoenixcontact.com/za/products/1204122>



DIN rail, unperforated, acc. to EN 60715, material: Steel, Galvanized, white passivated, Standard profile, color: silver, Pack of 10 (20 m)

UT 2,5 BU - Feed-through terminal block

3044089

<https://www.phoenixcontact.com/za/products/3044089>



NS 35/ 7,5 AL UNPERF 2000MM - DIN rail, unperforated

0801704

<https://www.phoenixcontact.com/za/products/0801704>



DIN rail, unperforated, acc. to EN 60715, material: Aluminum, uncoated, Standard profile, color: silver, Pack of 25 (50 m)

NS 35/ 7,5 ZN PERF 2000MM - DIN rail perforated

1206421

<https://www.phoenixcontact.com/za/products/1206421>



DIN rail perforated, acc. to EN 60715, material: Steel, galvanized, Standard profile, color: silver, Pack of 25 (50 m)

UT 2,5 BU - Feed-through terminal block

3044089

<https://www.phoenixcontact.com/za/products/3044089>



NS 35/ 7,5 ZN UNPERF 2000MM - DIN rail, unperforated

1206434

<https://www.phoenixcontact.com/za/products/1206434>



DIN rail, unperforated, acc. to EN 60715, material: Steel, galvanized, Standard profile, color: silver, Pack of 25 (50 m)

NS 35/ 7,5 CU UNPERF 2000MM-VPE 10 - DIN rail, unperforated

0801762

<https://www.phoenixcontact.com/za/products/0801762>



DIN rail, unperforated, acc. to EN 60715, material: Copper, uncoated, Standard profile, color: copper-colored, Pack of 10 (20 m)

UT 2,5 BU - Feed-through terminal block

3044089

<https://www.phoenixcontact.com/za/products/3044089>



NS 35/ 7,5 CAP - End cap

1206560

<https://www.phoenixcontact.com/za/products/1206560>

DIN rail end piece, for DIN rail NS 35/7.5



NS 35/15 PERF 2000MM - DIN rail perforated

1201730

<https://www.phoenixcontact.com/za/products/1201730>



DIN rail perforated, similar to EN 60715, material: Steel, galvanized, passivated with a thick layer, Standard profile, color: silver, Pack of 25 (50 m)

UT 2,5 BU - Feed-through terminal block

3044089

<https://www.phoenixcontact.com/za/products/3044089>



NS 35/15 UNPERF 2000MM - DIN rail, unperforated

1201714

<https://www.phoenixcontact.com/za/products/1201714>



DIN rail, unperforated, similar to EN 60715, material: Steel, galvanized, passivated with a thick layer, Standard profile, color: silver, Pack of 25 (50 m)

NS 35/15 WH PERF 2000MM - DIN rail perforated

0806602

<https://www.phoenixcontact.com/za/products/0806602>



DIN rail perforated, similar to EN 60715, material: Steel, Galvanized, white passivated, Standard profile, color: white, Pack of 25 (50 m)

UT 2,5 BU - Feed-through terminal block

3044089

<https://www.phoenixcontact.com/za/products/3044089>



NS 35/15 WH UNPERF 2000MM-VPE 10 - DIN rail, unperforated

1204135

<https://www.phoenixcontact.com/za/products/1204135>



DIN rail, unperforated, similar to EN 60715, material: Steel, Galvanized, white passivated, Standard profile, color: silver, Pack of 10 (20 m)

NS 35/15 AL UNPERF 2000MM - DIN rail, unperforated

1201756

<https://www.phoenixcontact.com/za/products/1201756>



DIN rail, unperforated, similar to EN 60715, material: Aluminum, uncoated, Standard profile, color: silver

UT 2,5 BU - Feed-through terminal block

3044089

<https://www.phoenixcontact.com/za/products/3044089>



NS 35/15 ZN PERF 2000MM - DIN rail perforated

1206599

<https://www.phoenixcontact.com/za/products/1206599>



DIN rail perforated, similar to EN 60715, material: Steel, galvanized, Standard profile, color: silver, Pack of 25 (50 m)

NS 35/15 ZN UNPERF 2000MM - DIN rail, unperforated

1206586

<https://www.phoenixcontact.com/za/products/1206586>



DIN rail, unperforated, similar to EN 60715, material: Steel, galvanized, Standard profile, color: silver, Pack of 25 (50 m)

UT 2,5 BU - Feed-through terminal block

3044089

<https://www.phoenixcontact.com/za/products/3044089>



NS 35/15 CU UNPERF 2000MM-VPE 10 - DIN rail, unperforated

1201895

<https://www.phoenixcontact.com/za/products/1201895>



DIN rail, unperforated, similar to EN 60715, material: Copper, uncoated, Standard profile, color: copper-colored, Pack of 10 (20 m)

NS 35/15 CAP - End cap

1206573

<https://www.phoenixcontact.com/za/products/1206573>

DIN rail end piece, for DIN rail NS 35/15



UT 2,5 BU - Feed-through terminal block

3044089

<https://www.phoenixcontact.com/za/products/3044089>



NS 35/15-2,3 UNPERF 2000MM-VPE 10 - DIN rail, unperforated

1201798

<https://www.phoenixcontact.com/za/products/1201798>



DIN rail, unperforated, acc. to EN 60715, material: Steel, galvanized, passivated with a thick layer, Standard profile 2.3 mm, color: silver, Pack of 10 (20 m)

ZB 5 :UNBEDRUCKT - Zack marker strip

1050004

<https://www.phoenixcontact.com/za/products/1050004>



Zack marker strip, Strip, white, unlabeled, can be labeled with: PLOTMARK, CMS-P1-PLOTTER, mounting type: snapped, for terminal block width: 5.2 mm, lettering field size: 5.1 x 10.5 mm, Number of individual labels: 10

UT 2,5 BU - Feed-through terminal block

3044089

<https://www.phoenixcontact.com/za/products/3044089>



ZB 5 CUS - Zack marker strip

0824962

<https://www.phoenixcontact.com/za/products/0824962>

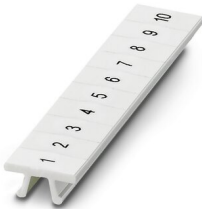


Zack marker strip, can be ordered: Strip, white, labeled according to customer specifications, mounting type: snap into tall marker groove, for terminal block width: 5.2 mm, lettering field size: 5.15 x 10.5 mm, Number of individual labels: 10

ZB 5,LGS:FORTL.ZAHLEN - Zack marker strip

1050017

<https://www.phoenixcontact.com/za/products/1050017>



Zack marker strip, Strip, white, labeled, printed horizontally: consecutive numbers 1 ... 10, 11 ... 20, etc. up to 491 ... 500, mounting type: snapped, for terminal block width: 5.2 mm, lettering field size: 5.15 x 10.5 mm, Number of individual labels: 10

UT 2,5 BU - Feed-through terminal block

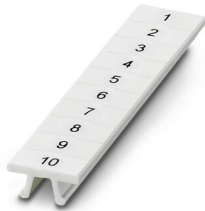
3044089

<https://www.phoenixcontact.com/za/products/3044089>

ZB 5,QR:FORTL.ZAHLEN - Zack marker strip

1050020

<https://www.phoenixcontact.com/za/products/1050020>



Zack marker strip, white, Printed vertically: consecutive numbers 1 ... 10, 11 ... 20, etc. up to 491 ... 500, mounting type: snapped, for terminal block width: 5.2 mm, lettering field size: 5.15 x 10.5 mm

ZB 5,LGS:GLEICHE ZAHLEN - Zack marker strip

1050033

<https://www.phoenixcontact.com/za/products/1050033>



Zack marker strip, Strip, white, labeled, can be labeled with: CMS-P1-PLOTTER, printed horizontally: Identical numbers 1 or 2, etc. up to 100, mounting type: snapped, for terminal block width: 5.2 mm, lettering field size: 5.15 x 10.5 mm, Number of individual labels: 10

UT 2,5 BU - Feed-through terminal block

3044089

<https://www.phoenixcontact.com/za/products/3044089>



ZB 5,LGS:L1-N,PE - Zack marker strip

1050415

<https://www.phoenixcontact.com/za/products/1050415>



Zack marker strip, Strip, white, labeled, horizontal: L1, L2, L3, N, PE, L1, L2, L3, N, PE, mounting type: snapped, for terminal block width: 5.2 mm, lettering field size: 5.15 x 10.5 mm, Number of individual labels: 10

UC-TM 5 - Marker for terminal blocks

0818108

<https://www.phoenixcontact.com/za/products/0818108>



Marker for terminal blocks, Sheet, white, unlabeled, can be labeled with: BLUEMARK ID COLOR, BLUEMARK ID, BLUEMARK CLED, PLOTMARK, CMS-P1-PLOTTER, mounting type: snapped, for terminal block width: 5.2 mm, lettering field size: 4.6 x 10.5 mm, Number of individual labels: 96

UT 2,5 BU - Feed-through terminal block

3044089

<https://www.phoenixcontact.com/za/products/3044089>



UC-TM 5 CUS - Marker for terminal blocks

0824581

<https://www.phoenixcontact.com/za/products/0824581>



Marker for terminal blocks, can be ordered: by sheet, white, labeled according to customer specifications, mounting type: snap into tall marker groove, for terminal block width: 5.2 mm, lettering field size: 10.5 x 4.6 mm, Number of individual labels: 96

UCT-TM 5 - Marker for terminal blocks

0828734

<https://www.phoenixcontact.com/za/products/0828734>



Marker for terminal blocks, Sheet, white, unlabeled, can be labeled with: TOPMARK NEO, TOPMARK LASER, BLUEMARK ID COLOR, BLUEMARK ID, BLUEMARK CLED, THERMOMARK PRIME, THERMOMARK CARD 2.0, THERMOMARK CARD, mounting type: snapped, for terminal block width: 5.2 mm, lettering field size: 4.6 x 10.5 mm, Number of individual labels: 72

UT 2,5 BU - Feed-through terminal block

3044089

<https://www.phoenixcontact.com/za/products/3044089>



UCT-TM 5 CUS - Marker for terminal blocks

0829595

<https://www.phoenixcontact.com/za/products/0829595>



Marker for terminal blocks, can be ordered: by sheet, white, labeled according to customer specifications, mounting type: snap into tall marker groove, for terminal block width: 5.2 mm, lettering field size: 4.6 x 10.5 mm, Number of individual labels: 72

GBS 5-25X12 - Group marker label for terminal marking

0810588

<https://www.phoenixcontact.com/za/products/0810588>



Group marker label, snaps onto terminal center for screw, spring-cage and quick connection terminal blocks, labeled with a 25 x 12 mm label or manually with the B-STIFT, in the foot part with ZB 5

UT 2,5 BU - Feed-through terminal block



3044089

<https://www.phoenixcontact.com/za/products/3044089>

GBS 5-25X5 - Group marker label for terminal marking

0829126

<https://www.phoenixcontact.com/za/products/0829126>



Group marking label, can be snapped into terminal center for screw, spring-cage, push-in, and fast connection terminal blocks, can be labeled with a 24 x 4 mm label or manually using B-STIFT, in the foot part with ZB 5

STP 5-2-ZB - Marker carriers

3037643

<https://www.phoenixcontact.com/za/products/3037643>



Marker carriers, snaps into ST 2,5 spring-cage terminal blocks, can be marked with UC-TM 5, UC-TMF 5, UCT-TM 5, UCT-TMF 5, ZB 5, or ZBF 5, gray, unlabeled, mounting type: plug in

UT 2,5 BU - Feed-through terminal block

3044089

<https://www.phoenixcontact.com/za/products/3044089>



MPS-MT - Test plugs

0201744

<https://www.phoenixcontact.com/za/products/0201744>



Test plugs, with solder connection up to 1 mm² conductor cross section, color: gray

MPS-IH WH - Insulating sleeve

0201663

<https://www.phoenixcontact.com/za/products/0201663>

Insulating sleeve, color: white



UT 2,5 BU - Feed-through terminal block

3044089

<https://www.phoenixcontact.com/za/products/3044089>



MPS-IH RD - Insulating sleeve

0201676

<https://www.phoenixcontact.com/za/products/0201676>

Insulating sleeve, color: red

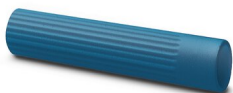


MPS-IH BU - Insulating sleeve

0201689

<https://www.phoenixcontact.com/za/products/0201689>

Insulating sleeve, color: blue



UT 2,5 BU - Feed-through terminal block

3044089

<https://www.phoenixcontact.com/za/products/3044089>



MPS-IH YE - Insulating sleeve

0201692

<https://www.phoenixcontact.com/za/products/0201692>

Insulating sleeve, color: yellow



MPS-IH GN - Insulating sleeve

0201702

<https://www.phoenixcontact.com/za/products/0201702>

Insulating sleeve, color: green



UT 2,5 BU - Feed-through terminal block

3044089

<https://www.phoenixcontact.com/za/products/3044089>



MPS-IH GY - Insulating sleeve

0201728

<https://www.phoenixcontact.com/za/products/0201728>

Insulating sleeve, color: gray



MPS-IH BK - Insulating sleeve

0201731

<https://www.phoenixcontact.com/za/products/0201731>

Insulating sleeve, color: black



UT 2,5 BU - Feed-through terminal block

3044089

<https://www.phoenixcontact.com/za/products/3044089>



PAI-4-FIX-5/6 BU - Test adapter

3035975

<https://www.phoenixcontact.com/za/products/3035975>



4 mm test adapter, for terminal blocks with 5.2 mm and 6.2 mm pitch

PAI-4-FIX-5/6 OG - Test adapter

3035974

<https://www.phoenixcontact.com/za/products/3035974>



4 mm test adapter, for terminal blocks with 5.2 mm and 6.2 mm pitch

UT 2,5 BU - Feed-through terminal block

3044089

<https://www.phoenixcontact.com/za/products/3044089>



PAI-4-FIX-5/6 YE - Test adapter

3035977

<https://www.phoenixcontact.com/za/products/3035977>



4 mm test adapter, for terminal blocks with 5.2 mm and 6.2 mm pitch

PAI-4-FIX-5/6 RD - Test adapter

3035976

<https://www.phoenixcontact.com/za/products/3035976>



4 mm test adapter, for terminal blocks with 5.2 mm and 6.2 mm pitch

UT 2,5 BU - Feed-through terminal block

3044089

<https://www.phoenixcontact.com/za/products/3044089>



PAI-4-FIX-5/6 GN - Test adapter

3035978

<https://www.phoenixcontact.com/za/products/3035978>



4 mm test adapter, for terminal blocks with 5.2 mm and 6.2 mm pitch

PAI-4-FIX-5/6 BK - Test adapter

3035980

<https://www.phoenixcontact.com/za/products/3035980>



4 mm test adapter, for terminal blocks with 5.2 mm and 6.2 mm pitch

UT 2,5 BU - Feed-through terminal block

3044089

<https://www.phoenixcontact.com/za/products/3044089>

PAI-4-FIX-5/6 GY - Test adapter

3035982

<https://www.phoenixcontact.com/za/products/3035982>



4 mm test adapter, for terminal blocks with 5.2 mm and 6.2 mm pitch

PAI-4-FIX-5/6 VT - Test adapter

3035979

<https://www.phoenixcontact.com/za/products/3035979>



4 mm test adapter, for terminal blocks with 5.2 mm and 6.2 mm pitch

UT 2,5 BU - Feed-through terminal block

3044089

<https://www.phoenixcontact.com/za/products/3044089>



PAI-4-FIX-5/6 BN - Test adapter

3035981

<https://www.phoenixcontact.com/za/products/3035981>



4 mm test adapter, for terminal blocks with 5.2 mm and 6.2 mm pitch

PAI-4-FIX-5/6 WH - Test adapter

3035983

<https://www.phoenixcontact.com/za/products/3035983>



4 mm test adapter, for terminal blocks with 5.2 mm and 6.2 mm pitch

UT 2,5 BU - Feed-through terminal block

3044089

<https://www.phoenixcontact.com/za/products/3044089>



PS-5 - Test plugs

3030983

<https://www.phoenixcontact.com/za/products/3030983>



Test plugs, Modular test plug, color: red

DP PS-5 - Spacer plate

3036725

<https://www.phoenixcontact.com/za/products/3036725>



Spacer plate, length: 22.4 mm, width: 5.2 mm, height: 29 mm, number of positions: 1, color: red

UT 2,5 BU - Feed-through terminal block

3044089

<https://www.phoenixcontact.com/za/products/3044089>



PS-5/2,3MM RD - Test plugs

3038723

<https://www.phoenixcontact.com/za/products/3038723>

Test plugs, color: red



CLIPFIX 35 - End clamp

3022218

<https://www.phoenixcontact.com/za/products/3022218>

Quick mounting end clamp for NS 35/7,5 DIN rail or NS 35/15 DIN rail, with marking option, width: 9.5 mm, color: gray



UT 2,5 BU - Feed-through terminal block

3044089

<https://www.phoenixcontact.com/za/products/3044089>



CLIPFIX 35-5 - End clamp

3022276

<https://www.phoenixcontact.com/za/products/3022276>

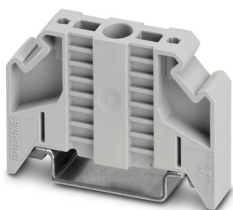


Quick mounting end clamp for NS 35/7,5 DIN rail or NS 35/15 DIN rail, with marking option, with parking option for FBS...5, FBS...6, KSS 5, KSS 6, width: 5.15 mm, color: gray

E/NS 35 N - End clamp

0800886

<https://www.phoenixcontact.com/za/products/0800886>



End clamp, width: 9.5 mm, color: gray

UT 2,5 BU - Feed-through terminal block

3044089

<https://www.phoenixcontact.com/za/products/3044089>



PAI-4-N GY - Test adapter

3032871

<https://www.phoenixcontact.com/za/products/3032871>



4 mm test adapter, for terminal blocks with 5.2 mm, 6.2 mm and 8.2 mm pitch

Phoenix Contact 2023 © - all rights reserved

<https://www.phoenixcontact.com>

PHOENIX CONTACT (Pty) Ltd.

36 Lyn Road P.O. Box 916 ZA-Ferndale 2160

+27/11/801-8200

info@phoenixcontact.co.za