

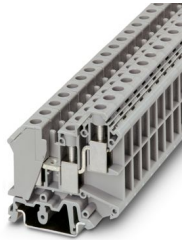
UK 10-TWIN - Feed-through terminal block



3005196

<https://www.phoenixcontact.com/sk/products/3005196>

Please be informed that the data shown in this PDF document is generated from our online catalog. Please find the complete data in the user documentation. Our general terms of use for downloads are valid.



1-level terminal block with double connection on one side, cross section: 0.5 - 10 mm², AWG: 24 - 6, width: 10.2 mm, color: gray

Your advantages

- These twin modular terminal blocks are designed for the basic task of potential branching
- Universal foot for mounting on NS 35.. or NS 32... DIN rails
- Two independent conductor connections can be used on the control cabinet side
- Easy connection of different types of conductors with different cross sections
- Can be bridged in the terminal center, even with neighboring feed-through terminal blocks aligned

Commercial data

Item number	3005196
Packing unit	50 pc
Minimum order quantity	1 pc
Sales key	BE1
Product key	BE1212
Catalog page	Page 467 (C-1-2019)
GTIN	4017918091132
Weight per piece (including packing)	27.44 g
Weight per piece (excluding packing)	26.3 g
Customs tariff number	85369010
Country of origin	TR

UK 10-TWIN - Feed-through terminal block



3005196

<https://www.phoenixcontact.com/sk/products/3005196>

Technical data

Product properties

Product type	Multi-conductor terminal block
Product family	UK
Number of connections	3
Number of rows	2
Potentials	1

Insulation characteristics

Overvoltage category	III
Degree of pollution	3

Electrical properties

Rated surge voltage	8 kV
Maximum power dissipation for nominal condition	1.82 W

Connection data

Number of connections per level	3
Nominal cross section	10 mm ²

1 level

Screw thread	M4
Tightening torque	1.5 ... 1.8 Nm
Stripping length	11 mm
Connection in acc. with standard	IEC 60947-7-1
Conductor cross section rigid	0.5 mm ² ... 16 mm ²
Cross section AWG	20 ... 6 (converted acc. to IEC)
Conductor cross section flexible	0.5 mm ² ... 10 mm ²
Conductor cross section, flexible [AWG]	20 ... 8 (converted acc. to IEC)
Conductor cross-section flexible (ferrule without plastic sleeve)	0.5 mm ² ... 10 mm ²
Flexible conductor cross section (ferrule with plastic sleeve)	0.5 mm ² ... 6 mm ²
2 conductors with same cross section, solid	0.5 mm ² ... 4 mm ²
2 conductors with same cross section, flexible	0.5 mm ² ... 4 mm ²
2 conductors with same cross section, flexible, with ferrule without plastic sleeve	0.5 mm ² ... 2.5 mm ²
2 conductors with the same cross section, flexible, with TWIN ferrule with plastic sleeve	0.5 mm ² ... 4 mm ²
Nominal current	57 A
Maximum load current	76 A (In case of a 16 mm ² conductor connection, the maximum load current must not be exceeded by the total current of all connected conductors.)
Nominal voltage	800 V
Nominal cross section	10 mm ²

Dimensions

UK 10-TWIN - Feed-through terminal block



3005196

<https://www.phoenixcontact.com/sk/products/3005196>

Width	10.2 mm
Height	56.5 mm
Depth on NS 32	64 mm
Depth on NS 35/7,5	59 mm
Depth on NS 35/15	66.5 mm

Material specifications

Color	gray
Flammability rating according to UL 94	V0
Insulating material group	I
Insulating material	PA
Static insulating material application in cold	-60 °C
Temperature index of insulation material (DIN EN 60216-1 (VDE 0304-21))	130 °C
Relative insulation material temperature index (Elec., UL 746 B)	130 °C
Fire protection for rail vehicles (DIN EN 45545-2) R22	HL 1 - HL 3
Fire protection for rail vehicles (DIN EN 45545-2) R23	HL 1 - HL 3
Fire protection for rail vehicles (DIN EN 45545-2) R24	HL 1 - HL 3
Fire protection for rail vehicles (DIN EN 45545-2) R26	HL 1 - HL 3
Calorimetric heat release NFPA 130 (ASTM E 1354)	28 MJ/kg
Surface flammability NFPA 130 (ASTM E 162)	passed
Specific optical density of smoke NFPA 130 (ASTM E 662)	passed
Smoke gas toxicity NFPA 130 (SMP 800C)	passed

Electrical tests

Surge voltage test

Test voltage setpoint	9.8 kV
Result	Test passed

Temperature-rise test

Requirement temperature-rise test	Increase in temperature \leq 45 K
Result	Test passed
Short-time withstand current 10 mm ²	1.2 kA
Short-time withstand current 16 mm ²	1.92 kA
Result	Test passed

Power-frequency withstand voltage

Test voltage setpoint	2 kV
Result	Test passed

Mechanical properties

Mechanical data

Open side panel	No
-----------------	----

Mechanical tests

UK 10-TWIN - Feed-through terminal block



3005196

<https://www.phoenixcontact.com/sk/products/3005196>

Mechanical strength

Result	Test passed
--------	-------------

Attachment on the carrier

DIN rail/fixing support	NS 32/NS 35
Test force setpoint	5 N
Result	Test passed

Test for conductor damage and slackening

Rotation speed	10 rpm
Revolutions	135
Conductor cross section/weight	0.5 mm ² / 0.3 kg
	10 mm ² / 2 kg
	16 mm ² / 2.9 kg
Result	Test passed

Environmental and real-life conditions

Needle-flame test

Time of exposure	30 s
Result	Test passed

Ambient conditions

Ambient temperature (operation)	-60 °C ... 110 °C (Operating temperature range incl. self-heating; for max. short-term operating temperature, see RTI Elec.)
Ambient temperature (storage/transport)	-25 °C ... 60 °C (for a short time, not exceeding 24 h, -60 °C to +70 °C)
Ambient temperature (assembly)	-5 °C ... 70 °C
Ambient temperature (actuation)	-5 °C ... 70 °C
Permissible humidity (operation)	20 % ... 90 %
Permissible humidity (storage/transport)	30 % ... 70 %

Standards and regulations

Connection in acc. with standard	IEC 60947-7-1
----------------------------------	---------------

Mounting

Mounting type	NS 35/7,5
	NS 35/15
	NS 32

UK 10-TWIN - Feed-through terminal block



3005196

<https://www.phoenixcontact.com/sk/products/3005196>

Drawings

Circuit diagram



UK 10-TWIN - Feed-through terminal block





3005196


<https://www.phoenixcontact.com/sk/products/3005196>


Approvals


To download certificates, visit the product detail page: <https://www.phoenixcontact.com/sk/products/3005196>

 CSA Approval ID: 13631				
	Nominal voltage U_N	Nominal current I_N	Cross section AWG	Cross section mm^2
Use group B	600 V	65 A	24 - 6	-
Use group C	600 V	65 A	24 - 6	-

 IECEE CB Scheme Approval ID: NL-65620				
	Nominal voltage U_N	Nominal current I_N	Cross section AWG	Cross section mm^2
	800 V	57 A	-	- 10

 EAC Approval ID: RU C-DE.BL08.B.00534				
---	--	--	--	--

 KEMA-KEUR Approval ID: 71-119849				
	Nominal voltage U_N	Nominal current I_N	Cross section AWG	Cross section mm^2
	800 V	57 A	-	- 10

 cULus Recognized Approval ID: E60425				
	Nominal voltage U_N	Nominal current I_N	Cross section AWG	Cross section mm^2
Use group B	300 V	65 A	24 - 6	-
Use group C	300 V	65 A	24 - 6	-
Use group F	800 V	65 A	24 - 6	-
Use group D	600 V	5 A	24 - 6	-

UK 10-TWIN - Feed-through terminal block



3005196

<https://www.phoenixcontact.com/sk/products/3005196>

Classifications

ECLASS

ECLASS-11.0	27141120
ECLASS-13.0	27250101

ETIM

ETIM 9.0	EC000897
----------	----------

UNSPSC

UNSPSC 21.0	39121400
-------------	----------

UK 10-TWIN - Feed-through terminal block



3005196

<https://www.phoenixcontact.com/sk/products/3005196>

Environmental product compliance

China RoHS	Environmentally friendly use period: unlimited = EFUP-e
	No hazardous substances above threshold values

UK 10-TWIN - Feed-through terminal block

3005196

<https://www.phoenixcontact.com/sk/products/3005196>

Accessories

 Note: Applying some accessories below might limit this product.

IS-K 10 - Bridge bar isolator

1303337

<https://www.phoenixcontact.com/sk/products/1303337>



Bridge bar isolator, color: gray

ISSBI 10-10 - Bridge

0301521

<https://www.phoenixcontact.com/sk/products/0301521>



Bridge, pitch: 10 mm, number of positions: 10, color: silver

 Max. current carrying capacity: 57 A

UK 10-TWIN - Feed-through terminal block

3005196

<https://www.phoenixcontact.com/sk/products/3005196>



KB- 10 - Chain bridge

0203205

<https://www.phoenixcontact.com/sk/products/0203205>



Chain bridge, pitch: 10 mm, number of positions: 1, color: silver

FBI 2-10 - Fixed bridge

0203483

<https://www.phoenixcontact.com/sk/products/0203483>



Fixed bridge, pitch: 10 mm, number of positions: 2, color: silver

UK 10-TWIN - Feed-through terminal block

3005196

<https://www.phoenixcontact.com/sk/products/3005196>




FBI 10-10 - Fixed bridge

0203276

<https://www.phoenixcontact.com/sk/products/0203276>



Fixed bridge, pitch: 10 mm, number of positions: 10, color: silver

 Max. current carrying capacity: 76 A

EB 2-10 - Insertion bridge

0203153

<https://www.phoenixcontact.com/sk/products/0203153>



Insertion bridge, pitch: 10 mm, number of positions: 2, color: gray

UK 10-TWIN - Feed-through terminal block

3005196

<https://www.phoenixcontact.com/sk/products/3005196>

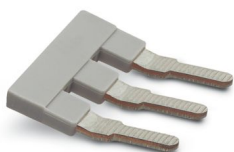


EB 3-10 - Insertion bridge

0203328

<https://www.phoenixcontact.com/sk/products/0203328>

Insertion bridge, pitch: 10 mm, number of positions: 3, color: gray

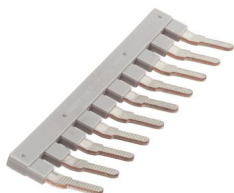


EB 10-10 - Insertion bridge

0203137

<https://www.phoenixcontact.com/sk/products/0203137>

Insertion bridge, pitch: 10 mm, number of positions: 10, color: gray



UK 10-TWIN - Feed-through terminal block

3005196

<https://www.phoenixcontact.com/sk/products/3005196>



SB 2-10/15 - Switching jumper

0203234

<https://www.phoenixcontact.com/sk/products/0203234>

Switching jumper, pitch: 15 mm, number of positions: 2, color: silver



WS 5-10 - Warning label

1004429

<https://www.phoenixcontact.com/sk/products/1004429>

Warning label, Plate, yellow/black, labeled: Lightning flash and warning in English, mounting type: plug in, for terminal block width: 10 mm, diameter: 0 mm



UK 10-TWIN - Feed-through terminal block

3005196

<https://www.phoenixcontact.com/sk/products/3005196>



WS 4-10 - Warning label

1004225

<https://www.phoenixcontact.com/sk/products/1004225>

Warning label, Plate, yellow/black, labeled: Lightning flash and warning in English, mounting type: plug in, for terminal block width: 10 mm, diameter: 0 mm



TS-KK 3 - Separating plate

2770215

<https://www.phoenixcontact.com/sk/products/2770215>

Separating plate, depth: 16 mm, width: 0.5 mm, height: 14 mm, color: gray



UK 10-TWIN - Feed-through terminal block

3005196

<https://www.phoenixcontact.com/sk/products/3005196>



SBS10:UNBEDRUCKT - Marker card

1007248

<https://www.phoenixcontact.com/sk/products/1007248>



Marker card, Card, white, unlabeled, can be labeled with: Marker pen, perforated, mounting type: snapped, snap into flat marker groove, for terminal block width: 10 mm, lettering field size: 6 x 10.1 mm, Number of individual labels: 250

SCP 2-10 - Short-circuit connector

3070412

<https://www.phoenixcontact.com/sk/products/3070412>



Short-circuit connector, pitch: 10.15 mm, number of positions: 2, color: orange

UK 10-TWIN - Feed-through terminal block

3005196

<https://www.phoenixcontact.com/sk/products/3005196>



NS 32 PERF 2000MM-VPE 10 - DIN rail perforated

1201002

<https://www.phoenixcontact.com/sk/products/1201002>



DIN rail perforated, Pack of 10 (20 m), acc. to EN 60715, material: Steel, galvanized, passivated with a thick layer, G profile, color: silver

NS 32 UNPERF 2000MM-VPE 10 - DIN rail, unperforated

1201015

<https://www.phoenixcontact.com/sk/products/1201015>



DIN rail, unperforated, Pack of 10 (20 m), acc. to EN 60715, material: Steel, galvanized, passivated with a thick layer, G profile, color: silver

UK 10-TWIN - Feed-through terminal block

3005196

<https://www.phoenixcontact.com/sk/products/3005196>

NS 35/ 7,5 PERF 2000MM - DIN rail perforated

0801733

<https://www.phoenixcontact.com/sk/products/0801733>



DIN rail perforated, Pack of 25 (50 m), acc. to EN 60715, material: Steel, galvanized, passivated with a thick layer, Standard profile, color: silver

NS 35/ 7,5 UNPERF 2000MM - DIN rail, unperforated

0801681

<https://www.phoenixcontact.com/sk/products/0801681>



DIN rail, unperforated, Pack of 25 (50 m), acc. to EN 60715, material: Steel, galvanized, passivated with a thick layer, Standard profile, color: silver

UK 10-TWIN - Feed-through terminal block

3005196

<https://www.phoenixcontact.com/sk/products/3005196>



NS 35/ 7,5 WH PERF 2000MM - DIN rail perforated

1204119

<https://www.phoenixcontact.com/sk/products/1204119>



DIN rail perforated, Pack of 25 (50 m), acc. to EN 60715, material: Steel, Galvanized, white passivated, Standard profile, color: silver

NS 35/ 7,5 WH UNPERF 2000MM-VPE 10 - DIN rail, unperforated

1204122

<https://www.phoenixcontact.com/sk/products/1204122>



DIN rail, unperforated, Pack of 10 (20 m), acc. to EN 60715, material: Steel, Galvanized, white passivated, Standard profile, color: silver

UK 10-TWIN - Feed-through terminal block

3005196

<https://www.phoenixcontact.com/sk/products/3005196>



NS 35/ 7,5 AL UNPERF 2000MM - DIN rail, unperforated

0801704

<https://www.phoenixcontact.com/sk/products/0801704>



DIN rail, unperforated, Pack of 25 (50 m), acc. to EN 60715, material: Aluminum, uncoated, Standard profile, color: silver

NS 35/ 7,5 ZN PERF 2000MM - DIN rail perforated

1206421

<https://www.phoenixcontact.com/sk/products/1206421>



DIN rail perforated, Pack of 25 (50 m), acc. to EN 60715, material: Steel, galvanized, Standard profile, color: silver

UK 10-TWIN - Feed-through terminal block

3005196

<https://www.phoenixcontact.com/sk/products/3005196>



NS 35/ 7,5 ZN UNPERF 2000MM - DIN rail, unperforated

1206434

<https://www.phoenixcontact.com/sk/products/1206434>



DIN rail, unperforated, Pack of 25 (50 m), acc. to EN 60715, material: Steel, galvanized, Standard profile, color: silver

NS 35/ 7,5 CU UNPERF 2000MM-VPE 10 - DIN rail, unperforated

0801762

<https://www.phoenixcontact.com/sk/products/0801762>



DIN rail, unperforated, Pack of 10 (20 m), acc. to EN 60715, material: Copper, uncoated, Standard profile, color: copper-colored

UK 10-TWIN - Feed-through terminal block

3005196

<https://www.phoenixcontact.com/sk/products/3005196>



NS 35/ 7,5 CAP - End cap

1206560

<https://www.phoenixcontact.com/sk/products/1206560>

DIN rail end piece, for DIN rail NS 35/7.5



NS 35/15 PERF 2000MM - DIN rail perforated

1201730

<https://www.phoenixcontact.com/sk/products/1201730>



DIN rail perforated, Pack of 25 (50 m), similar to EN 60715, material: Steel, galvanized, passivated with a thick layer, Standard profile, color: silver

UK 10-TWIN - Feed-through terminal block

3005196

<https://www.phoenixcontact.com/sk/products/3005196>



NS 35/15 UNPERF 2000MM - DIN rail, unperforated

1201714

<https://www.phoenixcontact.com/sk/products/1201714>



DIN rail, unperforated, Pack of 25 (50 m), similar to EN 60715, material: Steel, galvanized, passivated with a thick layer, Standard profile, color: silver

NS 35/15 WH PERF 2000MM - DIN rail perforated

0806602

<https://www.phoenixcontact.com/sk/products/0806602>



DIN rail perforated, Pack of 25 (50 m), similar to EN 60715, material: Steel, Galvanized, white passivated, Standard profile, color: white

UK 10-TWIN - Feed-through terminal block

3005196

<https://www.phoenixcontact.com/sk/products/3005196>



NS 35/15 WH UNPERF 2000MM-VPE 10 - DIN rail, unperforated

1204135

<https://www.phoenixcontact.com/sk/products/1204135>



DIN rail, unperforated, Pack of 10 (20 m), similar to EN 60715, material: Steel, Galvanized, white passivated, Standard profile, color: silver

NS 35/15 AL UNPERF 2000MM - DIN rail, unperforated

1201756

<https://www.phoenixcontact.com/sk/products/1201756>



DIN rail, unperforated, similar to EN 60715, material: Aluminum, uncoated, Standard profile, color: silver

UK 10-TWIN - Feed-through terminal block

3005196

<https://www.phoenixcontact.com/sk/products/3005196>



NS 35/15 ZN PERF 2000MM - DIN rail perforated

1206599

<https://www.phoenixcontact.com/sk/products/1206599>



DIN rail perforated, Pack of 25 (50 m), similar to EN 60715, material: Steel, galvanized, Standard profile, color: silver

NS 35/15 ZN UNPERF 2000MM - DIN rail, unperforated

1206586

<https://www.phoenixcontact.com/sk/products/1206586>



DIN rail, unperforated, Pack of 25 (50 m), similar to EN 60715, material: Steel, galvanized, Standard profile, color: silver

UK 10-TWIN - Feed-through terminal block

3005196

<https://www.phoenixcontact.com/sk/products/3005196>



NS 35/15 CU UNPERF 2000MM-VPE 10 - DIN rail, unperforated

1201895

<https://www.phoenixcontact.com/sk/products/1201895>



DIN rail, unperforated, Pack of 10 (20 m), similar to EN 60715, material: Copper, uncoated, Standard profile, color: copper-colored

NS 35/15 CAP - End cap

1206573

<https://www.phoenixcontact.com/sk/products/1206573>

DIN rail end piece, for DIN rail NS 35/15



UK 10-TWIN - Feed-through terminal block

3005196

<https://www.phoenixcontact.com/sk/products/3005196>



NS 35/15-2,3 UNPERF 2000MM-VPE 10 - DIN rail, unperforated

1201798

<https://www.phoenixcontact.com/sk/products/1201798>



DIN rail, unperforated, Pack of 10 (20 m), acc. to EN 60715, material: Steel, galvanized, passivated with a thick layer, Standard profile 2.3 mm, color: silver

ZB 10:UNBEDRUCKT - Zack marker strip

1053001

<https://www.phoenixcontact.com/sk/products/1053001>



Zack marker strip, Strip, white, unlabeled, can be labeled with: PLOTMARK, CMS-P1-PLOTTER, mounting type: snapped, for terminal block width: 10.2 mm, lettering field size: 10.5 x 10.15 mm, Number of individual labels: 10

UK 10-TWIN - Feed-through terminal block



3005196

<https://www.phoenixcontact.com/sk/products/3005196>

ZB 10 CUS - Zack marker strip

0824941

<https://www.phoenixcontact.com/sk/products/0824941>



Zack marker strip, can be ordered: Strip, white, labeled according to customer specifications, mounting type: snap into tall marker groove, for terminal block width: 10.2 mm, lettering field size: 10,15 x 10,5 mm, Number of individual labels: 10

ZB10,LGS:FORTL.ZAHLEN - Zack marker strip

1053014

<https://www.phoenixcontact.com/sk/products/1053014>



Zack marker strip, Strip, white, labeled, can be labeled with: CMS-P1-PLOTTER, printed horizontally: consecutive numbers 1 ... 10, 11 ... 20, etc. up to 91 ... 100, mounting type: snapped, for terminal block width: 10.2 mm, lettering field size: 10,15 x 10,5 mm, Number of individual labels: 10

UK 10-TWIN - Feed-through terminal block

3005196

<https://www.phoenixcontact.com/sk/products/3005196>

ZB10,QR:FORTL.ZAHLEN - Zack marker strip

1053027

<https://www.phoenixcontact.com/sk/products/1053027>



Zack marker strip, Strip, white, labeled, can be labeled with: CMS-P1-PLOTTER, Printed vertically: consecutive numbers 1 ... 10, 11 ... 20, etc. up to 91 ... 100, mounting type: snapped, for terminal block width: 10.2 mm, lettering field size: 10,15 x 10,5 mm, Number of individual labels: 10

ZB10,LGS:L1-N,PE - Marker for terminal blocks

1053412

<https://www.phoenixcontact.com/sk/products/1053412>



Marker for terminal blocks, Strip, white, labeled, can be labeled with: CMS-P1-PLOTTER, horizontal: L1, L2, L3, N, PE, L1, L2, L3, N, PE, mounting type: snapped, for terminal block width: 10.2 mm, lettering field size: 10,15 x 10,5 mm, Number of individual labels: 10

UK 10-TWIN - Feed-through terminal block

3005196

<https://www.phoenixcontact.com/sk/products/3005196>



ZB10,LGS:U-N - Marker for terminal blocks

1053438

<https://www.phoenixcontact.com/sk/products/1053438>



Marker for terminal blocks, Strip, white, labeled, can be labeled with: CMS-P1-PLOTTER, horizontal: U, V, W, N, GND, U, V, W, N, GND, mounting type: snapped, for terminal block width: 10.2 mm, lettering field size: 10,15 x 10,5 mm, Number of individual labels: 10

UC-TM 10 - Marker for terminal blocks

0818069

<https://www.phoenixcontact.com/sk/products/0818069>



Marker for terminal blocks, Sheet, white, unlabeled, can be labeled with: BLUEMARK ID COLOR, BLUEMARK ID, BLUEMARK CLED, PLOTMARK, CMS-P1-PLOTTER, mounting type: snapped, for terminal block width: 10.2 mm, lettering field size: 9.6 x 10.5 mm, Number of individual labels: 48

UK 10-TWIN - Feed-through terminal block

3005196

<https://www.phoenixcontact.com/sk/products/3005196>



UC-TM 10 CUS - Marker for terminal blocks

0824605

<https://www.phoenixcontact.com/sk/products/0824605>



Marker for terminal blocks, can be ordered: by sheet, white, labeled according to customer specifications, mounting type: snap into tall marker groove, for terminal block width: 10.2 mm, lettering field size: 9.6 x 10.5 mm, Number of individual labels: 48

UCT-TM 10 - Marker for terminal blocks

0829142

<https://www.phoenixcontact.com/sk/products/0829142>



Marker for terminal blocks, Sheet, white, unlabeled, can be labeled with: TOPMARK NEO, TOPMARK LASER, BLUEMARK ID COLOR, BLUEMARK ID, BLUEMARK CLED, THERMOMARK PRIME, THERMOMARK CARD 2.0, THERMOMARK CARD, mounting type: snapped, for terminal block width: 10.2 mm, lettering field size: 8.9 x 9.6 mm, Number of individual labels: 36

UK 10-TWIN - Feed-through terminal block

3005196

<https://www.phoenixcontact.com/sk/products/3005196>



UCT-TM 10 CUS - Marker for terminal blocks

0829623

<https://www.phoenixcontact.com/sk/products/0829623>



Marker for terminal blocks, can be ordered: by sheet, white, labeled according to customer specifications, mounting type: snap into tall marker groove, for terminal block width: 10.2 mm, lettering field size: 8.9 x 9.6 mm, Number of individual labels: 36

CLIPFIX 35 - End bracket

3022218

<https://www.phoenixcontact.com/sk/products/3022218>



Quick mounting end clamp for NS 35/7,5 DIN rail or NS 35/15 DIN rail, with marking option, width: 9.5 mm, color: gray

UK 10-TWIN - Feed-through terminal block

3005196

<https://www.phoenixcontact.com/sk/products/3005196>



CLIPFIX 35-5 - End bracket

3022276

<https://www.phoenixcontact.com/sk/products/3022276>

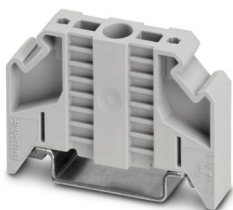


Quick mounting end clamp for NS 35/7,5 DIN rail or NS 35/15 DIN rail, with marking option, with parking option for FBS...5, FBS...6, KSS 5, KSS 6, width: 5.15 mm, color: gray

E/NS 35 N - End bracket

0800886

<https://www.phoenixcontact.com/sk/products/0800886>



End clamp, width: 9.5 mm, color: gray

UK 10-TWIN - Feed-through terminal block

3005196

<https://www.phoenixcontact.com/sk/products/3005196>

PSBJ 4/15/6 FARBLOS - Test plug strip

0303419

<https://www.phoenixcontact.com/sk/products/0303419>



Test plug strip, number of positions: 1, color: transparent

PSBJ 4/15/6 WH - Test plug strip

0303312

<https://www.phoenixcontact.com/sk/products/0303312>



Test plug strip, number of positions: 1, color: white

UK 10-TWIN - Feed-through terminal block

3005196

<https://www.phoenixcontact.com/sk/products/3005196>



PSBJ 4/15/6 RD - Test plug strip

0303325

<https://www.phoenixcontact.com/sk/products/0303325>



Test plug strip, number of positions: 1, color: red

PSBJ 4/15/6 BU - Test plug strip

0303354

<https://www.phoenixcontact.com/sk/products/0303354>



Test plug strip, number of positions: 1, color: blue

UK 10-TWIN - Feed-through terminal block

3005196

<https://www.phoenixcontact.com/sk/products/3005196>

PSBJ 4/15/6 YE - Test plug strip

0303367

<https://www.phoenixcontact.com/sk/products/0303367>



Test plug strip, number of positions: 1, color: yellow

PSBJ 4/15/6 GN - Test plug strip

0303370

<https://www.phoenixcontact.com/sk/products/0303370>



Test plug strip, number of positions: 1, color: green

UK 10-TWIN - Feed-through terminal block

3005196

<https://www.phoenixcontact.com/sk/products/3005196>



PSBJ 4/15/6 VT - Test plug strip

0303383

<https://www.phoenixcontact.com/sk/products/0303383>



Test plug strip, number of positions: 1, color: violet

PSBJ 4/15/6 GY - Test plug strip

0303396

<https://www.phoenixcontact.com/sk/products/0303396>



Test plug strip, number of positions: 1, color: gray

UK 10-TWIN - Feed-through terminal block

3005196

<https://www.phoenixcontact.com/sk/products/3005196>



PSBJ 4/15/6 BK - Test plug strip

0303406

<https://www.phoenixcontact.com/sk/products/0303406>



Test plug strip, number of positions: 1, color: black

PSB 4/7/6 - Test plug strip

0303299

<https://www.phoenixcontact.com/sk/products/0303299>



Test plug strip, number of positions: 1, color: silver

UK 10-TWIN - Feed-through terminal block

3005196

<https://www.phoenixcontact.com/sk/products/3005196>

E/UK - End bracket

1201442

<https://www.phoenixcontact.com/sk/products/1201442>

End bracket, Mounting on a DIN rail NS 32 or NS 35, material: PA, color: gray



E/UK 1 - End bracket

1201413

<https://www.phoenixcontact.com/sk/products/1201413>

End clamps, for supporting the ends of double-level and three-level terminal blocks, width: 10 mm, color: gray



UK 10-TWIN - Feed-through terminal block

3005196

<https://www.phoenixcontact.com/sk/products/3005196>



SZS 1,0X4,0 VDE - Screwdriver

1205066

<https://www.phoenixcontact.com/sk/products/1205066>



Screwdriver, slot-headed, VDE insulated, size: 1.0 x 4.0 x 100 mm, 2-component grip, with non-slip grip

Phoenix Contact 2024 © - all rights reserved

<https://www.phoenixcontact.com>

PHOENIX CONTACT s.r.o.

Námestie Mateja Korvína 1

811 07 Bratislava

+421 2 3210 1470

obchod.sk@phoenixcontact.com