

DATASHEET

Type	Multiband antenna
Frequencies	AMPS (824-894 MHz) ISM (868 MHz) GSM (900 MHz) DCS (1800 MHz) PCS (1900 MHz) 3G (UMTS 2.1 GHz) WIFI / BLUETOOTH (2.4 GHz)
Mounting	Magnetic Mount
Part No.	2J310M
Revision	00



1. SPECIFICATION

1.1. Electrical Specifications

Frequencies	AMPS (824-894 MHz) ISM (868 MHz) GSM (900 MHz) DCS (1800 MHz) PCS (1900 MHz) 3G (UMTS 2.1 GHz) WIFI / BLUETOOTH (2.4 GHz)
Impedance	50 Ohms
Polarization	VERTICAL
Gain	5dBi at 2.4GHz
Power handling	30W
Operating temperature	-40°C to +85°C

1.2. Connection Specifications

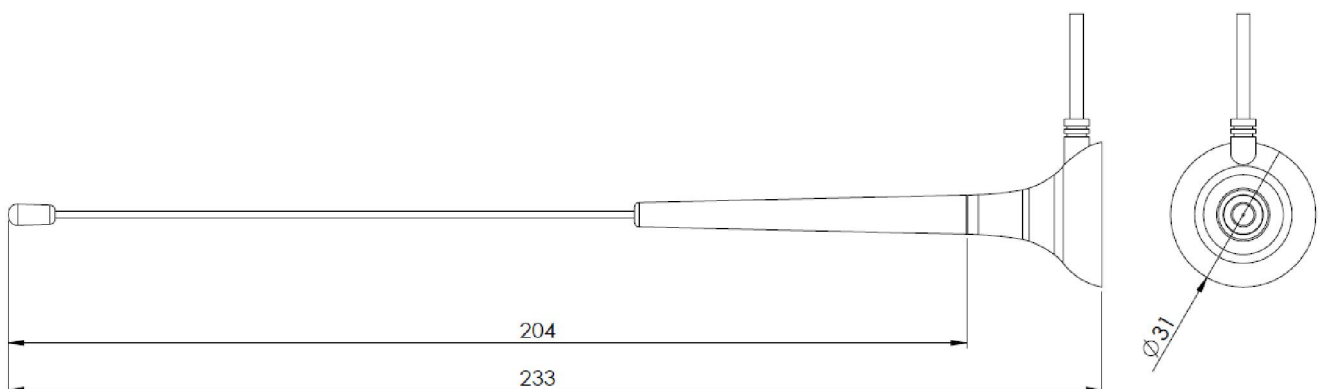
Connector type: RPSMA male
Cable: RG174U
Cable length: 80 cm

For different cable length and connector type ask our sales team.

1.3. Mechanical Specifications and Dimensions

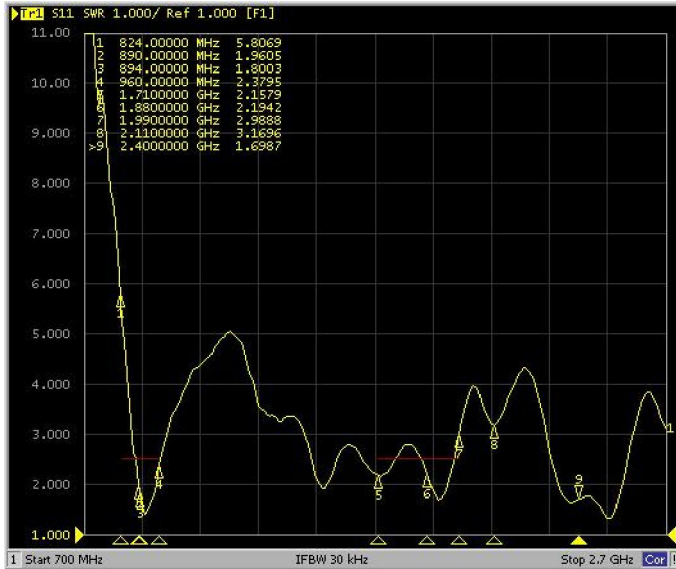
1.3.1. Magnetic Mount

Material: ABS
Max. dimensions: 31mm x 233mm (D x H)
Weight: 65g 'weight with connection above'
Colour: Black (for different colours please ask our sales team)



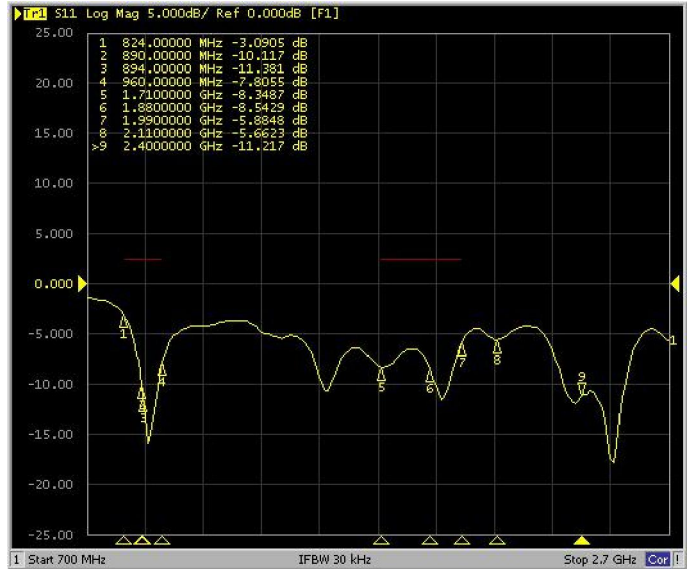
2. MEASUREMENT

VSWR(Quad Band)



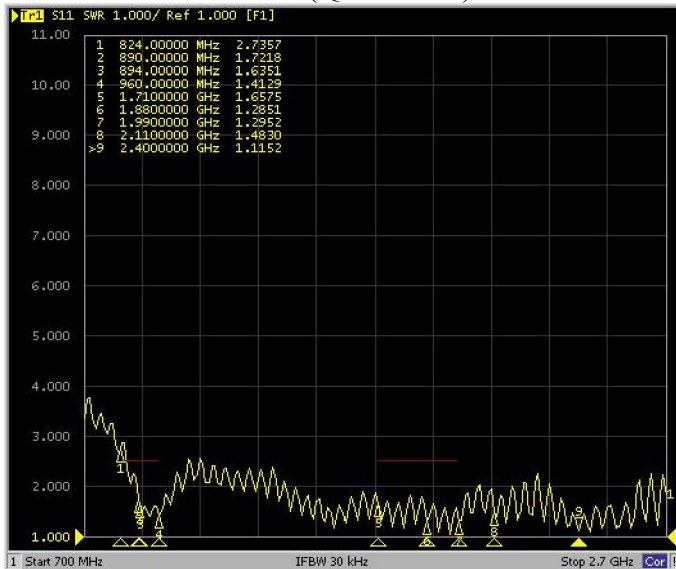
Tested with 30cm cable length - RG174 with SMA male

Log Mag(Quad Band)



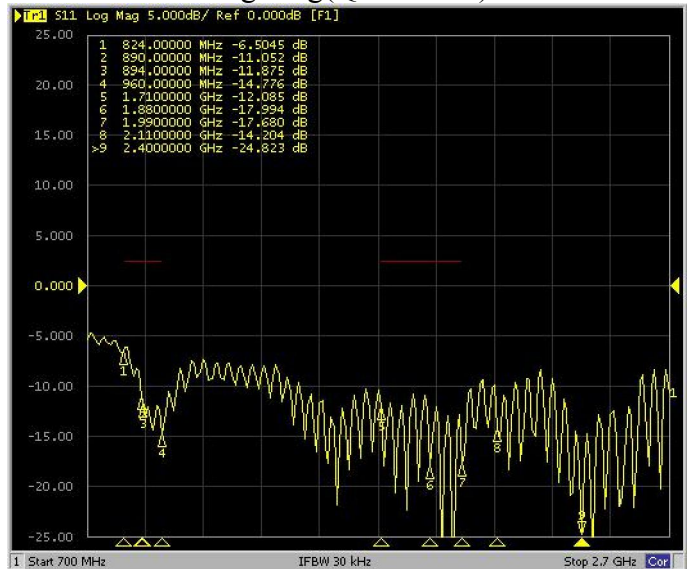
Tested with 30cm cable length - RG174 with SMA male

VSWR(Quad Band)



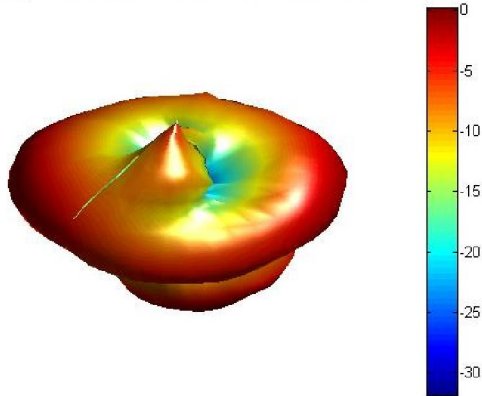
Tested with 2.5m cable length - RG174 with SMA male

Log Mag(Quad Band)



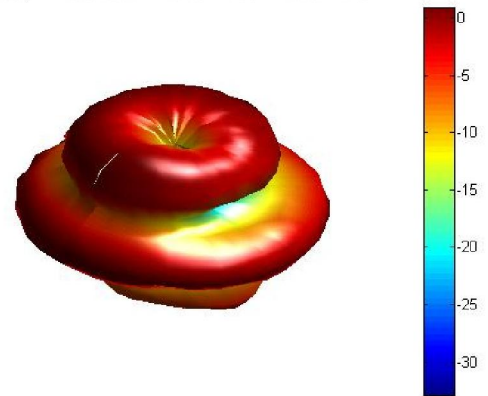
Tested with 2.5m cable length - RG174 with SMA male

3D radiation pattern at 900MHz.jpg
Freq = 0.9GHz Az= 45 EL= 45



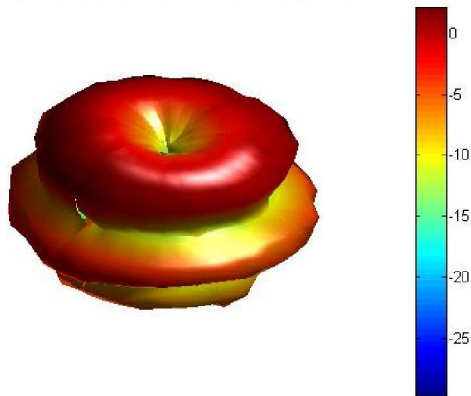
Tested with 30cm cable length.

3D radiation pattern at 1.8GHz.jpg
Freq = 1.8GHz Az= 45 EL= 45



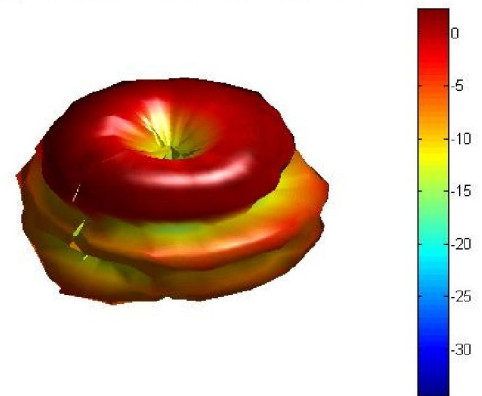
Tested with 30cm cable length.

3D radiation pattern at 1.9GHz.jpg
Freq = 1.9GHz Az= 45 EL= 45



Tested with 30cm cable length.

3D radiation pattern at 2.4GHz.jpg
Freq = 2.4GHz Az= 45 EL= 45



Tested with 30cm cable length.

3. IMAGES

