

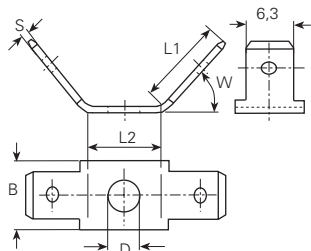
Flachstecker schraubbar und schweisbar 6,3 mm

Languettes vissable et soudable

Tabs screwable and weldable

Werkstoff/Matière/Material
 .6 = Messing/laiton/brass
 .8 = rostfreier Stahl/acier inox/stainless steel
 .9 = Stahl/acier/steel

■ = Oberflächen/Surface/Surface-plating
 Seite/page/page 5.011

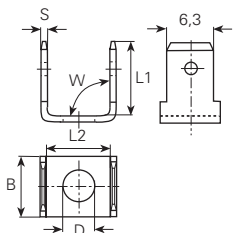


*** = ohne Bohrung / * = sans trou / * = without hole**

øD mm	B mm	L1 mm	L2 mm	W mm	S mm	Artikelnummer Numéro d'article Part-No.
*	8	10	10.5	45°	0.8	3870a.80
3.2	8	10	10.5	45°	0.8	3871a.6■
3.7	8	10	10.5	45°	0.8	3873a.6■
4.2	8	8	11	45°	0.8	38750a.6■
	10	10	12	45°	0.8	3875a.6■
	10	10	12	45°	0.8	3875a.9■
5.2	10	10	12	45°	0.8	3878a.6■
6.2	10	10	12	45°	0.8	3879a.6■

Werkstoff/Matière/Material
 .2 = Bronze/bronze
 .4 = Kupfer/cuivre/copper
 .6 = Messing/laiton/brass
 .8 = rostfreier Stahl/acier inox/stainless steel
 .9 = Stahl/acier/steel

■ = Oberflächen/Surface/Surface-plating
 Seite/page/page 5.011



*** = ohne Bohrung / * = sans trou / * = without hole**

øD mm	B mm	L1 mm	L2 mm	W mm	S mm	Artikelnummer Numéro d'article Part-No.
*	8	9.7	10.5	90°	0.8	3870c.80
	8	9.7	10.5	90°	0.8	3870c.9■
2.7	8.8	10	7	90°	0.8	38712c.6■
	8.8	10	7	90°	0.8	38732.4■
3.1	8.8	10	7	90°	0.8	38711c.2■
3.2	8	9.7	10.5	90°	0.8	3871c.6■
	8	9.6	9.8	90°	0.8	3876q02.6■
3.7	8.8	10	7	90°	0.8	38731.2■
	8.8	10	7	90°	0.8	38733.6■
	8	9.7	10.5	90°	0.8	3873c.6■
	8	9.7	10.5	90°	0.8	3873c.9■
4.2	8	10.7	11	90°	0.8	3876c.6■
4.5	9.2	14.2	7.5	90°	0.8	38760c.6■
5.3	8	9.6	9.8	90°	0.8	3876s02.6■
6.3	8	9.6	9.8	90°	0.8	3876t02.6■
	10	10	12	90°	0.8	3879c.6■
7	10	10	12	90°	0.8	3879d.4■
	10	10	12	90°	0.8	3879d.9■