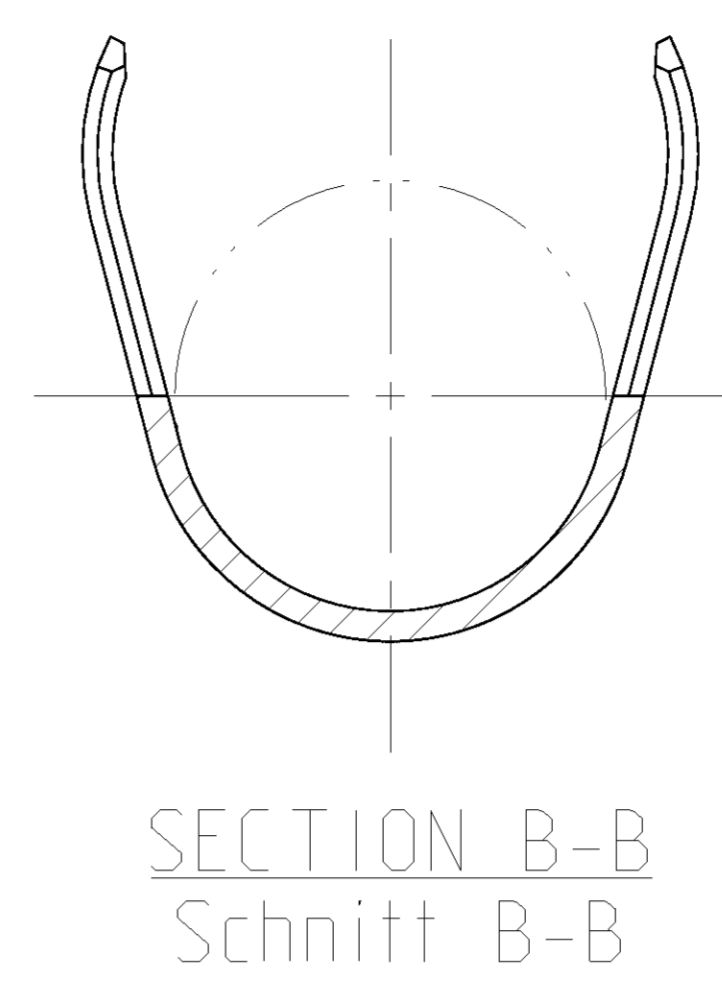
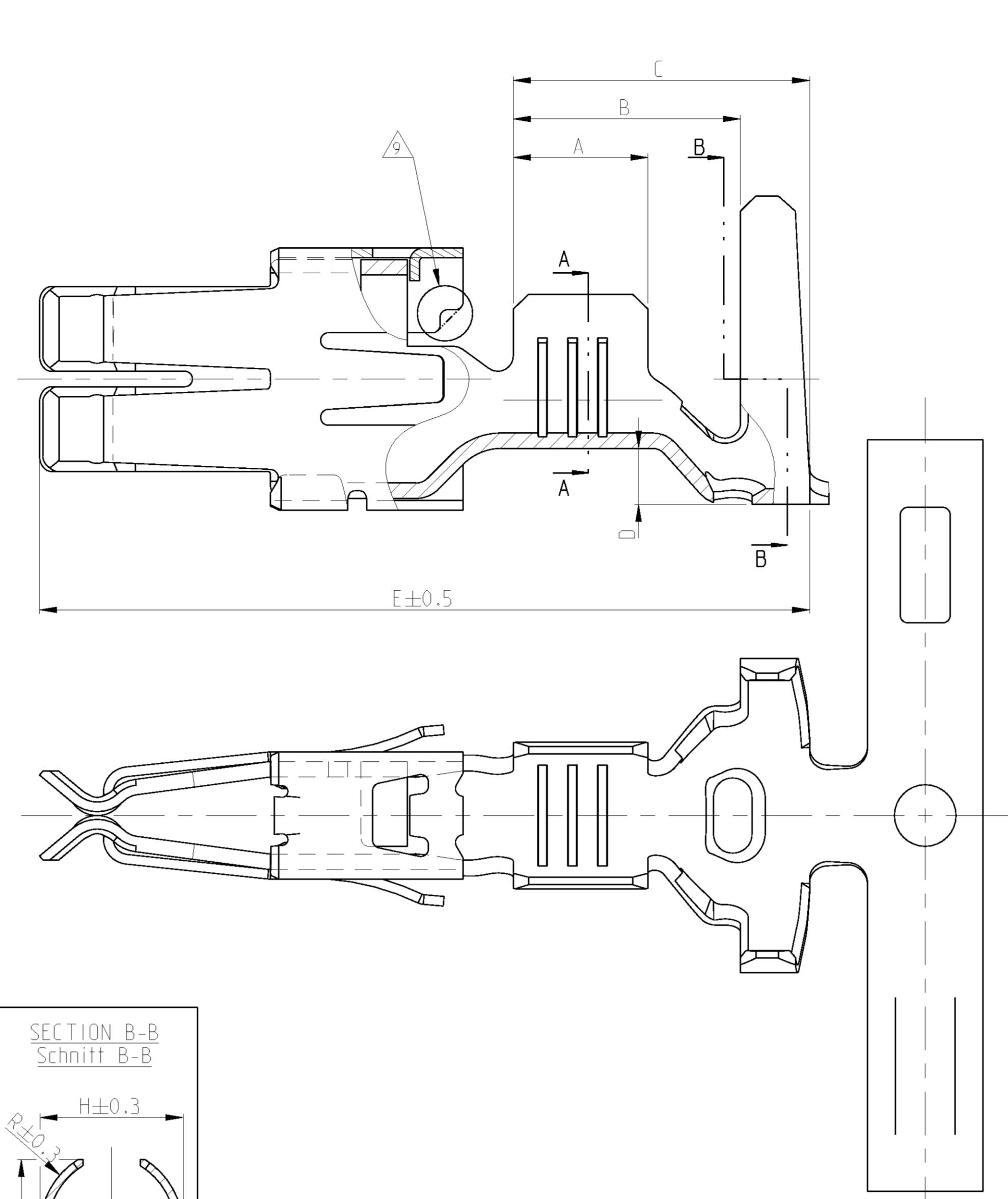
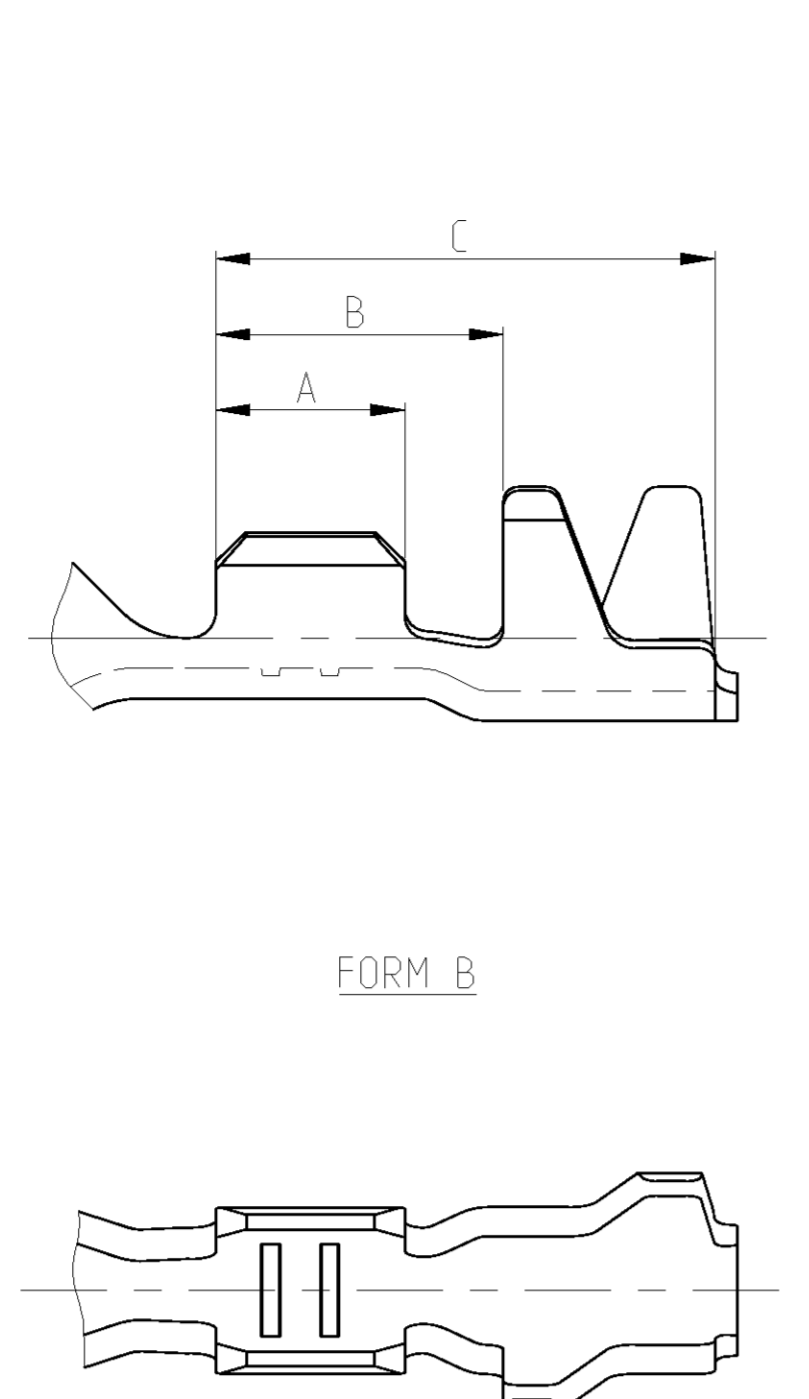
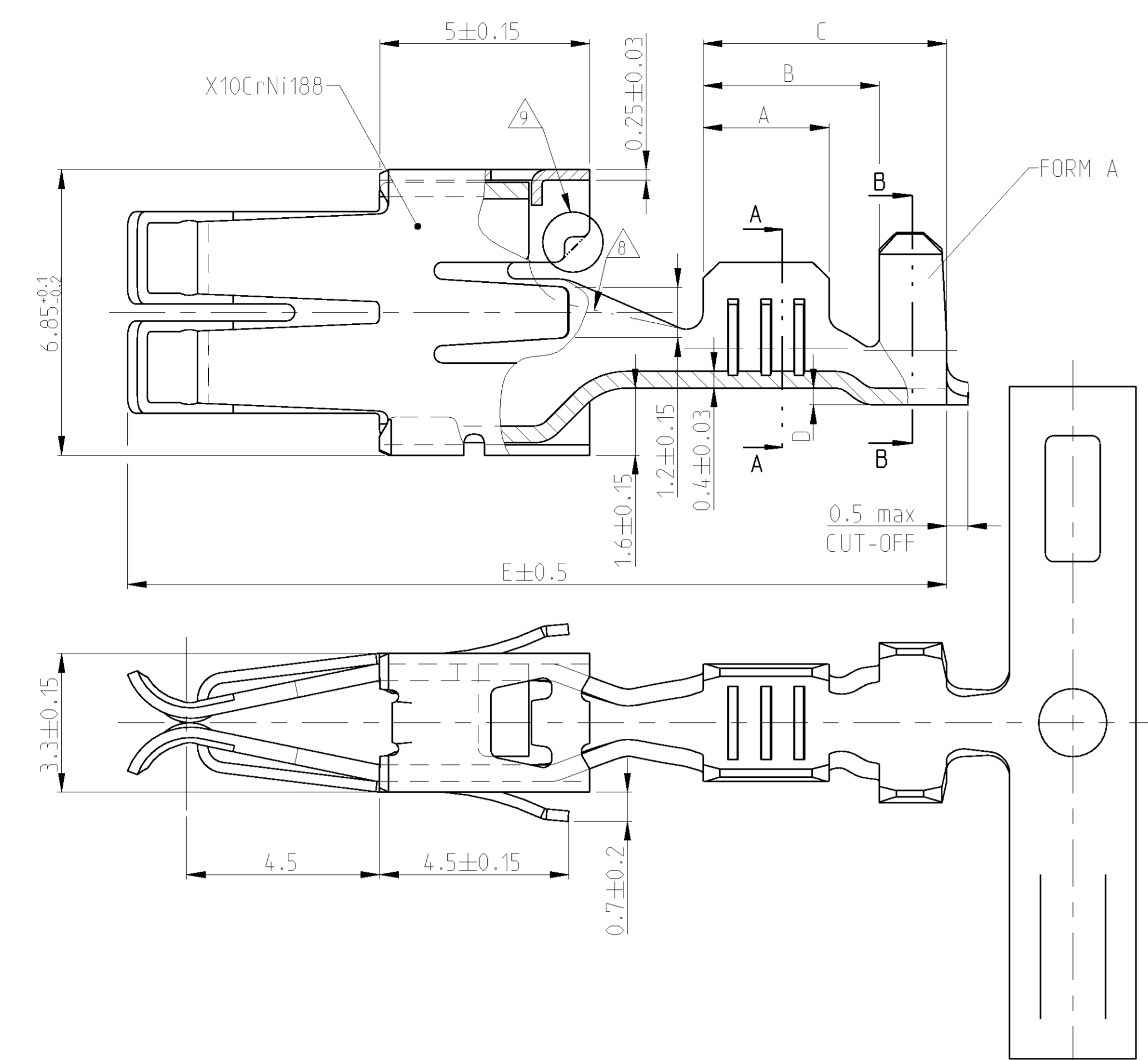


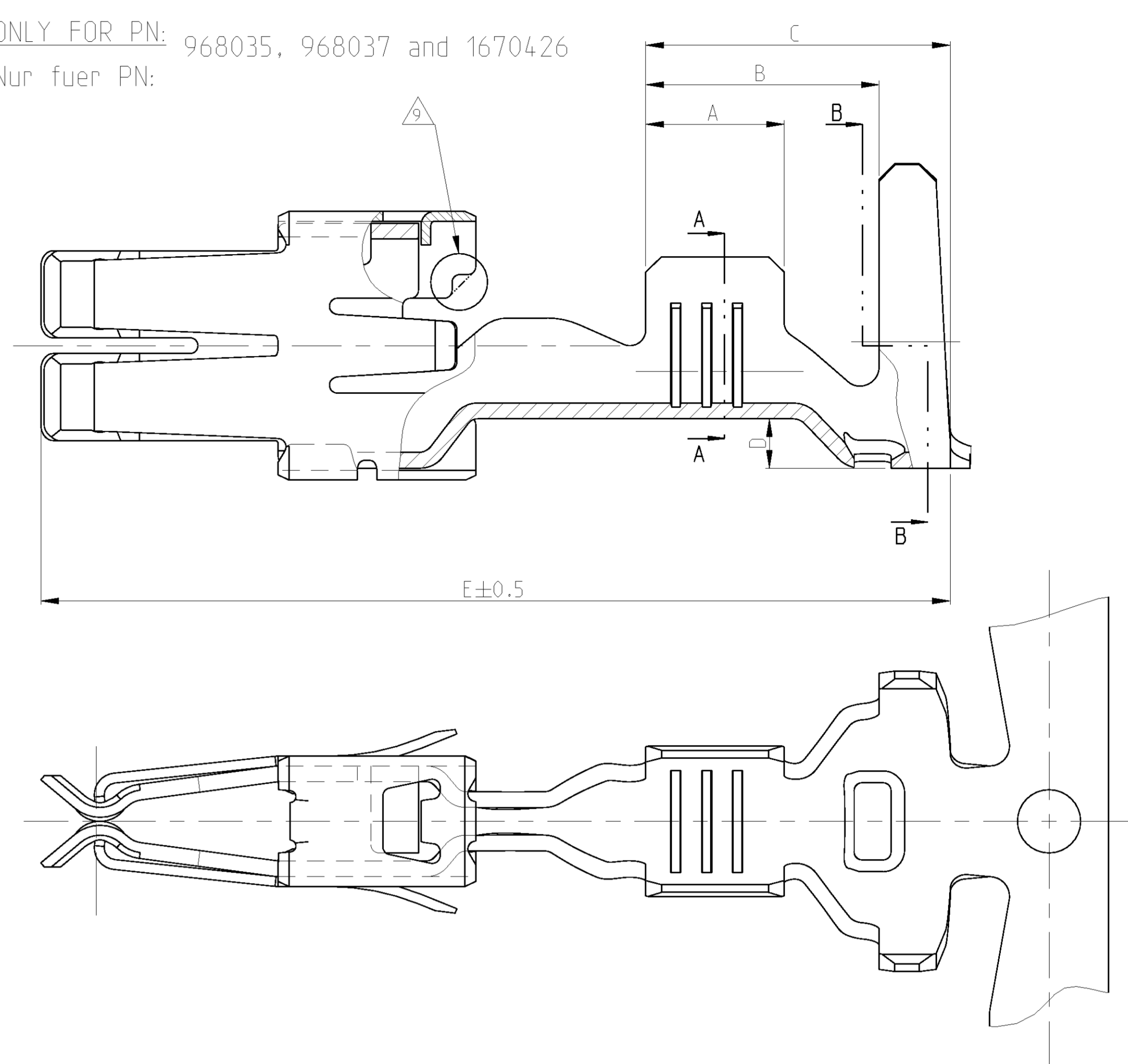
CONTACTS FOR FLR AND FLK-CABLE  
Kontakte fuer FLR und FLK-Leitung

CONTACTS FOR SINGLE WIRE SEALING SYSTEM: FLR- AND FLK-CABLE  
Kontakte fuer Einzel - Dichtung - System: FLR- UND FLK-Leitung

REV	DESCRIPTION	DATE	BY	APPV
A13	REVISED PER EC 0-11-005750	29MAR2011	R.S.	J.S.
B	ECR-11-005028	15JAN2011	R.S.	J.S.
B1	SEE ECR 12-013359	25JAN2012	J.S.	R.S.



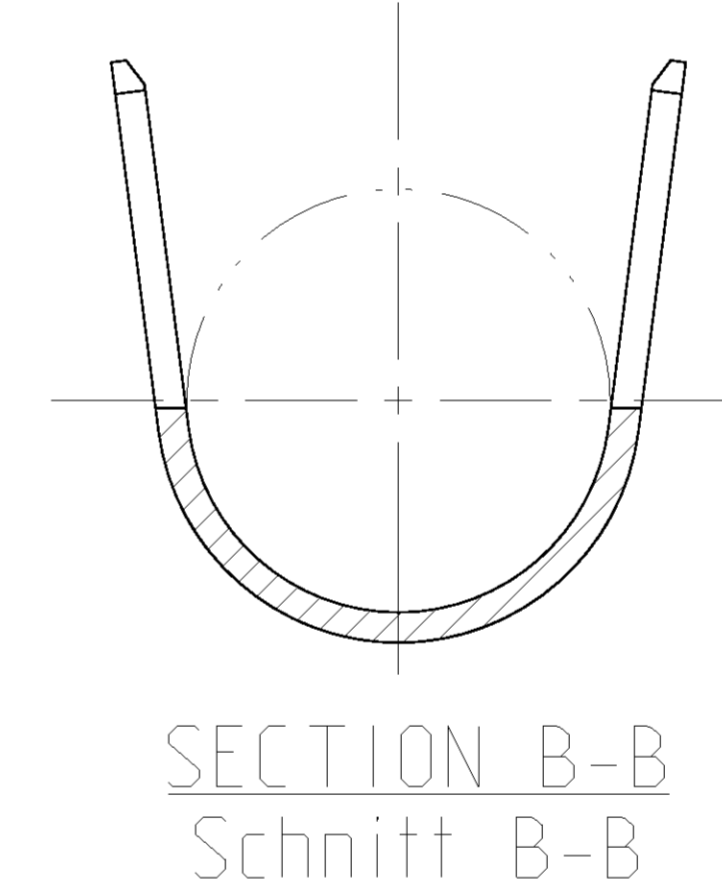
ONLY FOR PN: 968035, 968037 and 1670426  
Nur fuer PN:



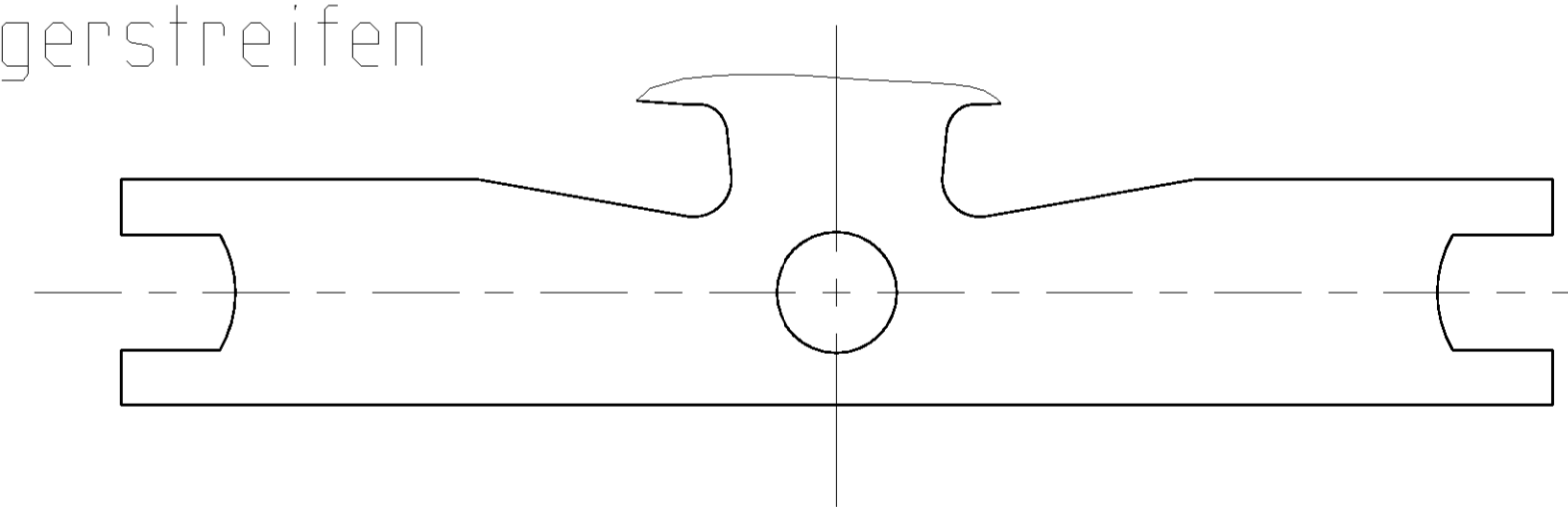
SECTION A-A Schnitt A-A	SECTION B-B Schnitt B-B	WIRE CRIMP Drahtcrimp	SECTION A-A Schnitt A-A	SECTION B-B Schnitt B-B

DIMENSIONS SEE FIGURE CONTACTS FOR FLR - CABLE  
Masse siehe Darstellung der Kontakte fuer FLR- Leitung

ONLY FOR PN: 964330, 964332, 964334, 968035 and 968037  
Nur fuer PN:



CARRIERSTRIP  
Traegerstreifen



ORDER-NO. Bestell-Nr	ORDER-NO. Rev	WIRE RANGE Drahtgrößen Bereich (mm²)	INSULATION Ø Isolations (mm)	MATERIAL Werkstoff	SURFACE Oberflaeche	LENGTH Laenge	WIRE CRIMP Drahtcrimp	INSULATION CRIMP Isolationscrimp	CRIMP HEIGHT (CH) Crimp-hoeh	WIRE CRIMP Drahtcrimp	INSULATION CRIMP Isolationscrimp	ORDER-NO. Bestell-Nr	CRIMP DATA AND CRIMP TOOL Crimpdaten u. Crimpwerkzeuge	ORDER-NO. Bestell-Nr	EXTRACTION TOOL Ausdrueckwerkzeug	CRIMP DATA AND CRIMP TOOL Crimpdaten u. Crimpwerkzeuge
1-968037-4	B	2-968038-4	3.6 - 5.1	CuNiSi		A = 4.30 B = 6.50 C = 8.30 D = 1.45 E = 20.0	E = 5.30 G = 5.60 D <sub>gr</sub> = 2.90	H = 8.15 K = 8.00 D <sub>iso</sub> = 6.00	5.00mm² = 2.36 6.00mm² = 2.55 PRELIMINARY vorlaeufig	E = 5.30 G = 5.60 D <sub>gr</sub> = 2.90	H = 7.00 K = 6.90 D <sub>iso</sub> = 4.10	1694009-1	539616-1	539635-1	539666-2	539666-2
1-968037-4	B	1-968038-4	2.5 - 4.0	CuFe2	sel.Gold	A = 4.00 B = 5.90 C = 7.70 D = 1.25 E = 23.0	E = 4.60 G = 4.80 D <sub>gr</sub> = 2.40	H = 7.60 K = 7.70 D <sub>iso</sub> = 5.60	4.00mm² = 2.35 3.00mm² = 2.13	E = 3.60 G = 4.95 D <sub>gr</sub> = 1.70	H = 7.00 K = 6.90 D <sub>iso</sub> = 4.10	1694009-1	539616-1	539635-1	539666-2	539666-2
0-968037-2	B	0-968038-2	2.7 - 3.7	CuSn4	vorverzinkt	A = 3.50 B = 5.90 C = 7.70 D = 1.25 E = 23.0	E = 3.80 G = 4.10 D <sub>gr</sub> = 1.60	H = 7.60 K = 7.70 D <sub>iso</sub> = 5.60	1.50mm² = 1.76 2.00mm² = 1.90 2.50mm² = 2.04	E = 3.10 G = 4.20 D <sub>gr</sub> = 2.4	H = 7.00 K = 6.90 D <sub>iso</sub> = 4.10	1694009-1	539616-1	539635-1	539666-2	539666-2
2-968035-4	B	2-968036-4	2.7 - 3.7	CuSn4	vorverzinkt	A = 4.00 B = 5.90 C = 7.70 D = 1.25 E = 20.0	E = 4.60 G = 4.80 D <sub>gr</sub> = 2.40	H = 7.80 K = 7.80 D <sub>iso</sub> = 5.70	3.00mm² = 2.13 4.00mm² = 2.35	E = 3.60 G = 4.93 D <sub>gr</sub> = 2.30	H = 7.50 K = 6.80 D <sub>iso</sub> = 4.60	1694009-1	539616-1	539635-1	539666-2	539666-2
1-964334-5	B	1-964333-5	2.5 - 4.0	CuFe2	vorverzinkt	A = 4.00 B = 5.90 C = 7.70 D = 1.25 E = 20.0	E = 4.60 G = 4.80 D <sub>gr</sub> = 2.40	H = 7.80 K = 7.80 D <sub>iso</sub> = 5.70	3.00mm² = 2.13 4.00mm² = 2.35	E = 3.60 G = 4.93 D <sub>gr</sub> = 2.30	H = 7.50 K = 6.80 D <sub>iso</sub> = 4.60	1694009-1	539616-1	539635-1	539666-2	539666-2
1-964332-5	B	1-964331-5	2.2 - 3.7	CuFe2	sel.Gold	A = 3.50 B = 5.90 C = 7.70 D = 1.25 E = 20.0	E = 3.80 G = 4.00 D <sub>gr</sub> = 1.70	H = 7.80 K = 7.80 D <sub>iso</sub> = 5.70	1.50mm² = 1.76 2.00mm² = 1.90 2.50mm² = 2.04	E = 3.10 G = 4.20 D <sub>gr</sub> = 1.70	H = 7.50 K = 6.80 D <sub>iso</sub> = 4.60	1694009-1	539616-1	539635-1	539666-2	539666-2
1-964332-2	B	964331-2	2.2 - 3.7	CuFe2	vorverzinkt	A = 3.00 B = 5.40 C = 7.20 D = 1.25 E = 20.0	E = 2.80 G = 3.00 D <sub>gr</sub> = 1.10	H = 7.70 K = 7.70 D <sub>iso</sub> = 5.50	0.50mm² = 1.43 0.75mm² = 1.52 1.00mm² = 1.61	E = 2.20 G = 3.10 D <sub>gr</sub> = 1.10	H = 7.00 K = 6.80 D <sub>iso</sub> = 4.10	1694009-1	539616-1	539635-1	539666-2	539666-2
1-969044-5	B	1-969045-5	2.5 - 4.0	CuFe2	sel.Gold	A = 4.00 B = 5.90 C = 7.70 D = 1.45 E = 20.0	E = 4.60 G = 4.80 D <sub>gr</sub> = 2.40	H = 8.15 K = 8.00 D <sub>iso</sub> = 6.00	4.00mm² = 2.35	E = 3.60 G = 4.93 D <sub>gr</sub> = 2.30	H = 7.50 K = 6.80 D <sub>iso</sub> = 4.60	1694009-1	539616-1	539635-1	539666-2	539666-2
969044-5	B	969045-5	2.5 - 4.0	CuFe2	vorverzinkt	A = 3.50 B = 5.90 C = 7.70 D = 1.45 E = 20.0	E = 3.80 G = 4.00 D <sub>gr</sub> = 1.70	H = 8.15 K = 8.00 D <sub>iso</sub> = 5.70	2.50mm² = 2.04 2.00mm² = 1.90 1.50mm² = 1.76	E = 3.10 G = 4.20 D <sub>gr</sub> = 1.70	H = 7.50 K = 6.80 D <sub>iso</sub> = 4.60	1694009-1	539616-1	539635-1	539666-2	539666-2
969044-1	B	969045-1	2.2 - 3.7	CuFe2	vorverzinkt	A = 3.00 B = 5.40 C = 7.20 D = 1.35 E = 20.0	E = 2.80 G = 3.00 D <sub>gr</sub> = 1.10	H = 7.85 K = 7.70 D <sub>iso</sub> = 5.50	1.00mm² = 1.61 0.75mm² = 1.52 0.50mm² = 1.43	E = 2.20 G = 3.10 D <sub>gr</sub> = 1.10	H = 7.00 K = 6.80 D <sub>iso</sub> = 4.10	1694009-1	539616-1	539635-1	539666-2	539666-2
969040-1	B	969041-1	0.5 - 1.0	CuFe2	vorverzinkt	A = 4.00 B = 5.20 C = 6.80 D = 0.60 E = 19.50	E = 4.60 G = 4.80 D <sub>gr</sub> = 2.40	H = 6.40 K = 6.70 D <sub>iso</sub> = 4.00	3.00mm² = 2.13 3.50mm² = 2.24 4.00mm² = 2.35	E = 3.60 G = 4.95 D <sub>gr</sub> = 2.30	H = 5.50 K = 5.70 D <sub>iso</sub> = 3.10	1694009-0	539615-1	539635-1	539666-2	539666-2
964328-5	B	964327-5	2.5 - 4.0	CuFe2	vorverzinkt	A = 4.00 B = 5.20 C = 6.80 D = 0.60 E = 19.50	E = 4.60 G = 4.80 D <sub>gr</sub> = 2.40	H = 6.40 K = 6.70 D <sub>iso</sub> = 4.00	3.00mm² = 2.13 3.50mm² = 2.24 4.00mm² = 2.35	E = 3.60 G = 4.95 D <sub>gr</sub> = 2.30	H = 5.50 K = 5.70 D <sub>iso</sub> = 3.10	1694009-0	539615-1	539635-1	539666-2	539666-2
964326-5	C	964325-5	2.2 - 3.0	CuFe2	vorverzinkt	A = 3.50 B = 4.70 C = 6.30 D = 0.40 E = 19.50	E = 3.80 G = 4.00 D <sub>gr</sub> = 1.70	H = 4.90 K = 4.90 D <sub>iso</sub> = 2.60	1.50mm² = 1.76 2.00mm² = 1.90 2.50mm² = 2.04	E = 3.10 G = 4.20 D <sub>gr</sub> = 1.70	H = 3.80 K = 4.40 D <sub>iso</sub> = 2.30	1694009-0	539615-1	539635-1	539666-2	539666-2
964326-1	C	964325-1	1.4 - 2.1	CuFe2	vorverzinkt	A = 3.00 B = 4.20 C = 5.80 D = 0.40 E = 19.50	E = 2.80 G = 3.00 D <sub>gr</sub> = 1.10	H = 3.80 K = 4.10 D <sub>iso</sub> = 1.80	0.50mm² = 1.43 0.75mm² = 1.52 1.00mm² = 1.61	E = 2.20 G = 3.10 D <sub>gr</sub> = 1.10	H = 3.10 K = 3.70 D <sub>iso</sub> = 1.80	1694009-0	539615-1	539635-1	539666-2	539666-2
964324-1	B	964323-1	0.2 - 0.5	CuFe2	vorverzinkt	A = 2.50 B = 3.80 C = 6.60 D = 0.30 E = 19.50	E = 2.20 G = 2.20 D <sub>gr</sub> = 0.80	H = 3.10 K = 3.10 D <sub>iso</sub> = 1.40	0.20mm² = 1.13 0.25mm² = 1.15 0.35mm² = 1.19 0.50mm² = 1.26	E = 2.00 G = 2.30 D <sub>gr</sub> = 0.80	H = 2.50 K = 2.70 D <sub>iso</sub> = 1.40	1694009-0	539615-1	539635-1	539666-2	539666-2

SEE APPLICATION SPECIFICATION  
siehe Verarbeitungspezifikation  
114-18037

NOTES  
Bemerkungen

- ACCORDING INSULATION Ø IS TO CHOOSE THE SINGLE WIRE SEAL ATTENTION: DIFFERENT HOUSING CAVITY DIAMETER ARE POSSIBLE. PLEASE NOTICE APPROPRIATE HOUSING PRODUCT SPECIFICATION! Entsprechend dem Isolationsdurchmesser ist die Einzel-Dichtung auszuwählen Achtung: Verschiedene Gehäuse-Kammer-Durchmesser moeglich, bitte entsprechende Gehäuse-Produkt-Spezifikation beachten!
- ADDITIONAL CUSTOMER-SPECIFIC SEAL EXISTING weitere kundenspezifische Einzeldichtung vorhanden
- BODY ELECTRO TIN PLATED OVER NICKEL 0.2µm min. Kontaktkoerper: gal. verzinkt ueber Nickel 0.2µm min. CONTACT AREA SELECTIVE GOLD OVER NICKEL 0.8µm min. Kontaktzone: selektiv vergoldet ueber Ni 0.8µm min.
- WIRE CRIMP AREA ELECTRO TIN PLATED OVER NICKEL 1.0µm min. Drahtcrimpbereich galv. verzinkt ueber Nickel 1.0µm min.
- CONTACT ZONE SELECTIVE PRE SILVER PLATED MIN. 1-1.5 µm Kontaktzone selektiv vorversilbert min. 1-1.5 µm
- CONTACT BODY: ELECTRO TIN PLATED OVER NICKEL 0.2µm min. Kontaktkoerper: gal. verzinkt ueber Nickel 0.2µm min. TOUCHING AREA TO CANTILEVER SPRING: SELECTIVE AU PLATED OVER NICKEL 0.8µm min. Anlageflaeche zur Ueberfeder Kontaktzone selektiv Au ueber Ni beschichtet 0.8µm min. CANTILEVER SPRING: COMPLETELY AU PLATED 0.6µm min. Ueberfeder: komplett Au beschichtet 0.6µm min.
- CONTACT ZONE SELECTIVE PRE SILVER PLATED MIN. 3-4.5 µm Kontaktzone selektiv vorversilbert min. 3-4.5 µm
- 1-3µm Sn28M LAYER FOR HIGHER TEMPERATURE REQUIREMENTS 1-3µm Sn28M Schicht fuer Hoehere Temperaturanforderungen
- TRANSITION ONLY FOR PN 964325 AND 964326 Uebergang nur fuer PN 964325 und 964326
- DOTTED LINE IS ALTERNATIVE SHAPE Gestrichelte Linie alternative Form

SINGLE WIRE SEAL Einzel-Dichtung		
963245-1	3.4 - 3.7	YELLOW gelb
963244-1	2.2 - 3.0	WHITE weiss
963243-1	1.2 - 2.1	BLUE blau
100132-1	DEAD END PLUG	BLACK schwarz
967011-1	3.6 - 4.3	GREEN gruen
968043-1	4.3 - 5.1	RED rot
ORDER-NO. Bestell-Nr	INSULATION Ø Isolations Ø	COLOUR Farbe

THIS DRAWING IS A CONTROLLED DOCUMENT. DIMENSIONS: SEE TABLE. MATERIAL: SEE TABLE. WEIGHT: -. CUSTOMER: Drawing. SCALE: 10:1. SHEET: 1 OF 1.

STANDARD POWER TIMER CONTACT TYP A

00779 ©=1355049